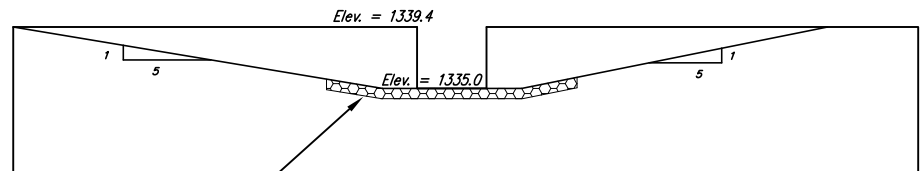
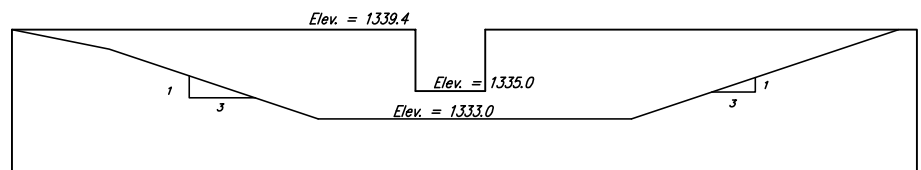


Equestrian Estates Addition

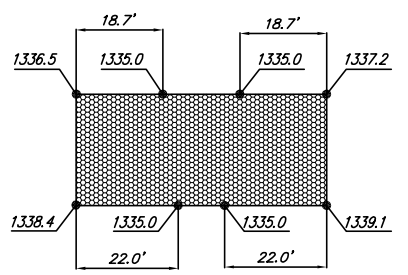


WEIR GRADING - DOWNSTREAM

PLACE 144 SQ YDS
MACCAFFERI RENO MATTRESS
L = 9' W = 6' H = 0.75'

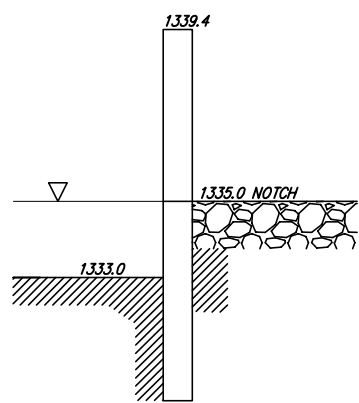


WEIR GRADING - UPSTREAM



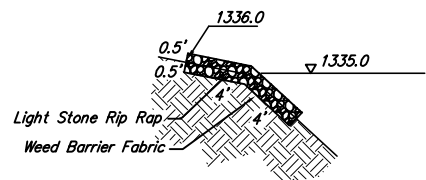
RENO MATTRESS DETAIL

7043	7115.75	16593.51	1337.00	"POND"
7044	7087.91	16593.98	1340.00	"POND"
7045	7089.88	16516.49	1340.00	"POND"
7046	7103.26	16514.65	1340.00	"POND"
7047	7123.63	16519.40	1340.00	"POND"
7048	7141.47	16530.39	1340.00	"POND"
7049	7166.47	16551.50	1340.00	"POND"
7050	7200.04	16570.16	1340.00	"POND"
7051	7233.48	16580.69	1340.00	"POND"
7052	7270.85	16592.04	1340.00	"POND"
7053	7317.65	16611.78	1340.00	"POND"
7054	7363.38	16637.57	1340.00	"POND"
7055	7390.55	16656.49	1340.00	"POND"
7056	7372.95	16728.89	1340.00	"POND"
7057	7326.25	16718.07	1340.00	"POND"
7058	7293.97	16695.46	1340.00	"POND"
7059	7267.30	16674.51	1340.00	"POND"
7060	7223.07	16649.62	1340.00	"POND"
7061	7176.32	16611.66	1340.33	"POND"
7062	7392.12	16722.97	1340.39	"POND"
7063	7407.93	16734.29	1340.44	"POND"
7064	7423.73	16745.60	1340.49	"POND"
7065	7439.54	16756.92	1340.54	"POND"
7066	7455.35	16768.23	1340.60	"POND"
7067	7471.15	16779.55	1340.65	"POND"
7068	7486.96	16790.86	1340.70	"POND"
7069	7502.77	16802.18	1340.75	"POND"
7070	7518.57	16813.49	1340.81	"POND"
7071	7534.38	16824.81	1340.86	"POND"
7072	7550.18	16836.12	1340.91	"POND"
7073	7565.99	16847.44	1340.96	"POND"
7074	7581.80	16858.75	1341.02	"POND"
7075	7597.60	16870.07	1341.07	"POND"
7076	7613.41	16881.38	1341.12	"POND"
7077	7629.22	16892.70	1341.18	"POND"
7078	7645.02	16904.01	1341.23	"POND"
7079	7660.83	16915.33	1341.28	"POND"
7080	7676.63	16926.64	1341.33	"POND"
7081	7692.44	16937.96	1341.39	"POND"
7082	7708.25	16949.27	1341.44	"POND"
7083	7724.05	16960.59	1341.49	"POND"
7084	7739.86	16971.90	1341.54	"POND"
7085	7755.67	16983.22	1341.60	"POND"
7086	7771.47	16994.53	1341.65	"POND"
7087	7787.28	17005.85	1341.70	"POND"
7088	7803.08	17017.16	1341.75	"POND"
7089	7818.89	17028.48	1341.81	"POND"
7090	7834.70	17039.79	1341.86	"POND"
7091	7850.50	17051.11	1341.91	"POND"
7092	7866.31	17062.42	1341.96	"POND"
7093	7882.12	17073.74	1342.02	"POND"
7094	7897.92	17085.05	1342.07	"POND"
7095	7913.73	17096.37	1342.12	"POND"
7096	7929.53	17107.68	1342.18	"POND"
7097	7945.34	17119.00	1342.23	"POND"
7098	7961.15	17130.31	1342.28	"POND"
7099	7976.95	17141.63	1342.33	"POND"
7100	7992.76	17152.94	1342.39	"POND"
7101	8008.57	17164.25	1342.44	"POND"
7102	8024.37	17175.57	1342.49	"POND"
7103	8040.18	17186.88	1342.54	"POND"

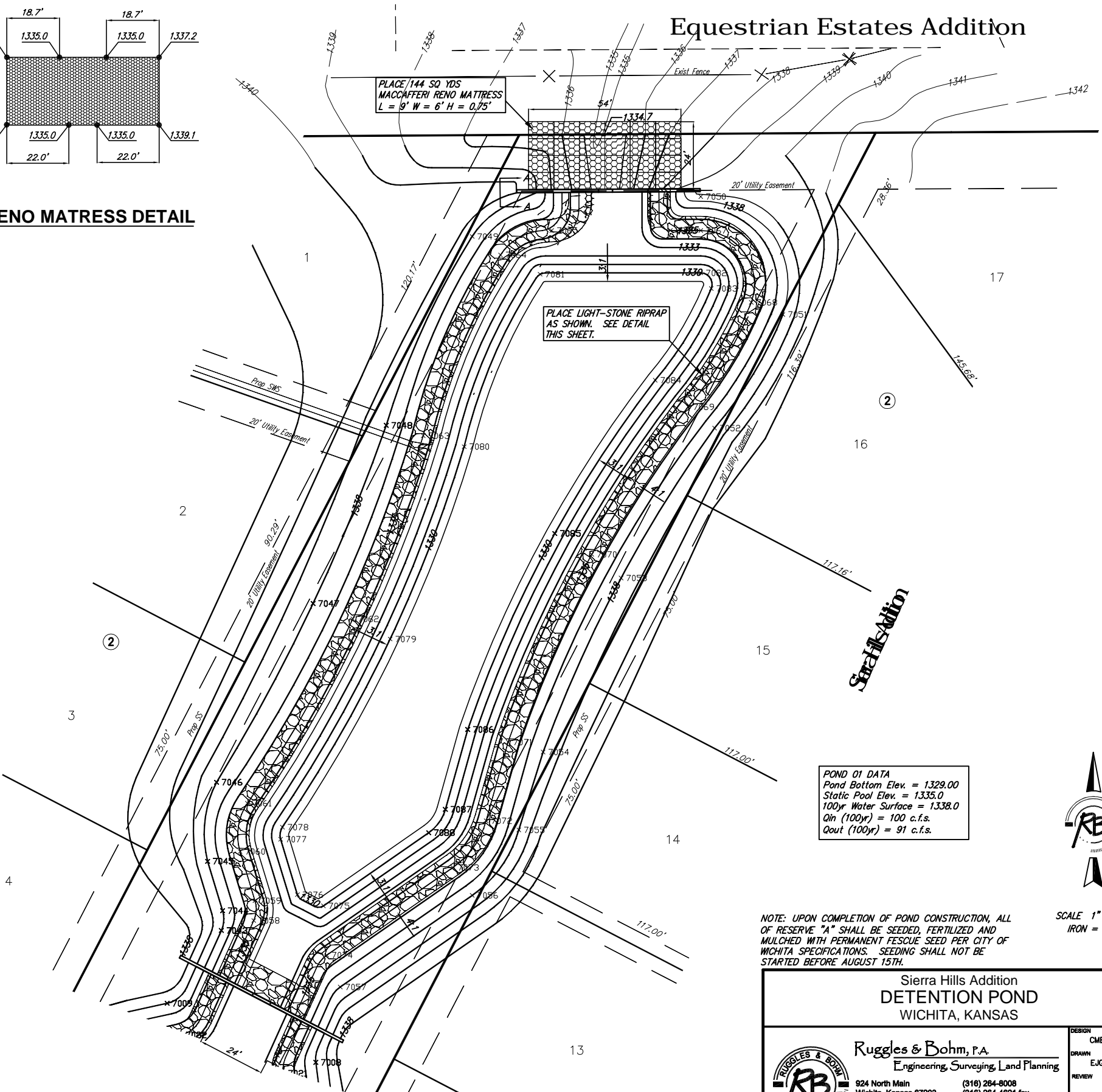


SECTION A-A

Pond Coordinates



LIGHT STONE RIP RAP DETAIL



PLACE LIGHT-STONE RIPRAP
AS SHOWN. SEE DETAIL
THIS SHEET.

PLACE 144 SQ YDS
MACCAFFERI RENO MATTRESS
L = 9' W = 6' H = 0.75'

POND 01 DATA
Pond Bottom Elev. = 1329.00
Static Pool Elev. = 1335.0
100yr Water Surface = 1338.0
Q_{in} (100yr) = 100 c.f.s.
Q_{out} (100yr) = 91 c.f.s.

NOTE: UPON COMPLETION OF POND CONSTRUCTION, ALL OF RESERVE "A" SHALL BE SEED, FERTILIZED AND MULCHED WITH PERMANENT FESCUE SEED PER CITY OF WICHITA SPECIFICATIONS. SEEDING SHALL NOT BE STARTED BEFORE AUGUST 15TH.



SCALE 1" = 20'
IRON = •

Sierra Hills Addition DETENTION POND WICHITA, KANSAS		DESIGN CMB	DATE APR 22, 2021
Ruggles & Bohm, P.A. Engineering, Surveying, Land Planning		DRAWN E.J.G.	SHEET 37
924 North Main Wichita, Kansas 67203 www.rbkansas.com		REVIEW UTILITY	OF 69
(316) 284-8008 (316) 284-4621 fax E-mail: info@rbkansas.com		PROJECT NUMBER 472-83703	
DRAWING FILE pond {Pond Plan}			