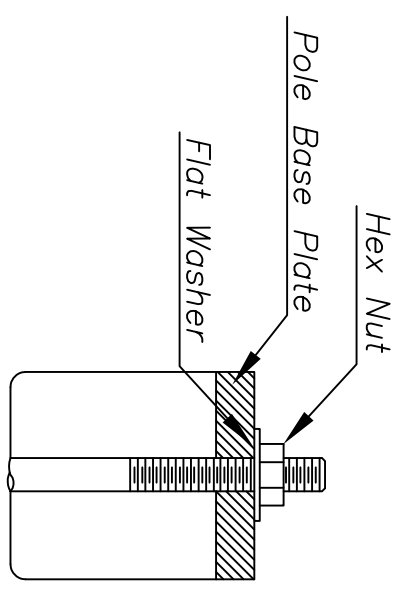
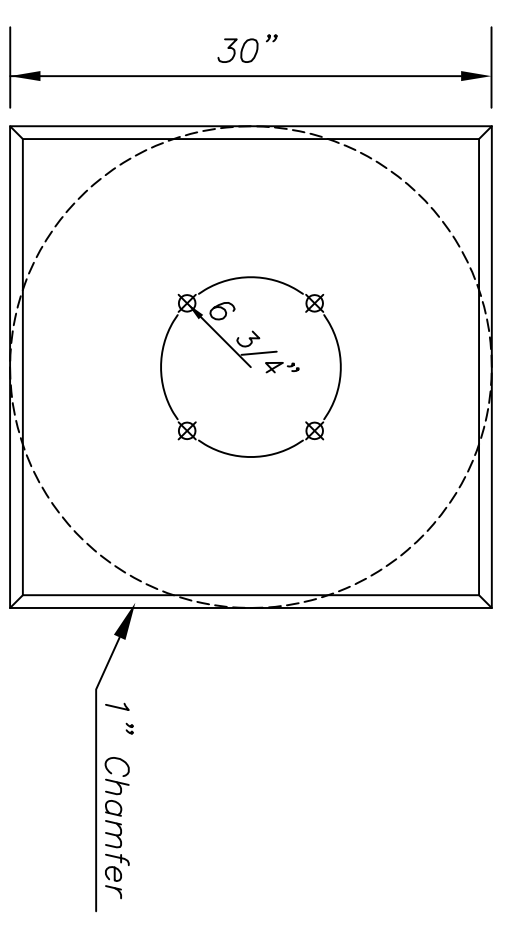


Use Keystone "No-Weld  
Number 1 Anti-Seize  
Compound" on all  
bolts & nuts.

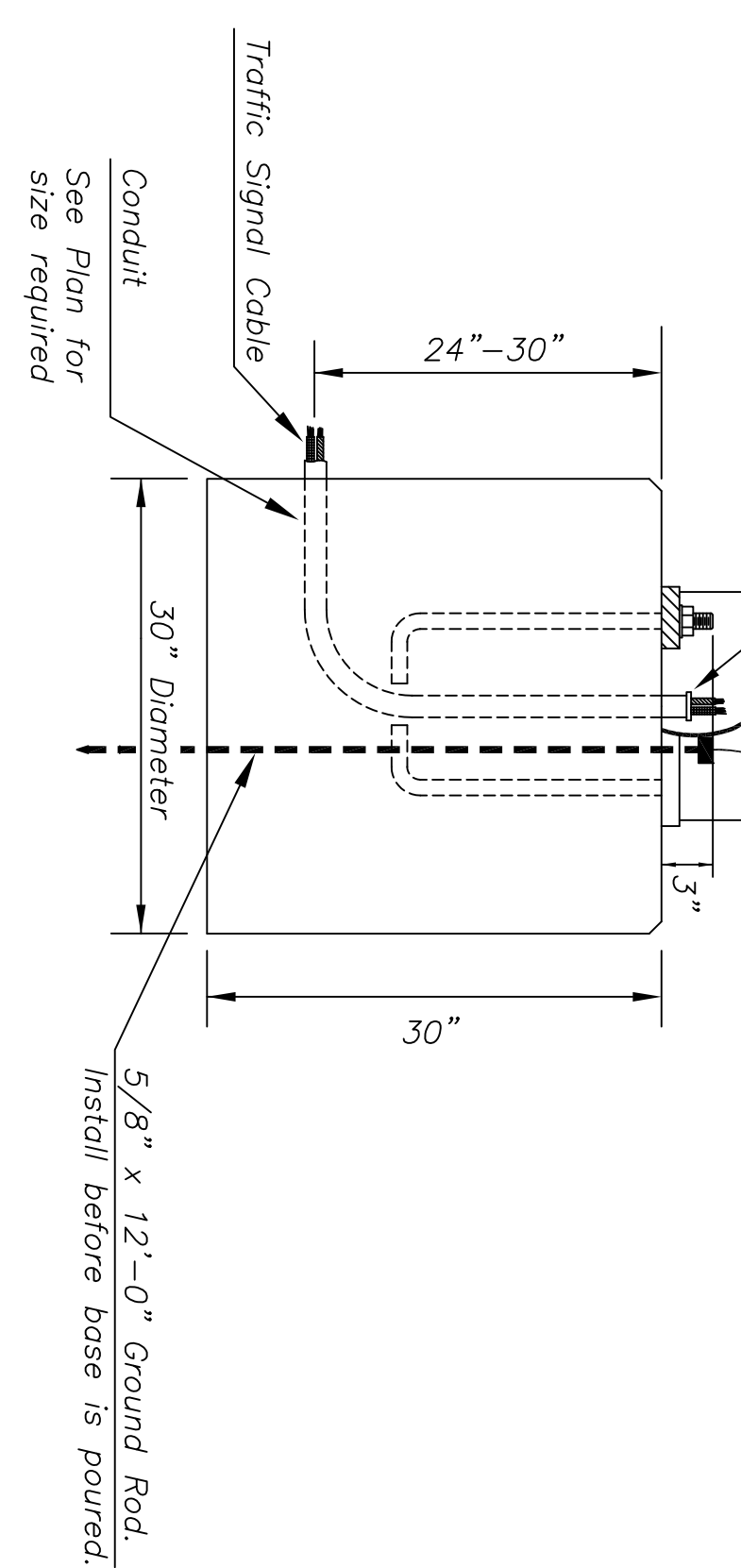


**ANCHOR BOLT  
DETAIL**



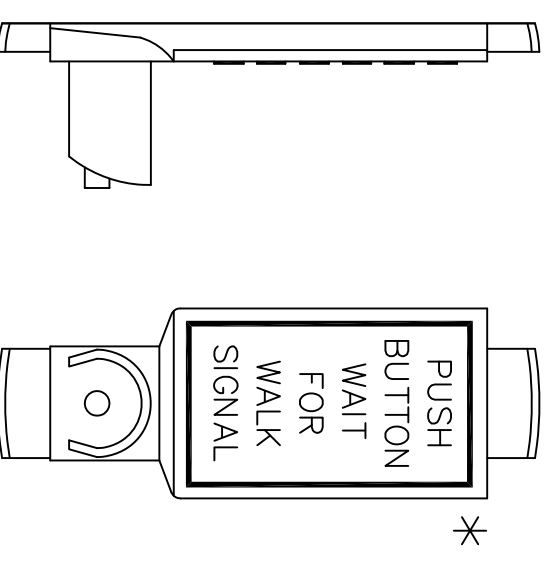
Conduit extensions above  
base shall have a plastic  
or metal rim bushing to  
prevent the chafing of  
cables.

\* No. 6 bare copper ground  
conductor from internal  
grounding lug to clamp  
on ground rod.



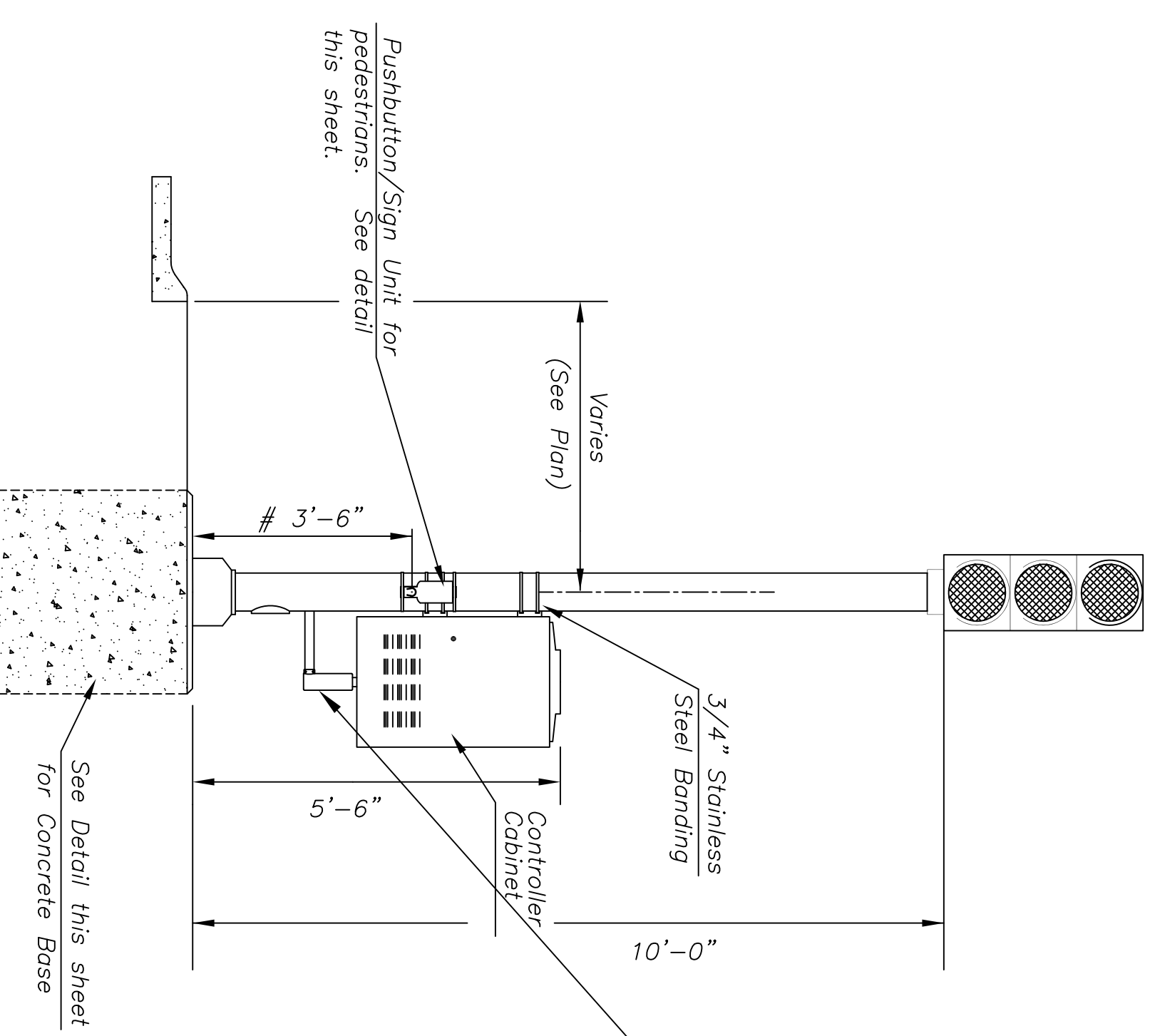
**CONCRETE BASE DETAIL**

INSTALL PEDESTRIAN PUSHBUTTON UNDERNEATH  
CORRESPONDING PEDESTRIAN SIGNAL HEAD ON  
SIDE OF POLE NEAREST CROSSWALK.  
UNIT SHALL BE FIRMLY ATTACHED TO THE  
SIDE OF POLE WITH 3/4" STEEL BANDS.  
SHARP ENDS SHALL BE FOLDED UNDER TO  
PREVENT INJURY TO PEDESTRIANS.



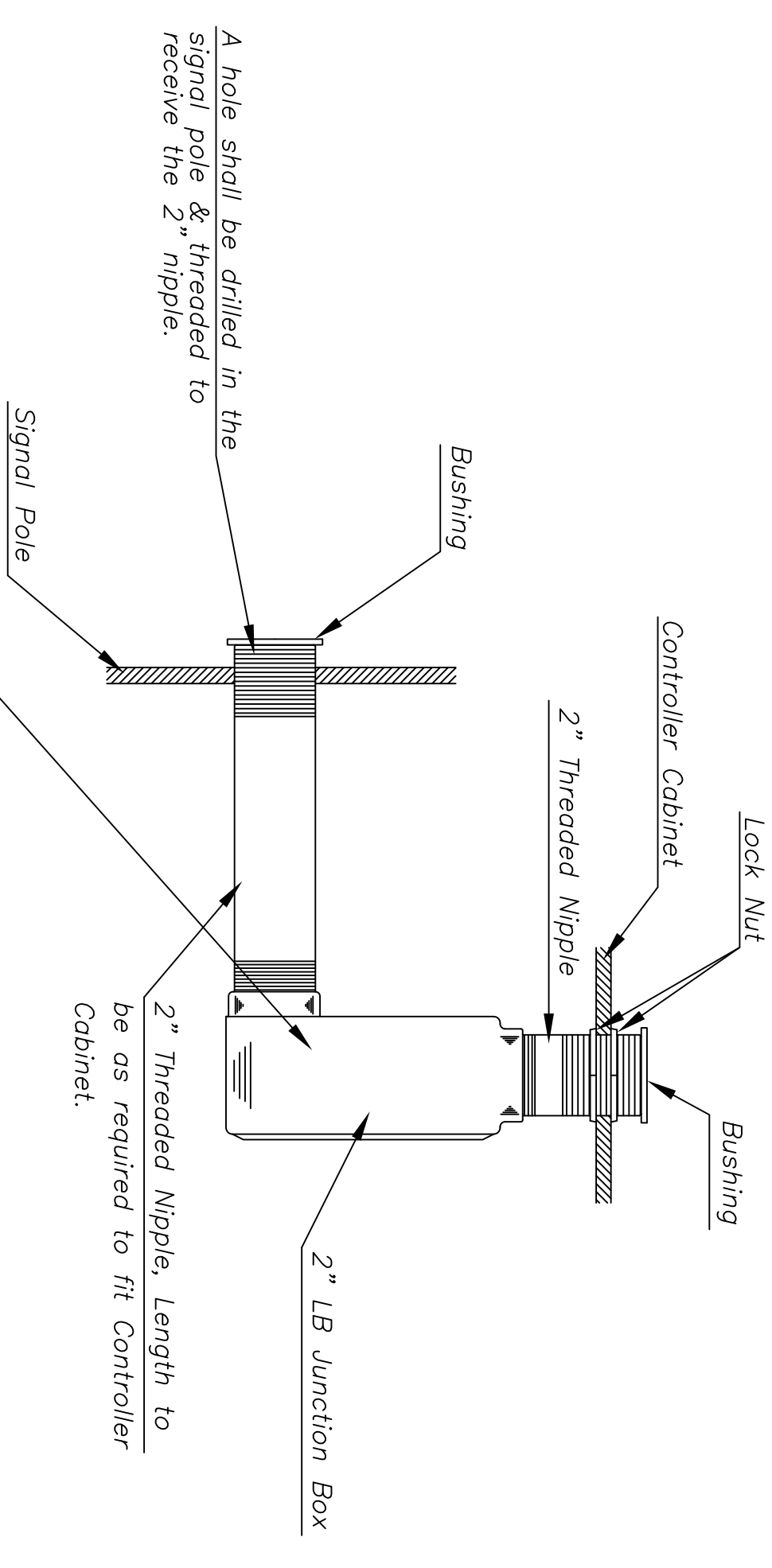
\* NOTE: MESSAGE TO BE CAST WITH HOUSING  
(ONE PIECE)

**PEDESTRIAN PUSHBUTTON/SIGN  
UNIT DETAIL**



# From Sidewalk Finish Grade  
to Center of Pushbutton.

**TRAFFIC SIGNAL PEDESTAL  
DETAIL SHEET**



A hole shall be drilled in the  
signal pole & threaded to  
receive the 2" nipple.

2" Threaded Nipple, length to  
be as required to fit Controller  
Cabinet.

PROJECT DESCRIPTION		TRAFFIC SIGNAL PEDESTAL & CONCRETE BASE DETAIL SHEET	
PROJECT NUMBER	472-94601	SCALE	NO SCALE
DRAWN BY	T.M.	DATE	MAY 97
REVISION BY		DATE/REV	
DIVISION OF TRAFFIC ENGINEERING		DEPARTMENT OF PUBLIC WORKS	
WM. G. MCKINLEY P.E. TRAFFIC ENGINEER		SHEET 28 OF 49	