

# TYPICAL PAVEMENT DETAILS

## General Notes

Base reinforcement shall be one of the three following options:

1. Tensor BX1200, Mirafi Backgrid 12, Mirafi Geolon HP970, or approved equal;
2. Tensor BX1100 on top of Mirafi Geolon HP370;
3. Mirafi Backgrid 11, on top of Mirafi Geolon HP370

Base reinforcement shall be subsidiary to the crushed rock base.

Concrete Pavement shall be in accordance to the following requirements:

- 8" Concrete thickness
- Rock base thickness
- 7" (Intersection)
- 6"

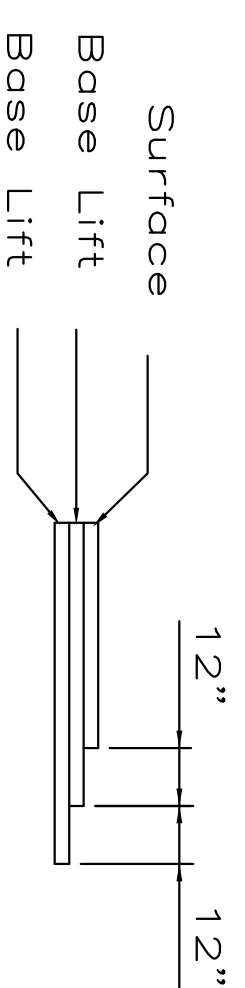
Base reinforcement shall be installed in accordance with the manufacturer's recommendations. The crushed rock base shall conform to the following gradations:

Stone Size	% Retained
2-1/2"	0
3/4"	20 - 60
#40	50 - 80
#10	80 - 94
#200	90 - 98

The aggregate quality shall conform to the requirements of KDOT Std. Spec. 102, Overallly Class 1.

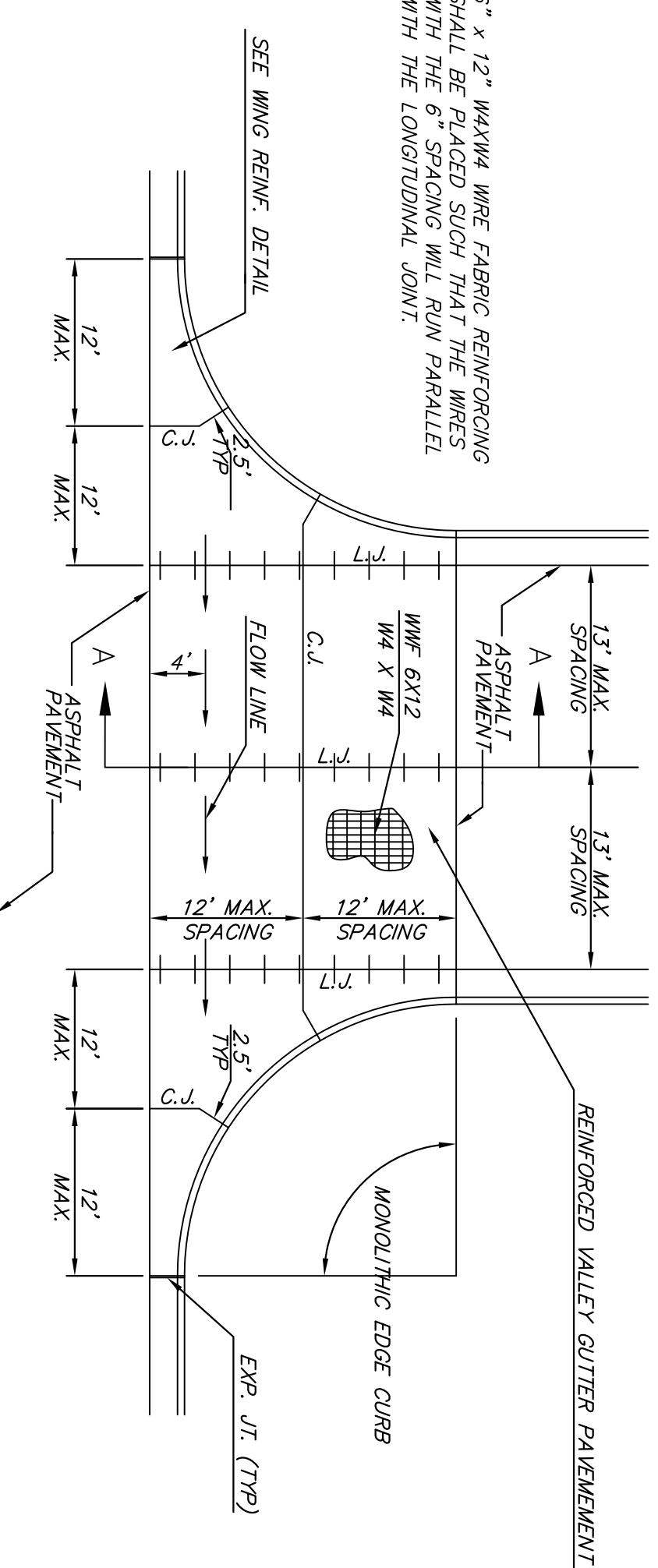
The Rock Base shall be compacted and smoothed with a steel faced roller prior to placement of the pavement.

The concrete pavement between the combined curb and gutter shall be paid as square joints of 9" reinforced concrete.

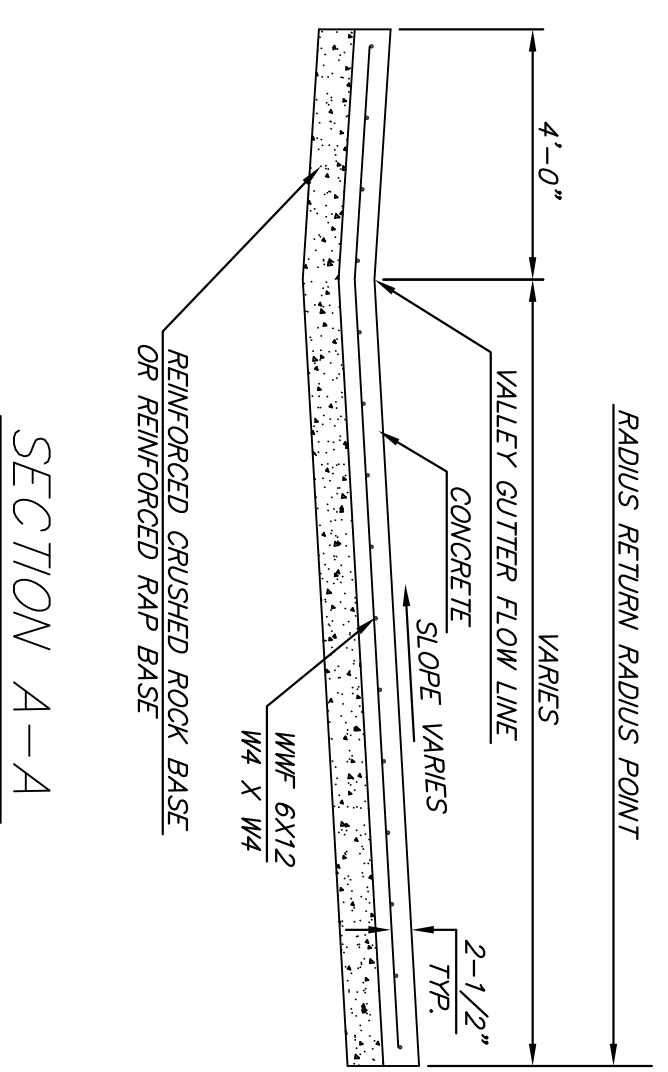


## TRANSVERSE CONSTRUCTION

Transverse construction joints shall be constructed in flexible base pavements at locations where pavement joints existing flexible base pavement as shown by the detail. All costs associated with the construction of the Transverse joint shall be included in the Bid Price for Square Yards of ASPHALTIC CONCRETE (6" BITUMINOUS BASE).

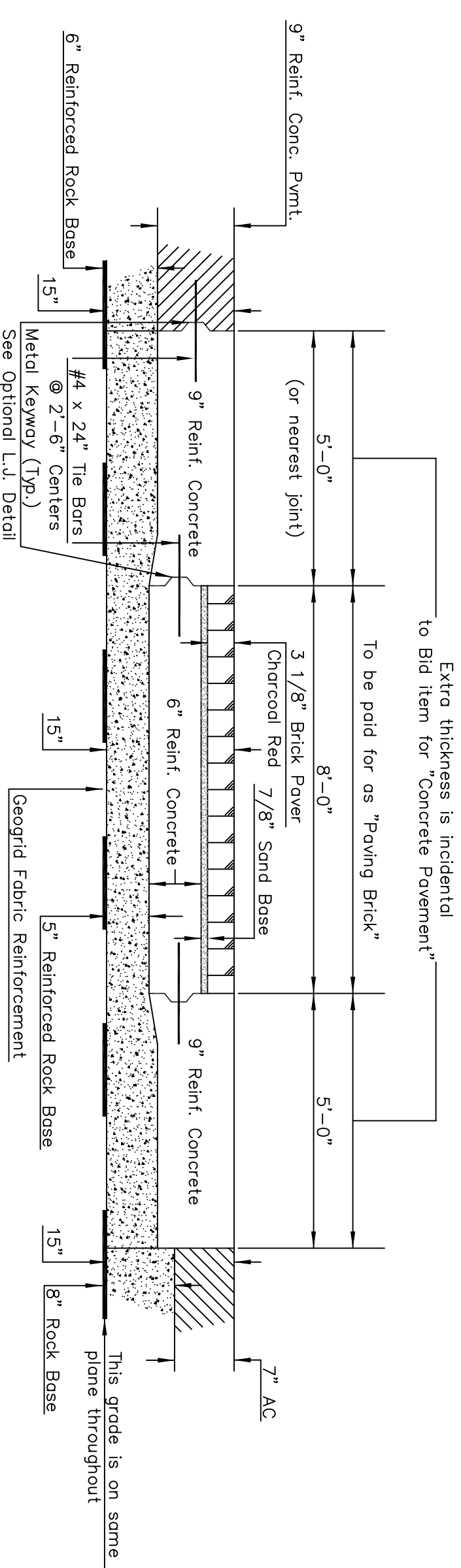


## PLAN



## SECTION A-A

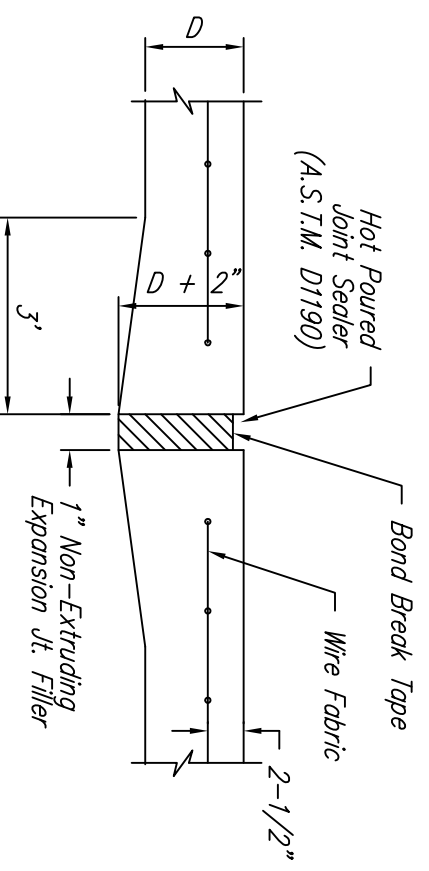
## REINFORCED VALLEY GUTTER DETAIL



## CROSSWALK BRICK PAVER SURFACE DETAIL

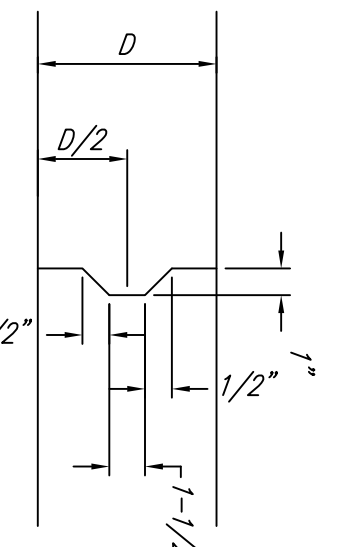
NOTE: Construction of the interlocking precast concrete paving stones shall conform to reference 2007 KDOT Spec. book.

Rev. 12-19-00, MCG

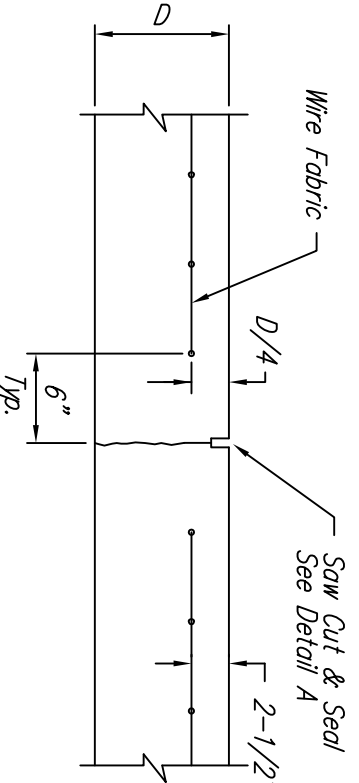


## EXPANSION JOINT

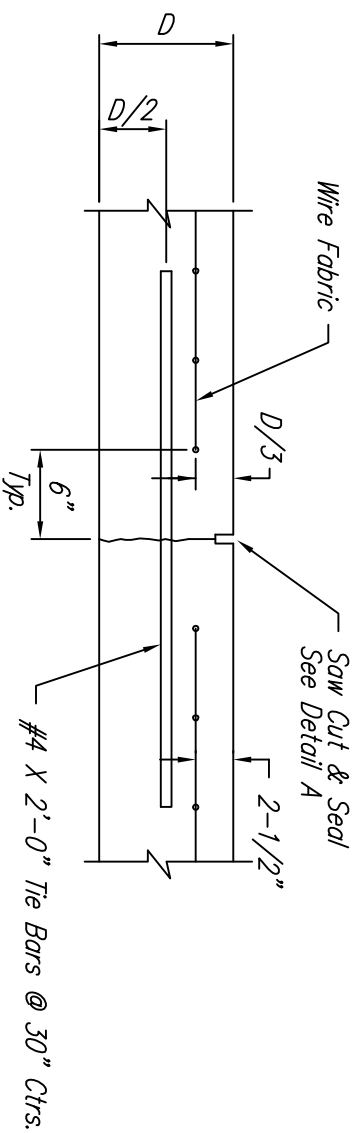
NOTE: Extra Thickness to be Subsidiary to Price of Square Yards Pavement



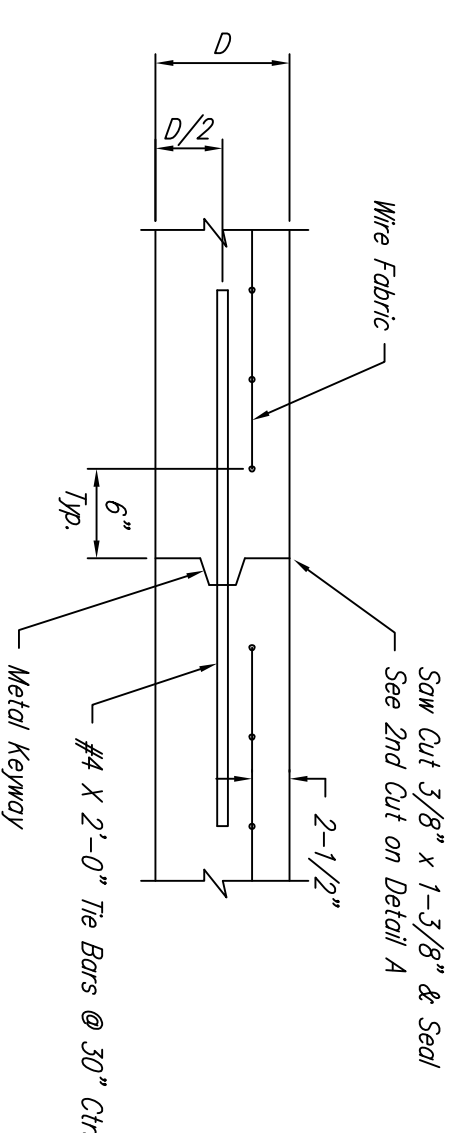
## KEYWAY DETAIL



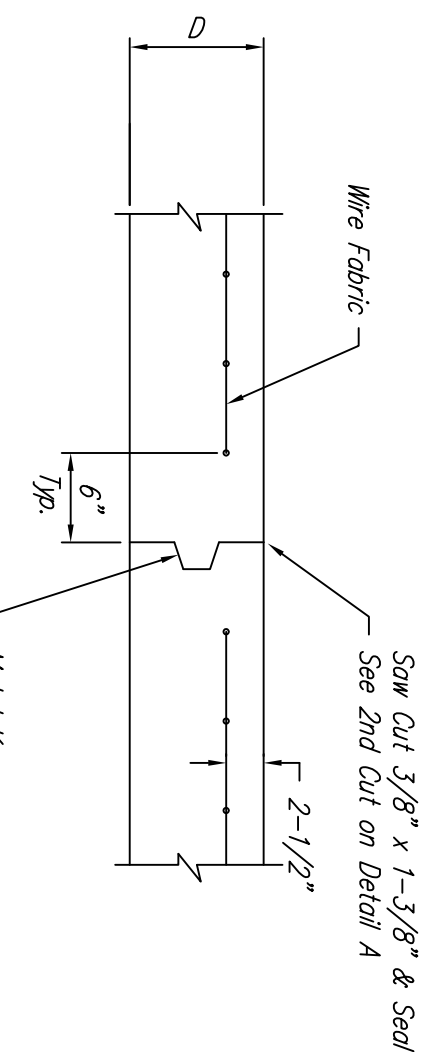
## CONTRACTION JOINT DETAIL (C.J.)



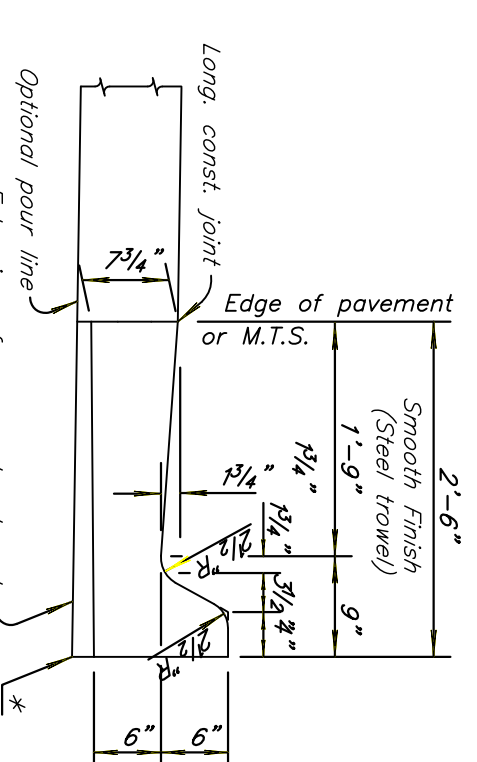
## LONGITUDINAL JOINT DETAIL (L.J.)



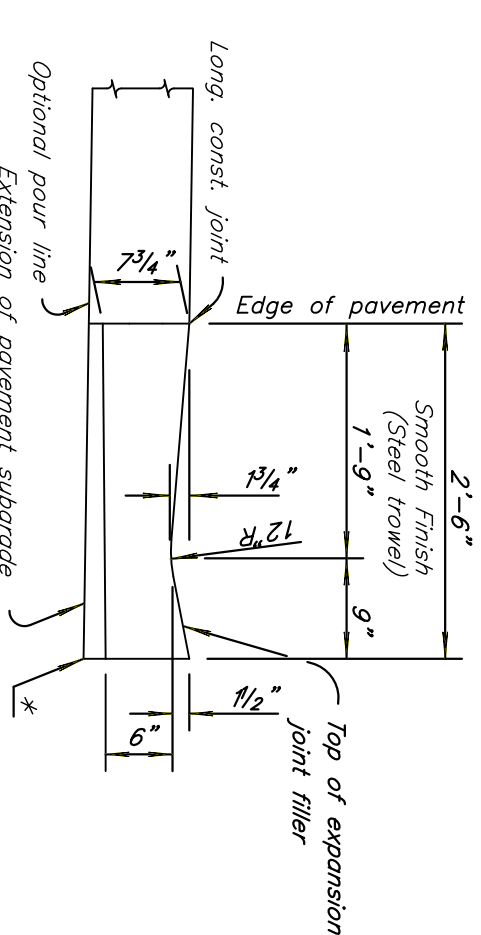
## OPTIONAL LONGITUDINAL JOINT DETAIL (L.J.)



## OPTIONAL CONTRACTION JOINT

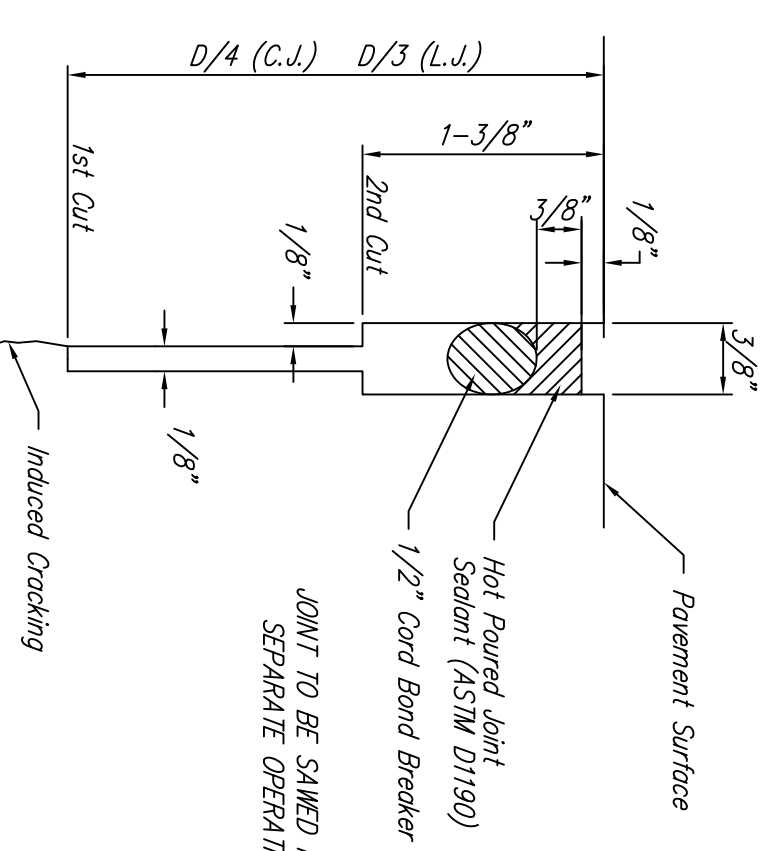


## COMBINED CURB & GUTTER - TYPE (2'-6" WIDTH)

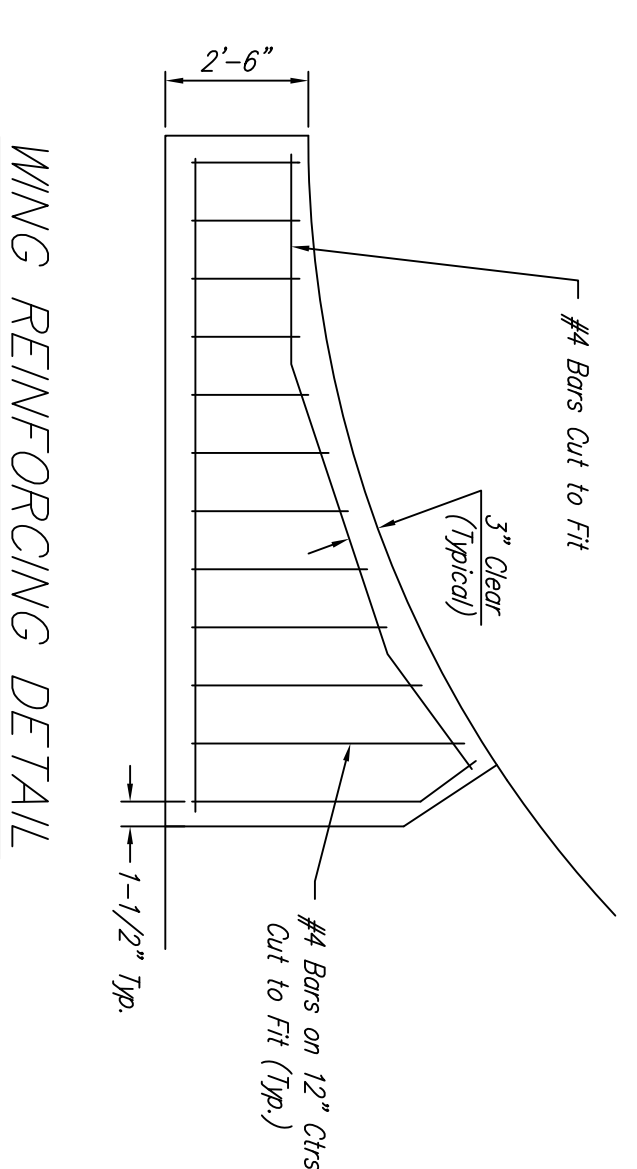


## COMBINED CURB & GUTTER - TYPE (1/2'-6" WIDTH)

\* Contractors has the option of thickening the curb and gutter as shown.



## SAW JOINT DETAIL



## WING REINFORCING DETAIL

**Kemiller Engineering**

318 S. Market  
Wichita, KS 67202

316/264-0242

PROJECT NUMBER  
**472-83755**

Intersection of Douglas and Oliver  
**PAVING DETAILS**  
Wichita, Sedgewick County

KEY NO.	FILE	DATE	SHEET
030033	SH2 PAV details	5/2007	2A
DESIGN	DRAWN	REVISED	OF
CCW	KM	3/20/2008	49