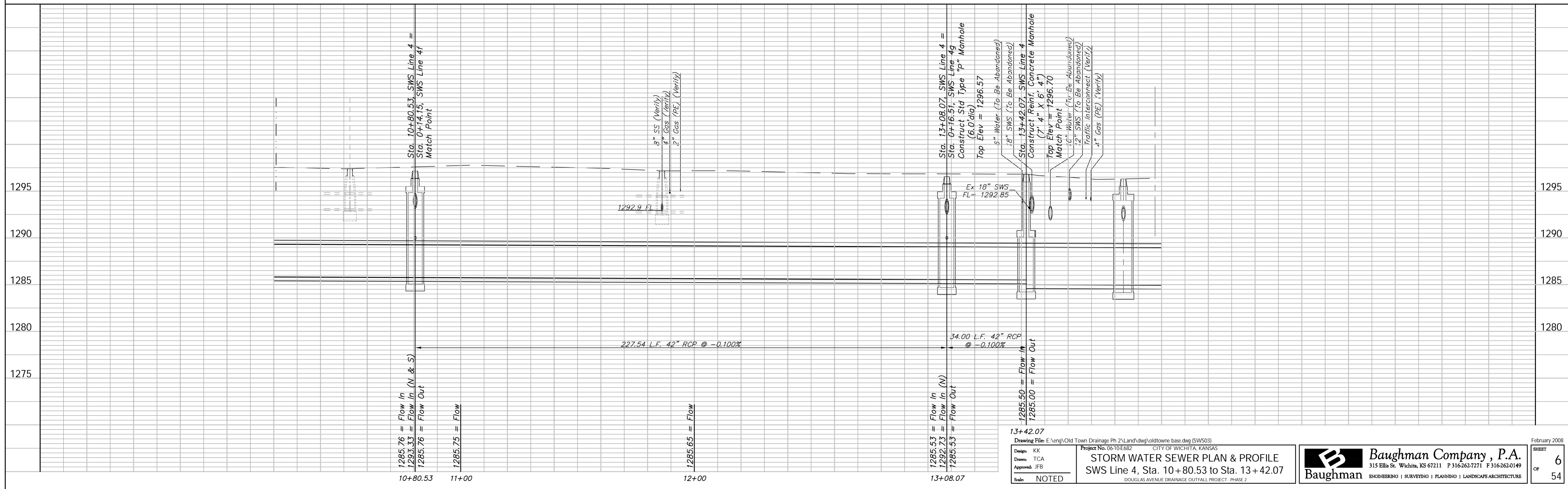
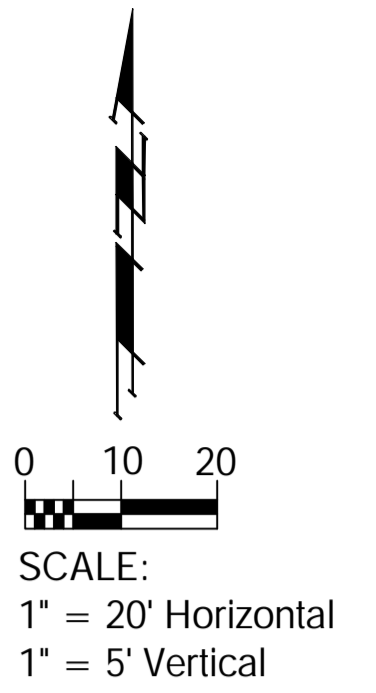
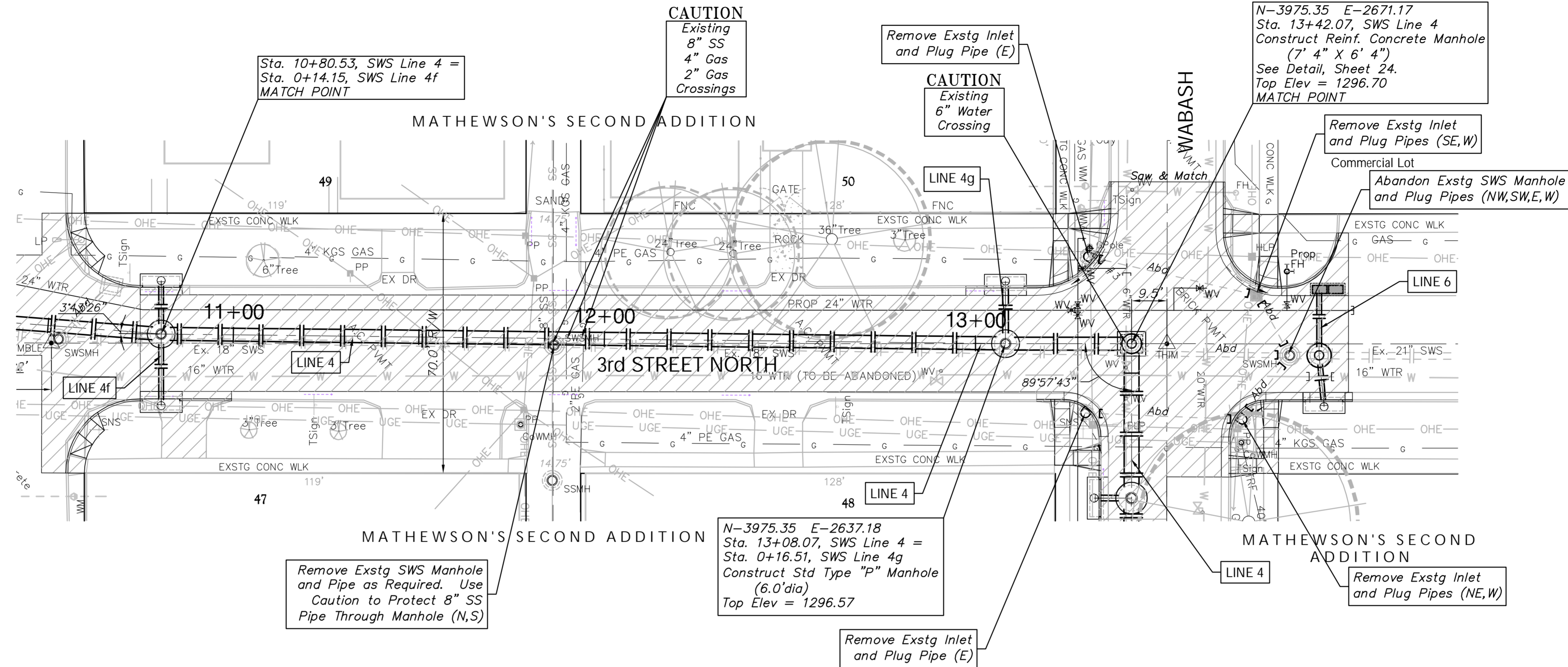


Benchmarks  
 BM #3 - Small RR spike Located in South Face of Guy-Pole  
 at the NW Corner of the Intersection of Wabash  
 and 3rd Street North.  
 Elev. = 1297.94 (MSL)



Drawing File: E:\eng\Old Town Drainage Ph 2\Land\dwg\oldtowne base.dwg (SW503)  
 Project No. 0610E682 CITY OF WICHITA, KANSAS  
**STORM WATER SEWER PLAN & PROFILE**  
 SWS Line 4, Sta. 10+80.53 to Sta. 13+42.07  
 DOUGLAS AVENUE DRAINAGE OUTFALL PROJECT - PHASE 2

Design: KK  
 Drawn: TCA  
 Approved: JFB  
 Scale: NOTED

February 2008  
 SHEET 6 OF 54

**Baughman Company, P.A.**  
 315 Ellis St., Wichita, KS 67211 P 316-262-7171 F 316-262-0149  
 ENGINEERING | SURVEYING | PLANNING | LANDSCAPE ARCHITECTURE