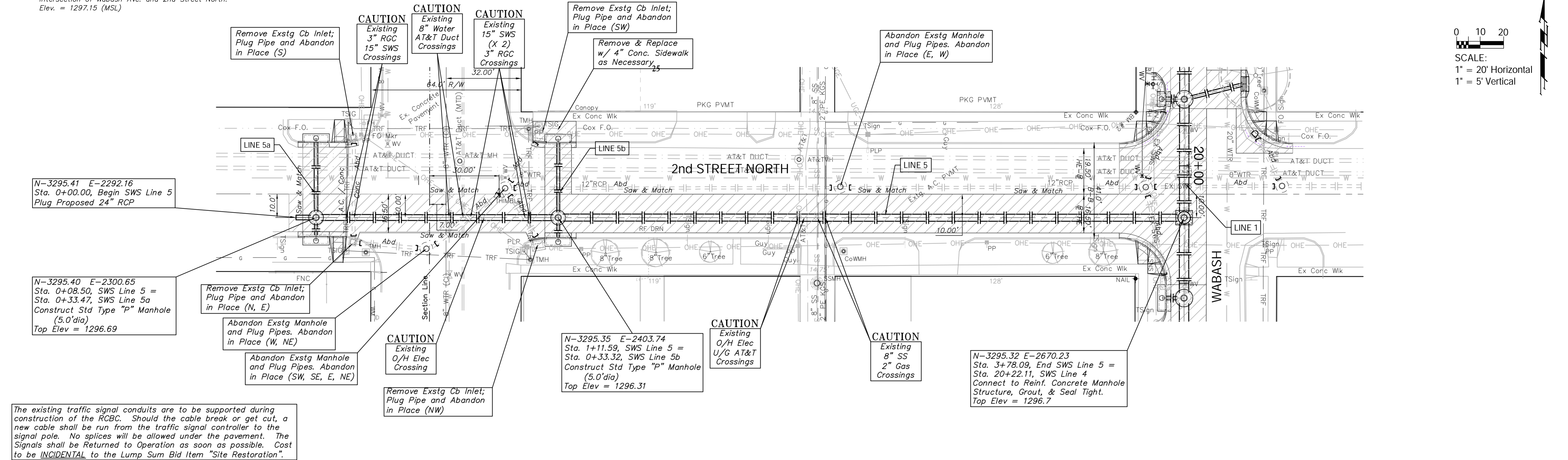
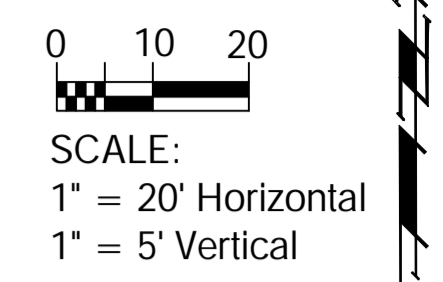
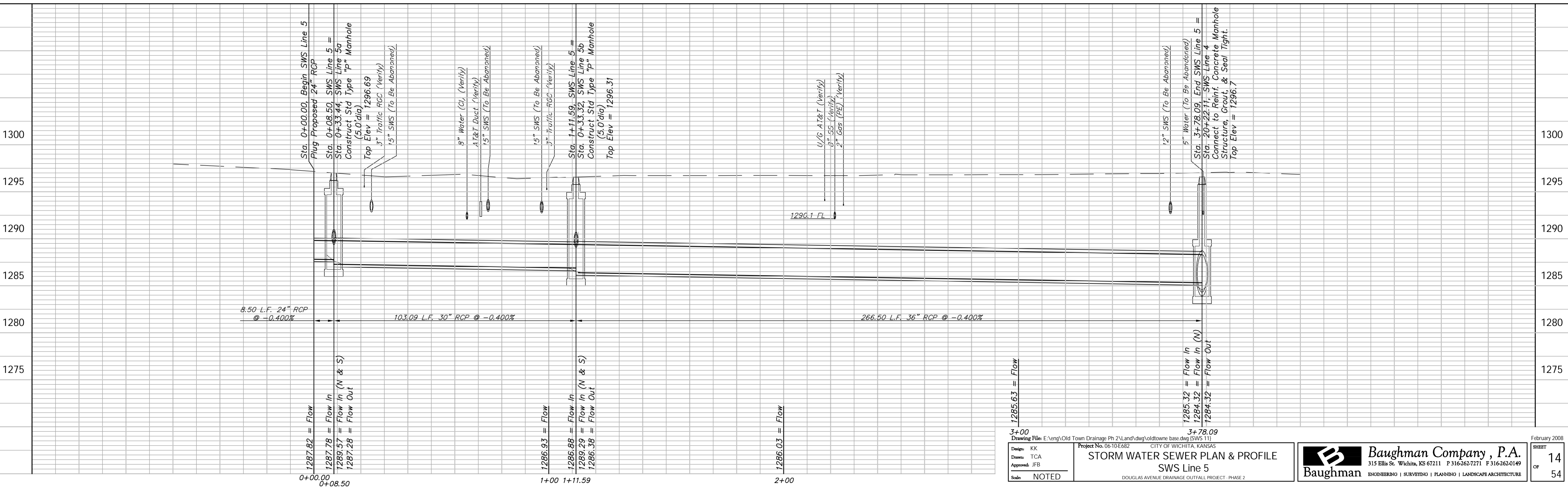


Benchmarks

BM #2- Chiseled "+" Located in sidewalk @ the NWPC of the Intersection of Wabash Ave. and 2nd Street North. Elev. = 1297.15 (MSL)



The existing traffic signal conduits are to be supported during construction of the RCBC. Should the cable break or get cut, a new cable shall be run from the traffic signal controller to the signal pole. No splices will be allowed under the pavement. The Signals shall be Returned to Operation as soon as possible. Cost to be INCIDENTAL to the Lump Sum Bid Item "Site Restoration".



<p>3+00 Drawing File: E:\eng\Old Town Drainage Ph 2\Land\dwg\oldtowne base.dwg (SWS 11)</p> <p>Design: KK Drawn: TCA Approved: JFB Scale: NOTED</p>	<p>3+78.09 Project No. 0610E682 CITY OF WICHITA, KANSAS STORM WATER SEWER PLAN & PROFILE SWS Line 5 DOUGLAS AVENUE DRAINAGE OUTFALL PROJECT - PHASE 2</p>	<p>February 2008 SHEET OF 14 OF 54</p>
---	--	--

