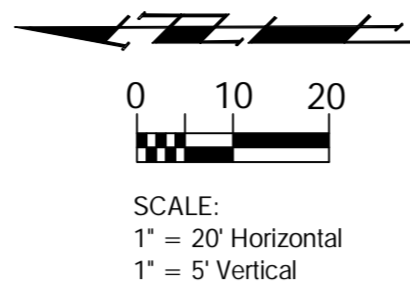


Benchmarks

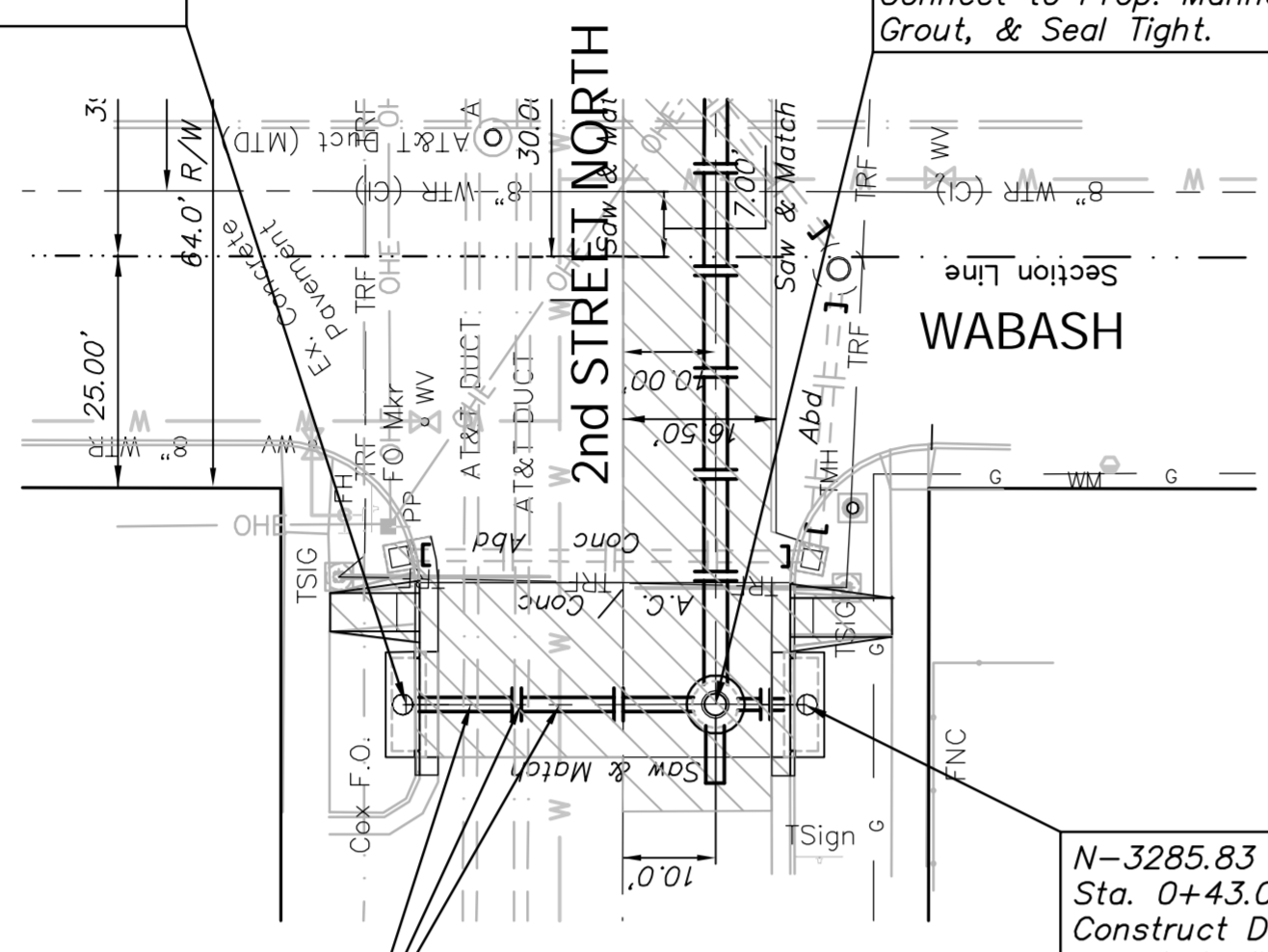
BM #2- Chiseled "+" Located in sidewalk @ the NWPC of the Intersection of Wabash Ave. and 2nd Street North. Elev. = 1297.15 (MSL)



N-3328.85 E-2300.65
Sta. 0+00.00, Begin SWS Line 5a
Construct Double Type 1 Inlet
(11' 4" X 4' 4")
Top Elev = 1296.82

N-3295.40 E-2300.65
Sta. 0+33.47, SWS Line 5a =
Sta. 0+08.50, SWS Line 5
Connect to Prop. Manhole,
Grout, & Seal Tight.

N-3285.83 E-2300.65
Sta. 0+43.01, End SWS Line 5a
Construct Double Type 1 Inlet
(11' 4" X 4' 4")
Top Elev = 1297.03

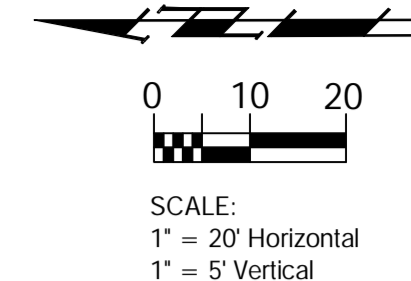


CAUTION
Existing
AT&T Duct
(X 2)
8" Water
Crossings

LINE 5a

Benchmarks

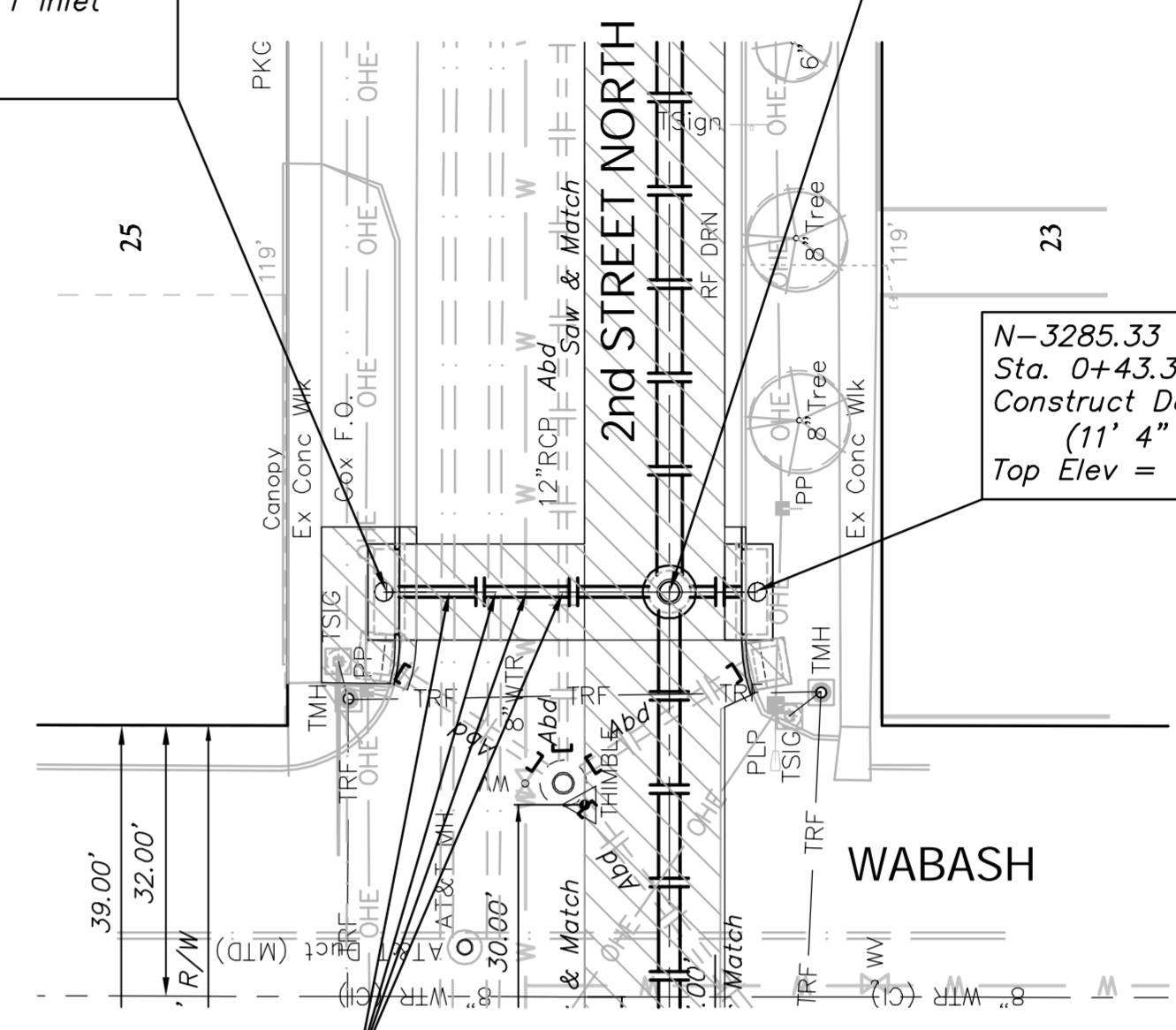
BM #2- Chiseled "+" Located in sidewalk @ the NWPC of the Intersection of Wabash Ave. and 2nd Street North. Elev. = 1297.15 (MSL)



N-3328.67 E-2403.74
Sta. 0+00.00, Begin SWS Line 5b
Construct Double Type 1 Inlet
(11' 4" X 4' 4")
Top Elev = 1296.70

N-3295.35 E-2403.74
Sta. 0+33.32, SWS Line 5b =
Sta. 1+11.59, SWS Line 5
Connect to Prop. Manhole,
Grout, & Seal Tight.

N-3285.33 E-2403.74
Sta. 0+43.36, End SWS Line 5b
Construct Double Type 1 Inlet
(11' 4" X 4' 4")
Top Elev = 1296.65



CAUTION
Existing
AT&T Duct
(X 2)
8" Water
12" SWS
Crossings

LINE 5b

