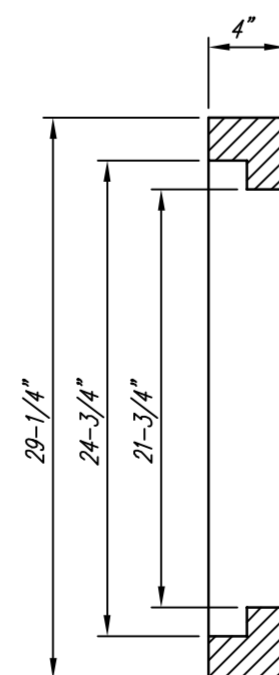
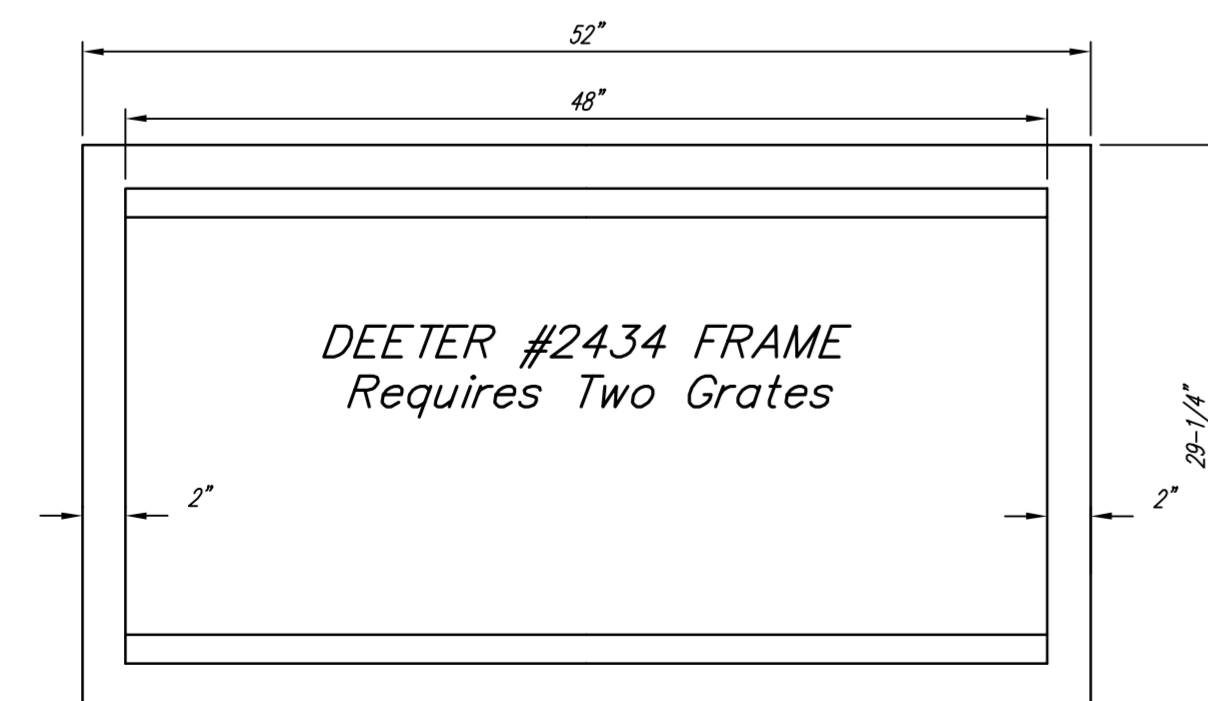


DEETER #2433 GRATE

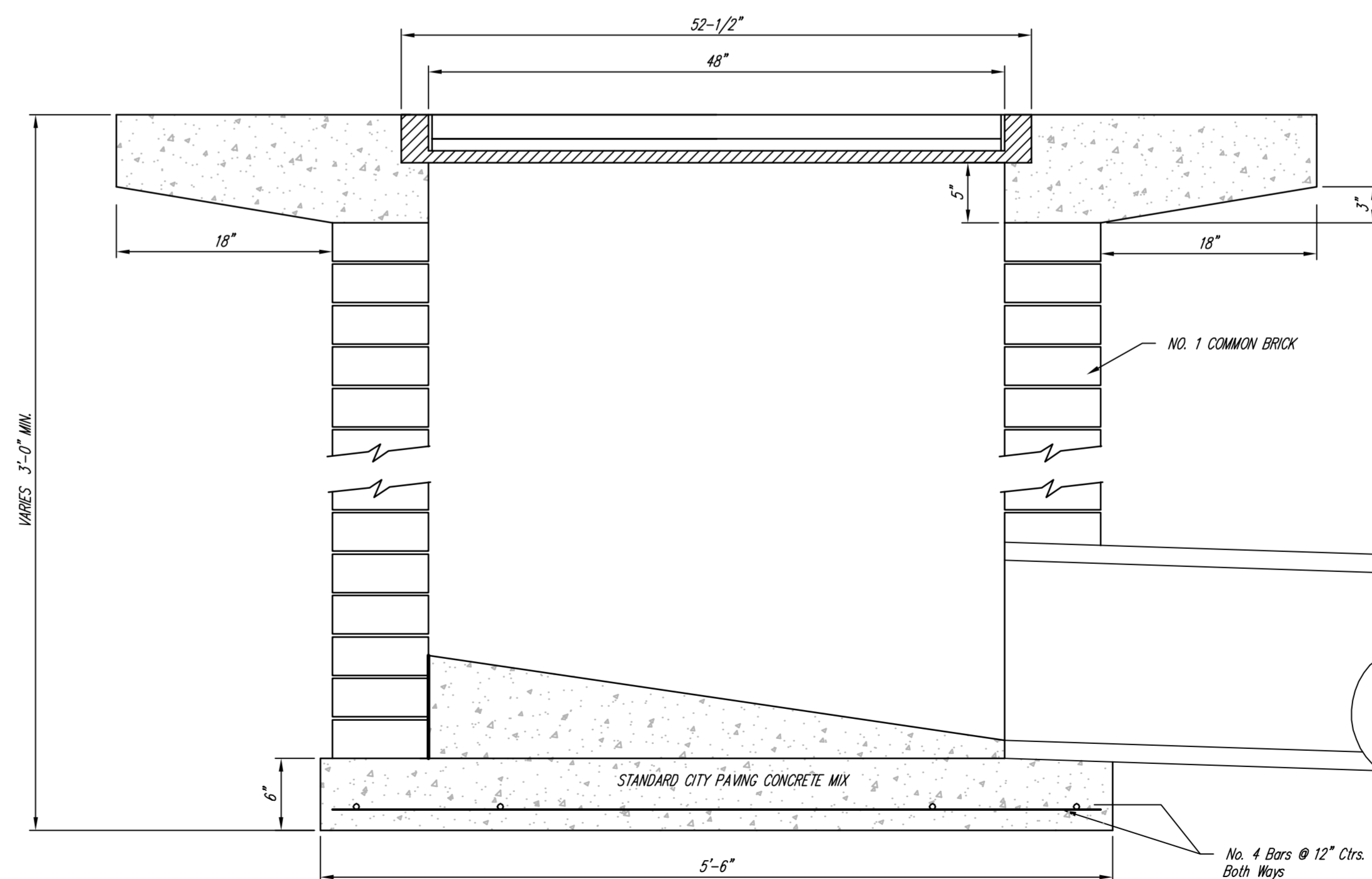
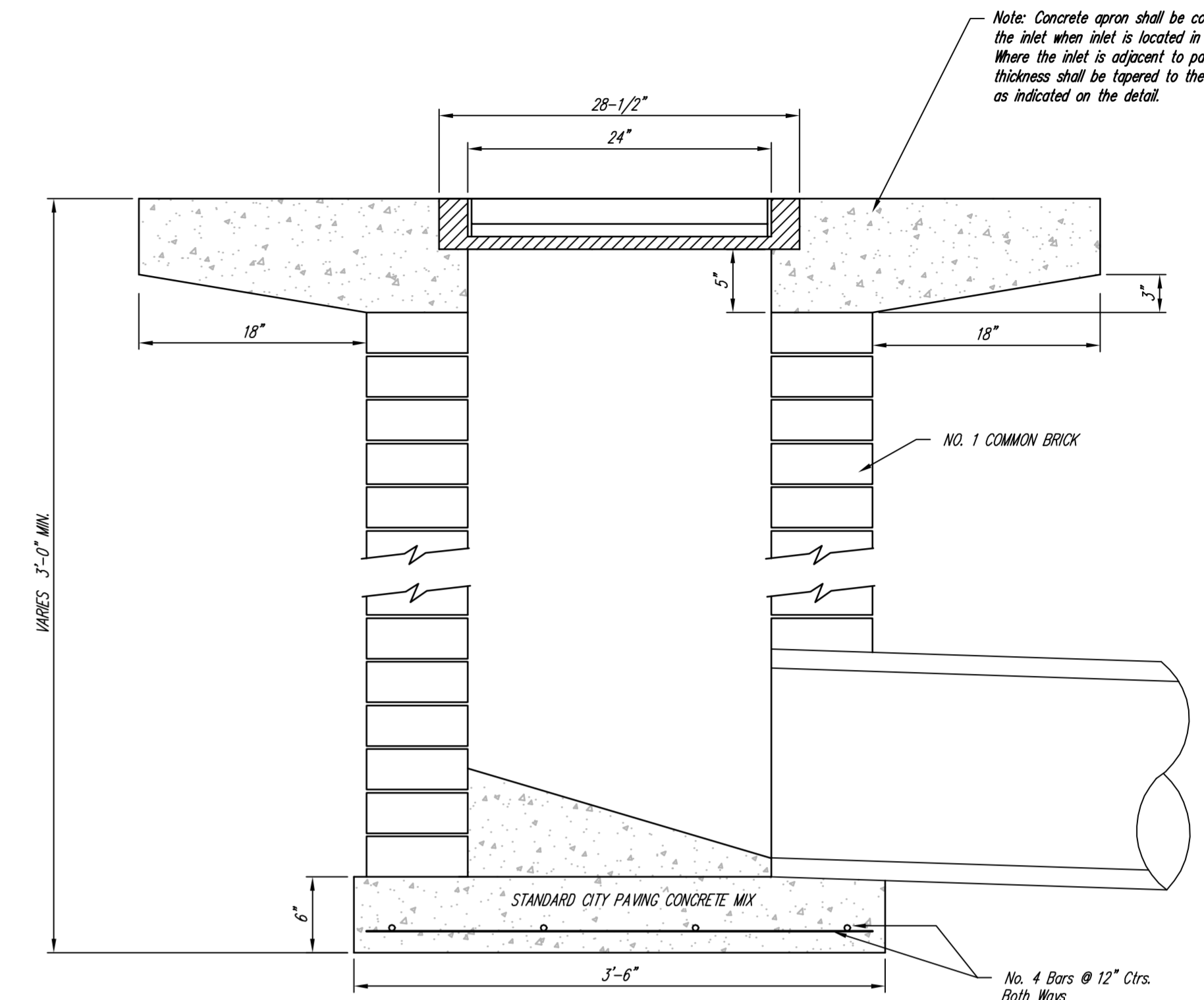
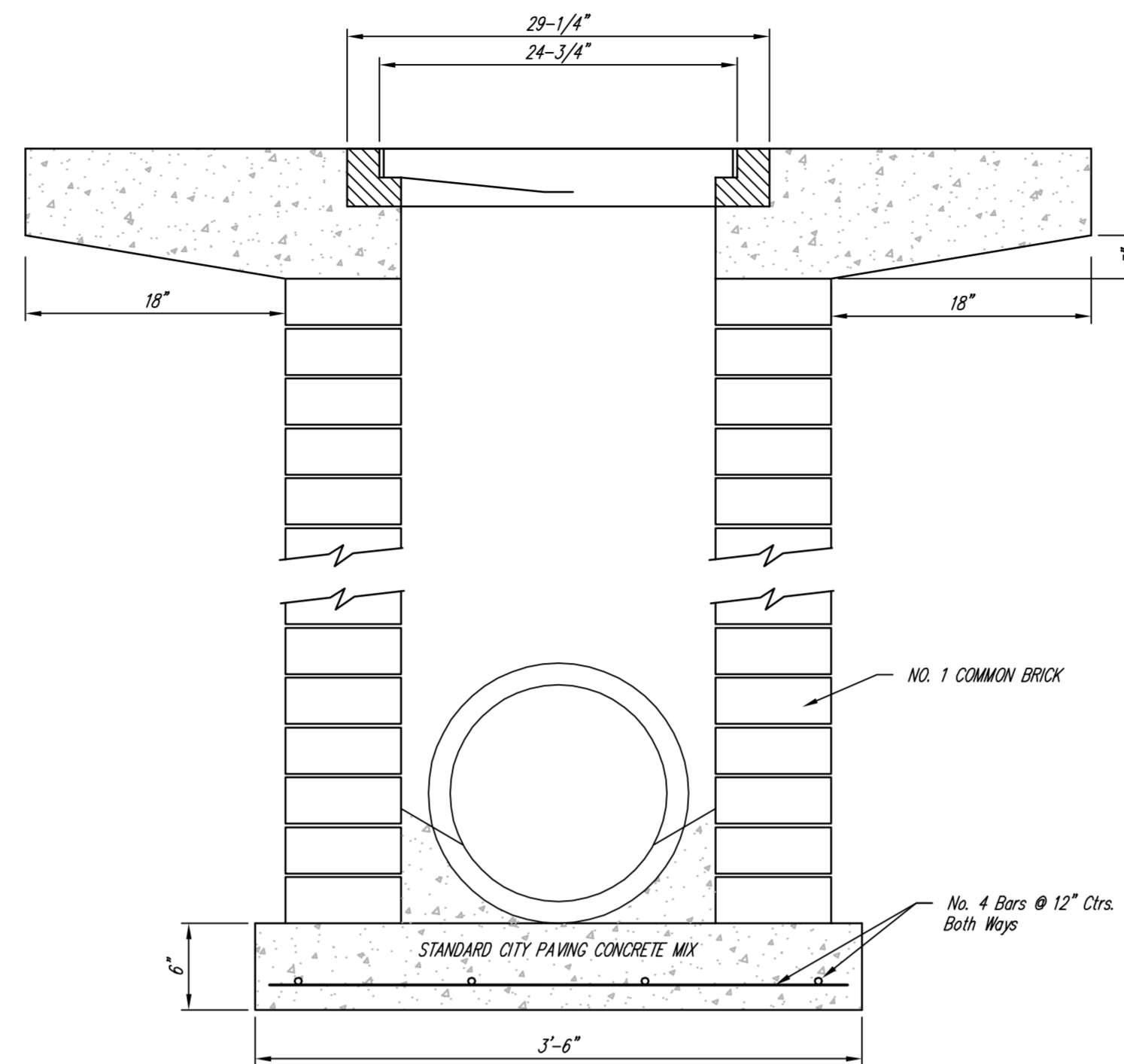
24" x 24" Frame and Grate Detail

NOTE: Grates shall be imprinted on the top surface with "CITY OF WICHITA" using letters at least 1" in height. Other marking methods may be approved by the engineer.



DEETER #2434 FRAME  
Requires Two Grates

Double 24" x 24" Frame Detail



Drawing File: F:\eng\Old Town Drainage Ph 2\Details\Drop Inlet.dwg

Design: City of Wichita  
Drawn: STAFF  
Approved: JFB  
Scale: None

Project No. 0610E682 CITY OF WICHITA, KANSAS

STANDARD DETAILS for DOUBLE  
DROP AREA INLET  
1ST & 2ND STREET EAST DRAINAGE OUTFALL

**Baughman Company, P.A.**  
315 Ellis St., Wichita, KS 67211 P 316-262-0149  
Baughman ENGINEERING | SURVEYING | PLANNING | LANDSCAPE ARCHITECTURE

February 2008  
SHEET 21 OF 54