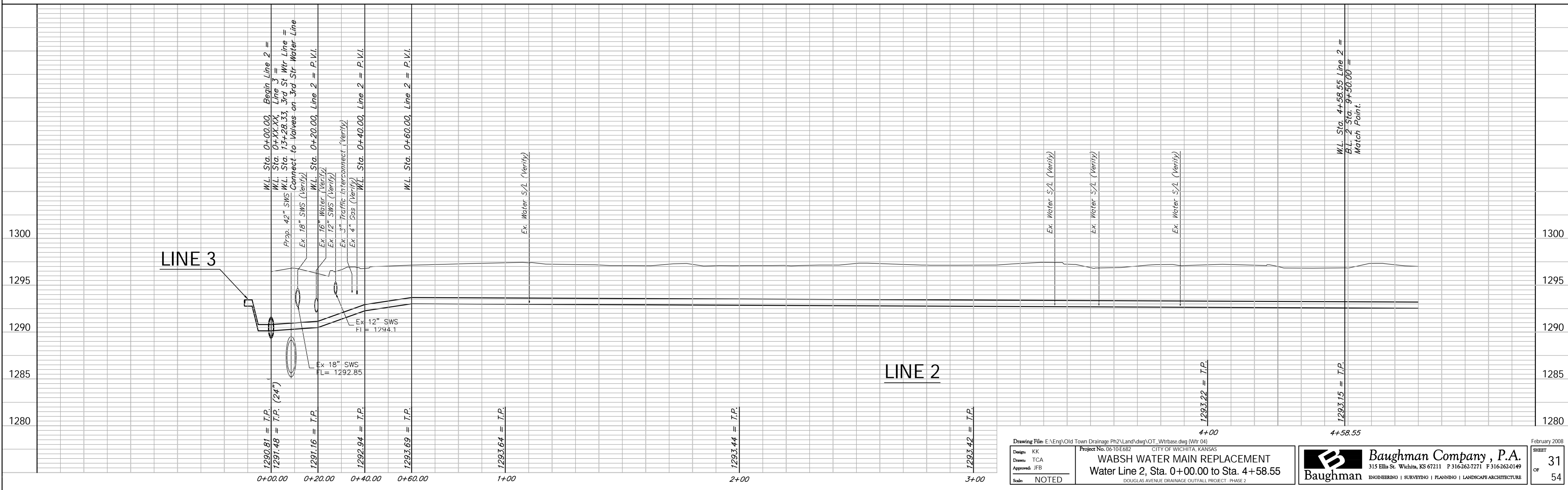
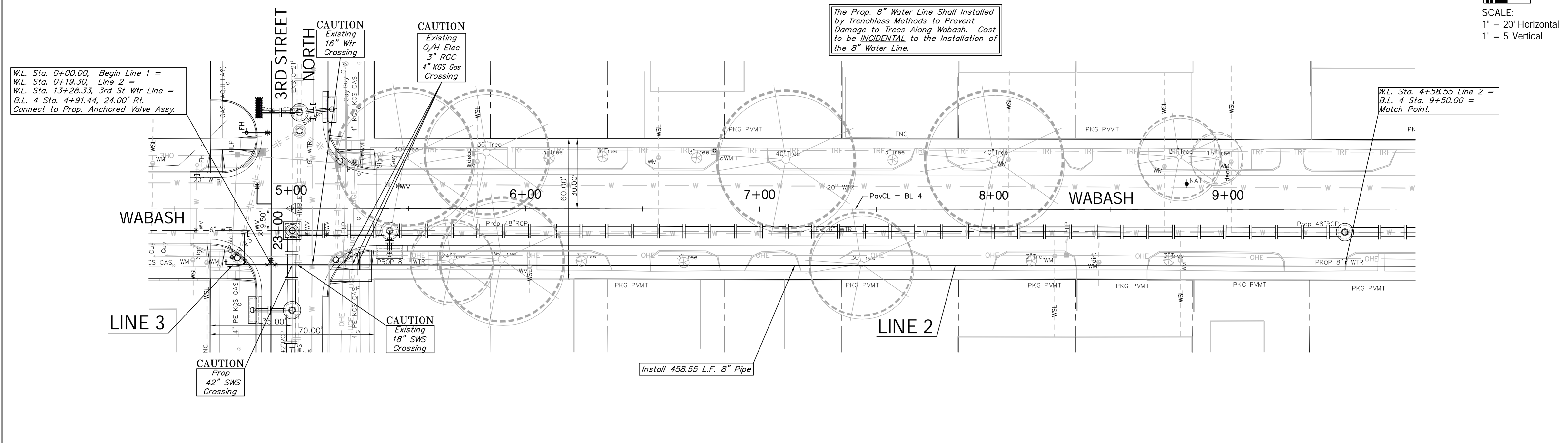
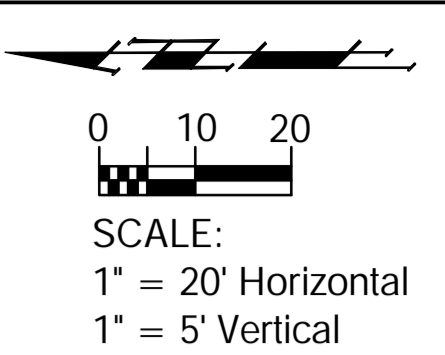


BENCHMARK:  
 BM #3 - Small RR spike Located in South Face of Guy-Pole at the NW  
 Corner of the Intersection of Wabash Ave. and 3rd Street North.  
 Elev. = 1297.94 (MSL)

Note:  
 See Water Meter  
 Table For Service  
 Locations.



|   |  |  |  |
|---|--|--|--|
| Drawing File: E:\Eng\Old Town Drainage Ph2\Land\vdwg\OT_Wtrbase.dwg (Wtr 04)<br>Design: KK<br>Drawn: YCA<br>Approved: JFB<br>Scale: NOTED | Project No. 0610E682<br>CITY OF WICHITA, KANSAS<br><b>WABASH WATER MAIN REPLACEMENT</b><br>Water Line 2, Sta. 0+00.00 to Sta. 4+58.55<br>DOUGLAS AVENUE DRAINAGE OUTFALL PROJECT - PHASE 2 | Baughman Company, P.A.<br>315 Ellis St. Wichita, KS 67211 P 316-262-7171 F 316-262-0149<br>ENGINEERING   SURVEYING   PLANNING   LANDSCAPE ARCHITECTURE | February 2008<br>SHEET<br><b>31</b><br>OF<br><b>54</b> |
|---|--|--|--|