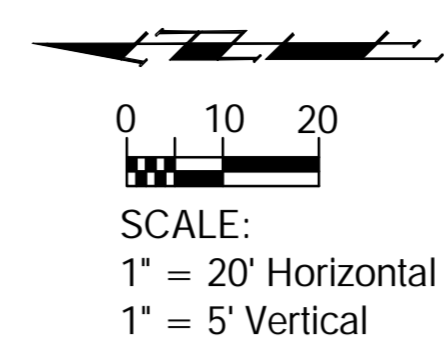
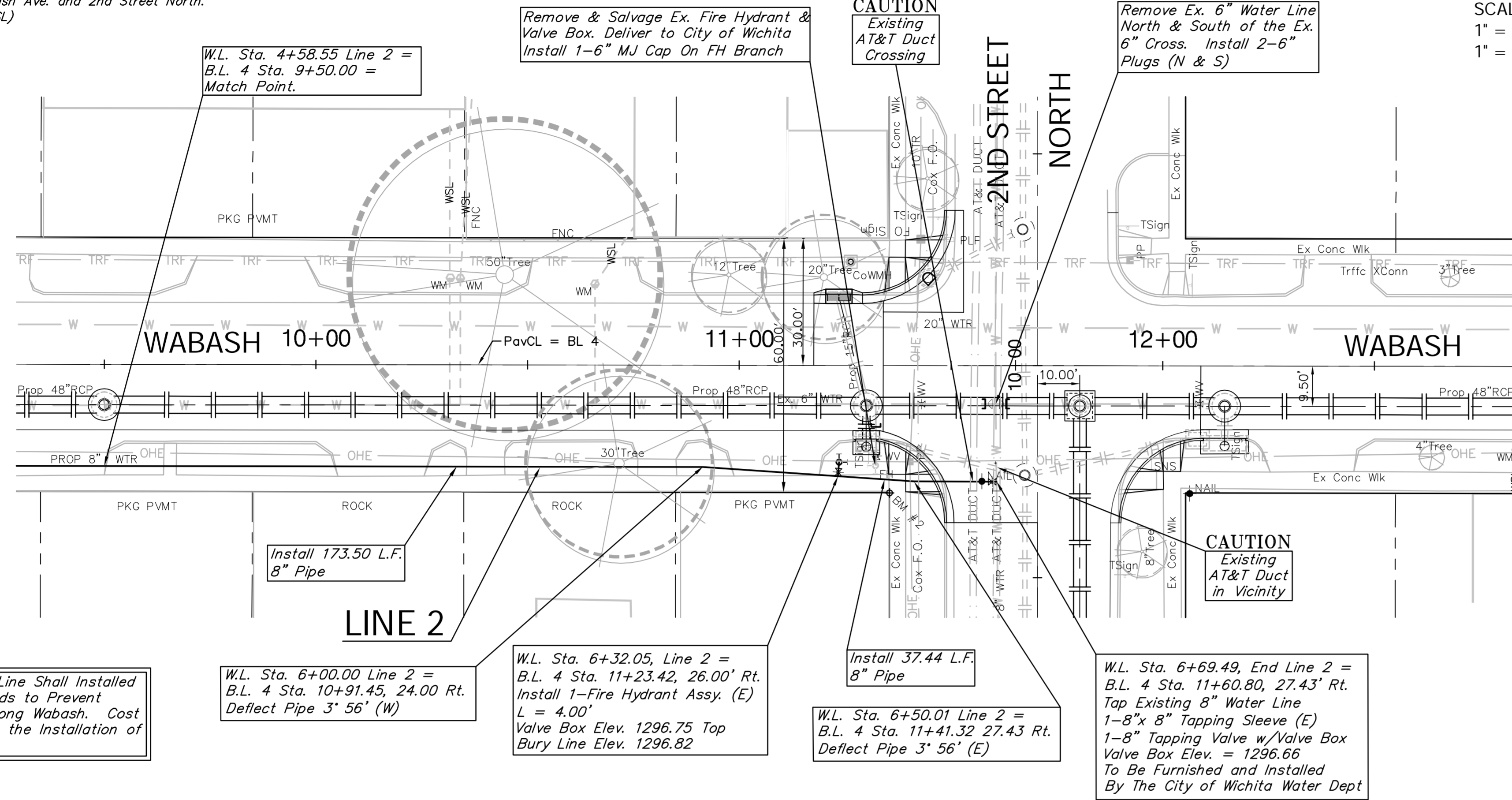
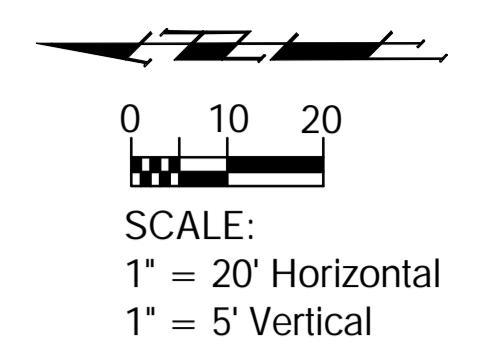
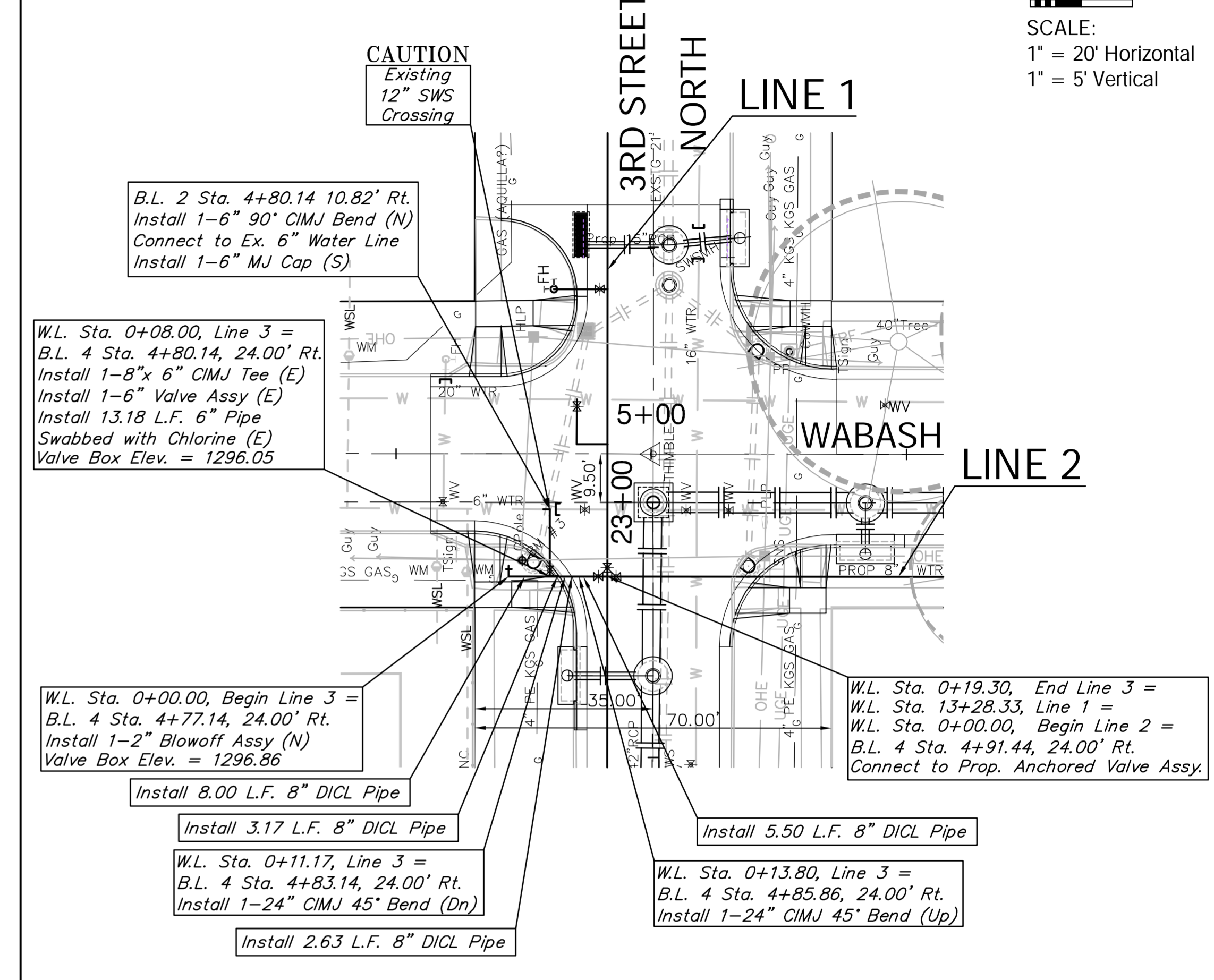


BENCHMARK:
 BM #1- Chiseled "+" Located in sidewalk @ the NEPC of the Intersection of Wabash Ave. and 1st Street North. Elev. = 1295.76 (MSL)
 BM #2- Chiseled "+" Located in sidewalk @ the NWPC of the Intersection of Wabash Ave. and 2nd Street North. Elev. = 1297.15 (MSL)



BENCHMARK:
 BM #3 - Small RR spike Located in South Face of Guy-Pole at the NW Corner of the Intersection of Wabash Ave. and 3rd Street North. Elev. = 1297.94 (MSL)



The Prop. 8" Water Line Shall Installed by Trenchless Methods to Prevent Damage to Trees Along Wabash. Cost to be INCIDENTAL to the Installation of the 8" Water Line.

