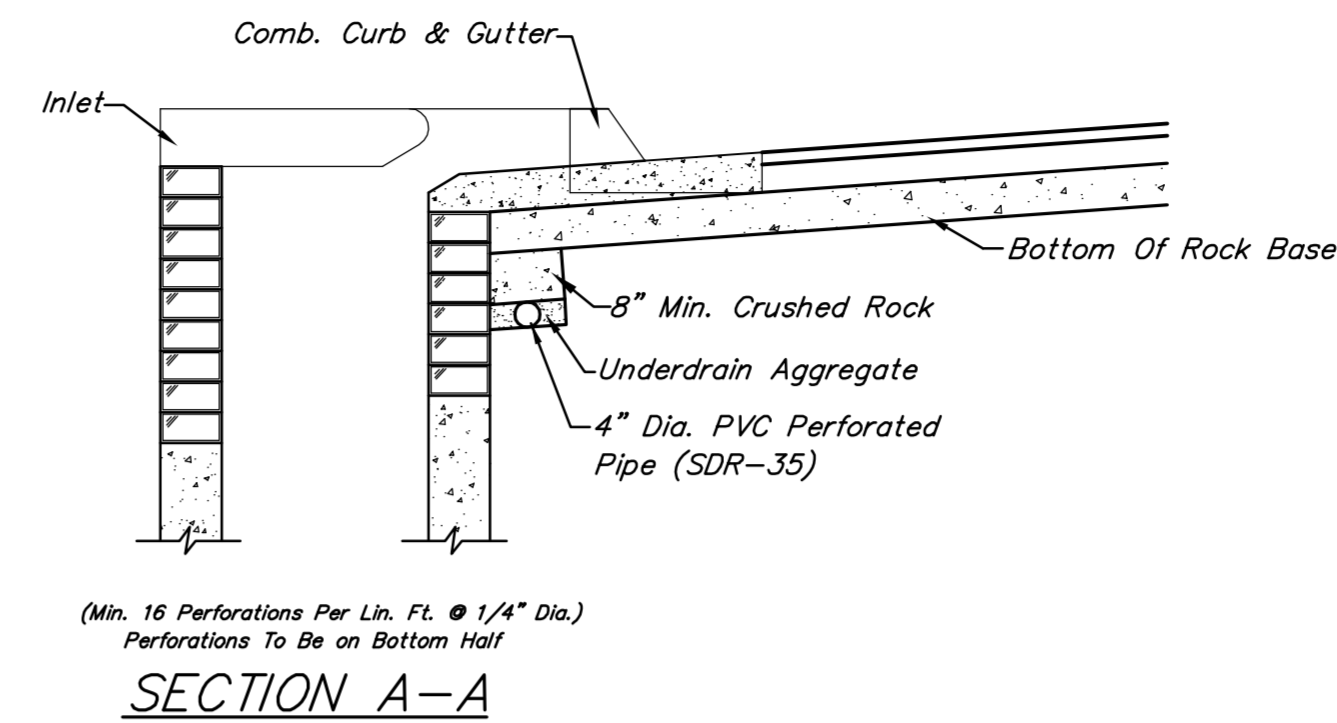


*** UNDERDRAIN AGGREGATE**
Percent of Aggregate Retained

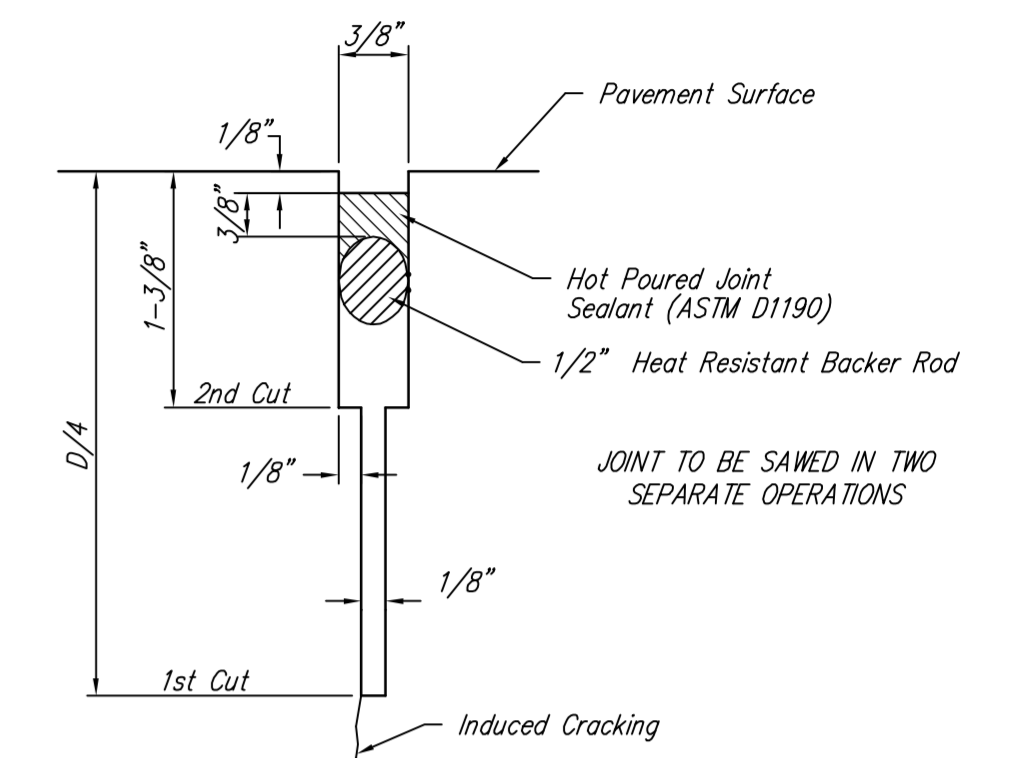
1"	0
3/4"	0 to 10
3/8"	45 to 80
#4	90 to 100
#8	95 to 100

Rock Quality Shall Conform To The Requirements Specified By K.D.O.T. 1990 Edition Standard Specification Subsection 1102 For Durability Class I.

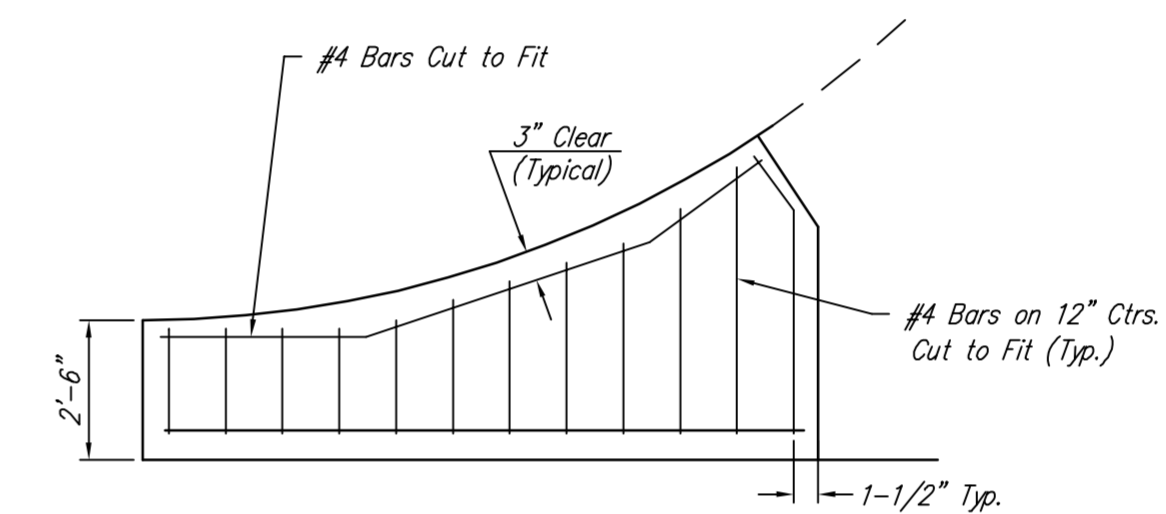
NOTE: Place 4" PVC Perforated Pipe at all drainage sump locations.
Cost of Underdrain System to be **INCIDENTAL** to the Inlet Construction
Inlet Type May Vary From That Shown.



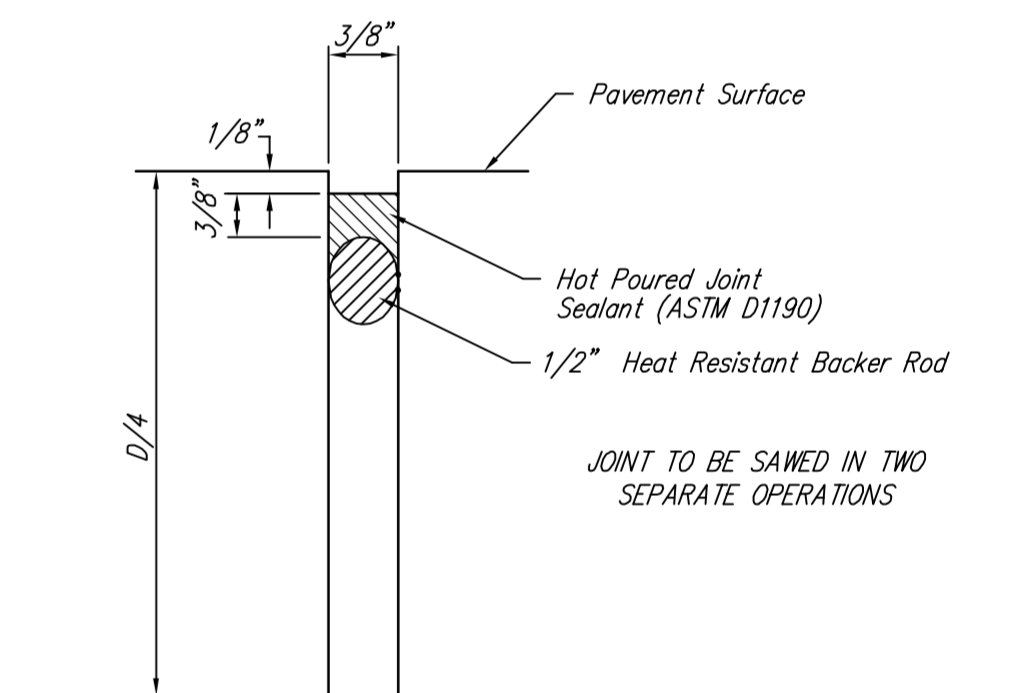
PAVEMENT UNDERDRAIN DETAIL
NOT TO SCALE



SAW JOINT DETAIL "A"



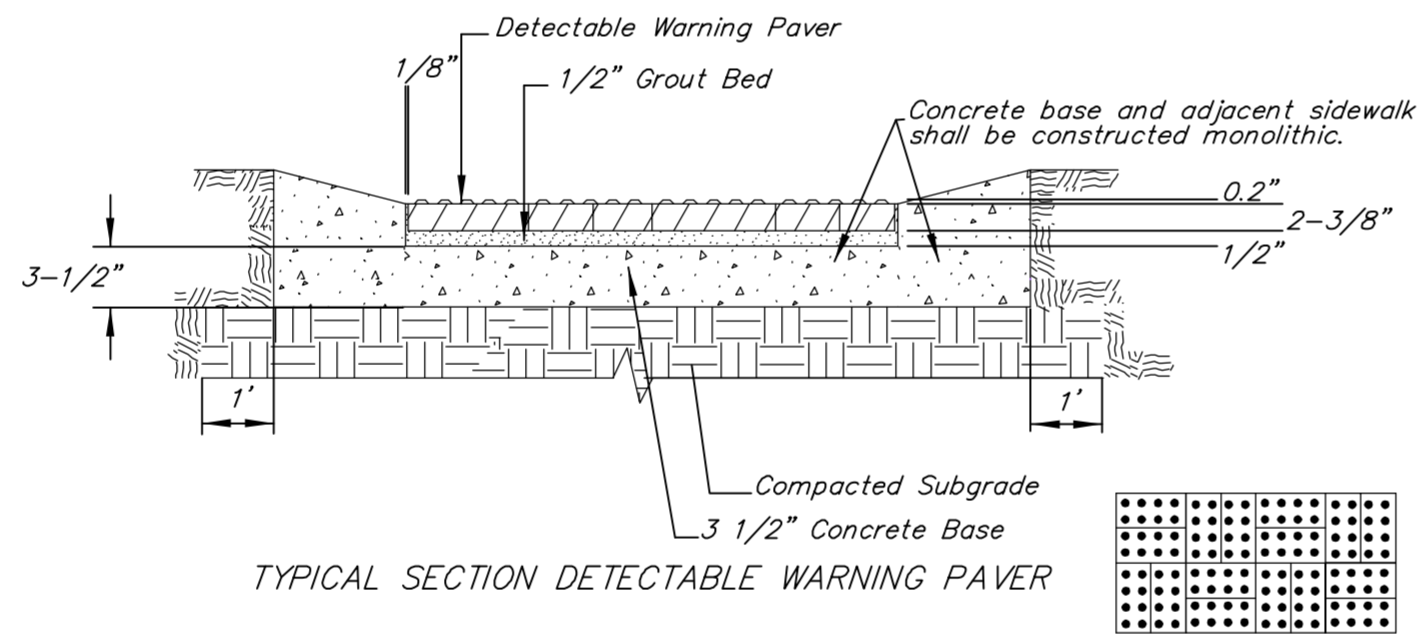
WING REINFORCING DETAIL



SAW JOINT DETAIL "B"

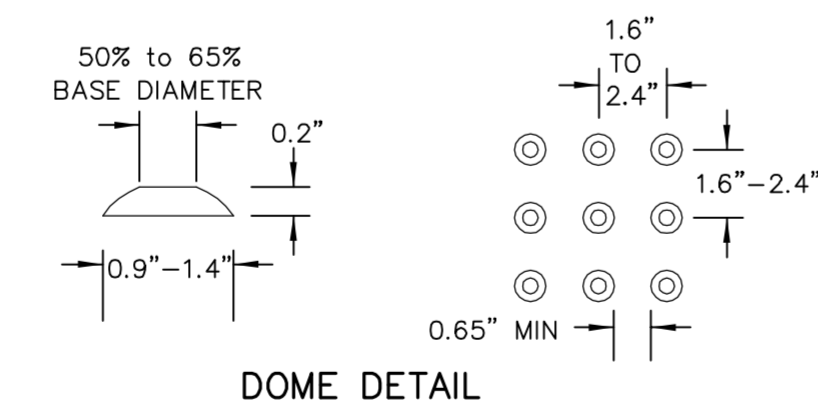
(TYPE A)
STANDARD WHEELCHAIR RAMP WITH
DETECTABLE WARNING
CONSTRUCTION DETAIL FOR STREETS
WITH COMBINED CURB & GUTTER

W= 4'0" FOR STANDARD RAMP
W= 5'0" FOR RAMPS AT SCHOOL CROSSWALKS
(OR TO MATCH EXISTING)

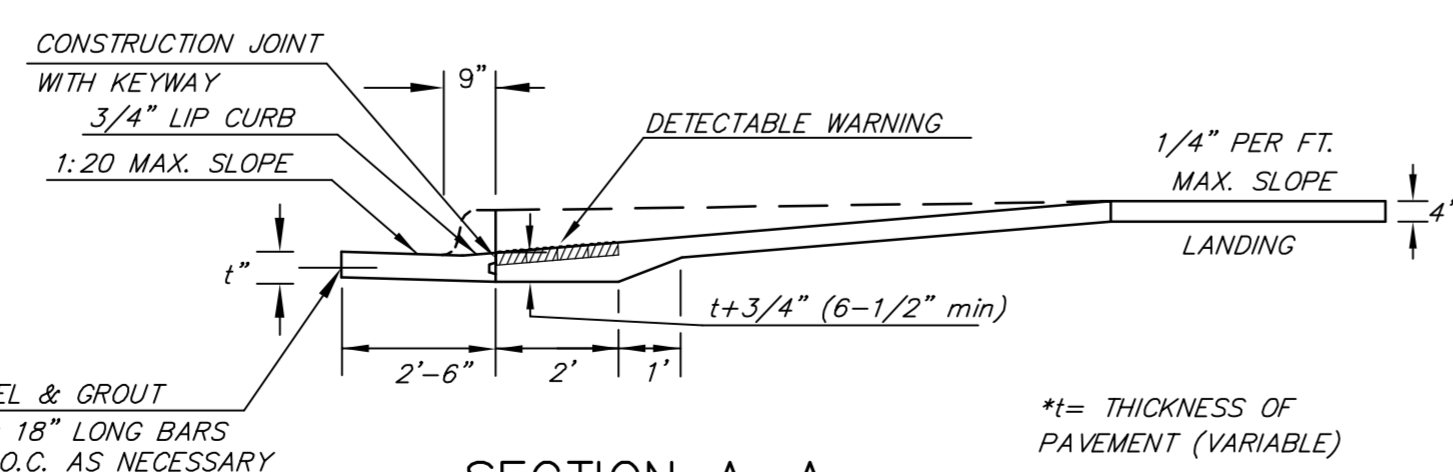


NOTE: RAMPS TO COMPLY WITH LATEST ADAAG GUIDELINES. PAVESTONE DETECTABLE WARNING PAVERS (OR AN APPROVED EQUAL) SHALL BE USED IN ALL WHEELCHAIR RAMPS. THE RED PAVER SHALL BE INSTALLED USING A BASKET WEAVE/PARQUET PATTERN. OTHER PATTERNS MAY BE USED WITH APPROVAL OF ENGINEER. SAND FILL JOINTS. ALIGN DOMES IN THE DIRECTION OF PEDESTRIAN TRAVEL.

SECTION B-B



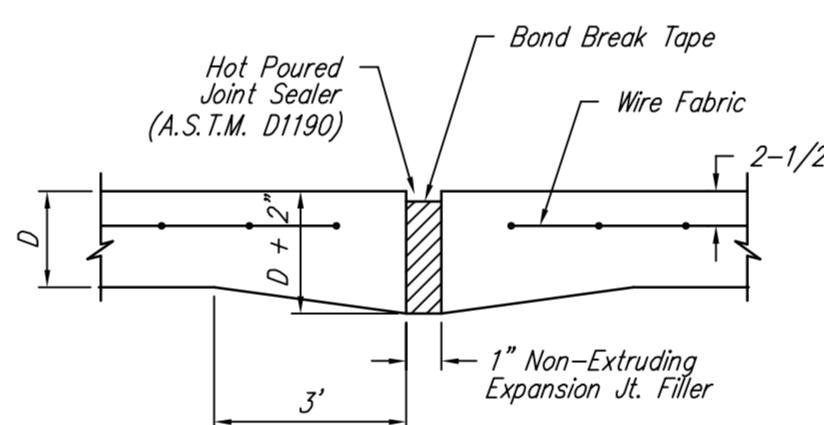
DOME DETAIL



SECTION A-A

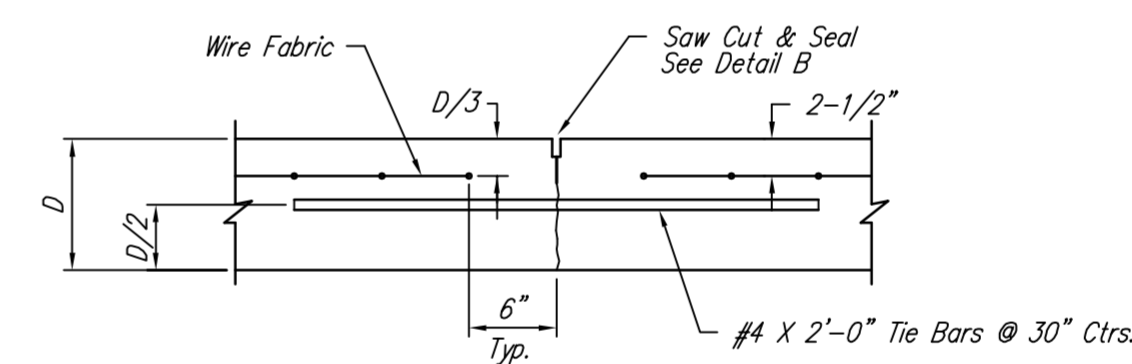
*t= THICKNESS OF PAVEMENT (VARIABLE)

AUGUST 4, 2003

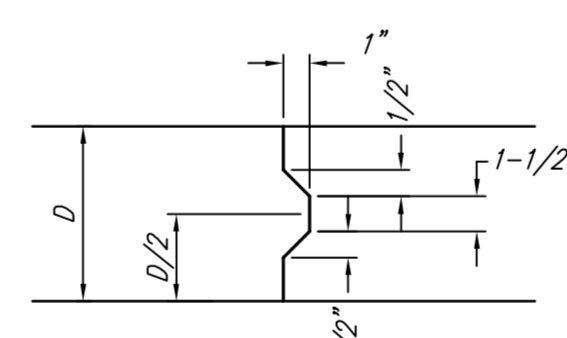


EXPANSION JOINT

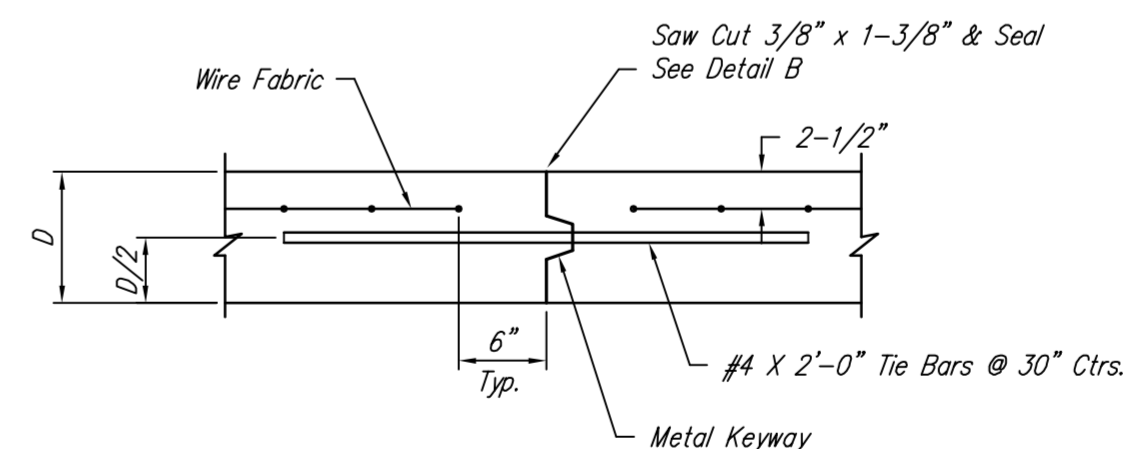
NOTE: Extra Thickness to be Subsidiary to Price of Square Yards Pavement



LONGITUDINAL JOINT DETAIL (L.J.)

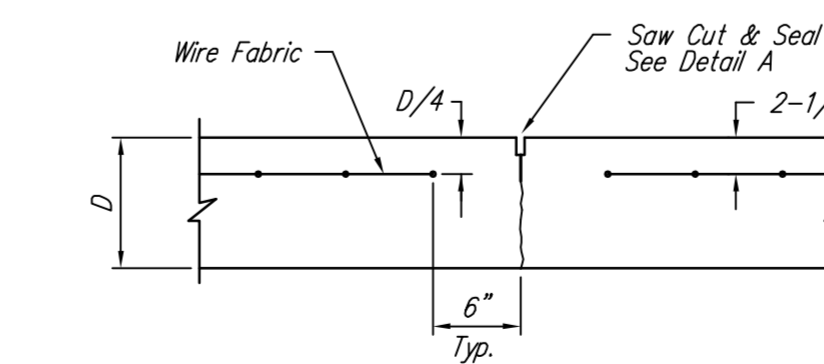


KEYWAY DETAIL

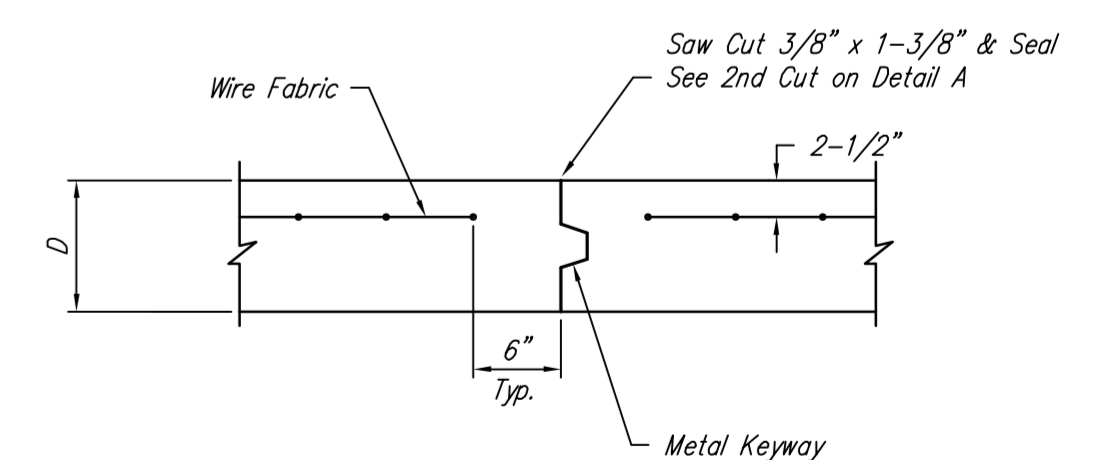


OPTIONAL LONGITUDINAL JOINT DETAIL (L.J.) (CONSTRUCTION JOINT)

NOTE: 6" X 12" W4XW4 Wire Fabric Reinforcing Shall Be Placed So That The Wires With The 6" Spacing Will Run Parallel With The Longitudinal Joints.



CONTRACTION JOINT DETAIL (C.J.)



OPTIONAL CONTRACTION JOINT (CONSTRUCTION JOINT)