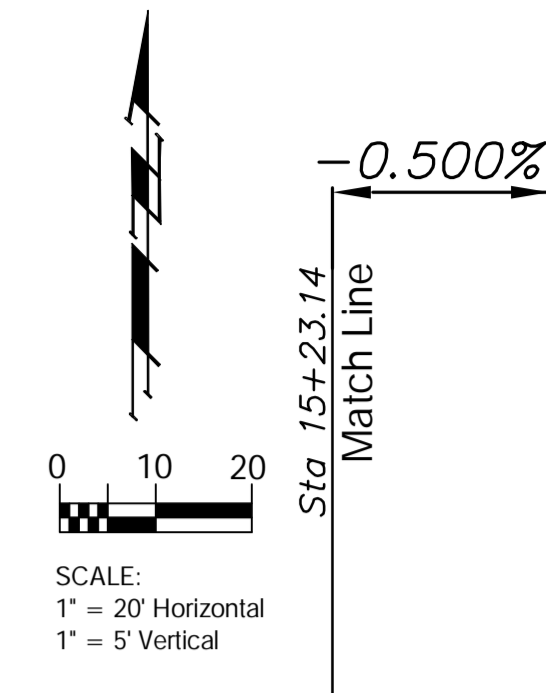
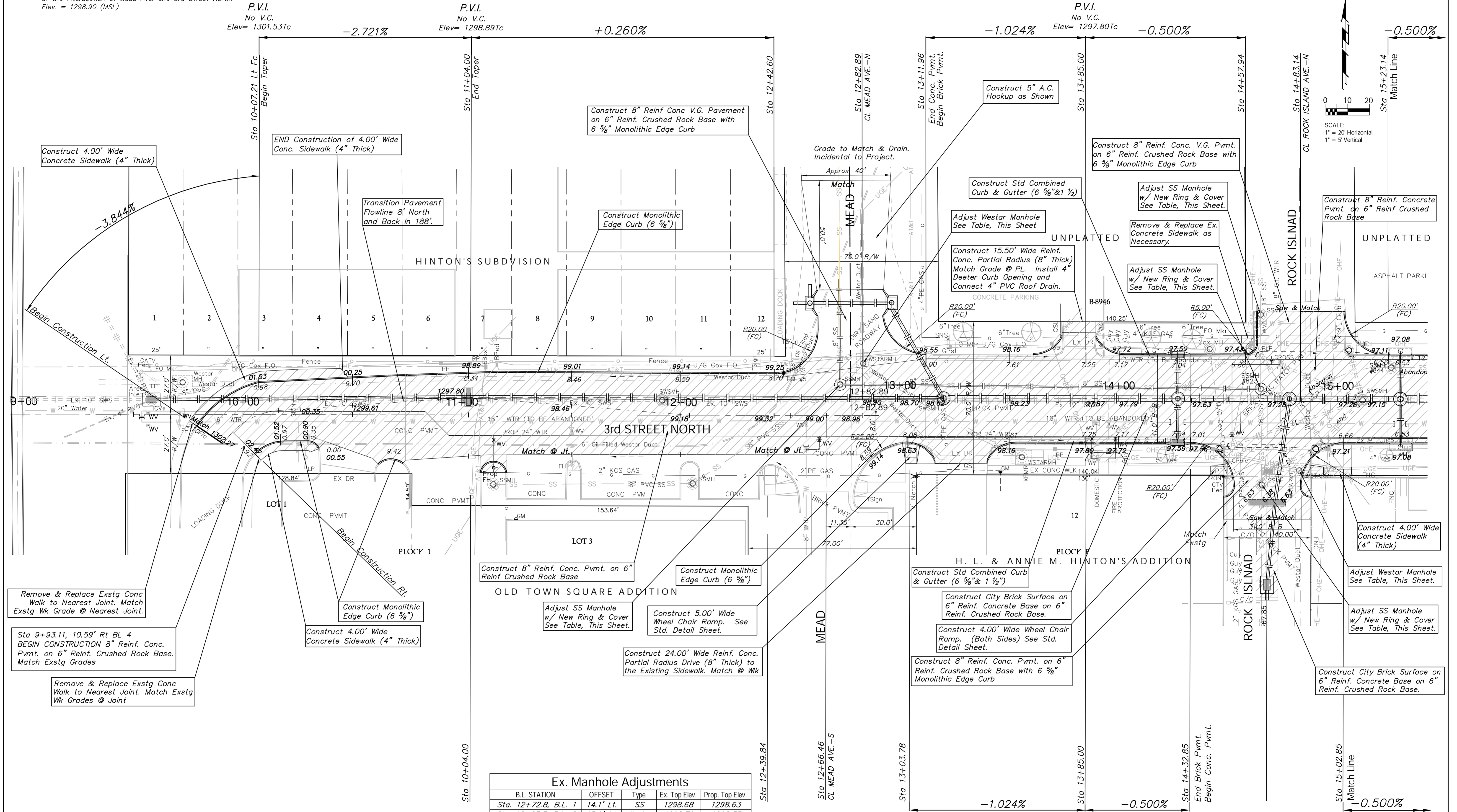


Benchmarks
 BM #5- Chiseled "+" Located top of curb in the Northwest Corner of the Intersection of Mead Ave. and 3rd Street North. Elev. = 1298.90 (MSL)



Note:
 Pavement, Sidewalks, etc. To Be Removed Are Indicated By:

Ex. Manhole Adjustments				
B.L. STATION	OFFSET	Type	Ex. Top Elev.	Prop. Top Elev.
Sta. 12+72.8, B.L. 1	14.1' Lt.	SS	1298.68	1298.63
Sta. 12+83.5, B.L. 2	15.9' Lt.	Westar	1298.79	1298.33
Sta. 14+64.7, B.L. 2	38.4' Lt.	SS	1297.23	1297.25
Sta. 14+64.9, B.L. 2	4.5' Lt.	SS	1297.49	1297.27
Sta. 14+65.4, B.L. 2	39.2' Rt.	SS	1296.58	1297.10
Sta. 14+82.6, B.L. 2	32.7' Rt.	Westar	1296.75	1296.85

Design: KK
 Drawn: TCA
 Approved: JFB
 Scale: NOTED

Project No. 0610E682 CITY OF WICHITA, KANSAS
3RD STREET NORTH PAVING
 DOUGLAS AVENUE DRAINAGE OUTFALL PROJECT, PHASE 2

February 2008
Baughman Company, P.A.
 315 Ellis St. Wichita, KS 67211 P 316-262-7271 F 316-262-0149
 ENGINEERING | SURVEYING | PLANNING | LANDSCAPE ARCHITECTURE

SHEET **39** OF **54**