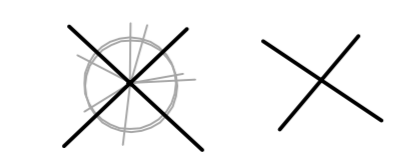


Benchmarks  
 BM #4 - Small RR spike Located in South Face of Pwr-Pole at the NE Corner of the Intersection of Mosley and 3rd Street North.  
 Elev. = 1297.92 (MSL)

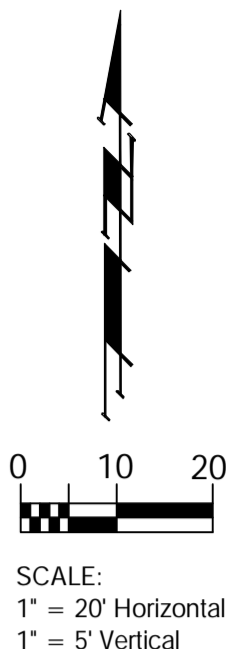
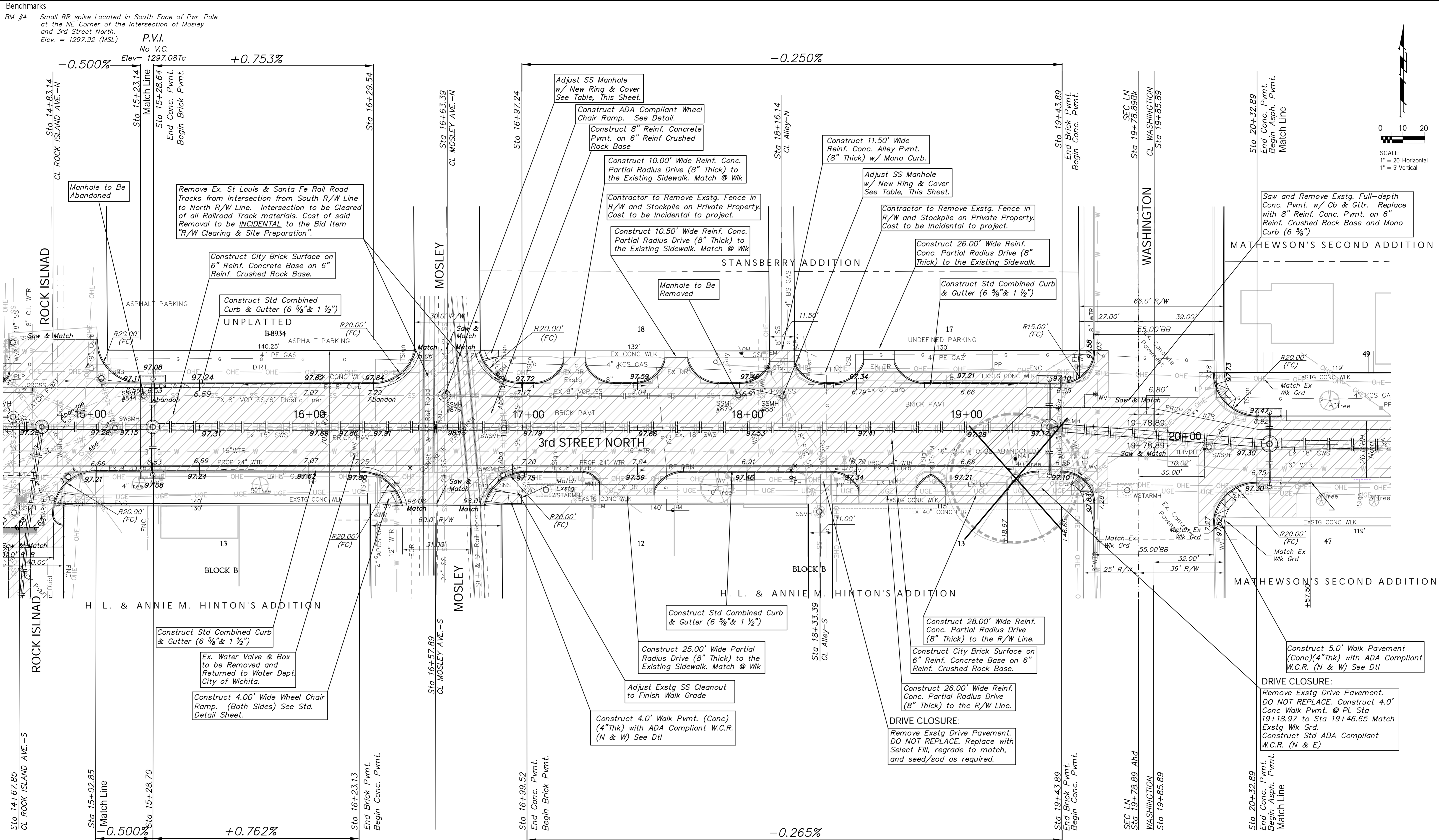
P.V.I.  
 No V.C.  
 Elev= 1297.08Tc

P.V.I.  
 No V.C.  
 Elev= 1297.08Tc

Note:  
 Trees/Shrubs to be removed are marked thus:



Note:  
 Pavement, Sidewalks, etc. To Be Removed Are Indicated By:



Ex. Manhole Adjustments				
B.L. STATION	OFFSET	Type	Ex. Top Elev.	Prop. Top Elev.
Sta. 16+61.8, B.L. 2	14.4' Lt.	SS	1298.10	1297.93
Sta. 18+16.2, B.L. 2	14.0' Lt.	SS	1297.35	1297.08

Drawing File: E:\eng\Old Town Drainage Ph 2\Land\drg\oldtown base.dwg (Pav 02)  
 Project No. 0610E682 CITY OF WICHITA, KANSAS  
 Design: KK  
 Drawn: TCA  
 Approved: JFB  
 Scale: NOTED

**3RD STREET NORTH PAVING**  
 DOUGLAS AVENUE DRAINAGE OUTFALL PROJECT, PHASE 2

**Baughman Company, P.A.**  
 315 Ellis St., Wichita, KS 67211 P 316-262-7271 F 316-262-0149  
 ENGINEERING | SURVEYING | PLANNING | LANDSCAPE ARCHITECTURE