

PRIVATE SANITARY AND STORM WATER SEWER

TO SERVE
CESSNA AIRCRAFT COMPANY
W-8 BUILDING ADDITION-DOWNDRAFT PAINT BOOTH 10

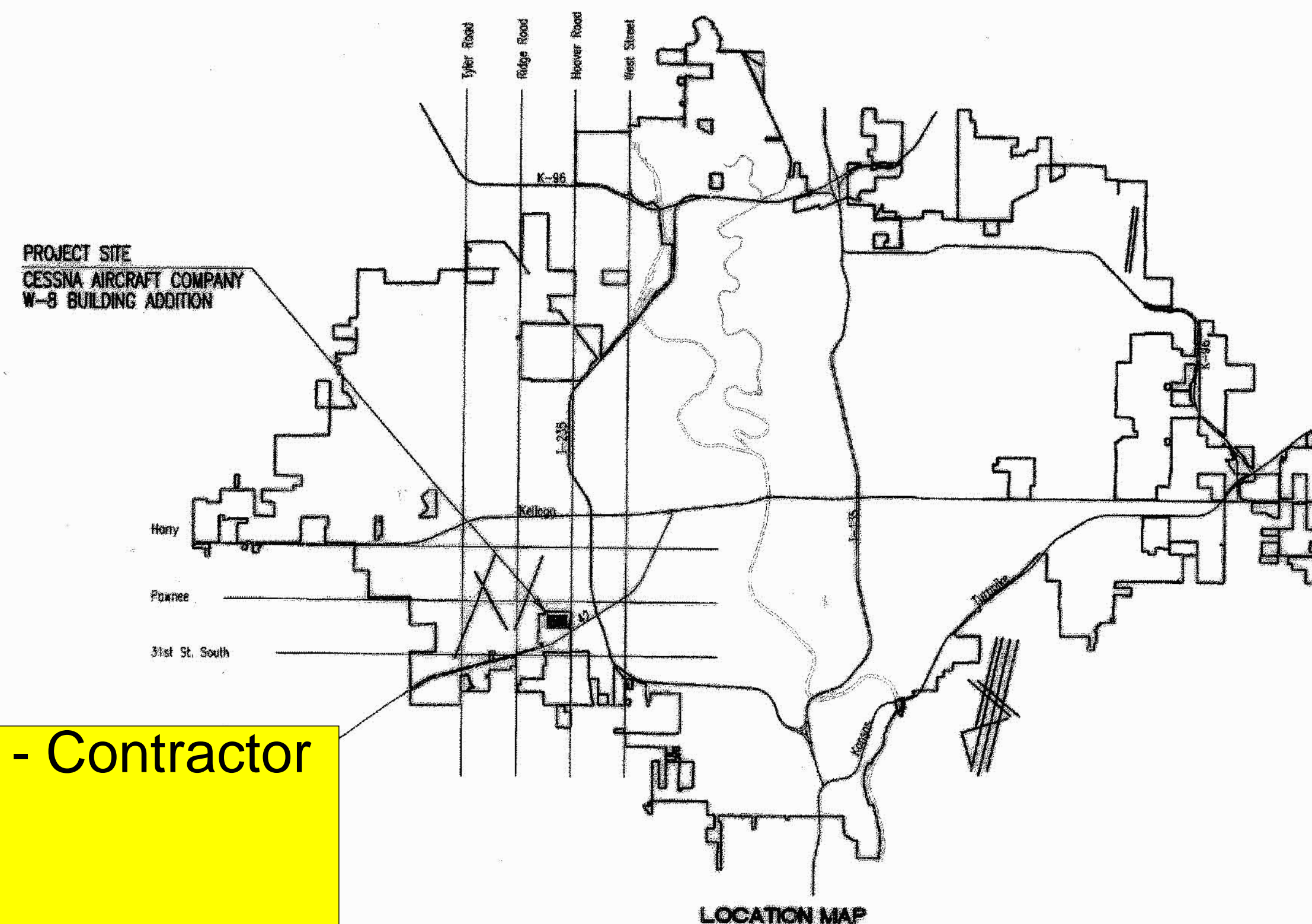
PRIVATE PROJECT NO. 1809 PPS (607861)

CITY OF WICHITA, KANSAS

JAMES L. ARMOUR, P.E. - CITY ENGINEER

INDEX OF SHEETS

SHEET NO. C2.1	TITLE SHEET
SHEET NO. C2.2	KEY MAP AND GENERAL NOTES
SHEET NO. C2.3	PLAN/PROFILE
SHEET NO. C2.4	SHALLOW TYPE "P" MANHOLE DETAILS
SHEET NO. C2.5	STANDARD MANHOLE DETAILS
SHEET NO. C2.6	FRAME & COVER DETAILS
SHEET NO. C2.7	STANDARD AREA INLET DETAILS
SHEET NO. C3.1-C3.3	SOIL EROSION BMP DETAILS



APPROVED AS NOTED
By CITY ENGINEER OF WICHITA

Sanitary Sewers URH 8/29/07

Storm Sewers URH 8/29/07

Driveway Approaches _____

Paving _____

NOTE TO CONTRACTOR

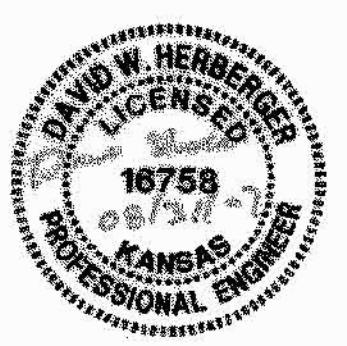
INSPECTION AND TESTING FOR THIS PROJECT IS TO BE PROVIDED BY A LICENSED CONSULTING ENGINEERING FIRM CONTRACTED BY THE OWNER/DEVELOPER. SAID INSPECTION TO BE IN ACCORDANCE WITH THE CITY OF WICHITA STANDARD CONSTRUCTION ENGINEERING PRACTICES AND CERTIFIED BY A LICENSED PROFESSIONAL ENGINEER. NO WORK SHALL BE PERFORMED IN DEDICATED EASEMENTS OR PUBLIC RIGHT-OF-WAY BY THE CONTRACTOR UNTIL SUCH INSPECTION IS ARRANGED FOR AND REQUIRED BONDS HAVE BEEN SUBMITTED TO AND APPROVED BY THE CITY. NOR SHALL ANY WORK BE COMMENCED IN DEDICATED EASEMENTS OR PUBLIC RIGHT-OF-WAY WITHOUT WRITTEN AUTHORIZATION BY THE CITY ENGINEER. IMPROVEMENTS PERFORMED UNDER THIS PROJECT SHALL NOT BE ACCEPTED BY THE CITY UNTIL ALL APPLICABLE DOCUMENTATION HAS BEEN SUBMITTED TO THE CITY ENGINEER. THIS MAY INCLUDE: RECORD DRAWINGS, INSPECTION LOGS, TEST DOCUMENTATION, TV TAPES, AND A CERTIFICATE OF COMPLETION. THE ABOVE SHALL BE PERFORMED BY THE CONSULTING FIRM CONTRACTED TO INSPECT THIS PROJECT.

Dondlinger & Sons Construction Co., Inc. - Contractor
 Kelly, R&B - Inspector
 Released 2/11/08
 As-Built
 JDL 2/12/08

AUGUST 2007

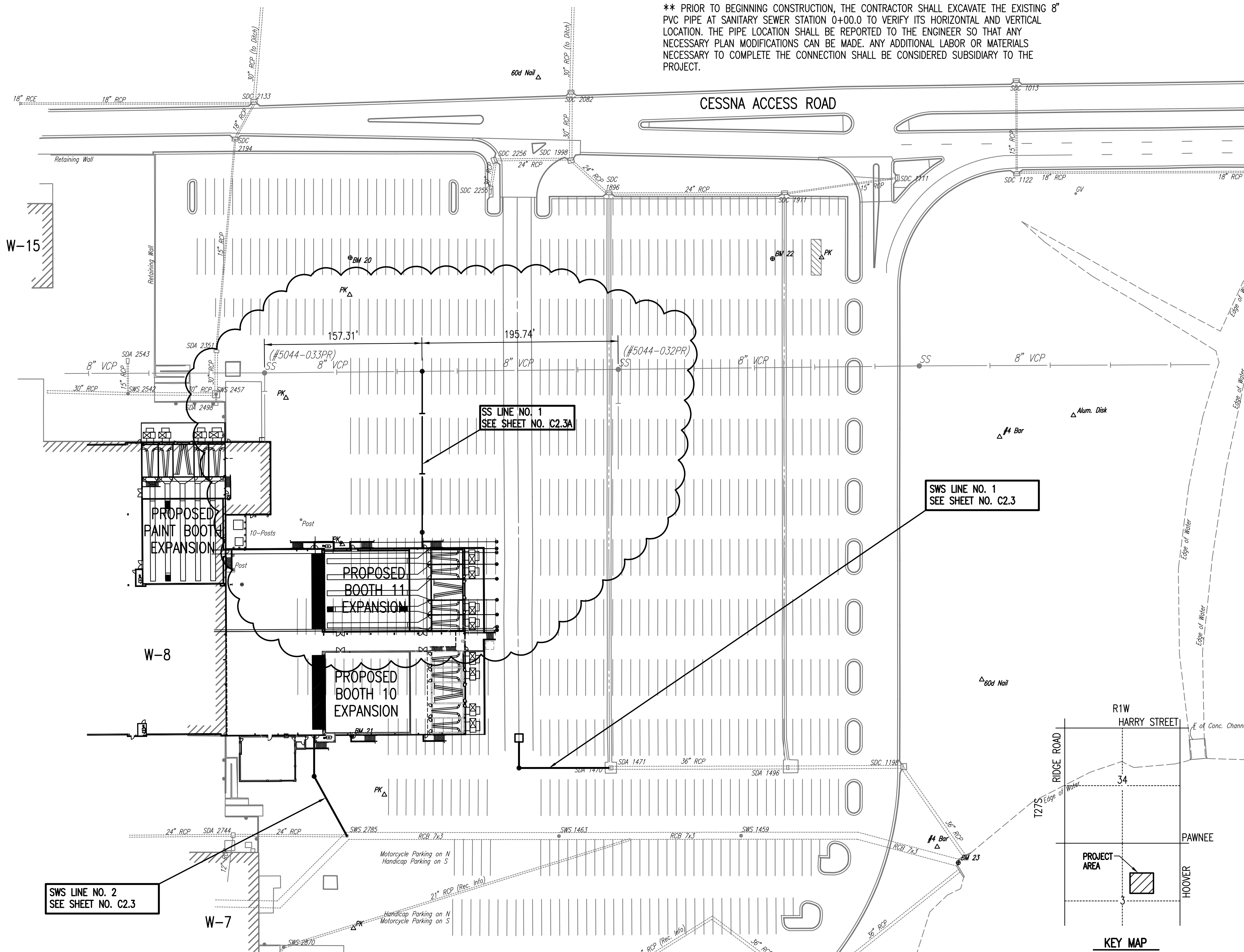
PLANS PREPARED BY
PROFESSIONAL ENGINEERING CONSULTANTS, P.A.
 ENGINEERS
 WICHITA, KANSAS

ASBUILT
 TLK & WC
 R&B 1-3-08



Sheet 08-10-2007 8:00:00 AM by JDL
 Job No. 1809 PPS (607861)
 Date: 08-29-2007 1:43:24 PM by JDL
 C:\WORK\1809 PPS (607861) - 08-29-2007

**** PRIOR TO BEGINNING CONSTRUCTION, THE CONTRACTOR SHALL EXCAVATE THE EXISTING 8" PVC PIPE AT SANITARY SEWER STATION 0+00.0 TO VERIFY ITS HORIZONTAL AND VERTICAL LOCATION. THE PIPE LOCATION SHALL BE REPORTED TO THE ENGINEER SO THAT ANY NECESSARY PLAN MODIFICATIONS CAN BE MADE. ANY ADDITIONAL LABOR OR MATERIALS NECESSARY TO COMPLETE THE CONNECTION SHALL BE CONSIDERED SUBSIDIARY TO THE PROJECT.**



SCALE: 1"=60'

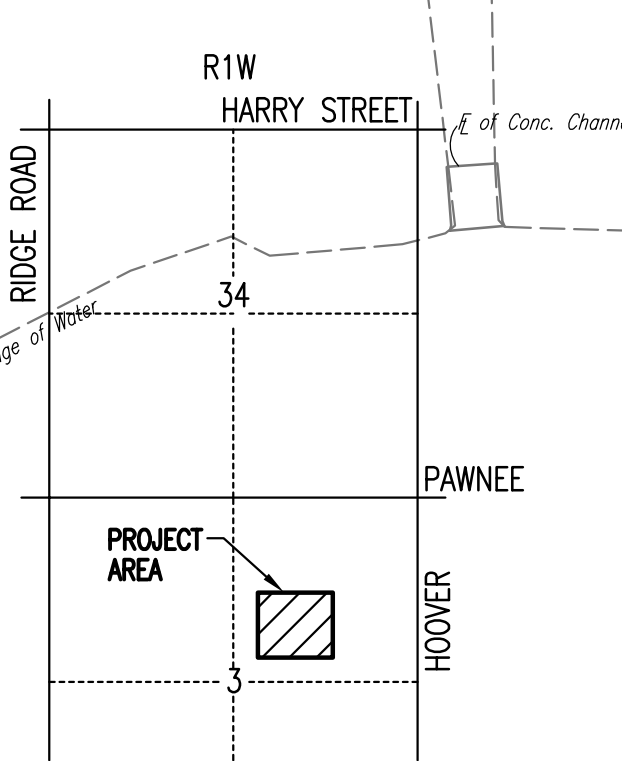
LEGEND

- EXISTING STORM SEWER
- PROPOSED STORM SEWER
- PROPOSED RAIN LEADER
- EXISTING STORM SEWER w/MANHOLE
- PROPOSED STORM SEWER w/MANHOLE
- PROPOSED STORM SEWER AREA INLET
- EXISTING STORM SEWER AREA INLET
- EXISTING STORM SEWER CURB INLET

BENCHMARKS:

- BMK 20:** N-1,671,108.6782, E-1,626,975.3816
CHISELED "G" IN TOP OF SOUTH SIDE OF CONCRETE LIGHT POLE BASE, NW CORNER OF PARKING LOT B, EAST OF BUILDING W-15, 130' N. TO CENTERLINE OF EAST-WEST CESSNA ACCESS ROAD.
ELEVATION = 1301.35
- BMK 21:** N-1,670,631.1388, E-1,626,977.0820
CHISELED "G" ON CONCRETE LIGHT POLE BASE IN PARKING LOT B, SOUTHEAST OF THE NORTHEAST CORNER OF BUILDING W-8.
ELEVATION = 1301.57
- BMK 22:** N-1,671,107.7084, E-1,627,397.0223
CHISELED "G" IN SOUTH SIDE OF TOP OF CONCRETE LIGHT POLE BASE, THIRD LIGHT POLE EAST OF BUILDING W-15, NORTH TIER OF LIGHT POLES IN PARKING LOT B, SE OF WOODEN POWER POLE WITH CYLINDER TRANSFORMER ON TOP, SW OF WOODEN POWER POLE WITH RECTANGULAR TRANSFORMER BOX ON WEST SIDE OF TOP OF POLE.
ELEVATION = 1299.85
- BMK 23:** N-1,670,504.7258, E-1,627,582.4300
CHISELED "G" IN TOP-CENTER OF RCB HEADWALL, NORTHWEST CORNER CESSNA POND, 69.6' WNW TO BACK OF EAST CURB.
ELEVATION = 1298.44
- BMK 7-B:** N-1,671,304.4676, E-1,628,035.9077
RAILROAD SPIKE IN SOUTH FACE OF POWER POLE WITH EAST-WEST OVERHEAD ELECTRIC LINES, NORTH SIDE OF CESSNA ACCESS ROAD, SOUTH OF EAST-WEST DRAINAGE CHANNEL, SW OF CLUMP OF FIVE 18" TREES ON NORTH SIDE OF DRAINAGE CHANNEL, 60' WEST OF RCB.
ELEVATION = 1297.19

KEY MAP



CONTROL POINTS:

- CP #2** N-1,670,951.2420, E-1,627,697.3870
HCP #2 Aluminum Disk
1. 8.2 ft. N to center of steel column at southwest end of turn-stile.
2. 20.4 ft. E to southwest corner of guard shack Building #180-E at Gate 10.
3. 76.70 ft. SW to northeast building corner of Warehouse #3.
Elevation: 1302.66
- CP #3** N-1,669,946.2120, E-1,627,248.6880
HCP #3 Aluminum Disk
1. 23.80 ft. E to north-south chain link fence.
2. 55.16 ft. N to center of round storm drain area inlet.
3. 25 ft. S to center of door marked "3" on east wall of Warehouse #3.
Elevation: 1305.39
- CP #50** N-1,670,929.7794, E-1,627,623.7171
#4 Rebar
Top of north mound.
South of east-west Cessna Access Road.
North of Cessna Pond.
In-line with north face of tall building to west.
In-line with manhole and electric box to the ENE.
31.30 ft. WNW to center of housing lid for air release valve.
Elevation: 1303.89
- CP #51** N-1,670,520.5182, E-1,627,561.4352
#4 Rebar NW of BMK #23
26.27 ft. SE to BMK #23 on RCB headwall on East side pond.
Elevation: 1303.89
- TCP #52** N-1,670,687.4787, E-1,627,605.9351
60d Nail, temporary control
Top of Mound.
First mound south of CP #50.
NW Corner of Cessna Pond
12.8 ft. W. to center of 2 ft. dia. PVC casing.
Elevation: 1302.77

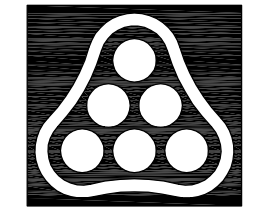
- CP #53** N-1,671,108.8380, E-1,627,445.9887
PK Nail
48.98 ft. W. to BMK #22
Elevation: 1297.84
- CP #54** N-1,671,176.2142, E-1,628,019.7653
#4 Rebar
NNW of drainage weir at north end of Cessna Pond.
11.70 ft. N to south back of curb-west Cessna Access Road.
129.32 ft. N to BMK #7-B
15.12 ft. NW to chiseled "+" in top of south curb.
13.56 ft. NE to chiseled "+" in top of south curb.
Elevation: 1296.68
- TCP #55** N-1,671,288.4236, E-1,627,163.1595
60d Nail, temporary control
1. 40.05 ft. NW to southeast corner of concrete dock.
2. 9.90 ft. N to center of concrete post with convex mirror.
3. 14.30 ft. ESE to center of 1/2 foot diameter chain link fence post
Elevation: 1298.09

- CP #56** N-1,670,822.5431, E-1,626,967.6417
PK Nail
1. 40.05 ft. NW to southeast corner of concrete dock.
2. 9.90 ft. N to center of concrete post with convex mirror.
3. 14.30 ft. ESE to center of 1/2 foot diameter chain link fence post.
Elevation: 1299.48
- CP #57** N-1,670,968.6821, E-1,626,911.3205
PK Nail
1. 40.05 ft. NW to southeast corner of concrete dock.
2. 9.90 ft. N to center of concrete post with convex mirror.
3. 14.30 ft. ESE to center of 1/2 foot diameter chain link fence post.
Elevation: 1299.69
- CP #58** N-1,670,439.2577, E-1,626,978.6126
PK Nail
1. 40.05 ft. NW to southeast corner of concrete dock.
2. 9.90 ft. N to center of concrete post with convex mirror.
3. 14.30 ft. ESE to center of 1/2 foot diameter chain link fence post.
Elevation: 1299.47

- CP #200** N-1,670,572.5977, E-1,627,009.5057
PK Nail
1. 40.05 ft. NW to southeast corner of concrete dock.
2. 9.90 ft. N to center of concrete post with convex mirror.
3. 14.30 ft. ESE to center of 1/2 foot diameter chain link fence post.
Elevation: 1298.93
- CP #201** N-1,671,071.5830, E-1,626,974.9197
PK Nail
1. 40.05 ft. NW to southeast corner of concrete dock.
2. 9.90 ft. N to center of concrete post with convex mirror.
3. 14.30 ft. ESE to center of 1/2 foot diameter chain link fence post.
Elevation: 1298.98

- GENERAL NOTES**
1. ALL CONSTRUCTION AND MATERIALS TO COMPLY WITH CITY OF WICHITA SPECIFICATIONS AND STANDARDS.
 2. ALL ELEVATIONS SHOWN ARE BASED ON USGS DATUM.
 3. AT LEAST 72 HOURS PRIOR TO BEGINNING EXCAVATION (EXCLUDING WEEKENDS AND HOLIDAYS), THE CONTRACTOR SHALL CONTACT THE KANSAS ONE-CALL SYSTEM, A UTILITY LOCATION SERVICE, AT (316) 687-2470 TO REQUEST THE LOCAL UTILITY COMPANIES MARK ANY EXISTING LINES WITHIN THE PROJECT AREA.
 5. UNDERGROUND UTILITY SERVICE LINES AND OVERHEAD UTILITY POLE LINES ARE TO BE ADJUSTED AS NECESSARY BY OTHERS PRIOR TO CONSTRUCTION UNLESS THE PLANS SPECIFICALLY CALL FOR THEIR ADJUSTMENT BY THE CONTRACTOR OR UNLESS THE PLANS SPECIFICALLY IDENTIFY A UTILITY TO BE ADJUSTED BY ITS OWNER DURING CONSTRUCTION. EXISTING UTILITIES AND THEIR LOCATIONS, AS SHOWN ON THE PLANS, REPRESENT THE BEST INFORMATION OBTAINABLE FOR THE DESIGN. THE CONTRACTOR WILL BE REQUIRED TO WORK AROUND EXISTING UTILITIES WITHIN THE RIGHT-OF-WAY WHICH DO NOT CONFLICT WITH PROPOSED CONSTRUCTION.
 6. THE CONTRACTOR SHALL BE RESPONSIBLE FOR PRESERVING PROPERTY IRONS. THE CONTRACTOR WILL BE REQUIRED TO RE-ESTABLISH ANY PROPERTY IRONS WHICH ARE DAMAGED OR DESTROYED BY HIS CONSTRUCTION OPERATIONS. SUCH IRONS SHALL BE RE-ESTABLISHED BY A LICENSED LAND SURVEYOR IN ACCORDANCE WITH STATE LAWS.
 7. RUBBLE FROM THE REMOVAL OF MISCELLANEOUS STRUCTURES INCLUDING ANY TREES REMOVED, TREE TRIMMINGS, AND EXCESS EXCAVATION WHICH IS TO BE WASTED SHALL BE DISPOSED OF ON SITES PROVIDED BY THE CONTRACTOR. THESE SITES SHALL ALSO BE APPROVED BY THE ENGINEER AS TO SUITABILITY, APPEARANCE, AND SITE LOCATION. LOCATIONS THAT, IN THE OPINION OF THE ENGINEER, WILL LEAVE AN UNSIGHTLY APPEARANCE WILL NOT BE APPROVED. ALL DISPOSAL SITES MUST BE APPROVED BY THE KANSAS DEPARTMENT OF HEALTH AND ENVIRONMENT. MATERIAL EITHER STOCKPILED OR DISPOSED OF IN A FLOOD PLAIN WILL REQUIRE A KANSAS STATE BOARD OF AGRICULTURE PERMIT. ANY MATERIAL DUMPED IN WATERS OF THE UNITED STATES OR WETLANDS IS SUBJECT TO U.S. CORPS. OF ENGINEERS PERMITTING REGULATIONS. ANY MATERIAL BURIED OR STOCKPILED BEYOND APPROVED CONSTRUCTION LIMITS MAY REQUIRE ARCHAEOLOGICAL INVESTIGATIONS UNLESS BURIED IN A PREVIOUSLY APPROVED DISPOSAL LOCATION.
 8. THE CONTRACTOR SHALL PREVENT ANY CONSTRUCTION DEBRIS FROM ENTERING THE EXISTING STORM WATER SYSTEM DURING CONSTRUCTION.
 9. ALL APPROVED EXCESS EXCAVATION WHICH IS TO BE WASTED SHALL BE HAULED OFF-SITE AT NO ADDITIONAL COST TO THE OWNER.
 10. CONTRACTOR IS REQUIRED TO MAINTAIN CONTINUOUS FLOW IN EXISTING STORM WATER MAINS AT ALL TIMES.
 11. ALL MANHOLE AND INLET TOPS SHALL BE ADJUSTED TO BE FLUSH WITH FINAL PAVEMENT GRADES.
 12. FOR THIS PROJECT, ALL STORM SEWER LINE EXCAVATION SHALL BE SAND FILLED AND FLUSHED (JETTED AND VIBRATED) WITH WATER PER THE REQUIREMENTS LISTED IN THE STANDARD SPECIFICATIONS FOR THE CITY OF WICHITA, UNLESS FLOWABLE FILL OR OTHER IMPROVED BACKFILL MATERIAL IS OTHERWISE SPECIFIED.

Scaled 11-27-2007 11:15:08 AM by DWH
 Plot Scale 1:60 11-27-2007 9:46:52 PM
 CA:\2006\06521\PPS\06521-000-C-KeyMap

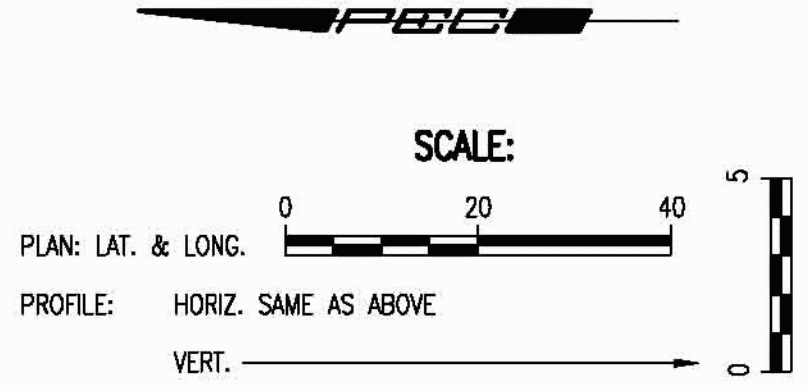
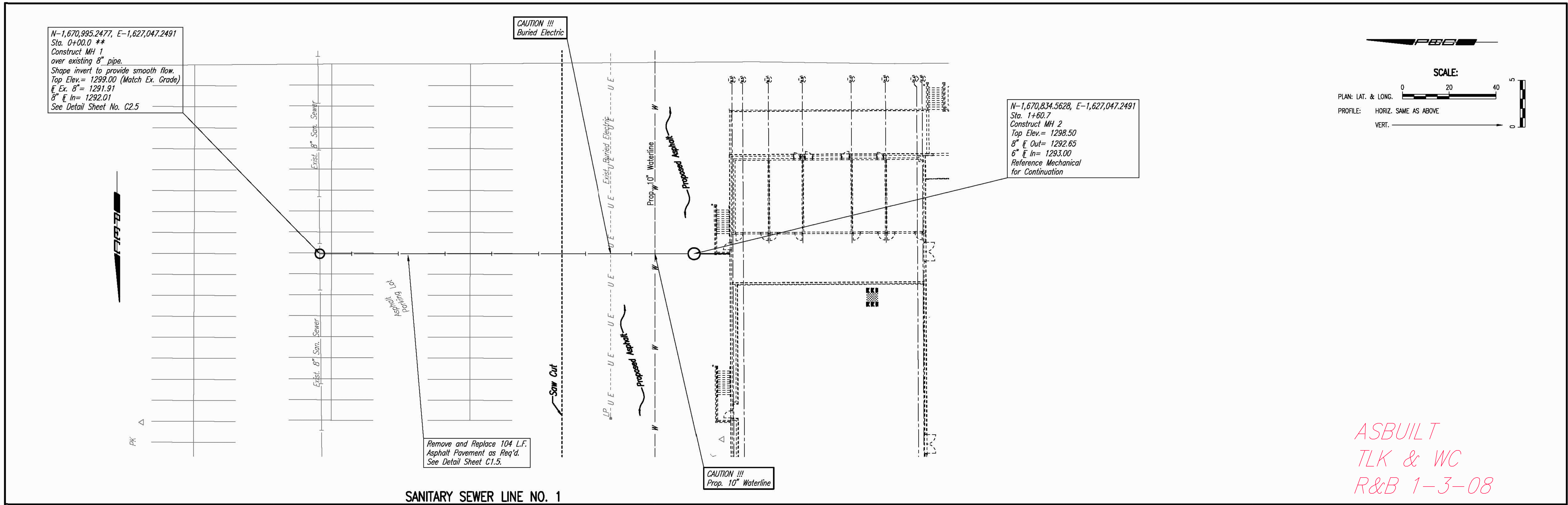


No.	Revision	By	Date
PRIVATE SANITARY AND STORM WATER SEWER CESSNA AIRCRAFT W-8 BUILDING ADDITION-DOWNDRAFT PAINT BOOTH 10 KEY MAP AND GENERAL NOTES JAMES L. ARMOUR, P.E. - CITY ENGINEER PRIVATE PROJECT NO. 1809 PPS (607861)			
Professional Engineering Consultants, P.A. 303 S. TOPKA • WICHITA, KANSAS 67202 316-262-2691 • FAX 316-262-3003			
Designed by	DWH	Job No.	35-06521-2474
Drawn by	SAW	Date	AUGUST 2007
			Sht. C2.2

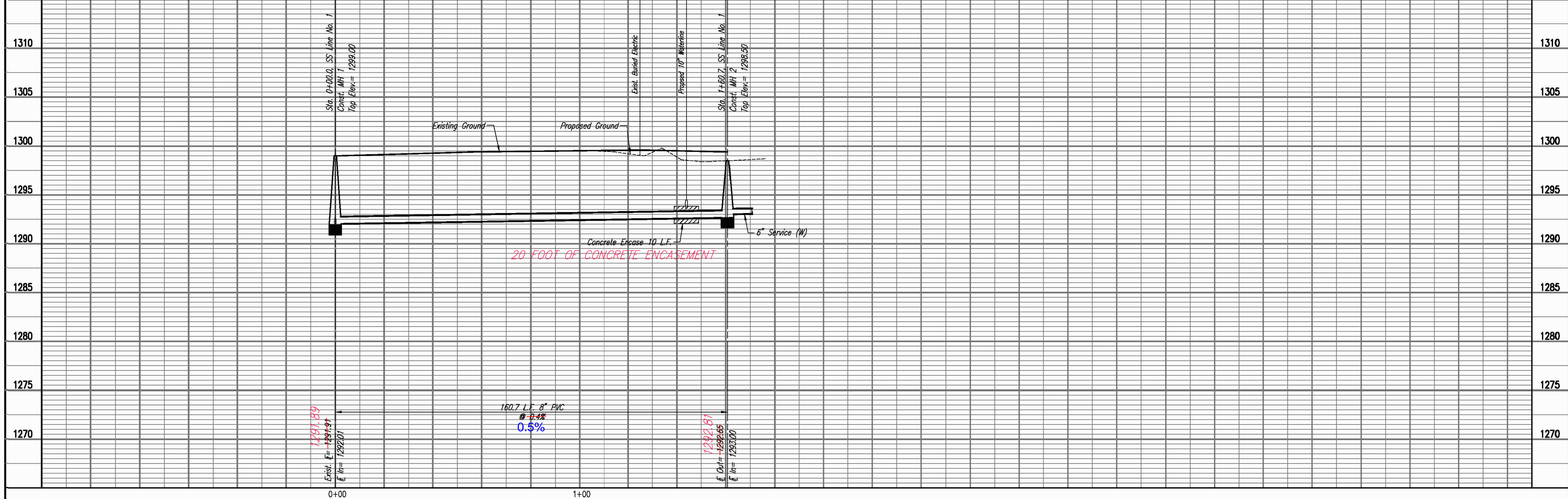
CHECKED
CHECKED
PLAN

CHECKED
CHECKED
PROFILE

Sheet 11 - 08 - 2007 8:43:29 AM by DWH
 Plot Scale: 1" = 20' - 2007 8:57:40 AM by DAVID MALINBERG/DWH
 C:\2008\06521\PPS\06521-000-C-PPSS01_New_S11



ASBUILT
 TLK & WC
 R&B 1-3-08



PRIVATE SANITARY AND STORM WATER SEWER
 W-8 BUILDING ADDITION-DRAFT PANT BOOTH 10
 CESSNA AIRCRAFT

SANITARY SEWER LINE NO. 1
 JAMES L. ARMOUR, P.E. - CITY ENGINEER
 PRIVATE PROJECT NO. 1809 PPS (607861)

Professional Engineering Consultants, P.A.
 303 S. TOPEKA - WICHITA, KANSAS 67202
 316-262-2691 • FAX 316-262-3003

Designed By: DWH Job No.: 35-06521-2474
 Drawn By: AEE Date: AUGUST 2007

Sheet C2.3A of