

MH 1-1
 STA 3+81.41 LINE 1 =
 STA 0+00 LINE 2
 SEE SHEET 2

STA 6+46 TO STA 6+77, LINE 2
 INSTALL 31' L.F. FLOWABLE FILL

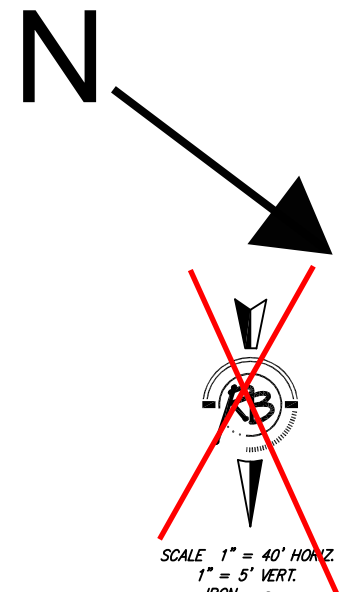
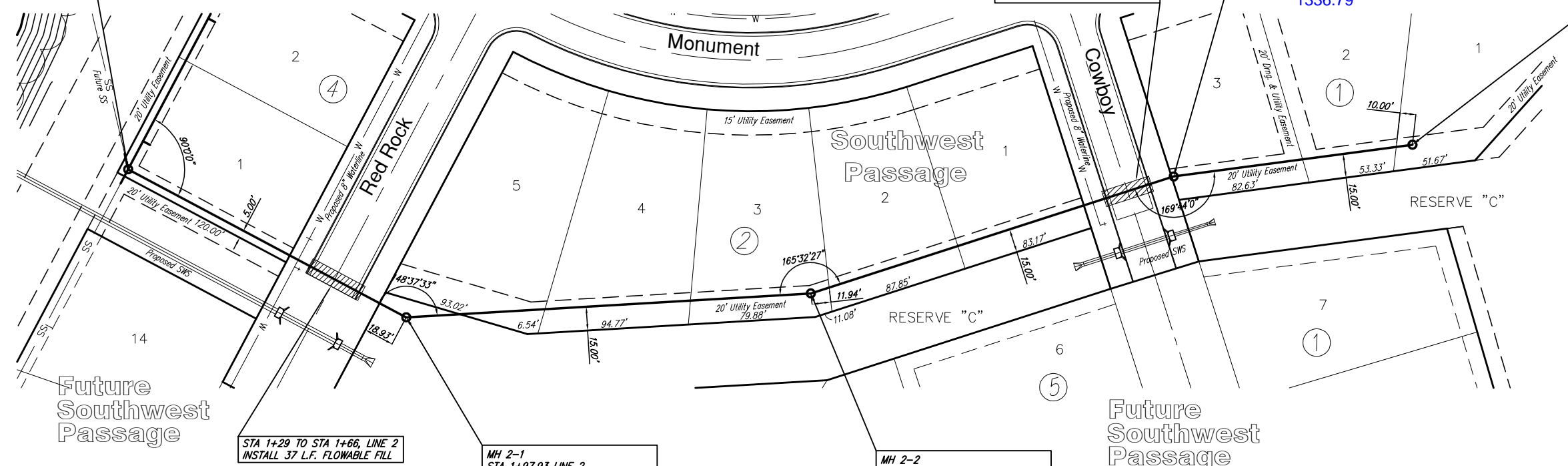
MH 2-3
 STA 6+92.16 LINE 2
 CONSTRUCT STD TYPE P MANHOLE
 TOP ELEV. = ~~1336.80~~
 1336.79

MH 2-4
 STA 8+43.54 LINE 2
 CONSTRUCT STD TYPE P MANHOLE
 TOP ELEV. = ~~1336.80~~
 1336.74

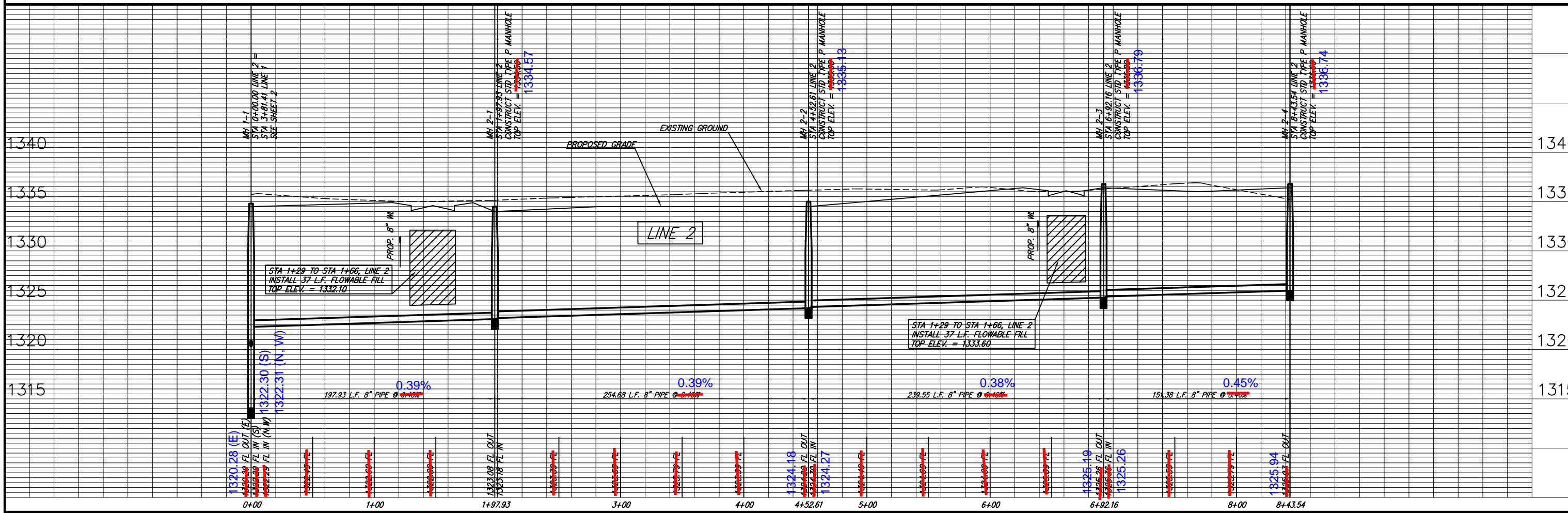
STA 1+29 TO STA 1+66, LINE 2
 INSTALL 37' L.F. FLOWABLE FILL

MH 2-1
 STA 1+97.93 LINE 2
 CONSTRUCT STD TYPE P MANHOLE
 TOP ELEV. = ~~1334.50~~
 1334.57

MH 2-2
 STA 4+52.61 LINE 2
 CONSTRUCT STD TYPE P MANHOLE
 TOP ELEV. = ~~1335.00~~
 1335.13



Ruggles & Bohm, P.A.
 Engineering, Surveying, Land Planning
 1000 Main Street
 Wichita, Kansas 67202
 www.rugglesandbohm.com



PROJECT NUMBER: 468-84228
 PROJECT NAME: Sanitary Sewer [LINE 1A]
 DESIGN: KWL
 DRAWING FILE: Sanitary Sewer [LINE 1A]
 DRAWN: JDM
 DATE: Oct. 16, 2006
 REVIEW: [Blank]
 SHEET: 4 of 16
 PROJECT: SOUTHWEST PASSAGE PHASE 1 Sanitary Sewer WICHITA, KANSAS