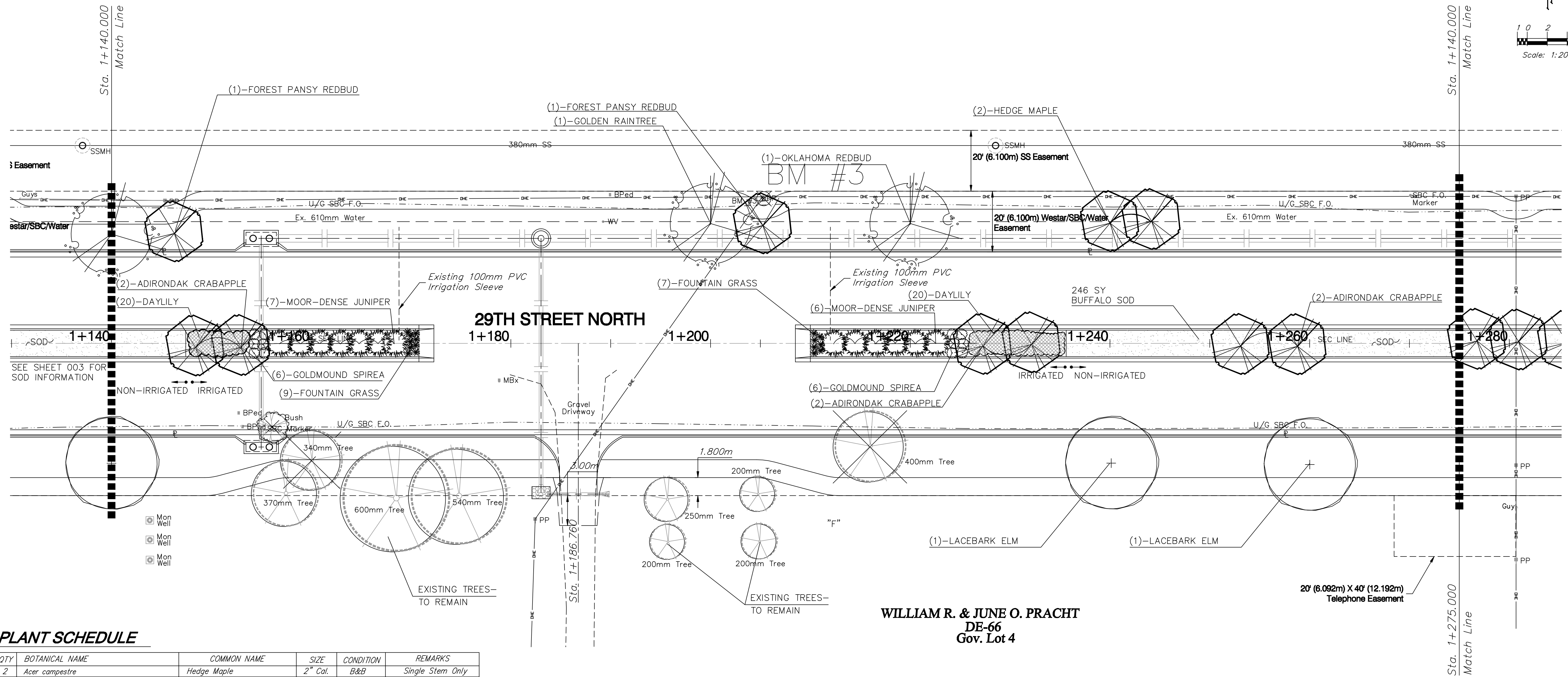
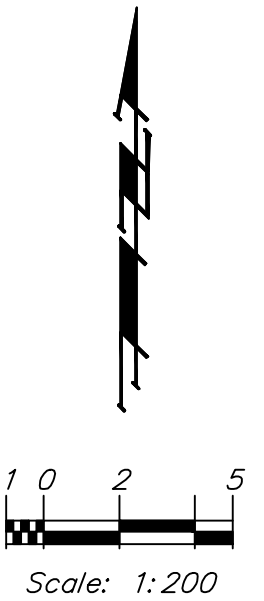


**BENCHMARK:**  
 BM #3 - Small RR Spike in the South Face of the 4th Power Pole East of Maize Road on the North Side of 29th Street North.  
 Sta. 1+205.18, 14.69m Lt.  
 Elev. 412.090 SI Units (1352.00 MSL)

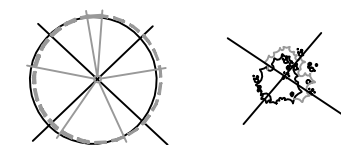
**LEO M. & VIVIAN L. RINK REVOCABLE TRUST**  
**PK-246-1**



**PLANT SCHEDULE**

QTY	BOTANICAL NAME	COMMON NAME	SIZE	CONDITION	REMARKS
2	<i>Acer campestre</i>	Hedge Maple	2" Cal.	B&B	Single Stem Only
2	<i>Cercis canadensis</i> 'Forest Pansy'	Forest Pansy Redbud	2" Cal.	B&B	Single Stem Only
1	<i>Cercis reniformis</i> 'Oklahoma'	Oklahoma Redbud	2" Cal.	B&B	Single Stem Only
1	<i>Koelreuteria paniculata</i>	Golden Rain tree	2" Cal.	B&B	Single Stem Only
6	<i>Malus</i> 'Adirondak'	Adirondak Crabapple	2" Cal.	B&B	Single Stem Only
2	<i>Ulmus parvifolia</i>	Lacebark Elm	2" Cal.	B&B	Single Stem Only
13	<i>Juniperus sabina</i> 'Monard'	Moor-Dense Juniper	2-Gal.	Container	Full & Healthy
12	<i>Spirea japonica</i> 'Goldmound'	Goldmound Spirea	2-Gal.	Container	Full & Healthy
40	<i>Hemerocallis</i> 'Stella de Oro'	Stella de Oro Daylily	1-Gal.	Container	Full & Healthy
16	<i>Pennisetum alopecuroides</i> 'Hameln'	Dwf. Hameln Fountain Grass	1-Gal.	Container	Full & Healthy

Note:  
 Trees/Shrubs to be removed are marked thus:



**WILLIAM R. & JUNE O. PRACHT**  
 DE-66  
 Gov. Lot 4

PROJECT NUMBER <b>472-83863a</b>		SHEET NAME LS04		ENGINEERING DIRECTORY E: 29th - Tyler to Maize		CAPITAL IMPROVEMENT PROJECT 29TH STREET NORTH LANDSCAPING Sta. 1+140.000 to Sta. 1+275.000		BAUGHMAN COMPANY, P.A. ENGINEERING, SURVEYING, & PLANNING 316-282-7271 • 316 ELLIS • WICHITA, KANSAS 67211		SHEET 4 OF 18
DESIGN NLS	DRAWN NLS	APPROVED BDT	DATE April 07	SCALE Noted	BAUGHMAN NO 02-02-E232					