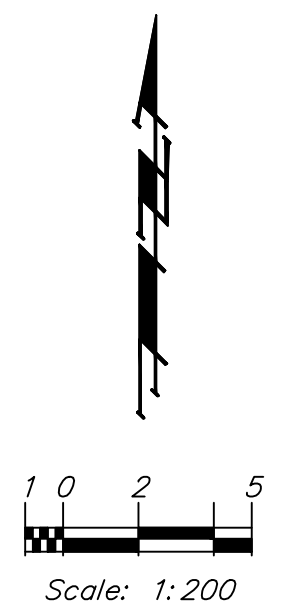
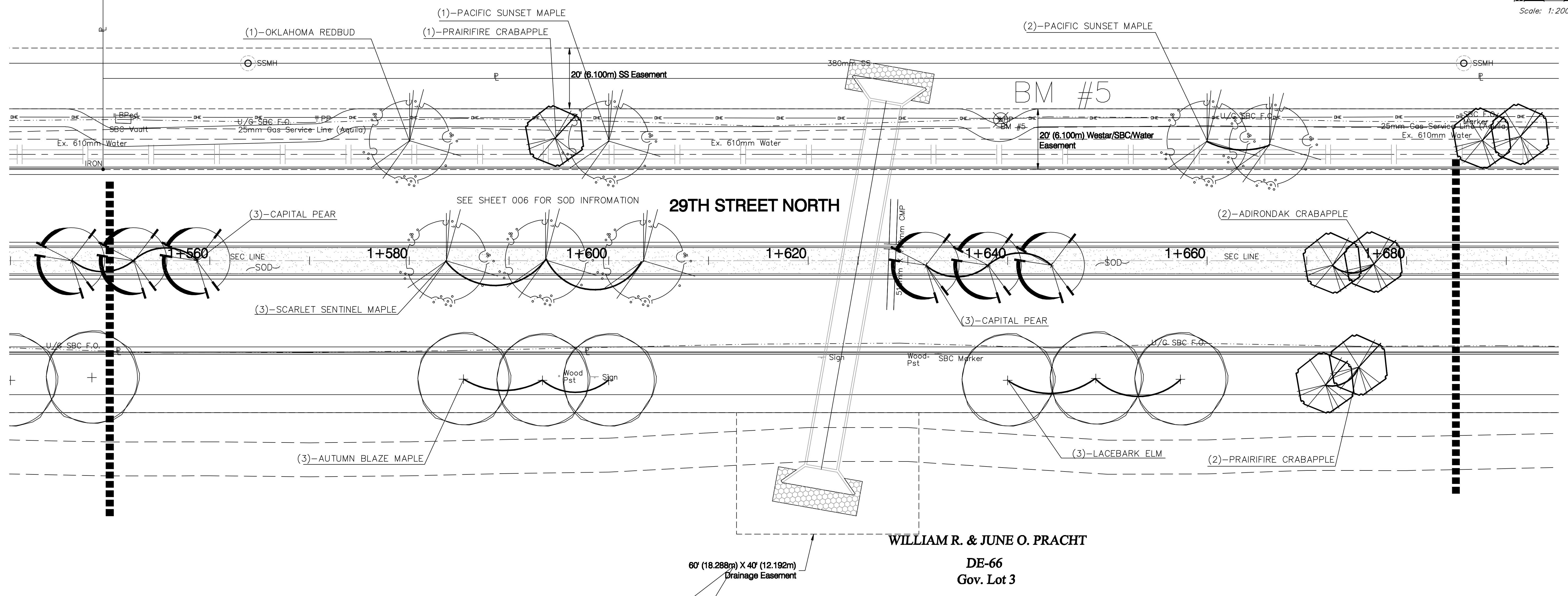


**BENCHMARK:**  
 BM #5 - 80d Spike in the South Face of the 11th Power Pole East (3/8 mile) of Maize Road on the North Side of 29th Street North. Sta. 1+639.15, 14.28m Lt. Elev. 410.880 SI Units (1348.03 MSL)



**FOX RIDGE ADDITION**  
 Reserve G



**PLANT SCHEDULE**

| QTY | BOTANICAL NAME  | COMMON NAME            | SIZE    | CONDITION | REMARKS          |
|-----|---|------------------------|---------|-----------|------------------|
| 3   | <i>Acer fremanii</i> 'Autumn Blaze'                       | Autumn Blaze Maple     | 2" Cal. | B&B       | Single Stem Only |
| 3   | <i>Acer rubrum</i> 'Scarsen'                              | Scarlet Sentinel Maple | 2" Cal. | B&B       | Single Stem Only |
| 3   | <i>Acer truncatum</i> x <i>A. platanoides</i> 'Warrenred' | Pacific Sunset Maple   | 2" Cal. | B&B       | Single Stem Only |
| 1   | <i>Cercis reniformis</i> 'Oklahoma'                       | Oklahoma Redbud        | 2" Cal. | B&B       | Single Stem Only |
| 2   | <i>Malus Adirondak</i> '                                  | Adirondak Crabapple    | 2" Cal. | B&B       | Single Stem Only |
| 3   | <i>Malus Prairifire</i> '                                 | Prairifire Crabapple   | 2" Cal. | B&B       | Single Stem Only |
| 6   | <i>Pyrus calleryana</i> 'Capital'                         | Capital Pear           | 2" Cal. | B&B       | Single Stem Only |
| 3   | <i>Ulmus parvifolia</i>                                   | Lacebark Elm           | 2" Cal. | B&B       | Single Stem Only |