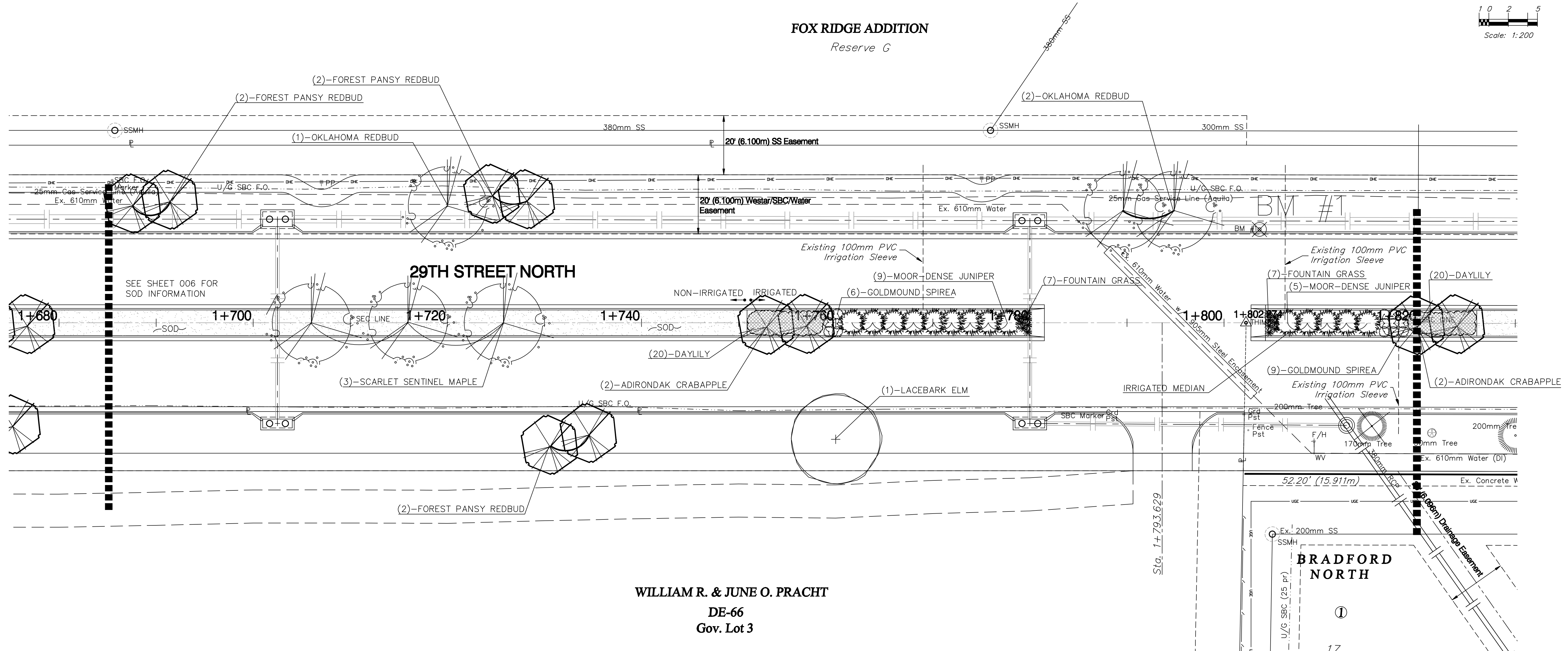
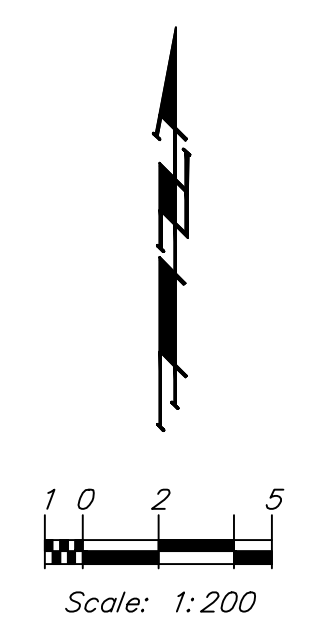


BENCHMARK:
 BM #1 - City of Wichita Disc Located .5 Mile East of
 Maize Road North of 29th Street North.
 Sta. 1+803.63, 9.61m Lt.
 Elev. 410.950 SI Units (1348.26 MSL)



WILLIAM R. & JUNE O. PRACHT
 DE-66
 Gov. Lot 3

PLANT SCHEDULE

| QTY | BOTANICAL NAME | COMMON NAME | SIZE | CONDITION | REMARKS |
|-----|--|----------------------------|---------|-----------|------------------|
| 3 | <i>Acer rubrum</i> 'Scarsen' | Scarlet Sentinel Maple | 2" Cal. | B&B | Single Stem Only |
| 6 | <i>Cercis canadensis</i> 'Forest Pansy' | Forest Pansy Redbud | 2" Cal. | B&B | Single Stem Only |
| 3 | <i>Cercis reniformis</i> 'Oklahoma' | Oklahoma Redbud | 2" Cal. | B&B | Single Stem Only |
| 4 | <i>Malus</i> 'Adirondak' | Adirondak Crabapple | 2" Cal. | B&B | Single Stem Only |
| 1 | <i>Ulmus parvifolia</i> | Lacebark Elm | 2" Cal. | B&B | Single Stem Only |
| 14 | <i>Juniperus sabina</i> 'Monard' | Moar-Dense Juniper | 2-Gal. | Container | Full & Healthy |
| 15 | <i>Spirea japonica</i> 'Goldmound' | Goldmound Spirea | 2-Gal. | Container | Full & Healthy |
| 40 | <i>Hemerocallis</i> 'Stella de Oro' | Stella De Oro Daylily | 1-Gal. | Container | Full & Healthy |
| 14 | <i>Pennisetum alopecuroides</i> 'Hameln' | Dwf. Hameln Fountain Grass | 1-Gal. | Container | Full & Healthy |

| | | | | | | | | | |
|-------------------------------------|--------------|--------------------|------------------|---|---------------------------|---|--|---|--|
| PROJECT NUMBER 472-83863a | | SHEET NAME LS08 | | ENGINEERING DIRECTORY E:\29th - Tyler to Maize\lscape\ | | CAPITAL IMPROVEMENT PROJECT 29TH STREET NORTH PAVING Sta. 1+685.000 to Sta. 1+820.0 | | BAUGHMAN COMPANY, P.A. ENGINEERING, SURVEYING, & PLANNING 316-282-7271 • 315 ELLIS • WICHITA, KANSAS 67211 | SHEET A-8 OF 18 |
| DESIGN NLS | DRAWN NLS | APPROVED BDT | DATE April 07 | SCALE Noted | BAUGHMAN NO 02-02-E232 | | | | |