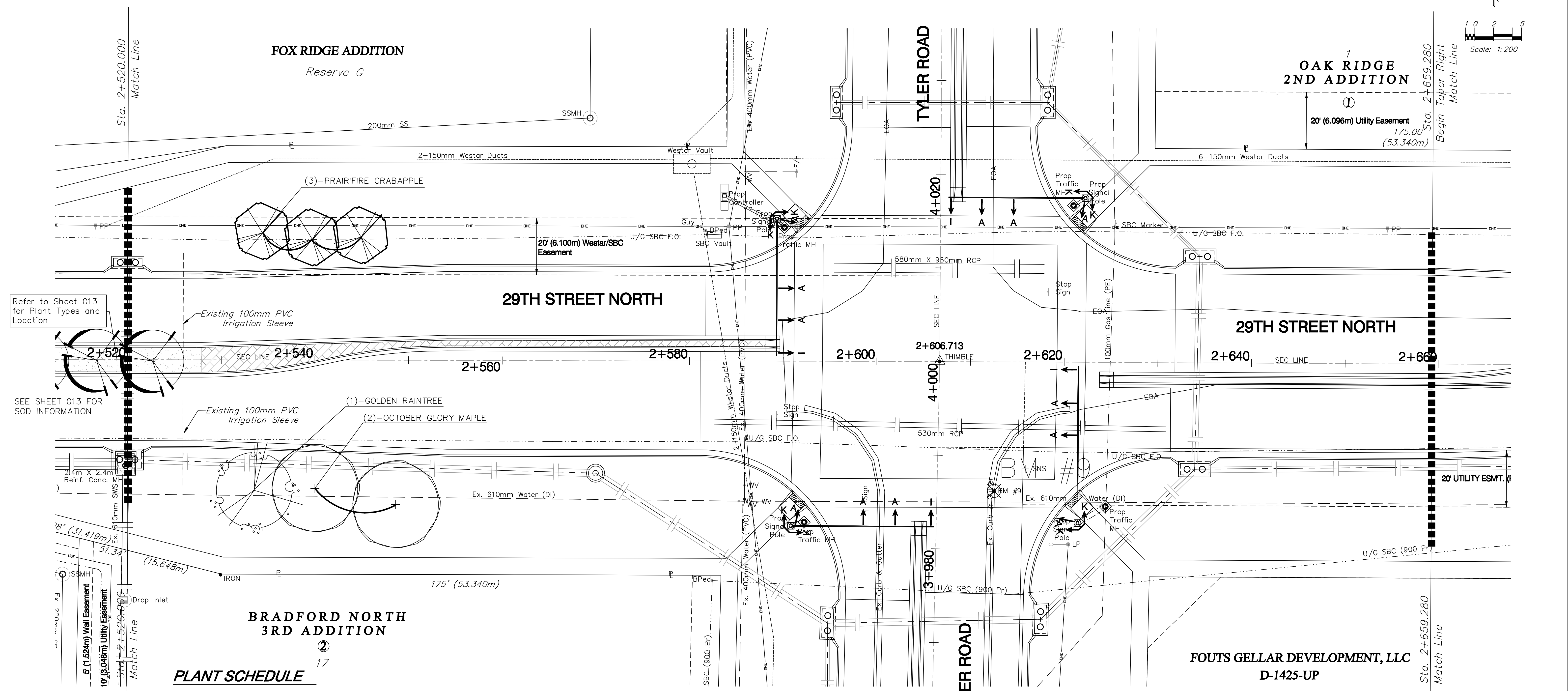
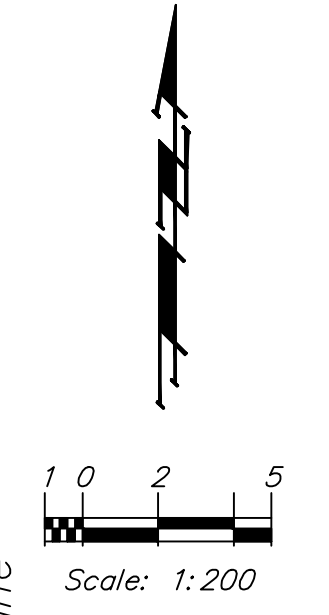


BENCHMARK:
 BM #9 - "□" on the Top of Curb at the South End of the Curb Return at the Southeast Corner of Tyler Road and 29th Street North.
 Sta. 2+612.58, 13.78m Rt.
 Elev. 415.765 SI Units (1364.06 MSL)



BRADFORD NORTH 3RD ADDITION

PLANT SCHEDULE

QTY	BOTANICAL NAME	COMMON NAME	SIZE	CONDITION	REMARKS
2	<i>Acer rubrum</i> 'October Glory'	October Glory Maple	2" Cal.	B&B	Single Stem Only
1	<i>Koeleruteria paniculata</i>	Golden Raintree	2" Cal.	B&B	Single Stem Only
3	<i>Malus</i> 'Prairifire'	Prairifire Crabapple	2" Cal.	B&B	Single Stem Only