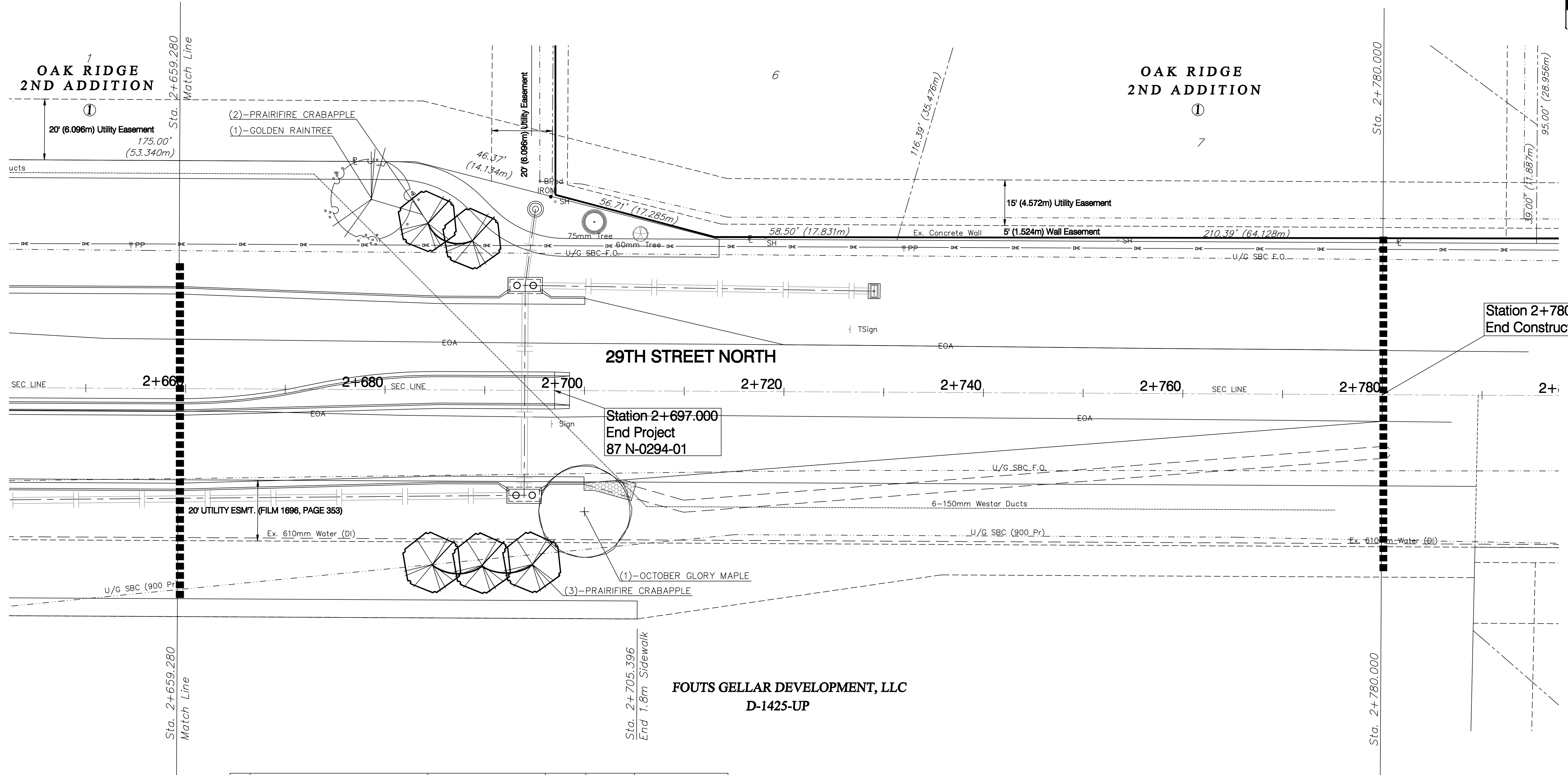
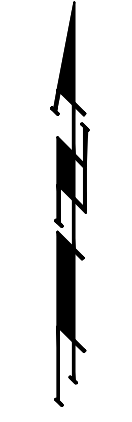
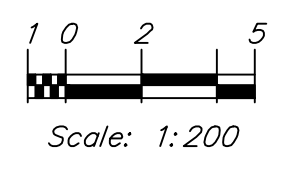


BENCHMARK:
 BM #9 - "□" on the Top of Curb at the South End of the Curb Return at the Southeast Corner of Tyler Road and 29th Street North.
 Sta. 2+612.58, 13.78m Rt.
 Elev. 415.765 SI Units (1364.06 MSL)



QTY	BOTANICAL NAME	COMMON NAME	SIZE	CONDITION	REMARKS
1	<i>Acer rubrum</i> 'October Glory'	October Glory Maple	2" Cal.	B&B	Single Stem Only
1	<i>Koelreuteria paniculata</i>	Golden Raintree	2" Cal.	B&B	Single Stem Only
5	<i>Malus</i> 'Prairifire'	Prairifire Crabapple	2" Cal.	B&B	Single Stem Only

PROJECT NUMBER 472-83863a		SHEET NAME LS15		ENGINEERING DIRECTORY E:\29th - Tyler to Maize\Scope\		CAPITAL IMPROVEMENT PROJECT 29TH STREET NORTH PAVING Sta. 2+659.280 to Sta. 2+780.000 29TH STREET NORTH - MAIZE ROAD to TYLER ROAD		BAUGHMAN COMPANY, P.A. ENGINEERING, SURVEYING, & PLANNING 316-282-7271 • 315 ELLIS • WICHITA, KANSAS 67211	SHEET A.15 OF 18
DESIGN NLS	DRAWN NLS	APPROVED BDT	DATE April 07	SCALE Noted	BAUGHMAN NO 02-02-E232				