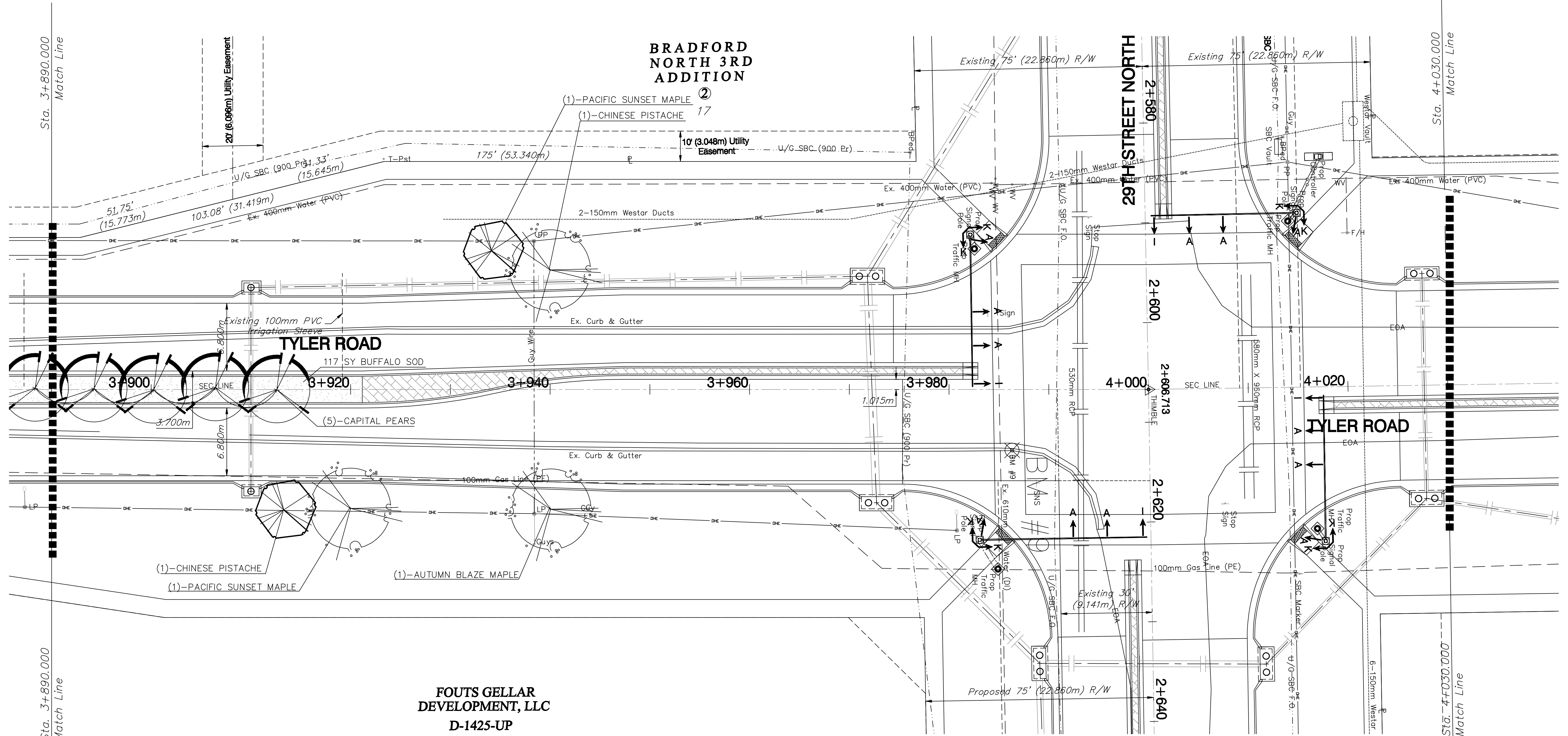
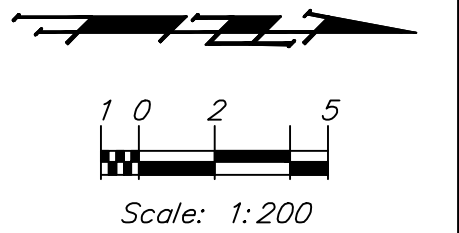


**BENCHMARK:**  
 BM #9 - "□" on the Top of Curb at the South End of the Curb Return at the Southeast Corner of Tyler Road and 29th Street North. Sta. 2+612.58, 13.78m Rt. Elev. 415.765 SI Units (1364.06 MSL)



QTY	BOTANICAL NAME	COMMON NAME	SIZE	CONDITION	REMARKS
1	<i>Acer fremanii</i> 'Autumn Blaze'	Autumn Blaze Maple	2" Cal.	B&B	Single Stem Only
2	<i>Acer truncatum x a. platanoides</i> 'Warrenred'	Pacific Sunset Maple	2" Cal.	B&B	Single Stem Only
2	<i>Pistacia chinensis</i>	Chinese Pistache	2" Cal.	B&B	Single Stem Only
5	<i>Pyrus calleryana</i> 'Capital'	Capital Pear	2" Cal.	B&B	Single Stem Only

**FOUTS GELLAR  
 DEVELOPMENT, LLC  
 D-1425-UP**

PROJECT NUMBER <b>472-83863a</b>		SHEET NAME LS17		ENGINEERING DIRECTORY E: 29th - Tyler to Maize Lscope\		CAPITAL IMPROVEMENT PROJECT TYLER ROAD PAVING Sta. 3+890.000 to Sta. 4+030.000 29TH STREET NORTH - MAIZE ROAD to TYLER ROAD		<b>BAUGHMAN COMPANY, P.C.</b> <b>ENGINEERING, SURVEYING, &amp; PLANNING</b> 316-282-7271 • 315 ELLIS • WICHITA, KANSAS 67211	SHEET <b>A.17</b> OF <b>18</b>
DESIGN NLS	DRAWN NLS	APPROVED BDT	DATE April 07	SCALE Noted	BAUGHMAN NO 02-02-E232				