

**Benchmark:**

60d Nail Located in Power Pole Located South Side Hoover Court.  
Elev. = 111.85 City Datum

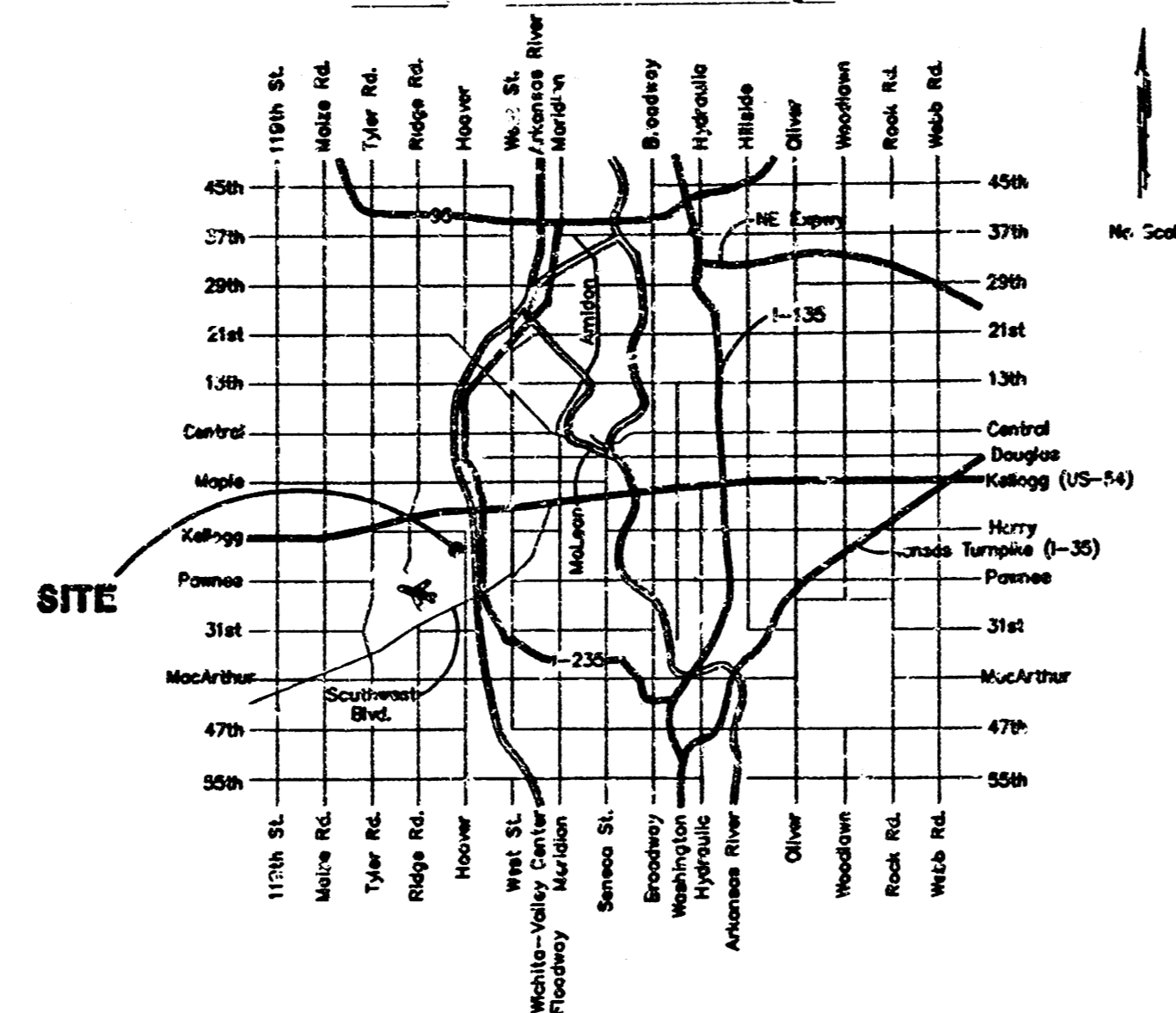
**Legal Description**

Lots 8, Airport Industrial Park, Wichita, Sedgwick County, Kansas.

**Index**

Cover Sheet	1
Plan/Profile Sheet	2
Manhole Details	3
Lid & Rim Details	4
Copy Of Plot	5

**Location Map**



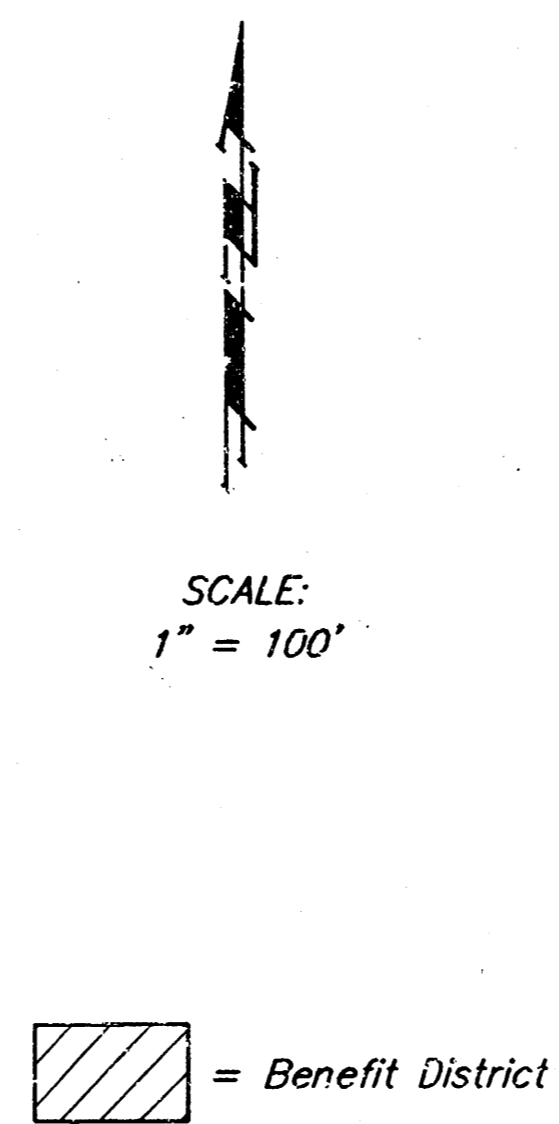
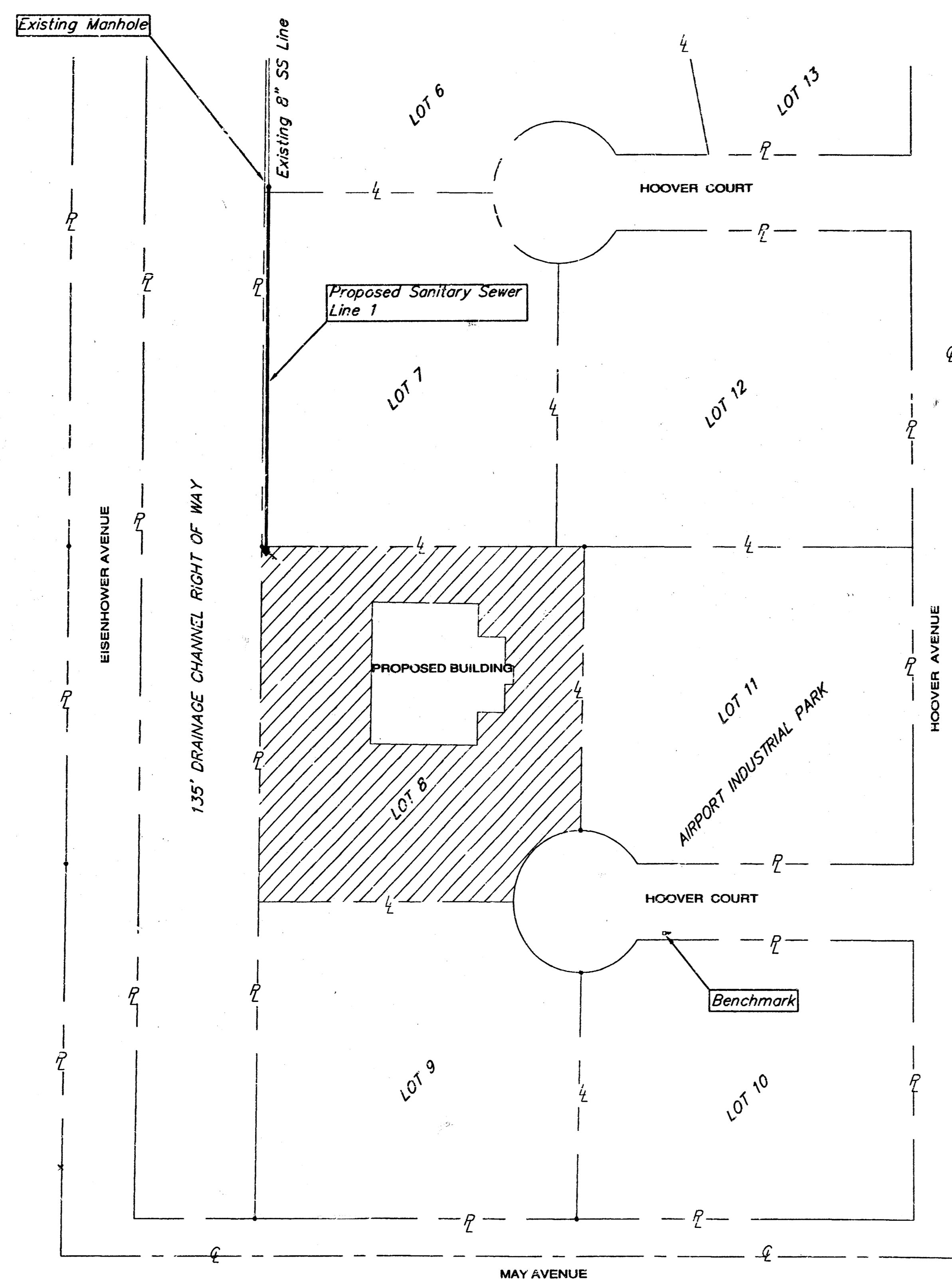
**SANITARY SEWER EXTENSION**  
**Lateral 446, Southwest Interceptor Sewer**  
**AIRPORT INDUSTRIAL PARK**

LOT 8

**Project Number 468-83080**

**OCA Number 743836**

**CITY OF WICHITA, KANSAS**  
**Michael E. Lindebak, P.E. City Engineer**  
**April 2000**

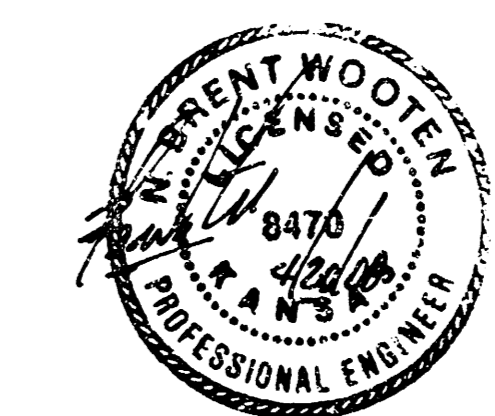


**General Notes:**

- Contractor will be required to provide notice to utility companies a minimum of forty-eight (48) hours prior to any excavation, as follows:  

Kansas One-Call	687-2470
The Contractor must notify the following in case of an emergency:	
Cox Communications	262-4270
Kansas Gas Service	383-8600
KGE	383-8650
Peoples Gas Company	942-8811
Southwestern Bell Telephone Company	1-571-2611
City of Wichita Water Department	268-4908
City of Wichita Sewer Maintenance	268-4071
- Utility service lines, poles, valve boxes, meters, et cetera are to be adjusted as necessary by others prior to construction unless the plans specifically call for their adjustment by the Contractor or unless the plans specifically identify a utility to be adjusted by its owner during construction. Existing utilities and their location, as shown on the plans represent the best information obtainable for design and shall be field verified. The contractor will be required to work around existing utilities within the right-of-way which do not conflict with proposed construction.
- Contractor shall not start work on the project until the Project Inspector is assigned to the project and is present on the site. Any work done without inspection will be required to be uncovered for inspection.
- All areas disturbed by construction operations shall be seeded with rye grass at a rate of 6 lbs. per 1000 sq. feet or as per city specs. Contractor to prepare ground to city specifications.
- Trees and shrubs which are in direct conflict with proposed new construction shall be removed by the contractor with the Engineer's approval. Trees and shrubs which are not in direct conflict with proposed new construction shall be saved and protected from damage.
- The Contractor shall be responsible for maintaining continuous flow of sewage through construction. Contractor's proposed method for maintaining sewage flow shall be approved by the Engineer. Cost of maintaining flow of sewage through construction will not be paid for directly and this cost shall be considered as subsidiary to the other pay items of work.
- Rubble from the removal of miscellaneous structures and excess excavation which is to be wasted shall be disposed of on sites to be provided by the Contractor. These sites shall be approved by the Engineer as to suitability, appearance and site location. Locations that, in the opinion of the Engineer, will leave an unsightly appearance will not be approved. All disposal sites must be approved by the Kansas Department of Health and Environment. Material either stockpiled or disposed of in a flood plain would require a Kansas State Board of Agriculture permit. Any material dumped in waters of the United States or wetlands is subject to U.S. Corps. of Engineers permitting regulations. Any material buried or stockpiled beyond approved construction limits would require additional archaeological investigations unless buried in a previously approved borrow location.

Booked  
P-132  
7-5-00  
R. P. L.



**BAUGHMAN COMPANY P. A.**  
ENGINEERING, SURVEYING & PLANNING  
316-282-7271 • 316-282-7272 • WICHITA, KANSAS 67211

**LEGAL DESCRIPTION:**

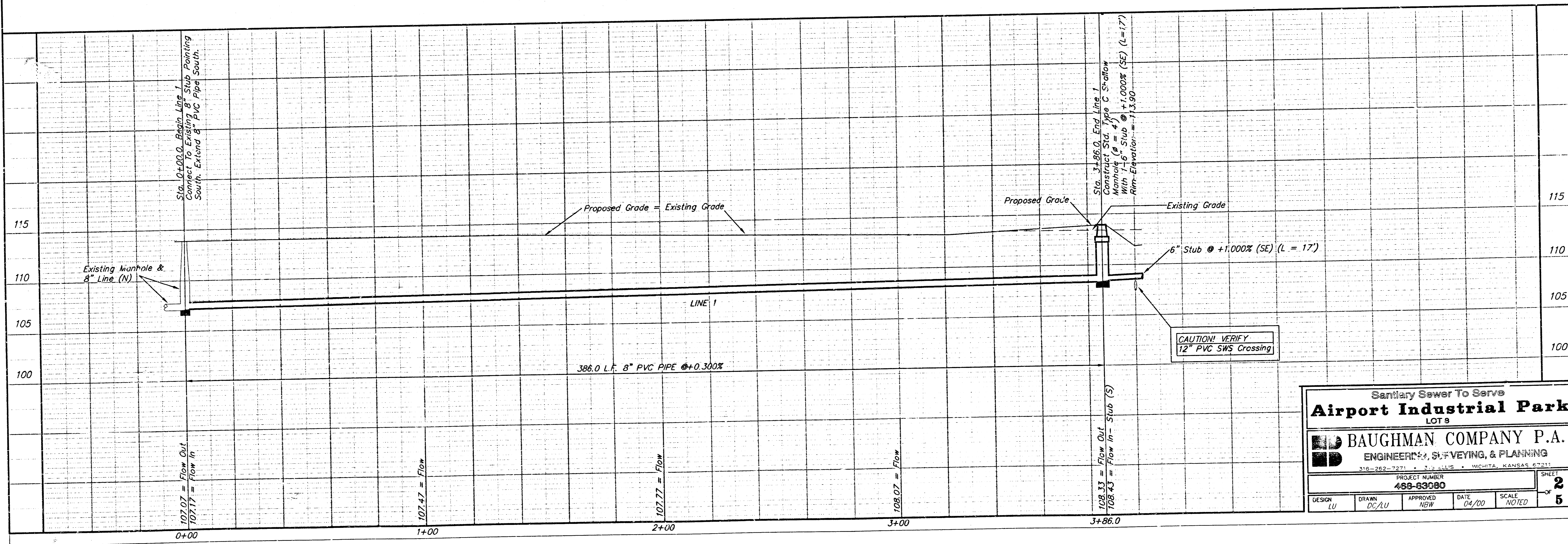
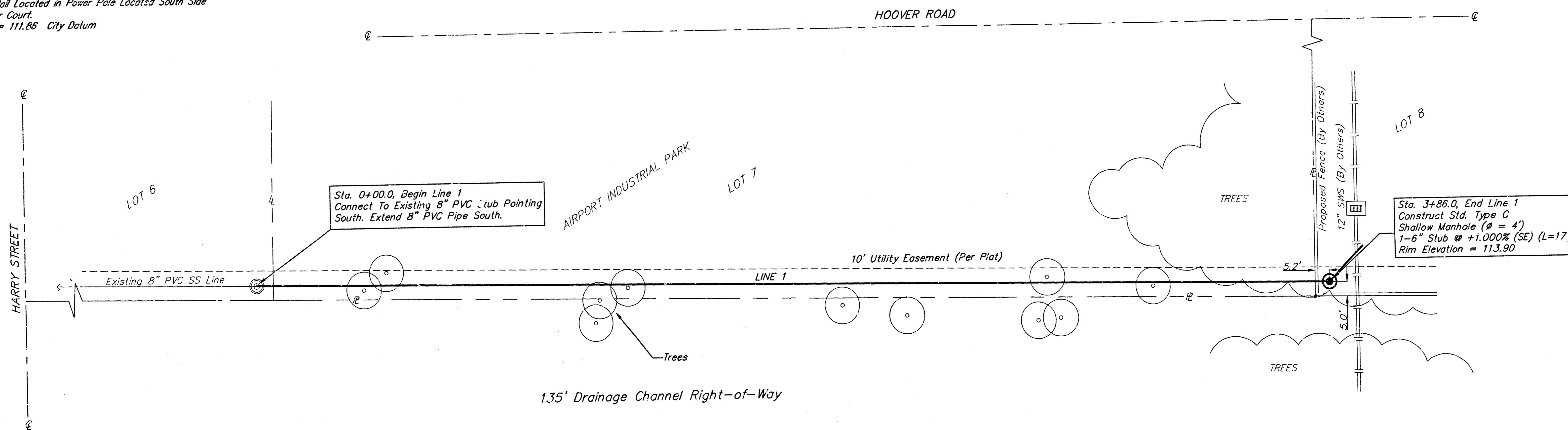
Lot 8, Airport Industrial Park, Wichita, Sedgwick County, Kansas.

**BENCHMARK:**

60d Nail Located in Power Pole Located South Side Hoover Court  
Elev. = 111.85 City Datum



SCALE:  
1" = 20' HORIZONTAL  
1" = 5' VERTICAL



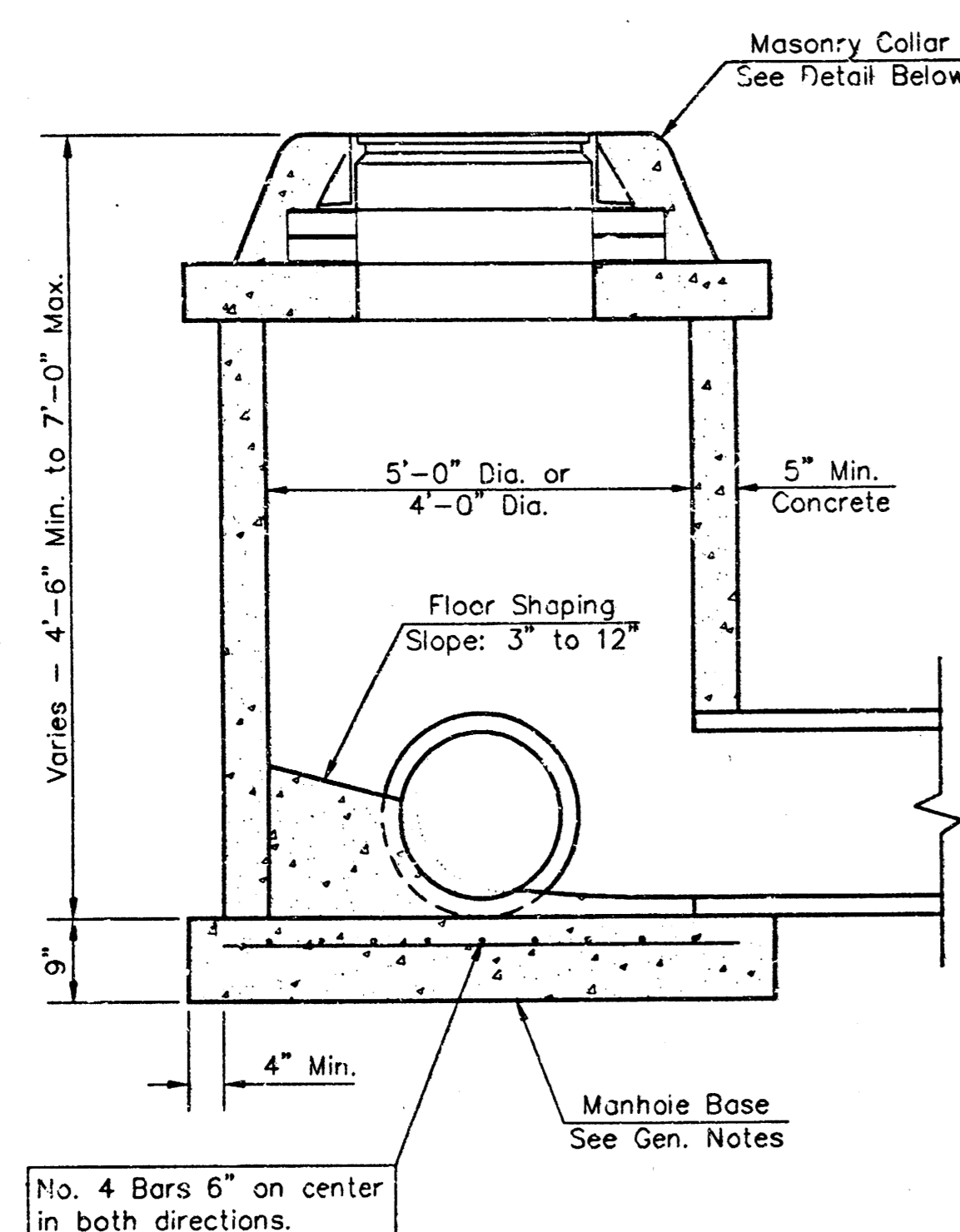
Sanitary Sewer To Serve  
**Airport Industrial Park**  
LOT 8

**BAUGHMAN COMPANY P.A.**  
ENGINEERS, SURVEYING, & PLANNING  
318-262-7271 • 318-262-7272 • WICHITA, KANSAS 67211

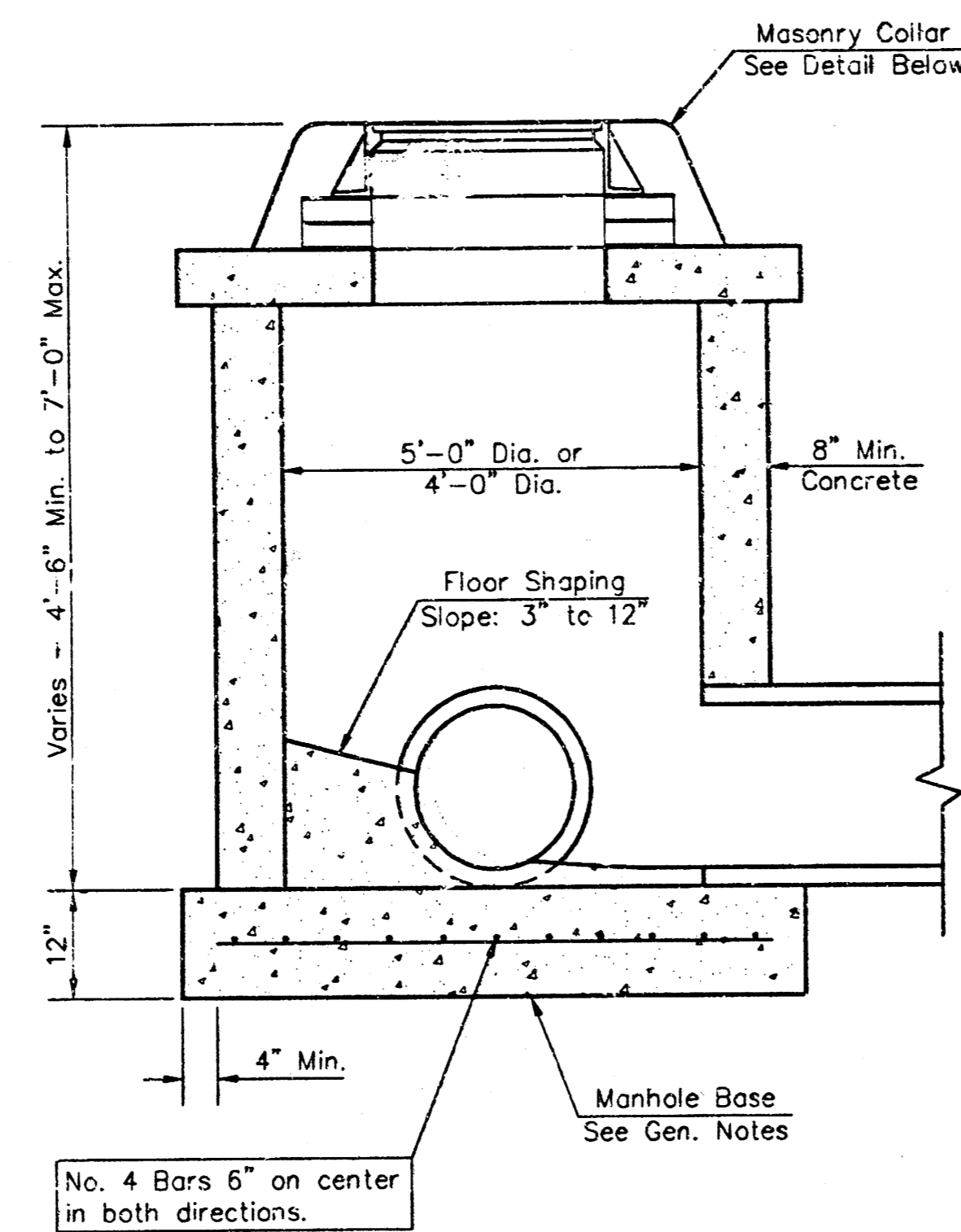
PROJECT NUMBER  
**488-83080**

DESIGN LU	DRAWN DC/AU	APPROVED NGW	DATE 04/00	SCALE NOTED
--------------	----------------	-----------------	---------------	----------------

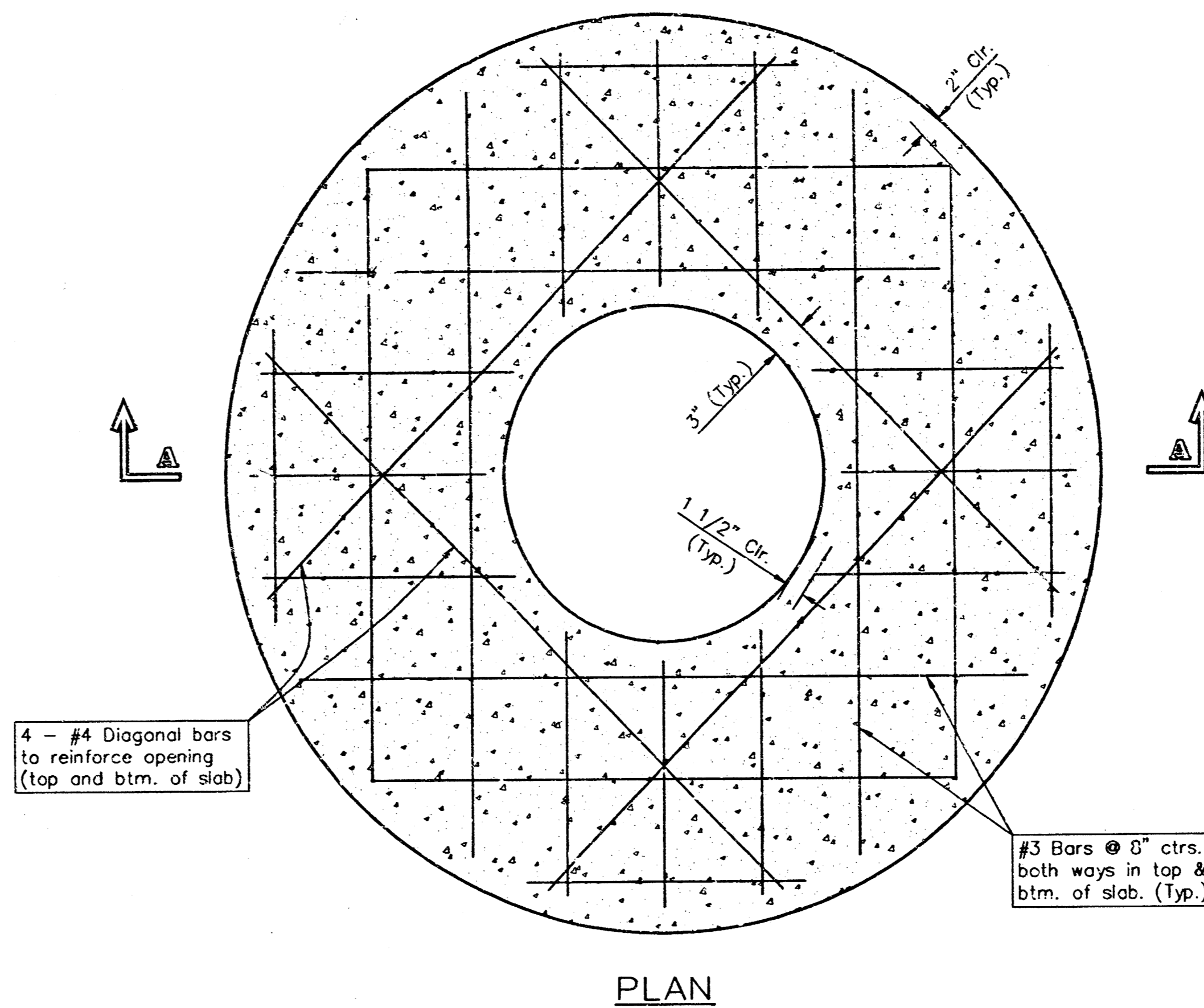
SHEET  
**2**  
OF  
**5**



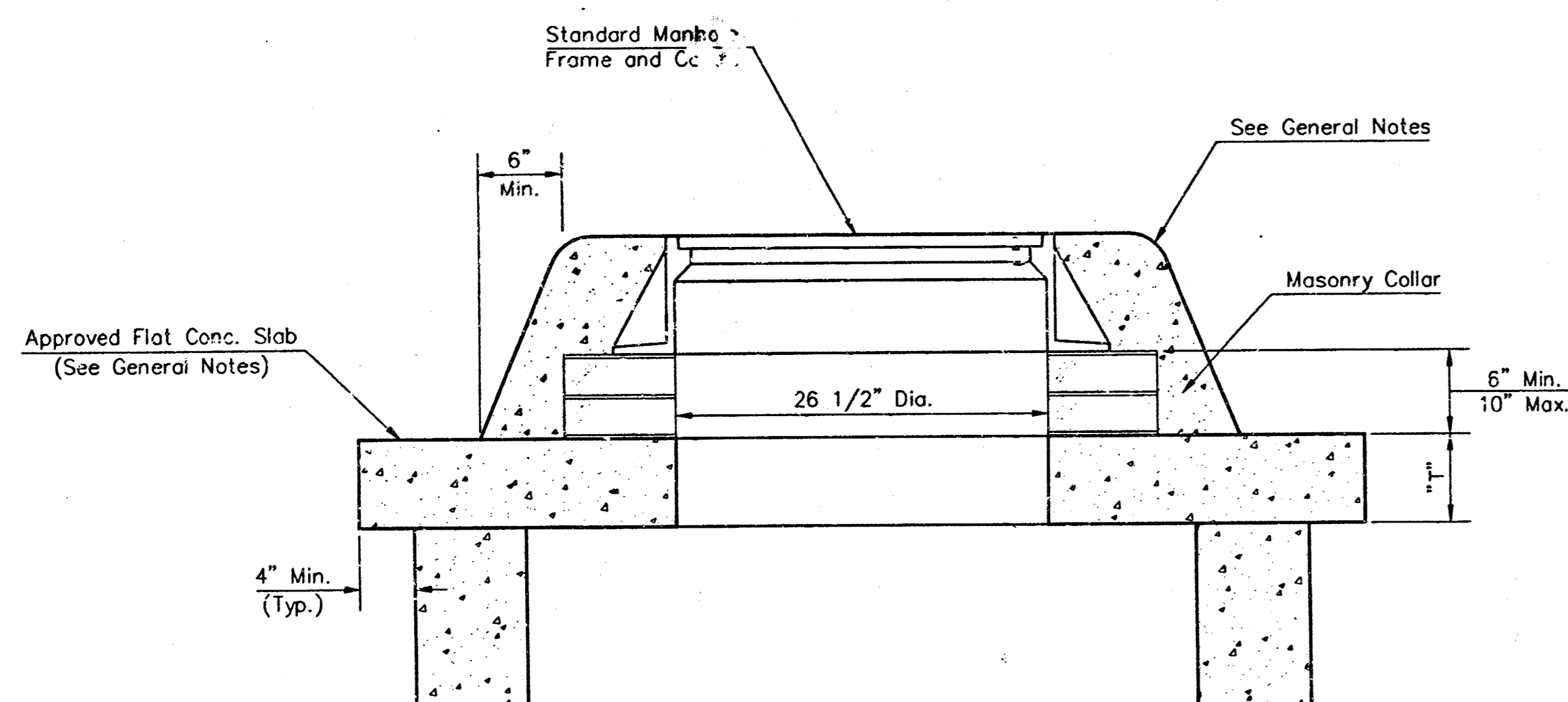
SHALLOW TYPE "P" MANHOLE



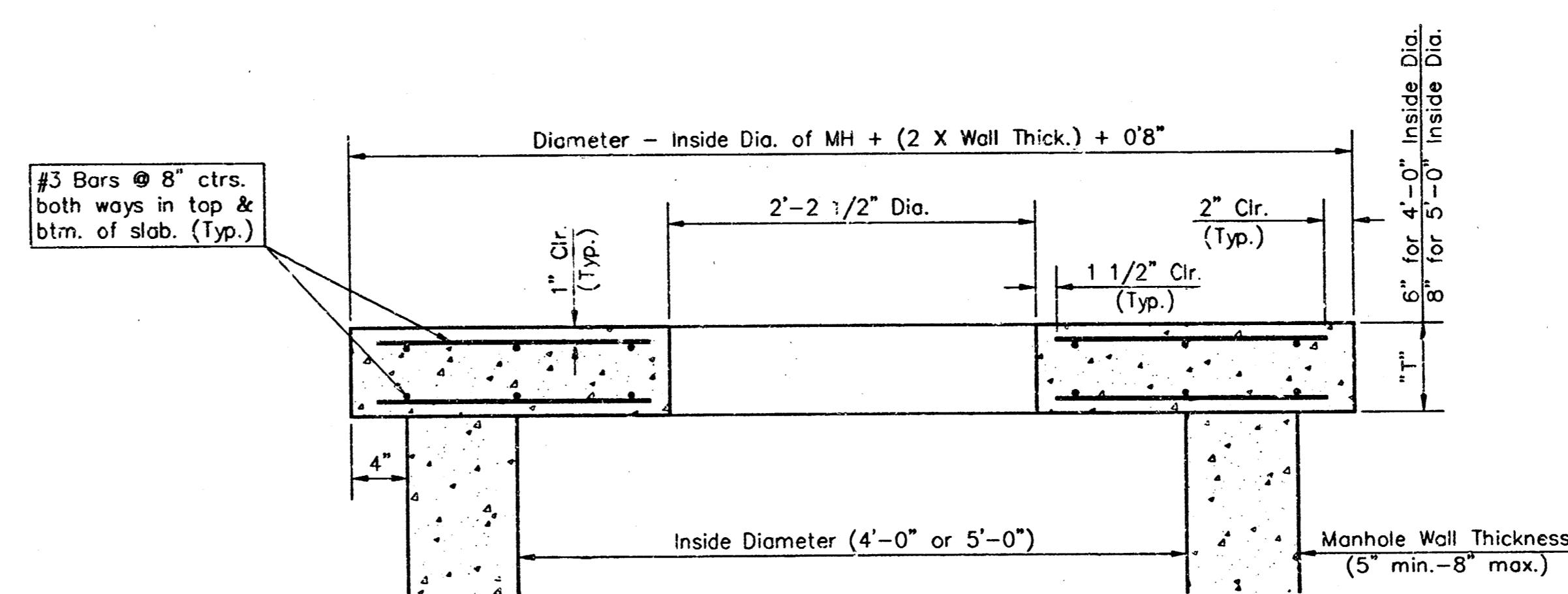
SHALLOW TYPE "C" MANHOLE



PLAN




MASONRY COLLAR DETAIL



SECTION A-A  
FLAT CONCRETE SLAB DETAILS

GENERAL NOTES

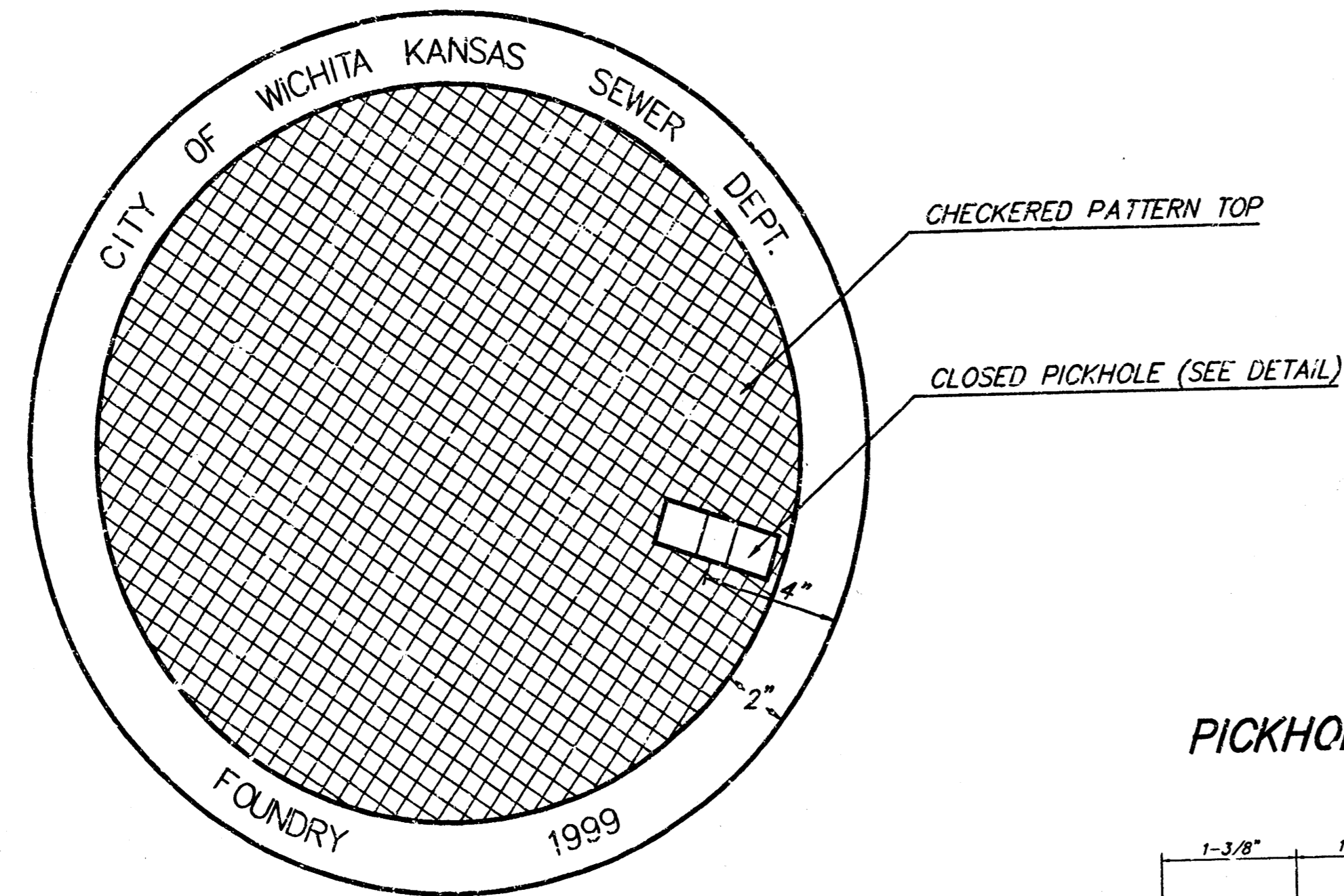
- Mortar used in masonry construction shall contain 8 sacks of cement per cubic yard. Concrete used in manhole bases shall conform to the requirements of concrete for concrete pavement construction as specified in the city standard paving specifications using city concrete cement mix without air-entraining admixture. Mortar shall be placed around the manhole ring as shown on the drawings when manholes are constructed in unpaved areas. Manholes constructed where pipe sizes are smaller than 24" shall have an inside diameter of 4". Manholes constructed where pipe sizes are 24" or larger shall have an inside diameter of 5". Completed manhole shall be without leaks and water tight.
- Reinforcing steel shall be installed in the manhole bases and shall consist of no. 4 bars placed on 6" centers in both directions. The manhole base reinforcement shall be placed 6" above the bottom of the manhole base. All costs for furnishing and installing reinforcing steel shall be included in the unit price bid for the manhole.
- The floors of all manholes shall be shaped with flow channels such that the manholes will be self cleaning and free of areas where solids could be deposited as sewage flows through the manhole from all inlet pipes to the outlet pipe. Flow channels shall be formed to match the bottom slopes of the inflowing pipes and the outflowing pipe as shown by the drawings. Manhole floors shall have slopes of 3 inches per foot in the areas outside of the flow channels sloped toward the flow channels. Pipes laid through manholes shall have the top half removed to neat lines for the full inside diameter of the manhole. Manhole floors shall then be shaped around the bottom half of the pipe which forms the flow channel.
- Pipes installed within the excavation made for the manhole shall be cradled with concrete to the limits of the manhole excavation. When clay pipe is used, the cradle shall extend to the first joint outside the manhole. The cradle shall be terminated at the clay pipe joint in a manner which will maintain the flexibility of the joint. Cost of cradle within manhole excavation or to clay pipe joints adjacent to manhole shall be included in the unit price bid for the manhole.
- Manhole cover castings and manhole frame castings shall conform to the requirements as indicated in the standard specifications and as shown in the standard detail drawings.
- The crowns of inflowing pipes shall never be set lower than the crown of the outflowing pipe.
- Standard shallow manholes type "P" and "C" shall be paid for at the unit price bid per each for the type and diameter indicated. All standard shallow manhole diameters will be 4' unless indicated otherwise.
- All brick used in manhole construction shall meet Grade SW of ASTM C852 or C62-87.

CITY OF WICHITA, KANSAS	
STANDARD SHALLOW MANHOLES	
TYPE "P" AND TYPE "C"	
PROJECT NUMBER 468-83080	SHEET / OF 3 / 5
 BAUGHMAN COMPANY P. A. ENGINEERING & SURVEYING 316/262-7271 • 315 ELLIS • WICHITA, KANSAS 67211	

# MANHOLE FRAME AND COVER DETAIL

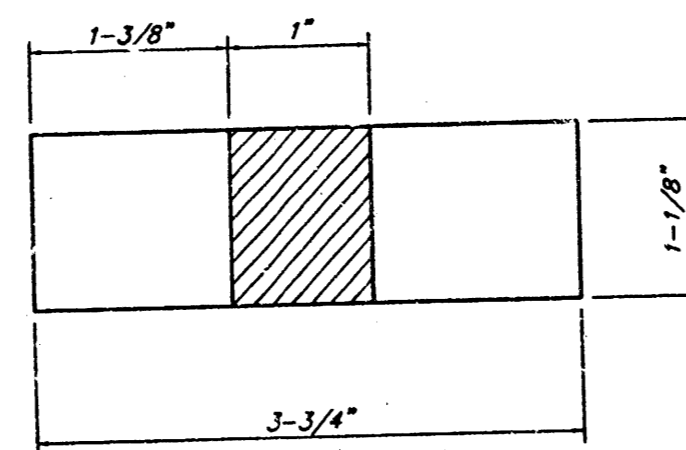
ADOPTED AS STANDARD DESIGN BY  
CITY OF WICHITA, KANSAS

**MANHOLE COVER**  
Weight = 180 Lbs.

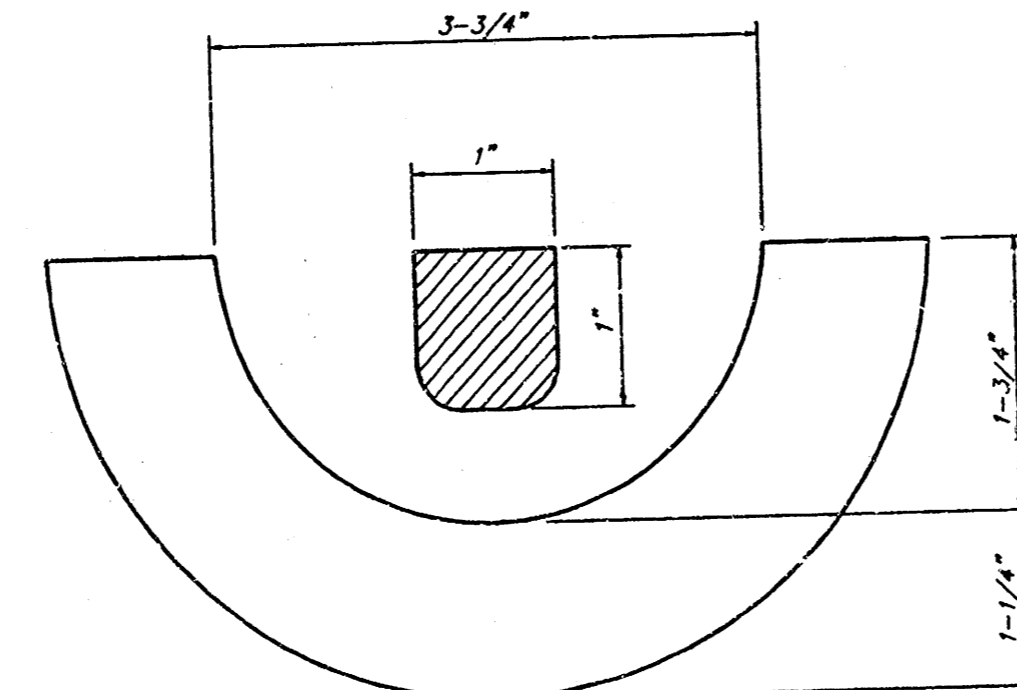


TOP VIEW

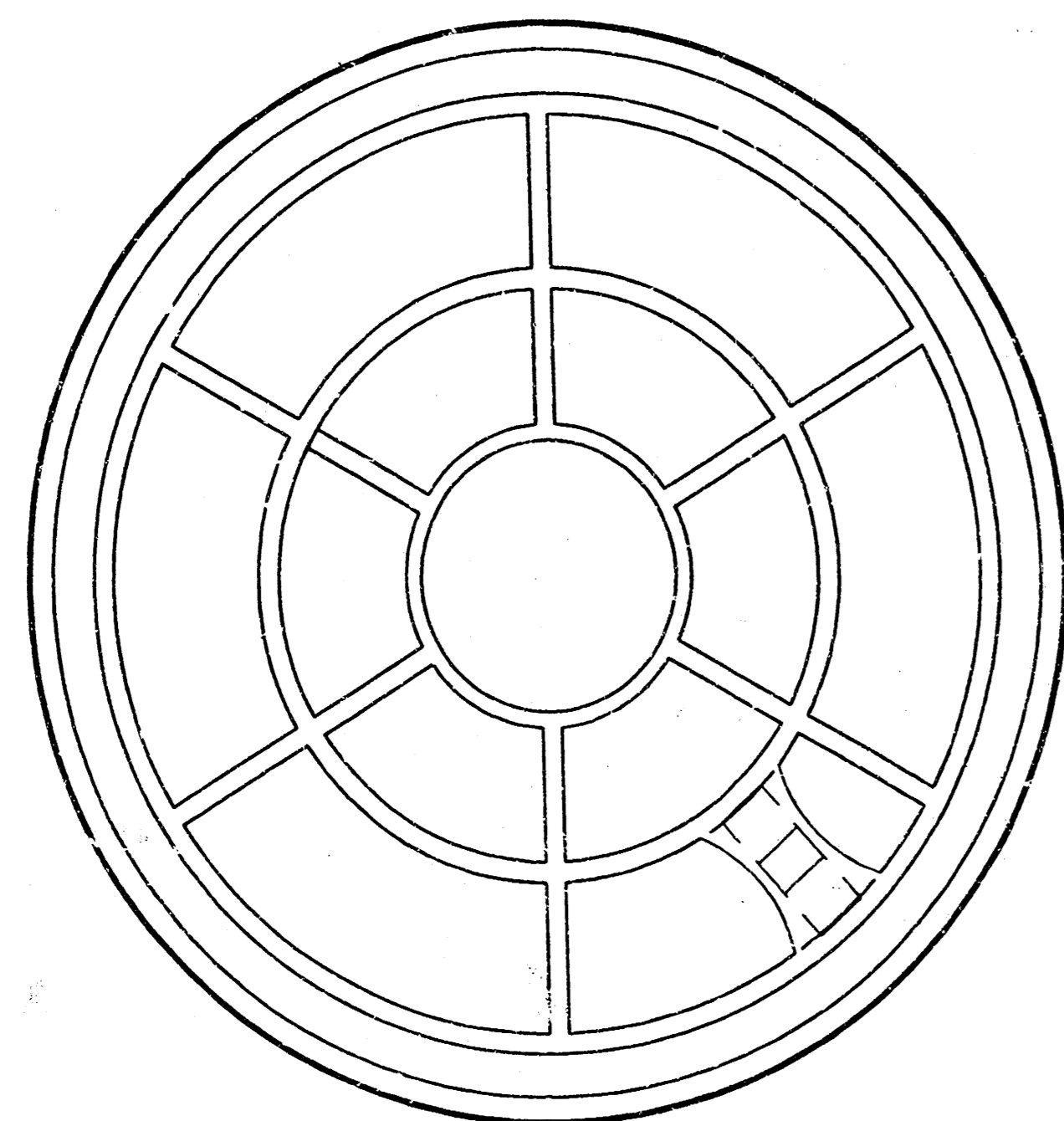
PICKHOLE DETAIL



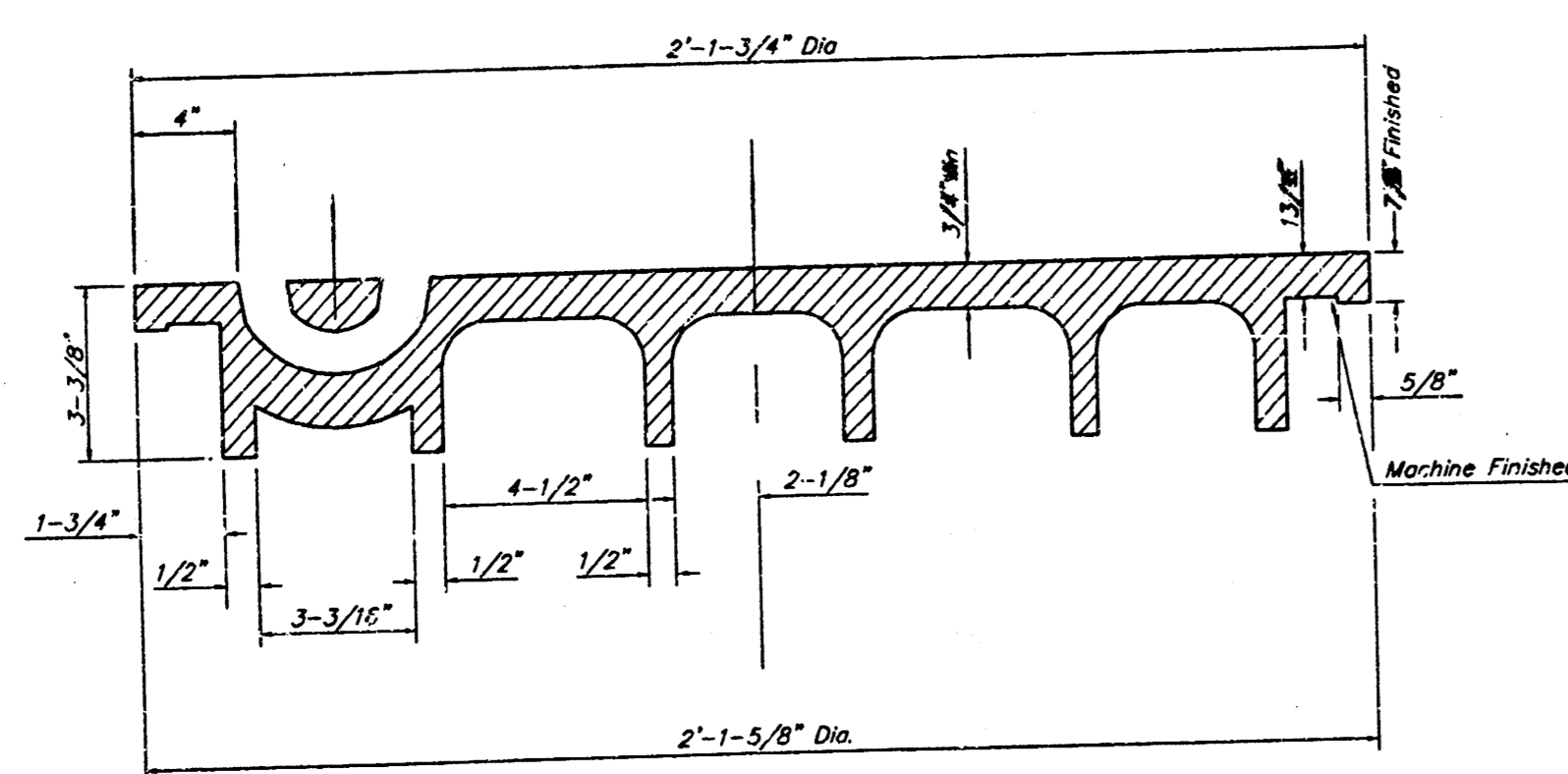
TOP VIEW



SECTION VIEW

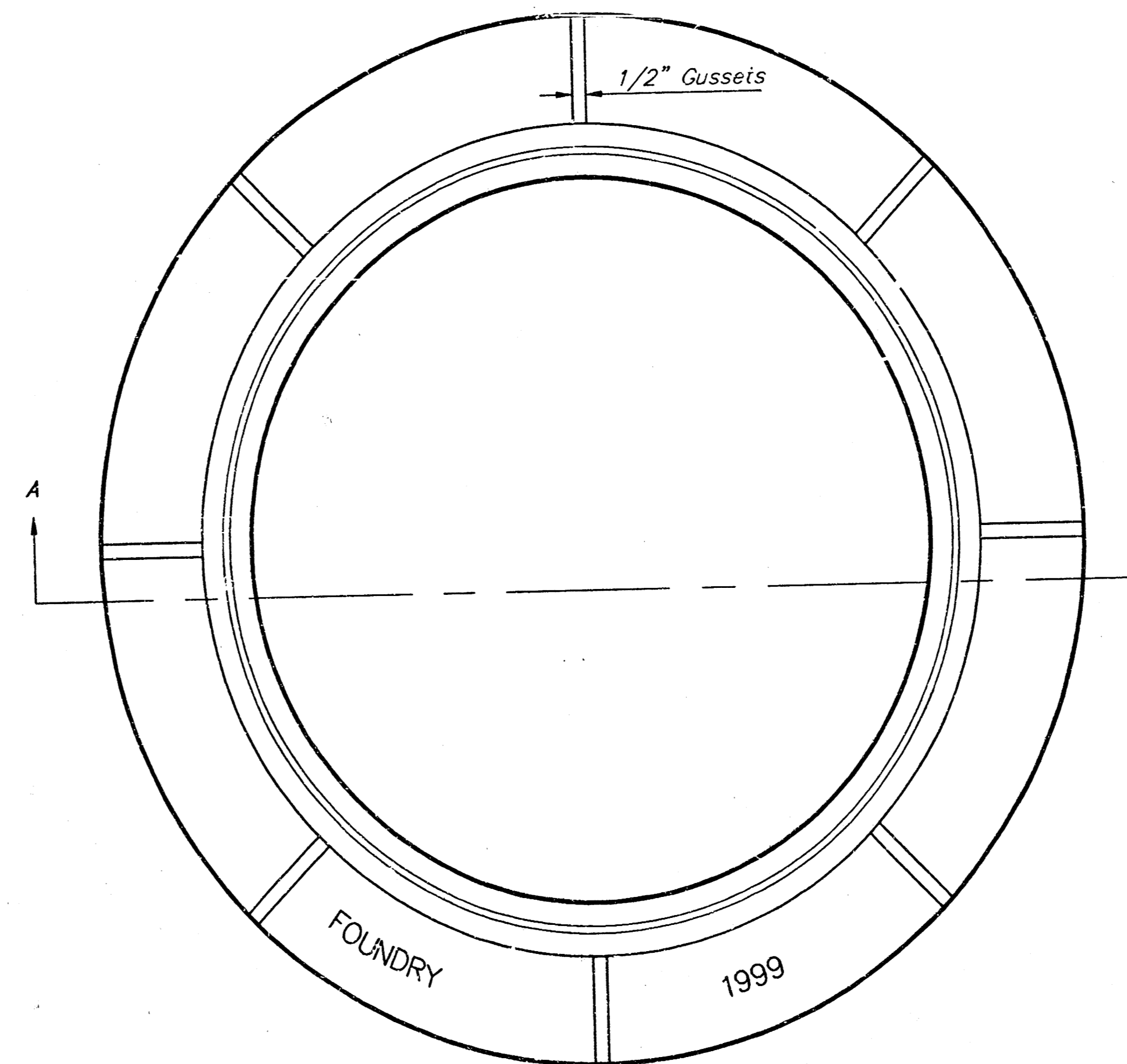


BOTTOM VIEW

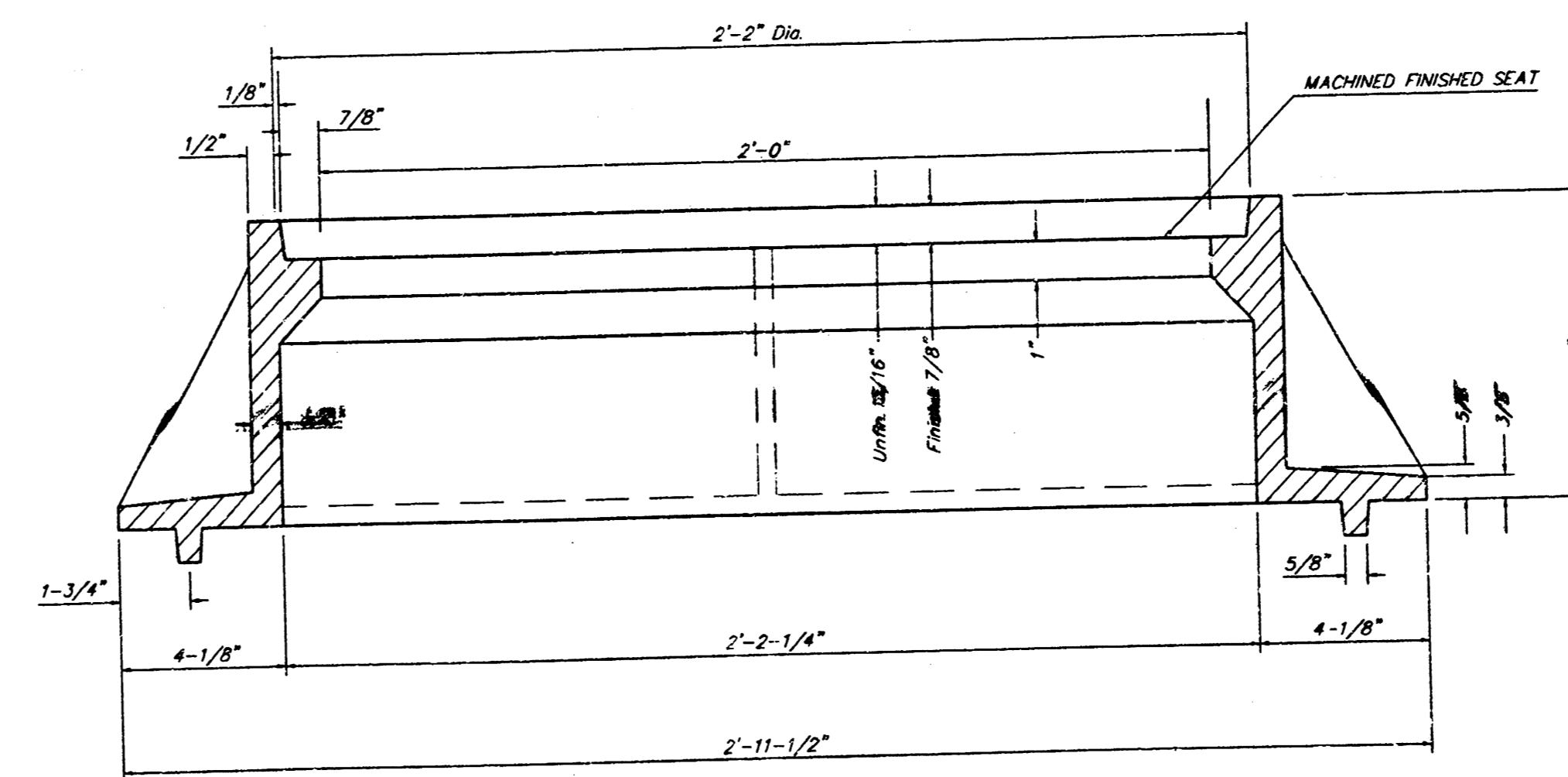


SECTION VIEW

**MANHOLE FRAME**  
Weight = 145 Lbs.



TOP VIEW



SECTION A-A

## GENERAL NOTES

MANHOLE CASTINGS SHALL BE MANUFACTURED USING GOOD QUALITY GRAY IRON CONFORMING TO CLASS 30 OF A.S.T.M. DESIGNATION A-48. DIMENSIONS AND WEIGHTS SHOWN ON THE DETAILED DRAWINGS SHALL BE CONSIDERED AS MINIMUM REQUIREMENTS AND ANY DEVIATIONS FROM THE DIMENSIONS SHOWN MUST BE SPECIFICALLY APPROVED. THE FINISHED CASTINGS SHALL BE OF UNIFORM QUALITY, FREE FROM BLOWHOLES, POROSITY, HARD SPOTS, SHRINKAGE DISTORTIONS OR OTHER DEFECTS.

MANHOLE CASTINGS SHALL BE COATED WITH AN ASPHALT PAINT RESULTING IN A SMOOTH, TOUGH AND TENACIOUS COATING WHICH IS NOT BRITTLE OR TACKY.

MANHOLE CASTINGS SHALL BE MANUFACTURED SUCH THAT A COVER MANUFACTURED BY ANY ONE FOUNDRY WILL FIT INTERCHANGEABLY INTO A FRAME MANUFACTURED BY ANOTHER FOUNDRY AND STILL MEET ALLOWABLE CLEARANCES AND NON-ROCKING REQUIREMENTS. THIS WILL REQUIRE MANUFACTURING OF THE MATCHING FACES ON THE COVER AND THE FRAME TO CLOSE TOLERANCES.

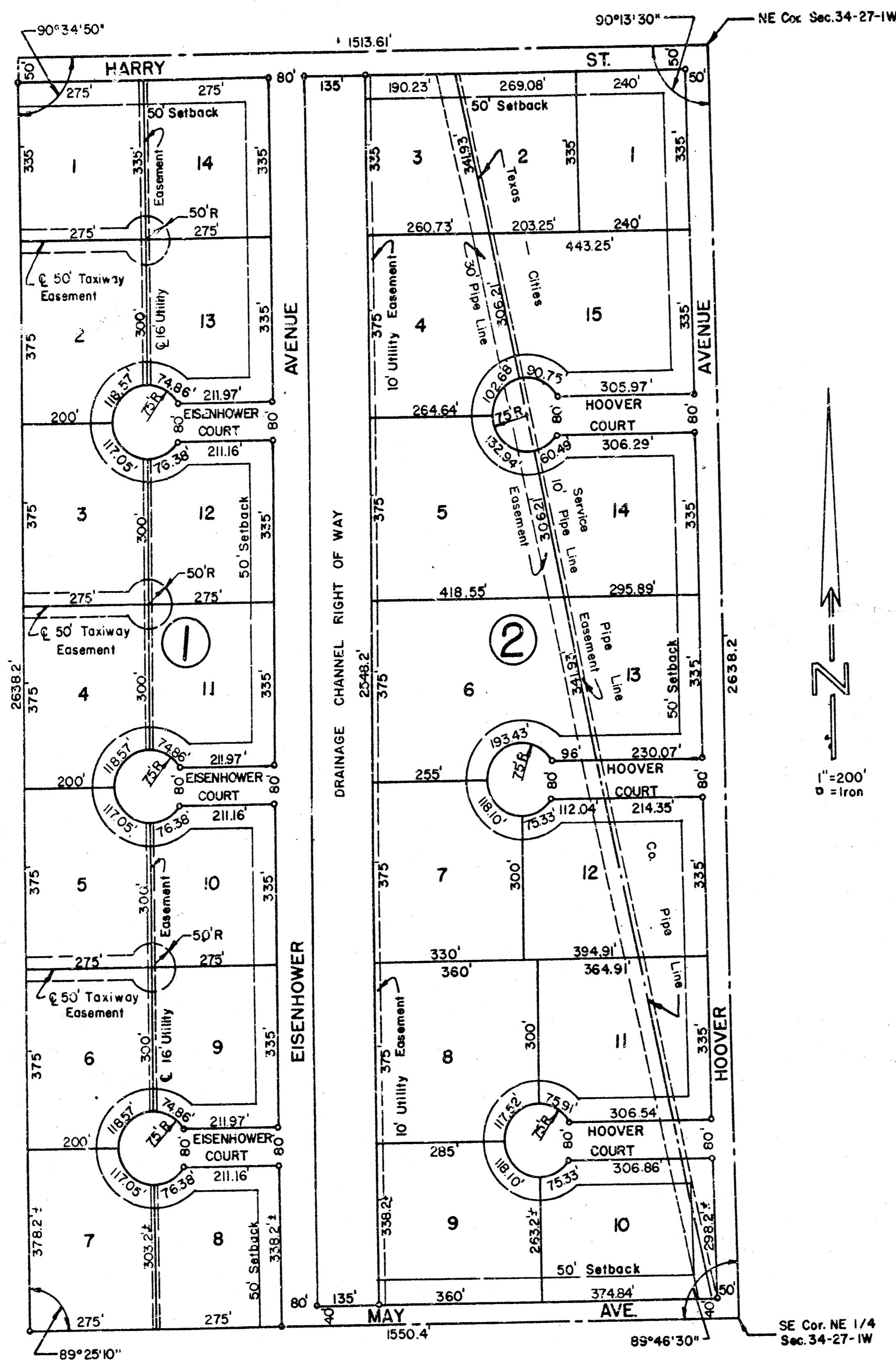
THE OUTSIDE CIRCUMFERENCE OF THE VERTICAL FACE OF THE COVER AND THE INSIDE CIRCUMFERENCE OF THE VERTICAL FACE IN THE FRAME RECESS SHALL BE MANUFACTURED TO TOLERANCES SUCH THAT THE CLEARANCE BETWEEN THE COVER AND FRAME WILL NOT EXCEED 1/8" AT ANY POINT AROUND THE CIRCUMFERENCE OF THE COVER. THE SEATING SURFACES BETWEEN THE COVER AND FRAME SHALL BE MACHINED SUCH AS THESE SURFACES SHALL MAKE FULL CONTACT FOR THEIR FULL CIRCUMFERENCE TO PRECLUDE THE COVER FROM ROCKING IN THE FRAME.

THE MANHOLE FRAME AND COVER SHALL BE MARKED WITH LETTERING INDICATING THE NAME OF THE MANUFACTURER AND THE YEAR WHEN THE COVER OR FRAME WAS CAST. THE COVER SHALL BE FURTHER IDENTIFIED WITH REGARDS TO OWNERSHIP USING LETTERS AT LEAST 1 INCH IN HEIGHT. THIS IDENTIFICATION SHALL BE "CITY OF WICHITA SEWER DEPARTMENT". THE WORD DEPARTMENT MAY BE ABBREVIATED. THE TEXTURE OF THE TOP SURFACE OF THE COVER SHALL BE MANUFACTURED IN A CHECKERED PATTERN DESIGN AS INDICATED ON THE DRAWINGS. SMOOTH BLOCKOUTS SHALL BE UTILIZED TO HIGHLIGHT THE LETTERING ON THE COVER SURFACE. THE TOTAL AREA OF SMOOTH SURFACE BLOCKOUT SHALL NOT EXCEED THE AREA AS INDICATED ON THE DRAWING. POSITIONING OF SMOOTH BLOCKOUTS AND LETTERING MAY VARY FROM THAT SHOWN ON THE DETAILED DRAWING.

MANHOLE FRAME AND COVER DETAIL			
ADOPTED AS STANDARD DESIGN BY CITY OF WICHITA, KANSAS			
BAUGHMAN COMPANY P.A.			
ENGINEERING, SURVEYING, & PLANNING			
316-262-7271 • 315 ELLIS • WICHITA, KANSAS 67211			
PROJECT NUMBER 488-83080		SHEET 4 OF 5	
DESIGN STAFF	DRAWN STAFF	APPROVED NBW	DATE 04/00
		SCALE NONE	

# AIRPORT INDUSTRIAL PARK

WICHITA, SEDGWICK COUNTY, KANSAS



Approved by the Board of City Commissioners this 10<sup>th</sup> day of November, 1962.

Edward J. Boyert, Mayor  
Robert G. Smith, City Clerk

STATE OF KANSAS )  
 COUNTY OF SEDGWICK ) SS

I, Kenneth O. Taylor, Civil Engineer in said county and state, do hereby certify that I have surveyed and platted "AIRPORT INDUSTRIAL PARK", Wichita, Sedgwick County, Kansas:

The east 92 acres of the NE $\frac{1}{4}$  of Section 34, T27S, R1W of the 6th P.M., also described as the NE $\frac{1}{4}$  of Section 34, T27S, R1W of the 6th P.M., except the west 1122.83 feet thereof.

K.O. Taylor, Civil Engineer

Know all men by these presents that we, Dale Frey and Betty Frey, husband and wife, have caused the land described in the Civil Engineer's Certificate to be platted into lots, blocks and streets to be known as "AIRPORT INDUSTRIAL PARK", Wichita, Sedgwick County, Kansas. Utility easements are hereby granted as indicated on the plat for the construction and maintenance of all public utilities. The streets are hereby dedicated to and for the use of the public. The drainage channel right of way as indicated on the plat is hereby dedicated to the public for drainage purposes.

Dale Frey      Betty Frey

STATE OF KANSAS )  
 COUNTY OF SEDGWICK ) SS

Be it remembered that on this 29<sup>th</sup> day of October, 1964, before me, a Notary Public in and for said county and state, came Dale Frey and Betty Frey, husband and wife, to me personally known to be the same persons who executed the foregoing instrument of writing and duly acknowledged the execution of same. In testimony whereof, I have hereunto set my hand and affixed my notarial seal the day and year above written.

Calvin Sandlin, Notary Public  
 My Commission expires November 28, 1964.

Know all men by these presents that Haysville State Bank, a corporation, mortgagee of the property described in the Civil Engineer's Certificate does hereby consent to the platting of "AIRPORT INDUSTRIAL PARK", Wichita, Sedgwick County, Kansas.

HAYSVILLE STATE BANK  
George Stearns  
 Executive Vice President and Cashier

ATTORNEY:  
John W. Throckmorton, Jr.

STATE OF KANSAS )  
 COUNTY OF SEDGWICK ) SS

Be it remembered, that on this 2<sup>nd</sup> day of NOVEMBER, A.D., 1964, before me the undersigned, a Notary Public in and for the county and state aforesaid, came C. Wayne Stearns, Executive Vice President and Cashier of Haysville State Bank, a corporation, to me personally known to be the same person who executed the within instrument as Executive Vice President and Cashier of said corporation, and such person duly acknowledged the execution of the same as Executive Vice President and Cashier, for and on behalf of, and as the act and deed of said corporation.

Rosalie M. Craine, Notary Public  
 My Commission expires AUGUST 1, 1967.

This plat of "AIRPORT INDUSTRIAL PARK", Wichita, Sedgwick County, Kansas, has been approved by the Wichita-Sedgwick County Metropolitan Area Planning Commission, Wichita, Kansas, and is hereby transmitted to the Board of Commissioners of the City of Wichita, Kansas, with the recommendation that such plat be approved as proposed.

Dated this 15<sup>th</sup> day of OCTOBER, 1964.

WICHITA-SEDGWICK COUNTY METROPOLITAN  
 AREA PLANNING COMMISSION  
John W. Throckmorton, Jr., Chairman  
C. Bickley Foster, Secretary

Approved by the Board of County Commissioners this 8<sup>th</sup> day of December, 1964.

Clayton P. Reed, Chairman  
Raymond J. Schuchman, Commissioner  
Clayton F. Reed, Commissioner

K.O. Williams  
 County Clerk

Entered on transfer record this 16 day of December, 1964.  
K.O. Williams, County Clerk

STATE OF KANSAS )  
 COUNTY OF SEDGWICK ) SS

This is to certify that this instrument was filed for record in the Register of Deeds Office on the 18 day of December, 1964, at 4:18 o'clock, P.M. and is duly recorded.

Rufus E. Weising  
 Register of Deeds  
Beard Gilbert  
 Deputy