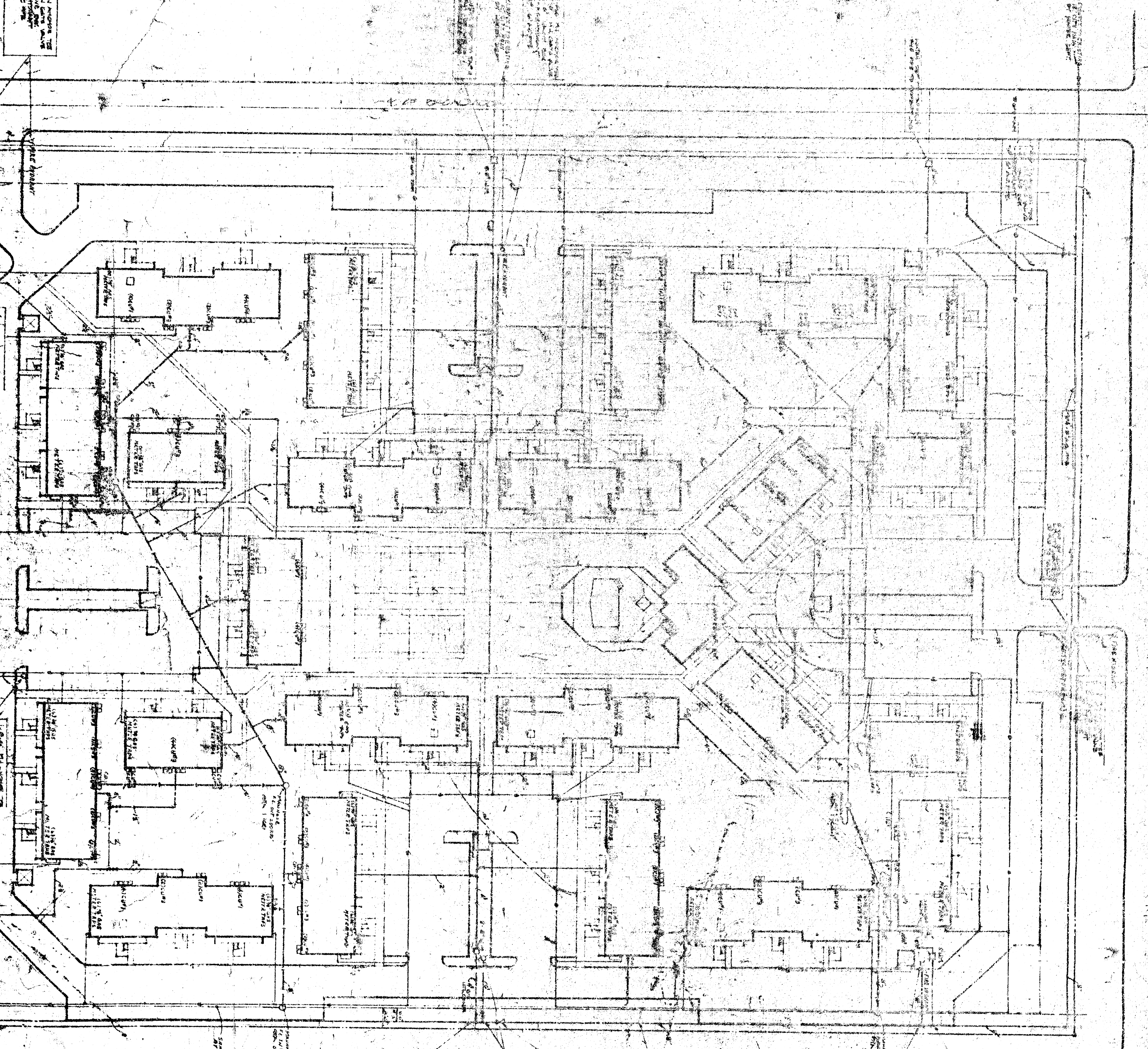


APPROVED AS SHOWN  
By STATE BOARD OF  
Health Officers  
City of Chicago  
January 1914

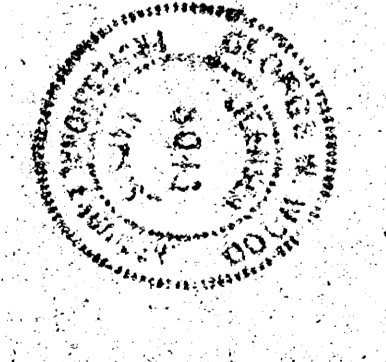
NOT TO SCALE  
This plan is subject to the provisions of the  
Sanitary Code of the City of Chicago, and  
the Board of Health reserves the right to  
require any change in the plan which may  
be necessary for the purpose of enforcing  
the provisions of the Sanitary Code.

PLAN OF THE  
BROADMOOR AT CHICAGO  
21 STREET AND BRADY STREET  
LITCHFIELD PARK  
CHICAGO, ILL.  
1913

PLAN OF THE  
BROADMOOR AT CHICAGO  
21 STREET AND BRADY STREET  
LITCHFIELD PARK  
CHICAGO, ILL.  
1913



21 STREET



THE BROADMOOR AT CHICAGO  
21 STREET AND BRADY STREET  
LITCHFIELD PARK  
CHICAGO, ILL.  
INVESTMENT RECORD

