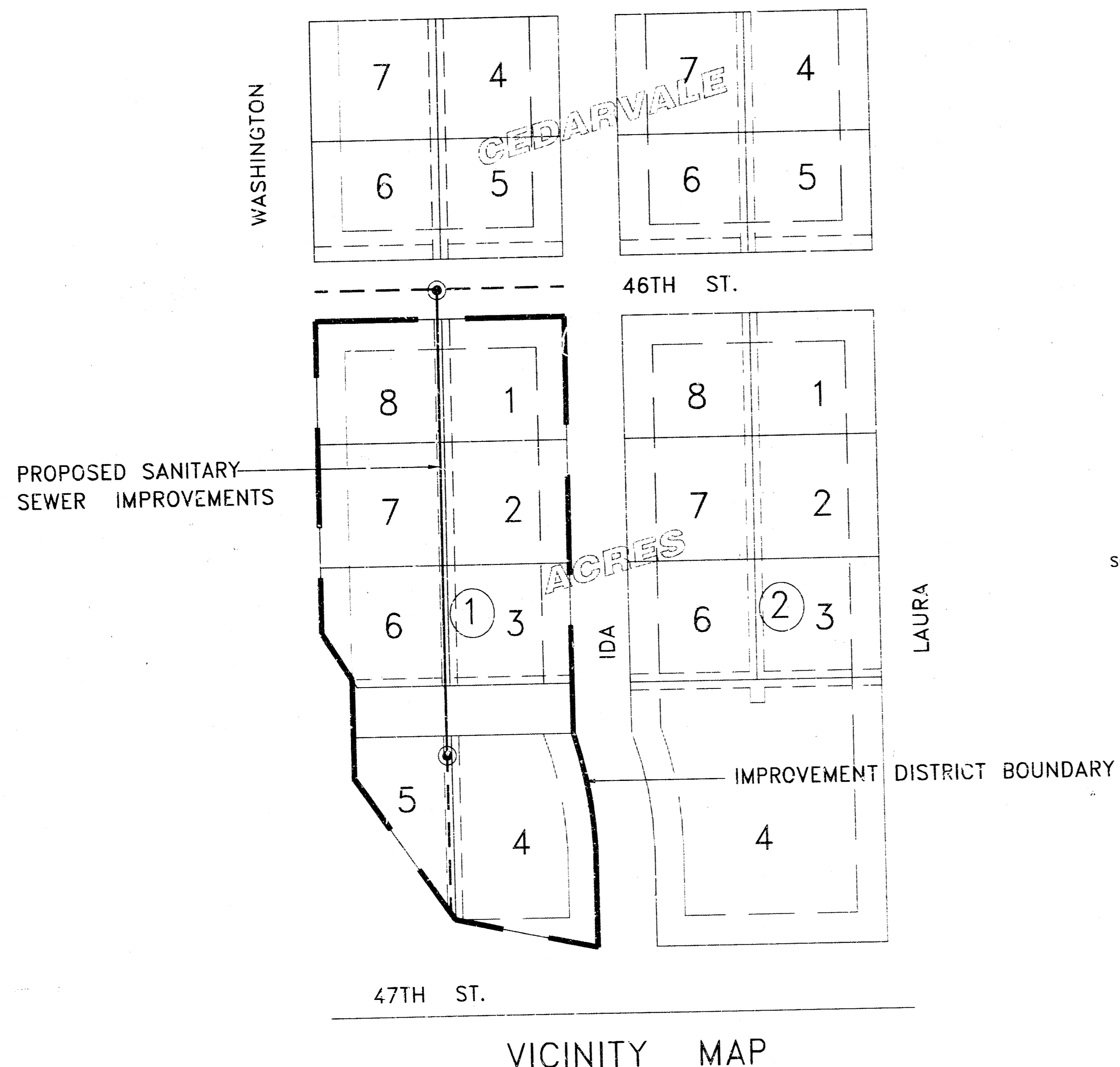


LATERAL 89, MAIN 1, SOUTHWEST INTERCEPTOR SEWER

SERVING LOTS 1 THROUGH 8, BLOCK 1, CEDARVALE ACRES

PROJECT NO. 468 83059 (743827)

CITY OF WICHITA
MICHAEL E. LINDEBAK, CITY ENGINEER
2000



BENCHMARK: CHISLED "□" ON TOP OF CURB NORTH
END RETURN AT NW INTERSECTION OF
WASHINGTON AND IDA ELEV. 83.22 CITY DATUM

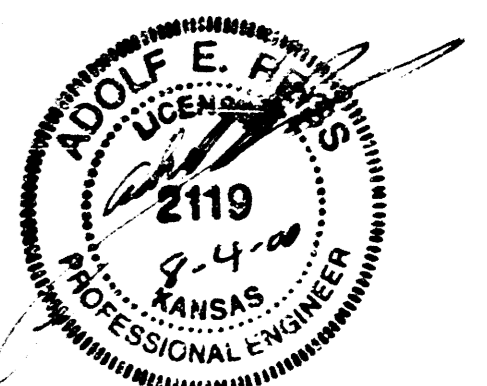
CONTENTS

TITLE SHEET	1
PLAT	2
PLAN/PROFILE	3
MANHOLE DETAILS	4

GENERAL NOTES

- INTERURBAN TRAFFIC GENERATED OUTSIDE THE PROJECT AREA IS NOT TO BE CARRIED THROUGH CONSTRUCTION. LOCAL RESIDENTIAL TRAFFIC GENERATED WITHIN THE PROJECT AREA IS TO BE CARRIED THROUGH CONSTRUCTION AS FURTHER FORMALIZED BY PROJECT SPECIAL PROVISIONS.
- UTILITY SERVICE LINES, POLES, VALVE BOXES, METERS, AND ET CETERA ARE TO BE ADJUSTED AS NECESSARY BY OTHERS PRIOR TO CONSTRUCTION UNLESS THE PLANS SPECIFICALLY CALL FOR THEIR ADJUSTMENT BY THE CONTRACTOR OR UNLESS THE PLANS SPECIFICALLY IDENTIFY A UTILITY TO BE ADJUSTED BY ITS OWNER DURING CONSTRUCTION. EXISTING UTILITIES AND THEIR LOCATION, AS SHOWN ON THE PLANS, REPRESENT THE BEST INFORMATION OBTAINABLE FOR DESIGN. THE PLAN LOCATIONS ARE NOT GUARANTEED AND ADDITIONAL UTILITIES MAY ALSO BE ENCOUNTERED. THE CONTRACTOR WILL BE REQUIRED TO WORK AROUND EXISTING UTILITIES WITHIN THE RIGHT-OF-WAY WHICH DO NOT CONFLICT WITH PROPOSED CONSTRUCTION.
- THE COST OF CONCRETE DRIVEWAY REMOVAL SHALL INCLUDE A SAW CUT OF A MINIMUM DEPTH OF ONE FOURTH OF THE PAVEMENT THICKNESS. THE SAW CUT SHALL BE AT THE PROPERTY LINE OR THE NEAREST JOINT. THE EXACT LOCATION SHALL BE DETERMINED BY THE FIELD ENGINEER.
- RUBBLE FROM THE REMOVAL OF MISCELLANEOUS STRUCTURES AND EXCESS EXCAVATION WHICH IS TO BE WASTED SHALL BE DISPOSED OF ON SITES TO BE PROVIDED BY THE CONTRACTOR. THESE SITES SHALL BE APPROVED BY THE ENGINEER AS TO SUITABILITY, APPEARANCE AND SITE LOCATION. LOCATIONS, THAT IN THE OPINION OF THE ENGINEER, WILL LEAVE AN UNSIGHTLY APPEARANCE WILL NOT BE APPROVED.
ALL DISPOSAL SITES MUST BE APPROVED BY THE KANSAS DEPARTMENT OF HEALTH AND ENVIRONMENT. MATERIAL EITHER STOCKPILED OR DISPOSED OF IN A FLOODPLAIN WOULD REQUIRE A KANSAS STATE BOARD OF AGRICULTURE PERMIT. ANY MATERIAL DUMPED IN WATER OF THE UNITED STATES OR WETLANDS IS SUBJECT TO U.S. CORPS OF ENGINEERS PERMITTING REGULATIONS. ANY MATERIAL BURIED OR STOCKPILED BEYOND APPROVED CONSTRUCTION LIMITS WOULD REQUIRE ADDITIONAL ARCHAEOLOGICAL INVESTIGATIONS UNLESS BURIED IN A PREVIOUSLY APPROVED BORROW LOCATION.
- CONTRACTOR WILL BE REQUIRED TO PROVIDE A MINIMUM ADVANCE NOTICE OF FORTY-EIGHT (48) HOURS TO UTILITY COMPANIES PRIOR TO STARTING ANY EXCAVATION AS FOLLOWS:
KANSAS ONE CALL 1-800-544-7233 OR 687-2470 (LOCAL WICHITA)
THE CONTRACTOR MUST NOTIFY THE FOLLOWING IN CASE OF AN EMERGENCY:
SOUTHWESTERN BELL TELEPHONE 665-1647
MULTIMEDIA CABLEVISION 283-7270
KGE, ELECTRIC 284-5721
CITY OF WICHITA WATER & SEWER 268-4908
KANSAS GAS SERVICE 832-3168
THE CONTRACTOR SHALL NOTIFY PIPELINE COMPANIES AT LEAST 24 HOURS IN ADVANCE OF ANY WORK BEING PERFORMED ACROSS AND/OR ADJACENT TO PIPELINES.
- MAILBOXES WITHIN THE LIMITS OF THE PROJECT SHALL BE REMOVED AND REPLACED BY THE CONTRACTOR AS APPROVED BY THE ENGINEER. CONTRACTOR WILL BE REQUIRED TO MAKE SATISFACTORY PROVISIONS FOR MAIL DELIVERY TO PROPERTIES AFFECTED BY THIS PROJECT DURING CONSTRUCTION.
- PROPERTIES WITHIN THE PROJECT LIMITS MAY HAVE UNDERGROUND SPRINKLER SYSTEMS IN PUBLIC RIGHT-OF-WAY WHICH CONFLICT WITH NEW CONSTRUCTION. CONTRACTOR WILL BE REQUIRED TO REMOVE SUCH IMPROVEMENTS SHOULD THEY NOT BE REMOVED BY THEIR OWNER AT THE TIME OF CONSTRUCTION OF THE PROJECT. THE CONTRACTOR WILL BE REQUIRED TO SALVAGE ALL SPRINKLER HEADS AND/OR VALVES AND GIVE SUCH MATERIAL TO THEIR OWNER. PORTIONS OF UNDERGROUND SPRINKLER SYSTEMS NOT IN CONFLICT WITH NEW CONSTRUCTION SHALL BE PROTECTED FROM DAMAGE AND SHALL REMAIN IN PLACE. ALL WORK IN CONNECTION WITH UNDERGROUND SPRINKLER SYSTEMS SHALL BE CONSIDERED SUBSIDIARY TO THE CONTRACT PAY ITEMS OF WORK.
- TREES AND SHRUBS IN PUBLIC RIGHT-OF-WAY WHICH ARE IN DIRECT CONFLICT WITH PROPOSED NEW CONSTRUCTION SHALL BE REMOVED BY THE CONTRACTOR WITH THE ENGINEER'S APPROVAL. TREES AND SHRUBS WHICH ARE NOT IN DIRECT CONFLICT WITH PROPOSED NEW CONSTRUCTION SHALL BE SAVED AND PROTECTED FROM DAMAGE. THE BID ITEM "CLEARING R/W AND SITE PREPARATION" SHALL BE FULL COMPENSATION FOR ALL ITEMS RELATED TO TREE REMOVAL IN STREET R/W.
- THE CONTRACTOR SHALL BE RESPONSIBLE FOR PRESERVING PROPERTY IRONS. THE CONTRACTOR WILL BE REQUIRED TO RE-ESTABLISH ANY PROPERTY IRONS WHICH ARE DAMAGED OR DESTROYED BY HIS CONSTRUCTION OPERATIONS. SUCH IRONS SHALL BE RE-ESTABLISHED BY A LICENSED LAND SURVEYOR IN ACCORDANCE WITH STATE LAWS.
- THE CONTRACTOR SHALL GIVE ALL PROPERTY OWNERS AND/OR TENANTS OF DEVELOPED PROPERTY DIRECTLY ABUTTING THE CONSTRUCTION OF THIS PROJECT A MINIMUM OF TEN (10) DAYS ADVANCE NOTICE PRIOR TO START OF CONSTRUCTION.
- THE CONTRACTOR SHALL ADJUST WATER VALVE BOXES, WATER METER BOXES AND FIRE HYDRANTS AS NOTED ON THE PLANS AND AS DIRECTED BY THE ENGINEER. MATERIALS, EQUIPMENT AND LABOR REQUIRED FOR THE ADJUSTMENT OF WATER METER AND VALVE BOXES AND FIRE HYDRANTS WILL NOT BE PAID FOR DIRECTLY BUT WILL BE CONSIDERED SUBSIDIARY TO OTHER ITEMS OF WORK IN THE CONTRACT. THE WATER DEPARTMENT SHALL FIELD LOCATE WATER VALVES ONE TIME DURING CONSTRUCTION WHEN REQUESTED BY THE CONTRACTOR. IT SHALL BE CONTRACTOR'S RESPONSIBILITY TO PRESERVE SUCH FIELD LOCATIONS DURING THE CONSTRUCTION PROCESS. WATER VALVES, WATER VALVE BOXES OR FIRE HYDRANTS DAMAGED DURING CONSTRUCTION SHALL BE REPAIRED BY THE CONTRACTOR AT HIS OWN EXPENSE.
- THE CONTRACTOR MUST EXAMINE THE CONSTRUCTION SITE PRIOR TO BIDDING AND BE SATISFIED AS TO THE WORK SHOWN FOR COMPLETION. AFTER BIDS HAVE BEEN RECEIVED, THE CONTRACTOR SHALL NOT ASSERT THAT THERE WAS A MISUNDERSTANDING OF THE QUANTITIES OF WORK OR OF THE NATURE OF THE WORK TO BE COMPLETED.
- ALL WATER MAINS AND APPURTENANCES SHALL BE INSTALLED IN ACCORDANCE WITH CITY OF WICHITA, KANSAS STANDARD SPECIFICATIONS FOR WATER MAIN INSTALLATIONS NO. 14533.
- CONTRACTOR SHALL NOT START WORK ON THE PROJECT UNTIL THE PROJECT INSPECTOR ASSIGNED TO THE PROJECT IS PRESENT ON THE SITE. ANY WORK DONE WITHOUT INSPECTION WILL BE REQUIRED TO BE UNCOVERED FOR INSPECTION.
- CONTRACTOR SHALL PROVIDE TRAFFIC CONTROL IN ACCORDANCE WITH THE CURRENT EDITION OF THE MANUAL OF UNIFORM TRAFFIC CONTROL DEVICES (MUTCD) TO ENSURE A SAFE WORK ZONE FOR THE TRAVELING PUBLIC.

Booked
P-155
11-1-00
R. Loomis
per plan



REISS & GOODNESS ENGINEERS
2160 WEST 21st STREET
WICHITA, KANSAS 67203
(316) 832-0210

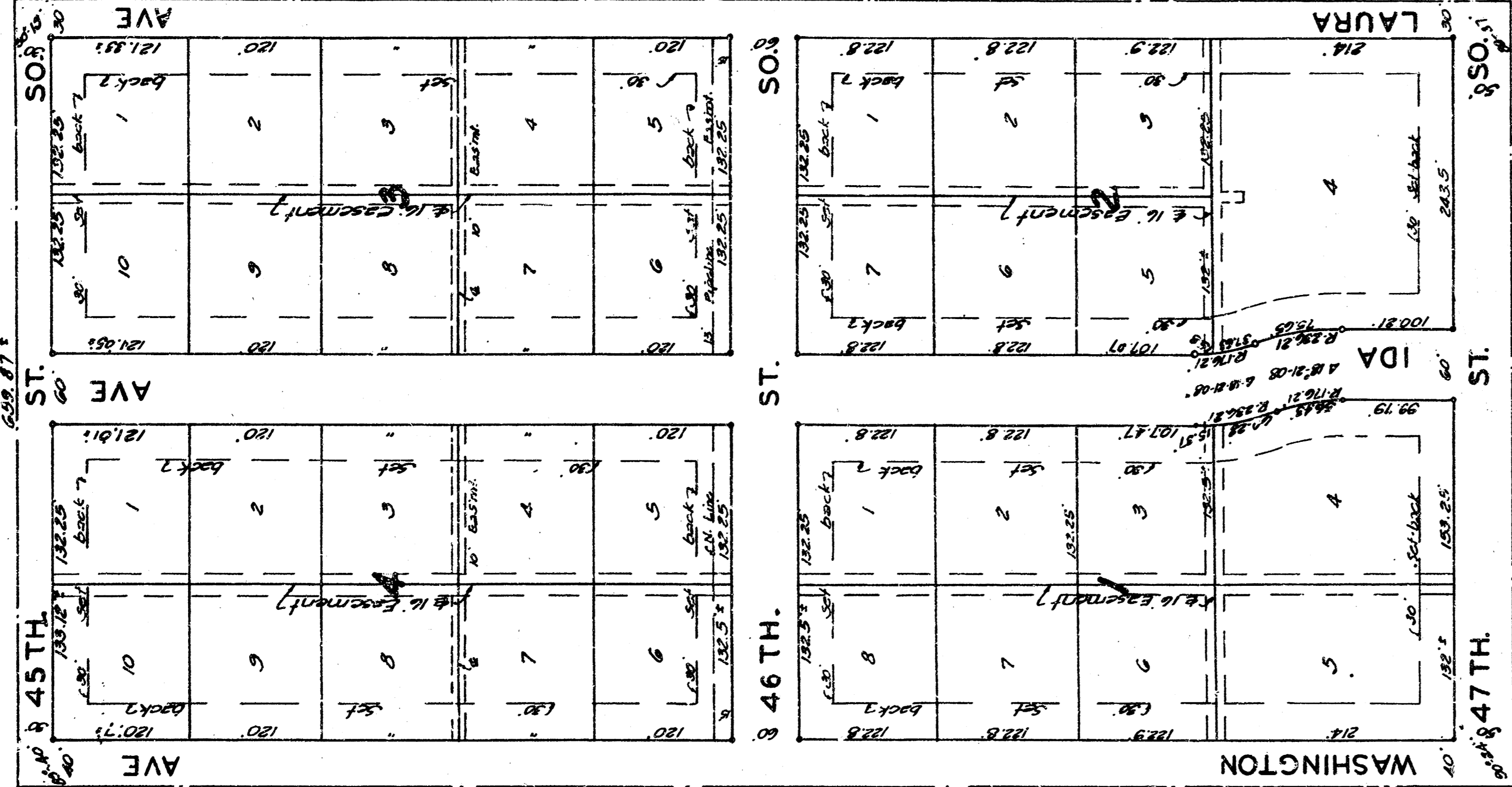
REVISION	DIRECTORY	DRAWN BY	FILE NAME	CHECKED BY	DESIGNED BY	PROJECT
	WCHTA/WATER	C.E.	COVER		RP	

CUSTOMER

SCALE: NONE	PROJECT NO. ST0399
DATE: 7-9-2000	SHEET 1 OF 4

CEDARVALE ACRES

SEDGWICK COUNTY, KANSAS



and The Wichita Methodist City Union
a corporation by and for said County, Kansas, and State of
Kansas, Secretary

State of Kansas } ss. I, Clyde M. Baughman, Surveyor
Sedgwick County, Kansas, do hereby certify
that I have surveyed and platted CEDARVALE
ACRES, Sedgwick County, Kansas, and that the
accompanying plat is a true and correct exhibit
of the property surveyed, described as follows:
of the West 1/2 of the S.W. 1/4 of the S.E. 1/4, Sec. 16,
T.17N., R.12E.



I, Clyde M. Baughman, Surveyor
know all men by these
seals that we Elmer J. White and Sadie
White have caused the land described in
the Surveyor's certificate to be platted into
lots, blocks, streets and avenues to be known
as CEDARVALE ACRES, Sedgwick County,
Kansas. Easements are hereby granted, as
indicated on the plat for the construction
and maintenance of all public utilities. The
streets and avenues are hereby dedicated
to and for the use of the public.
Sadie White
Elmer J. White

The Wichita Methodist City Union, a corporation by
and for said County, Kansas, and State of
Kansas, Secretary

My Commission Expires Sept. 5, 1933
Notary Public
This plat of CEDARVALE
ACRES, Sedgwick County, Kansas, has been
submitted to and considered by the City
Planning Commission of Wichita, Kansas, and
is hereby transmitted to the Board of City
Commissioners with the recommendation
that such plat be approved, as prepared.
Dated this 1 day of October, 1932.
The City Planning Commission of Wichita,
Kansas.

Johnnie B. Riley Chairman
James Lee Secretary

Approved by the Board of
City Commissioners this 1 day of October,
1932.

Richard James Mayor
Johnnie B. Riley City Clerk

We, The Division of Home
Missions and Church Extension of the Methodist
Church, Inc. do hereby cer-
tify that we are the owners of a certain mortgage
from The Wichita Methodist City Union, Inc.
CEDARVALE ACRES, Sedgwick County, Kansas which
mortgage was dated May 29, 1932 filed in
book 33 page 39 of the mortgage record,
Sedgwick County, Kansas, and we do hereby
consent to the dedication of the Streets, Avenues
and easements as indicated on the plat for
the construction and maintenance of public
utilities

Richard James Vice President
Johnnie B. Riley Secretary

State of Kansas } ss. Be it remembered that on this
9th day of October, 1932 before me a Notary
Public in and for said County and State came
D. B. Kneell, Vice President and
Secretary of the Board of Home Missions and Church
Extension of the Methodist Church, Inc. to me known
to be the same persons who executed the foregoing
instrument of writing and duly acknowledged the
execution of the same as voluntary act and
deed; in testimony whereof I have hereunto set my
hand and affixed my Notarial Seal the day and
year above written.

My Commission Expires _____ Notary Public

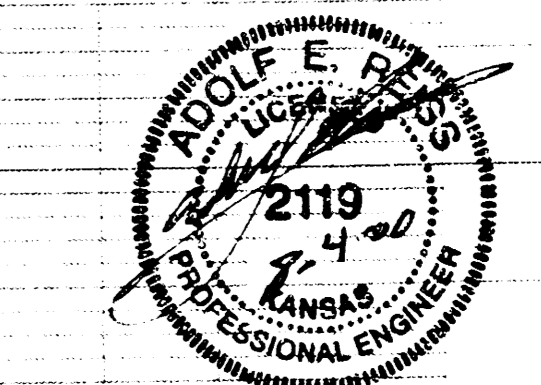
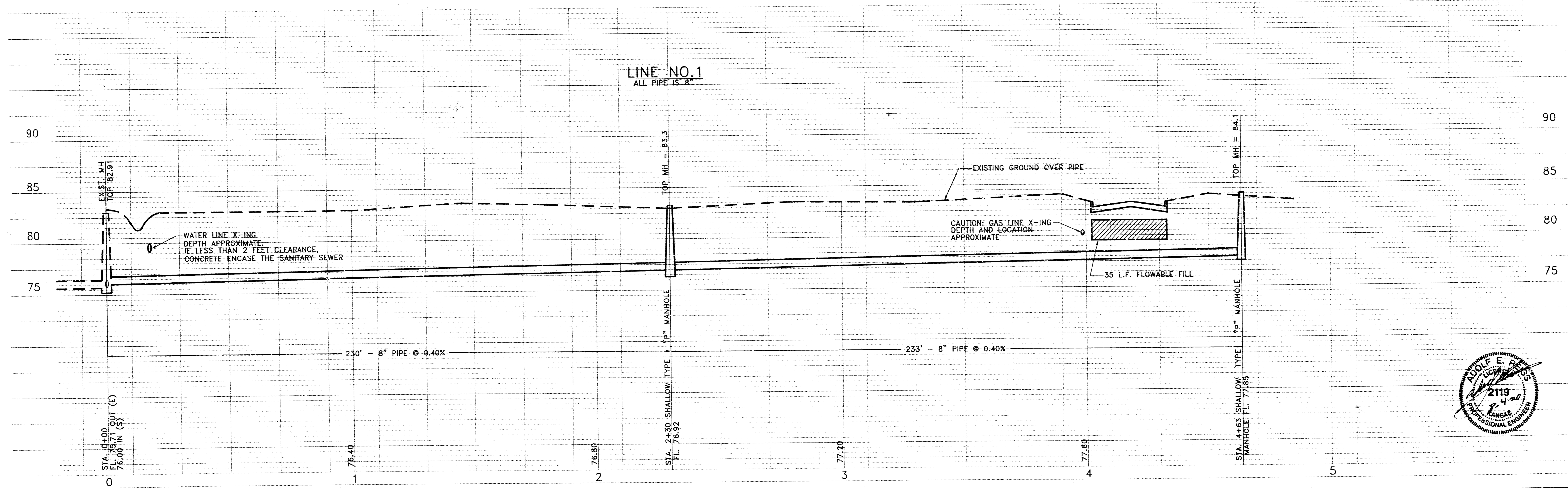
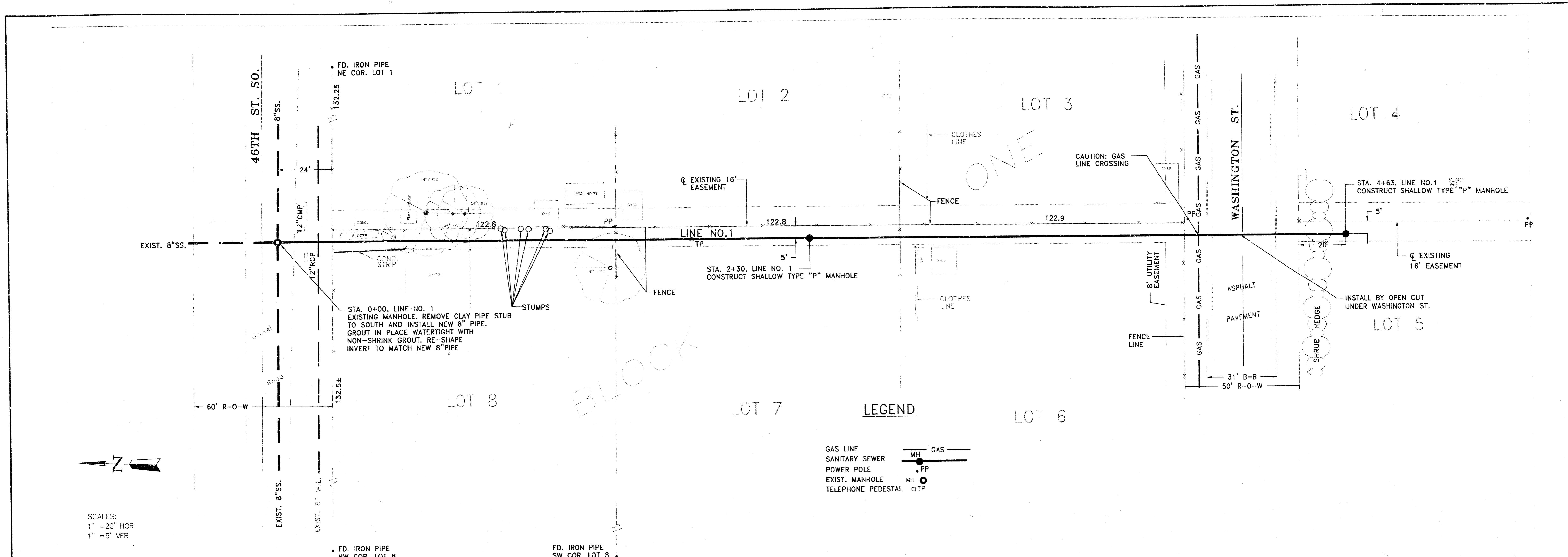
State of Kansas } ss. This is to certify that
Sedgwick County, Kansas, has caused this plat to be
filed for record in the Office
of the Register of Deeds, this 1 day of
October, 1932 at 10:55 o'clock
AM, and is duly recorded.

Johnnie B. Riley Notary Public

Approved by the Board of
County Commissioners this 1 day of October,
1932.
Entered on transfer record
this 22nd day of October, 1932
Johnnie B. Riley County Clerk
57670

Plat. Book M-295 Page 297

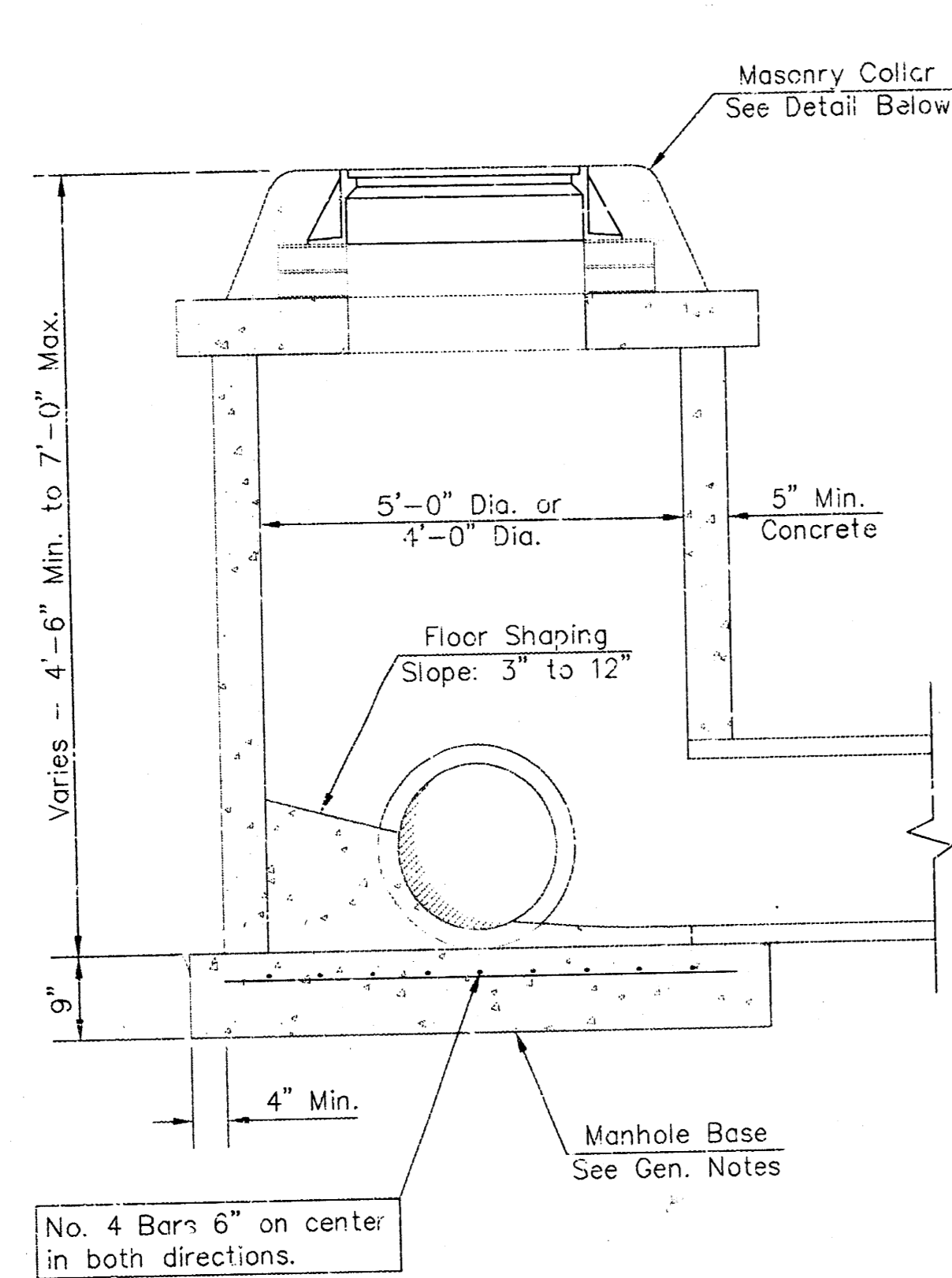
C1-8-9
3-9



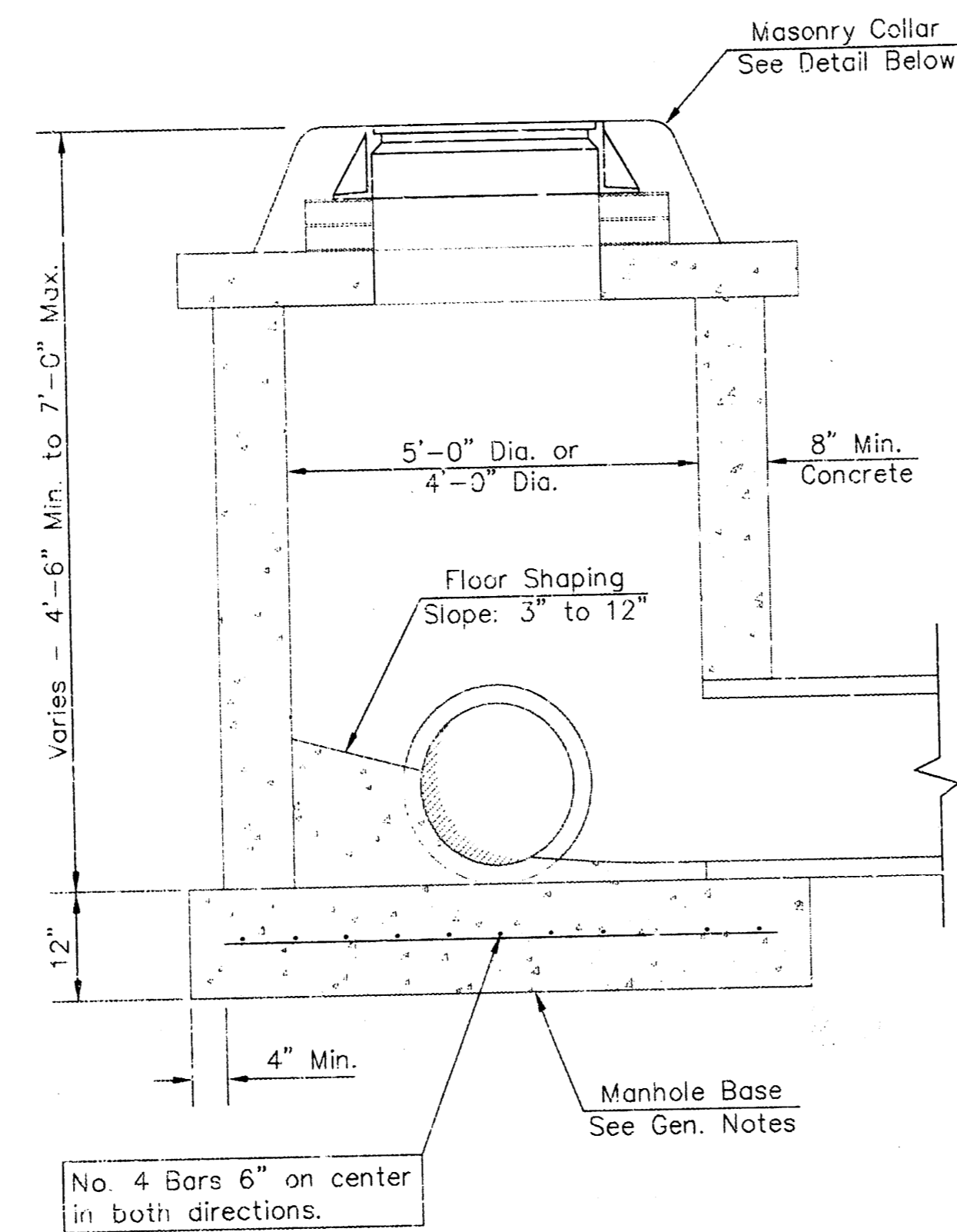
REISS & GODNESS ENGINEERS
 2180 WEST 21st STREET
 WICHITA, KANSAS 67203
 (316) 832-0213

REVISION	DIRECTORY	DRAWN BY	FILE NAME	CHECKED BY	DESIGNED BY	PROJECT	CUSTOMER	SCALE	PROJECT NO.
	WICHITA/WATER	C.E.	LATERAL	R.P.	R.P.	LATERAL 89, MAIN 1, SOUTHWEST INTERCEPTOR SEWER	CITY OF WICHITA PROJECT NO. 468 83059 (743827)	1" = 20' HORIZONTAL 1" = 5' VERTICAL	SEC400

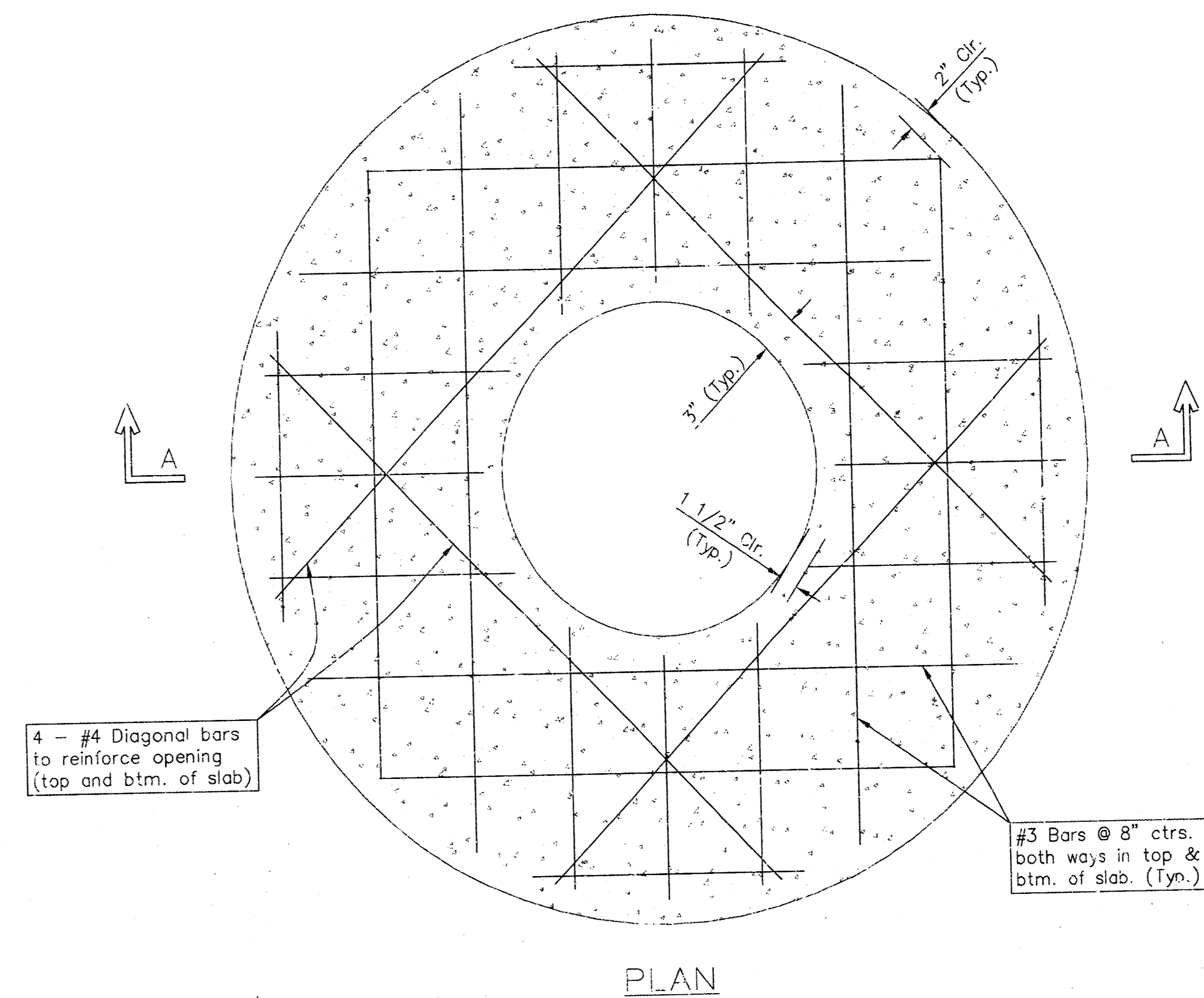
DATE: 7-1-2000 SHEET: 3 OF 4



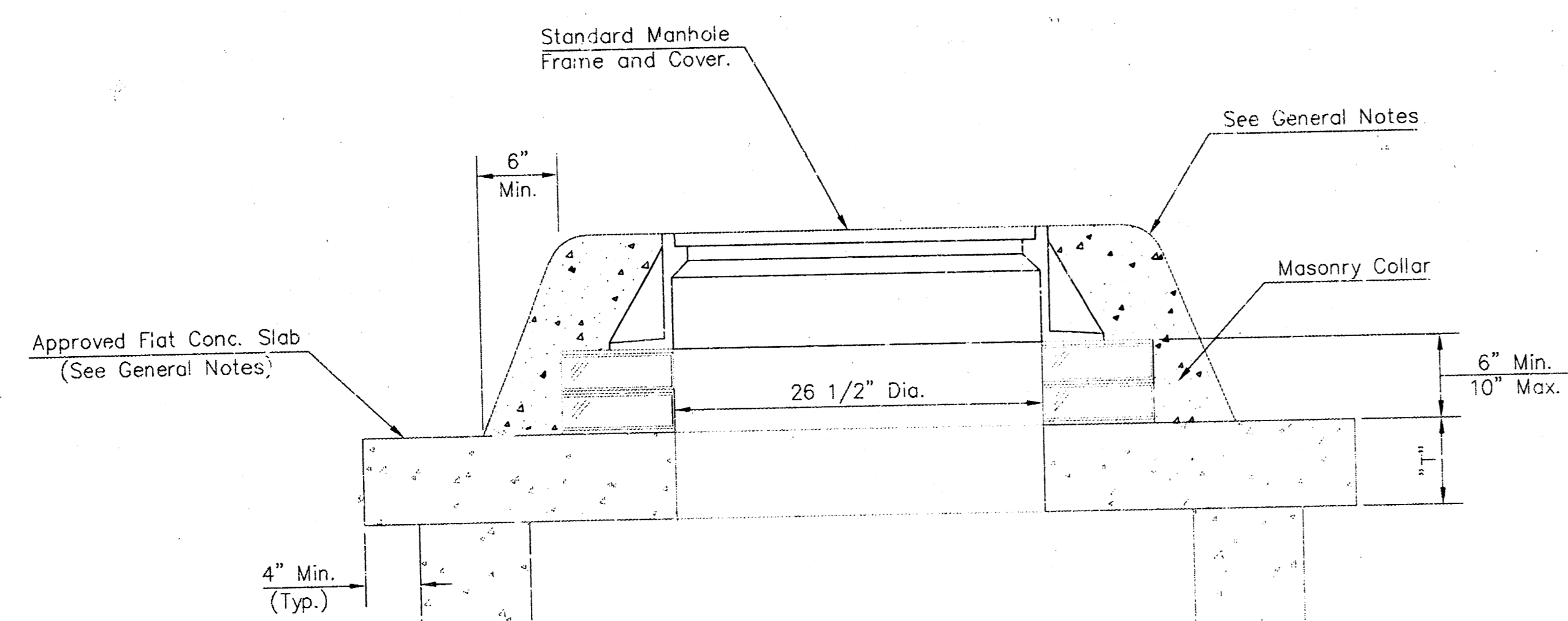
SHALLOW TYPE "P" MANHOLE



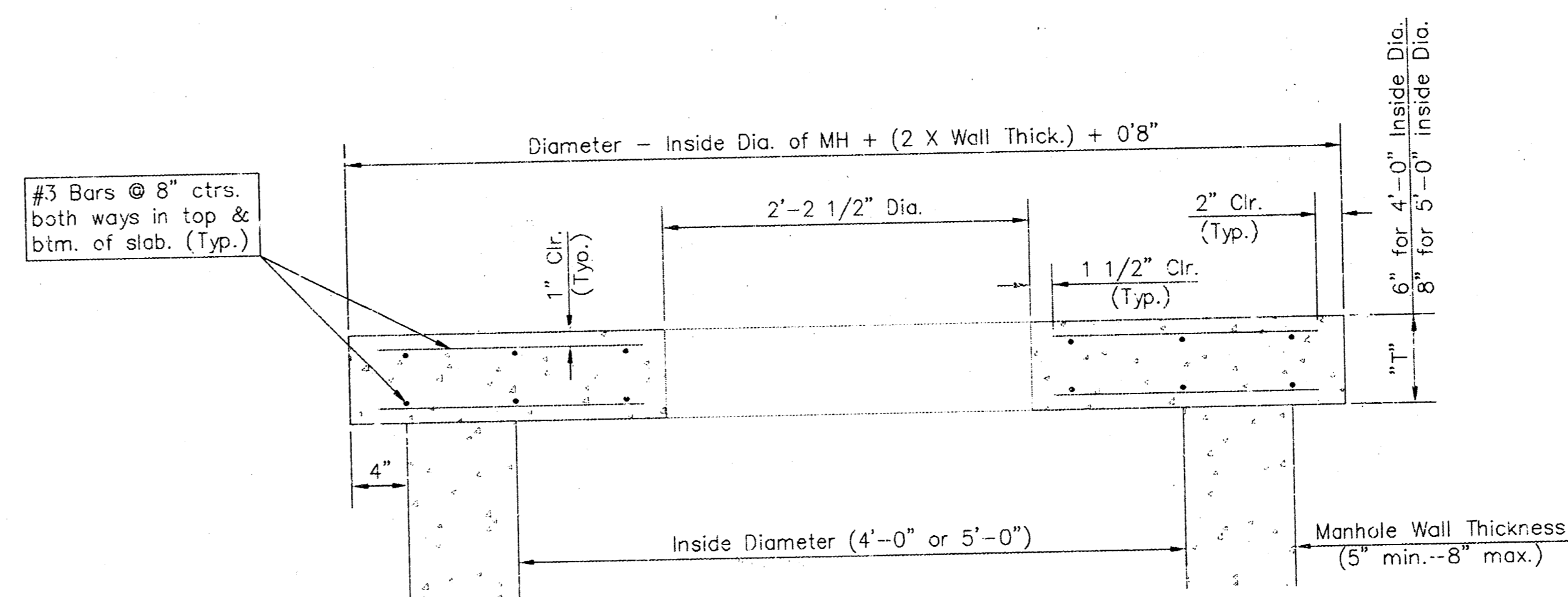
SHALLOW TYPE "C" MANHOLE



PLAN



MASONRY COLLAR DETAIL



SECTION A-A

FLAT CONCRETE SLAB DETAILS

GENERAL NOTES

- Mortar used in masonry construction shall contain 8 sacks of cement per cubic yard. Concrete used in manhole bases shall conform to the requirements of concrete for concrete pavement construction as specified in the city standard paving specifications using city concrete cement mix without air entraining admixture. Mortar shall be placed around the manhole ring as shown on the drawings when manholes are constructed in unpaved areas. Manholes constructed where pipe sizes are smaller than 24" shall have an inside diameter of 4". Manholes constructed where pipe sizes are 24" or larger shall have an inside diameter of 5". Completed manhole shall be without leaks and water tight.
- Reinforcing steel shall be installed in the manhole bases and shall consist of no. 4 bars placed on 6" centers in both directions. The manhole base reinforcement shall be placed 6" above the bottom of the manhole base. All costs for furnishing and installing reinforcing steel shall be included in the unit price bid for the manhole.
- The floors of all manholes shall be shaped with flow channels such that the manholes will be self cleaning and free of areas where solids could be deposited as sewage flows through the manhole from all inlet pipes to the outlet pipe. Flow channels shall be formed to match the bottom halves of the inflowing pipes and the outflowing pipe as shown by the drawings. Manhole floors shall have slopes of 3 inches per foot in the areas outside of the flow channels sloped toward the flow channels. Pipes laid through manholes shall have the top half removed to neat lines for the full inside diameter of the manhole. Manhole floors shall then be shaped around the bottom half of the pipe which forms the flow channel.
- Pipes installed within the excavation made for the manhole shall be cradled with concrete to the limits of the manhole excavation. When clay pipe is used, the cradle shall extend to the first joint outside the manhole. The cradle shall be terminated at the clay pipe joint in a manner which will maintain the flexibility of the joint. Cost of cradle within manhole excavation or to clay pipe joints adjacent to manhole shall be included in the unit price bid for the manhole.
- Manhole cover castings and manhole frame castings shall conform to the requirements as indicated in the standard specifications and as shown in the standard detail drawings.
- The crowns of inflowing pipes shall never be set lower than the crown of the outflowing pipe.
- Standard shallow manholes type "P" and "C" shall be paid for at the unit price bid per each for the type and diameter indicated. All standard shallow manhole diameters will be 4' unless indicated otherwise.
- All brick used in manhole construction shall meet Grade SW of ASTM C652 or C62-87.

<p>THE CITY OF WICHITA</p> <p>CITY ENGINEER'S OFFICE C.F. HALL - SEVENTH FLOOR 305 NORTH MAIN STREET WICHITA, KANSAS 67202 (316) 268-5009 (316) 268-4114 FAX</p>	<p>SHALLOW MANHOLES</p> <p>TYPE 'P' & 'C'</p>	
	<p>M. E. LINDEBAK P.E. - CITY ENGINEER</p>	
<p>PROJECT NUMBER</p> <p>468 83059</p>	<p>INDEX CODE</p> <p>743827</p>	
<p>DATE</p> <p>JULY 2000</p>	<p>SHEET 4 OF 4</p>	

C:\WICHITA\CEDARVAL\SHLWMH2.DWG