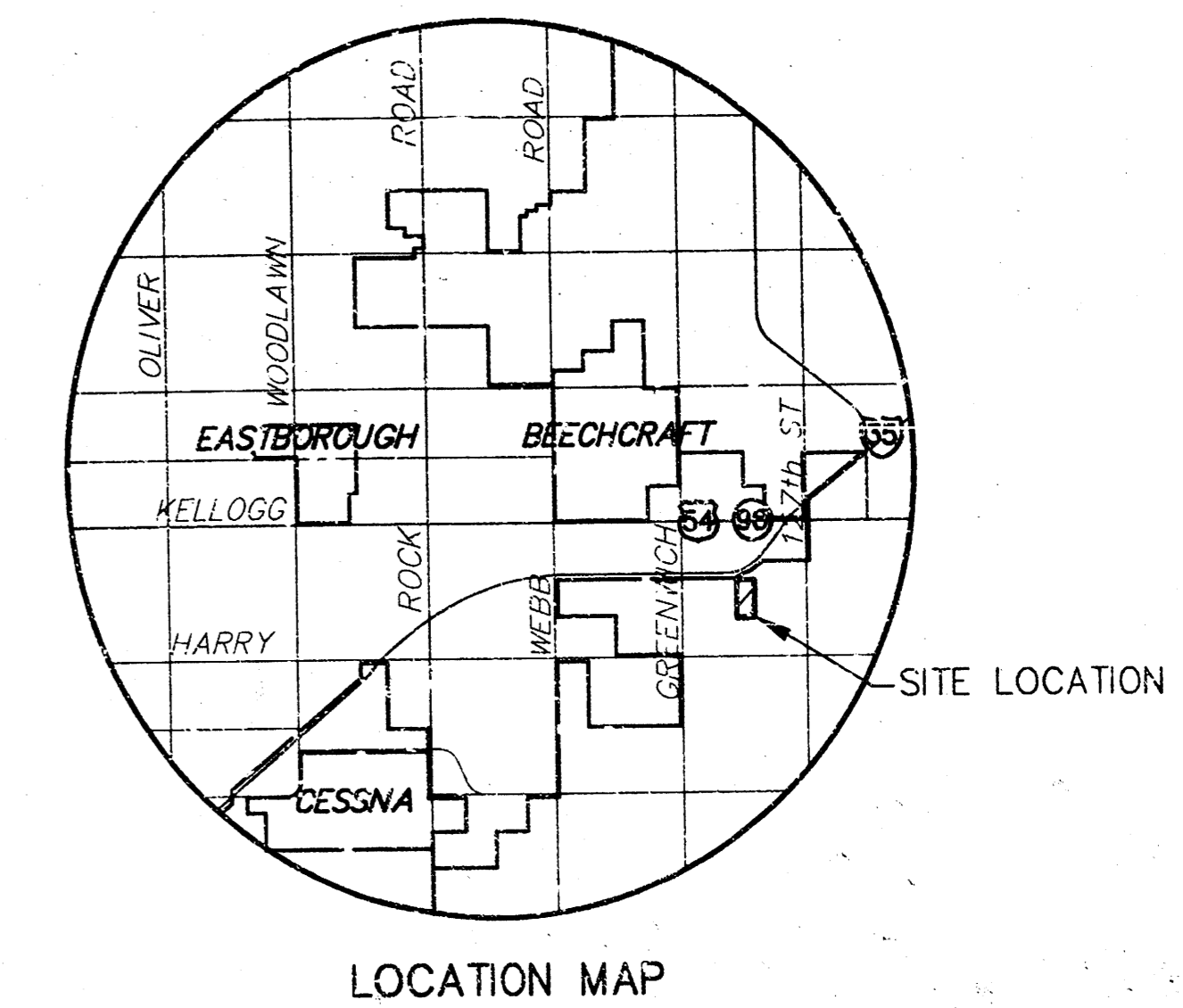


SANITARY SEWER PLANS CEDAR VIEW SECOND ADDITION LATERAL 301, FOUR MILE CREEK SEWER

PROJECT NO. 468-83223

WICHITA, SEDGWICK COUNTY, KANSAS
MICHAEL E. LINDEBAK, CITY ENGINEER

OCA 743866



GENERAL NOTES

1. UNLESS SHOWN OR STATED OTHERWISE ON THESE DRAWINGS, MATERIALS AND CONSTRUCTION SHALL BE IN ACCORDANCE WITH CITY OF WICHITA CONCRETE PAVEMENT AND ASPHALTIC CONCRETE PAVEMENT SPECIFICATIONS.
2. THE CONTRACTOR SHALL BE RESPONSIBLE FOR PRESERVING PROPERTY IRONS. THE CONTRACTOR WILL BE REQUIRED TO RE-ESTABLISH ANY PROPERTY IRONS WHICH ARE DAMAGED OR DESTROYED BY HIS CONSTRUCTION OPERATIONS. SUCH IRONS SHALL BE RE-ESTABLISHED BY A LICENSED LAND SURVEYOR IN ACCORDANCE WITH STATE LAWS.
3. TRANSITION CURB FROM FULL HEIGHT COMBINATION CURB AND GUTTER TO ROLL TYPE COMBINATION CURB AND GUTTER IS TO BE PAID AS BID FOR LINEAL FEET COMBINED CURB AND GUTTER (3 5/8" ROLL).
4. EXISTING UTILITIES AND THEIR LOCATIONS, AS SHOWN ON THE PLANS REPRESENT THE BEST INFORMATION OBTAINABLE FOR DESIGN. LOCATION INFORMATION HAS BEEN OBTAINED FROM THE VARIOUS UTILITY COMPANIES AND IS EITHER FROM COMPANY RECORD DRAWINGS OR COMPANY PROVIDED FIELD LOCATIONS. THE PLAN LOCATIONS SHOWN ARE NOT GUARANTEED. ADDITIONAL EXISTING UTILITIES MAY ALSO BE ENCOUNTERED.

5. CONTRACTOR WILL BE REQUIRED TO PROVIDE A MINIMUM ADVANCE NOTICE OF FORTY-EIGHT (48) HOURS TO UTILITY COMPANIES PRIOR TO STARTING ANY EXCAVATION AS FOLLOWS:

KANSAS ONE-CALL 1-800-344-7233
OR 687-2470 (LOCAL WICHITA)

THE CONTRACTOR MUST NOTIFY THE FOLLOWING IN CASE OF AN EMERGENCY:

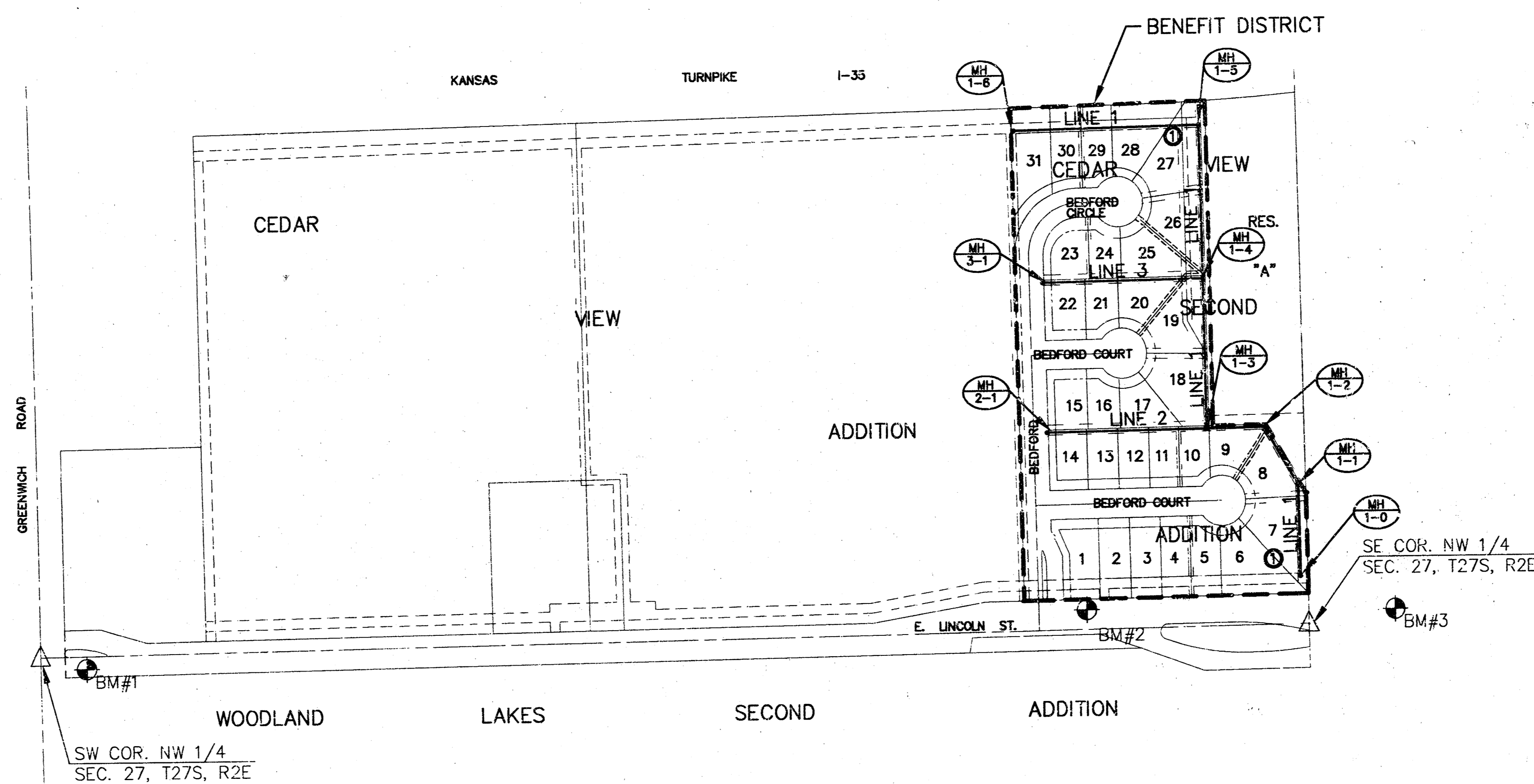
SOUTHWESTERN BELL TELEPHONE COMPANY	1-800-734-7590
CABLEVISION	283-2061
KG&E (GAS & ELECTRIC)	383-8600
CITY OF WICHITA WATER & SEWER MAINT.	262-6000
WILLIAMS NATURAL GAS CO.	529-6600

6. RUBBLE FROM THE REMOVAL OF MISCELLANEOUS STRUCTURES AND EXCESS EXCAVATION WHICH IS TO BE WASTED SHALL BE DISPOSED OF ON SITES TO BE PROVIDED BY THE CONTRACTOR. THESE SITES SHALL BE APPROVED BY THE ENGINEER AS TO SUITABILITY, APPEARANCE AND SITE LOCATION. LOCATIONS THAT, IN THE OPINION OF THE ENGINEER, WILL LEAVE AN UNSIGHTLY APPEARANCE WILL NOT BE APPROVED. ALL DISPOSAL SITES MUST BE APPROVED BY THE KANSAS DEPARTMENT OF HEALTH AND ENVIRONMENT. MATERIAL EITHER STOCKPILED OR DISPOSED OF IN A FLOOD PLAIN WOULD REQUIRE A KANSAS STATE BOARD OF AGRICULTURE PERMIT. ANY MATERIAL DUMPED IN WATERS OF THE UNITED STATES OR WETLANDS IS SUBJECT TO U.S. CORP'S OF ENGINEERS PERMITTING REGULATIONS. ANY MATERIAL BURIED OR STOCKPILED BEYOND APPROVED CONSTRUCTION LIMITS WOULD REQUIRE ADDITIONAL ARCHAEOLOGICAL INVESTIGATIONS UNLESS PERFORMED IN A PREVIOUSLY APPROVED BORROW LOCATION.
7. A SAW CUT OF AT LEAST ONE-HALF THE DEPTH OF THE EXISTING SURFACE COURSES OR ONE-FOURTH THE DEPTH OF THE EXISTING TOTAL PAVEMENT THICKNESS SHALL BE PROVIDED AT LOCATIONS WHERE PROPOSED CONSTRUCTION ABUTS AN EXISTING SURFACE OR PAVEMENT FOR WHICH PARTIAL REMOVAL OF THAT SURFACE OR PAVEMENT IS REQUIRED. SAW JOINT TO FACILITATE REMOVAL WITHIN THREE (3) FEET OF EXISTING JOINTS WILL NOT BE PERMITTED AND FOR SUCH INSTANCES THE LIMITS OF REMOVAL SHALL EXTEND TO THE EXISTING JOINT. SUCH SAW CUTS WILL NOT BE PAID FOR DIRECTLY AND THIS COST SHALL BE CONSIDERED AS SUBSIDIARY TO THE REMOVAL OF SURFACE OR PAVEMENT.

8. CONTRACTOR SHALL RESEED AND MULCH ALL DISTURBED AREAS.

9. TREE REMOVAL APPROVED BY OWNER OR OWNERS REPRESENTATIVE.

10. CONSTRUCTION FOR SANITARY SEWER, WATER MAINS AND PAVING/STORM SEWER IMPROVEMENTS MAY OCCUR SIMULTANEOUSLY. CONTRACTORS SHALL COORDINATE THEIR OPERATIONS AS REQUIRED.



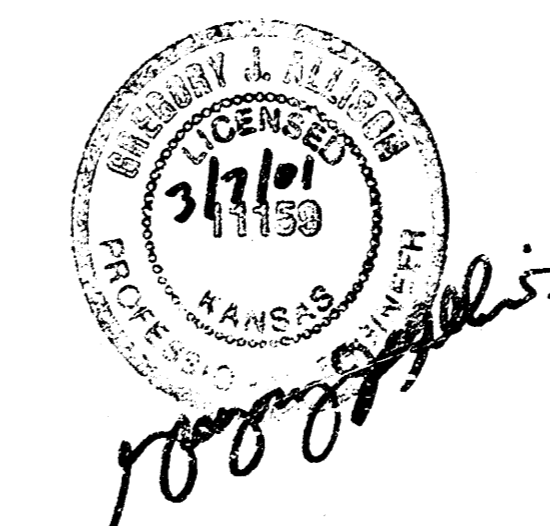
INDEX TO DRAWINGS

SHEET NO.	DESCRIPTION
1	TITLE SHEET
2	MANHOLE DETAILS
3	EASEMENT GRADING
4	LINE 1
5	LINE 1 & LINE 2
6	LINE 3
7	FINAL PLAT

*Booked
p-177
8-6-01
R. D.L.
per Plan*

BENCHMARKS

- BM #1 RAILROAD SPIKE IN SECOND POWER POLE EAST OF GREENWICH ROAD AND SOUTH OF LINCOLN STREET
ELEV. = 1336.39
- BM#2 "□" CUT TC, 25 +0R- EAST OF NE CORNER LINCOLN & BEDFORD CT.
ELEV. = 1354.99
- BM#3 "□" CUT NE CORNER HEADWALL @ RCB LINCOLN NEAR CENTER SECTION.
ELEV. = 1346.58



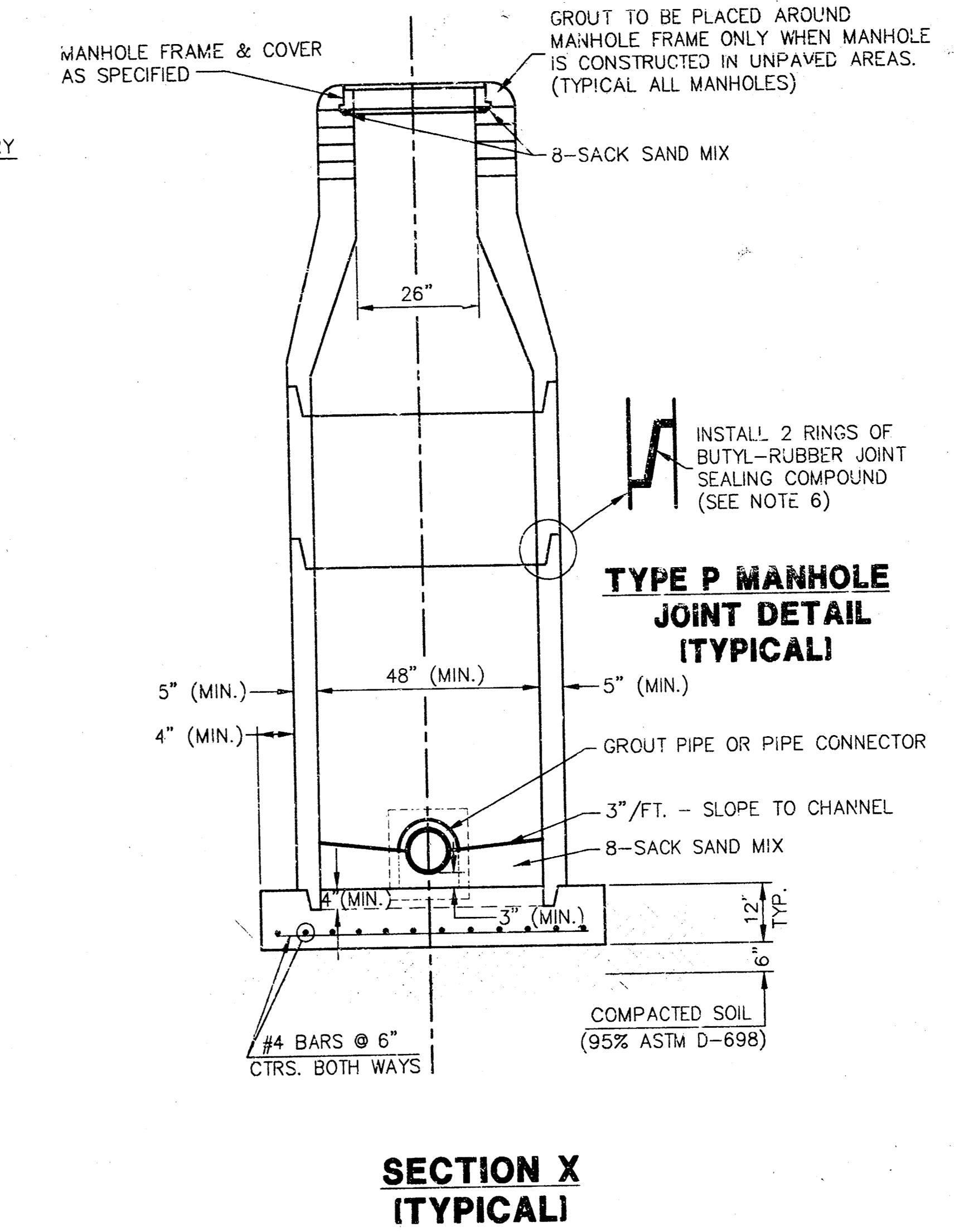
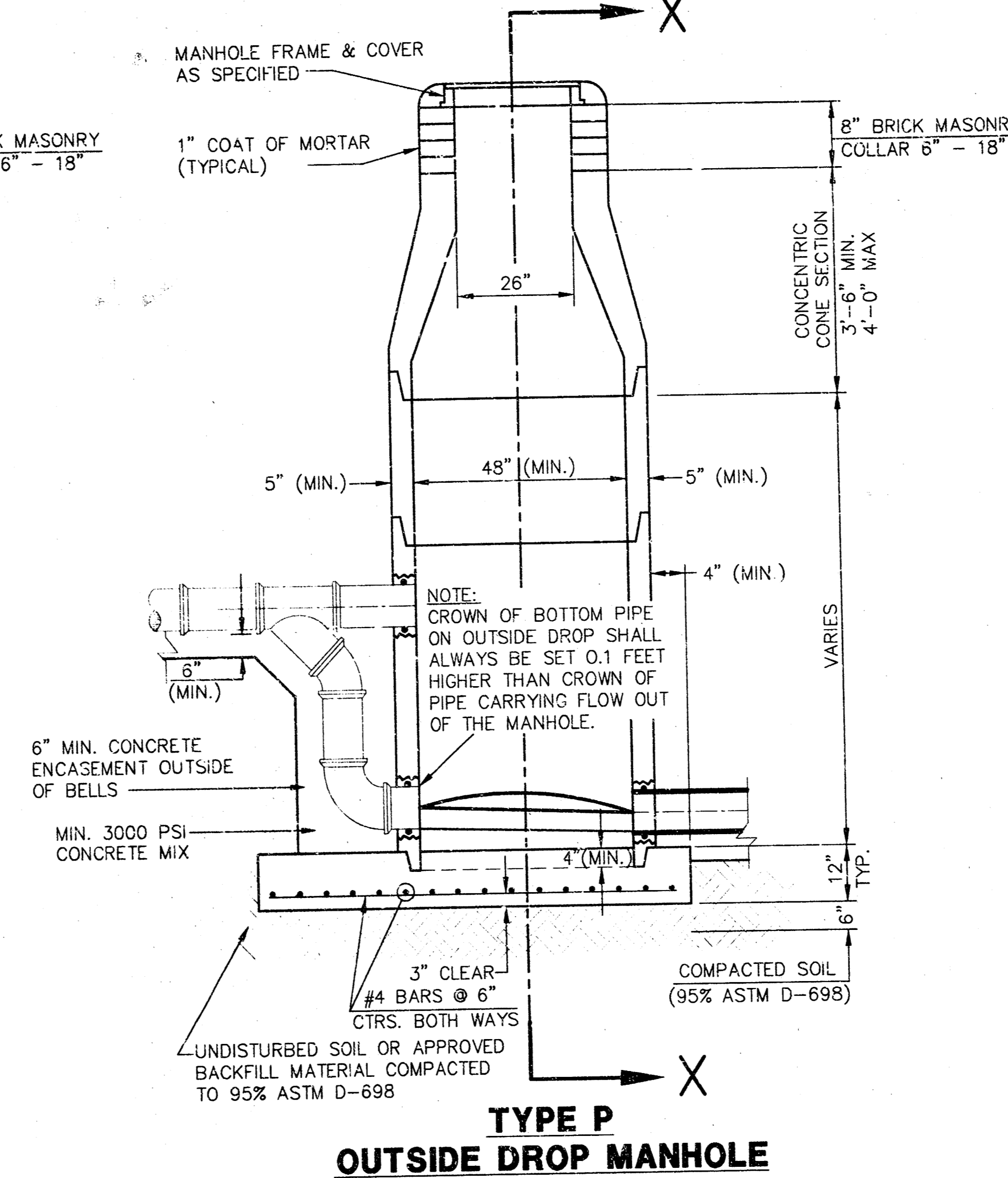
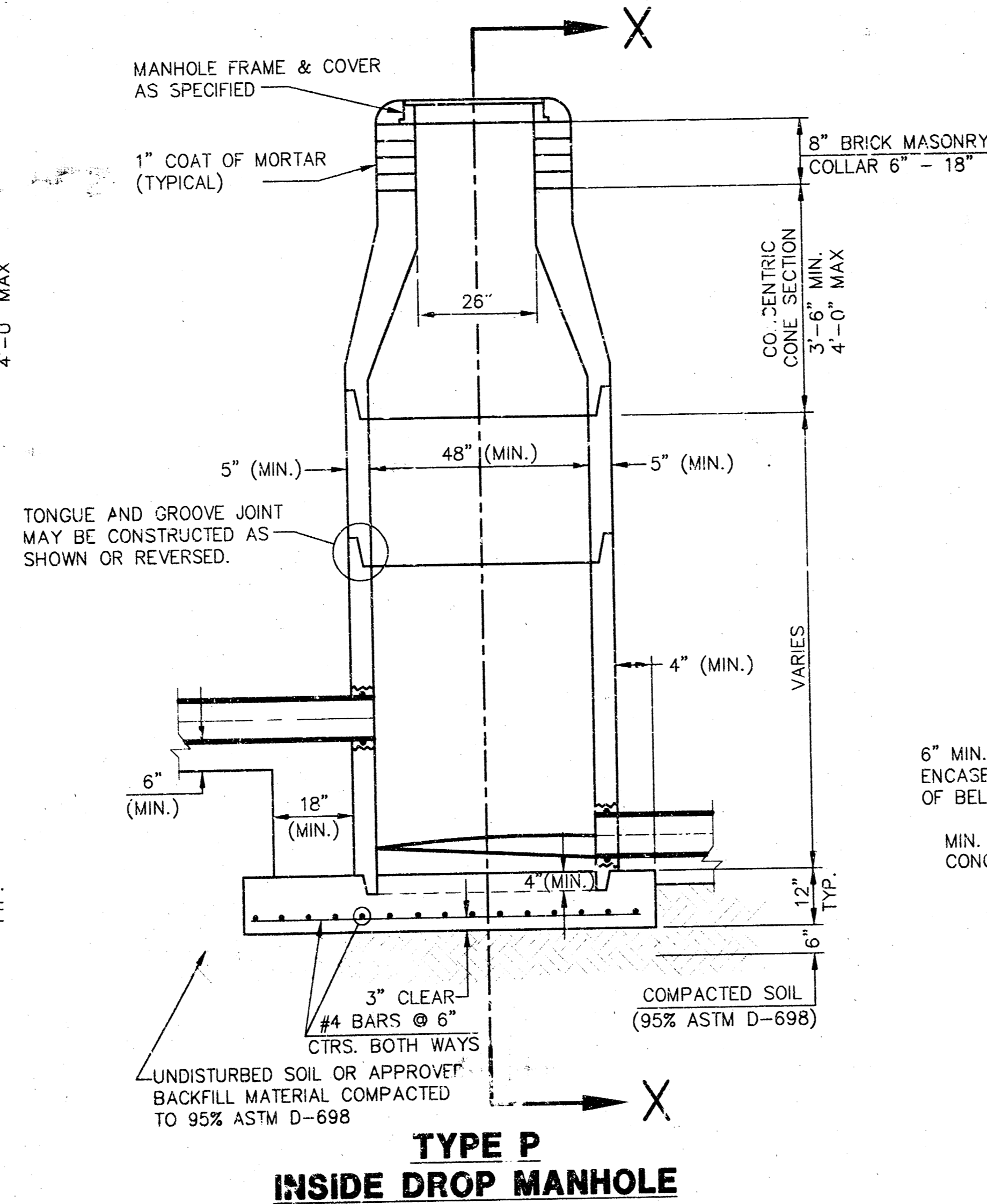
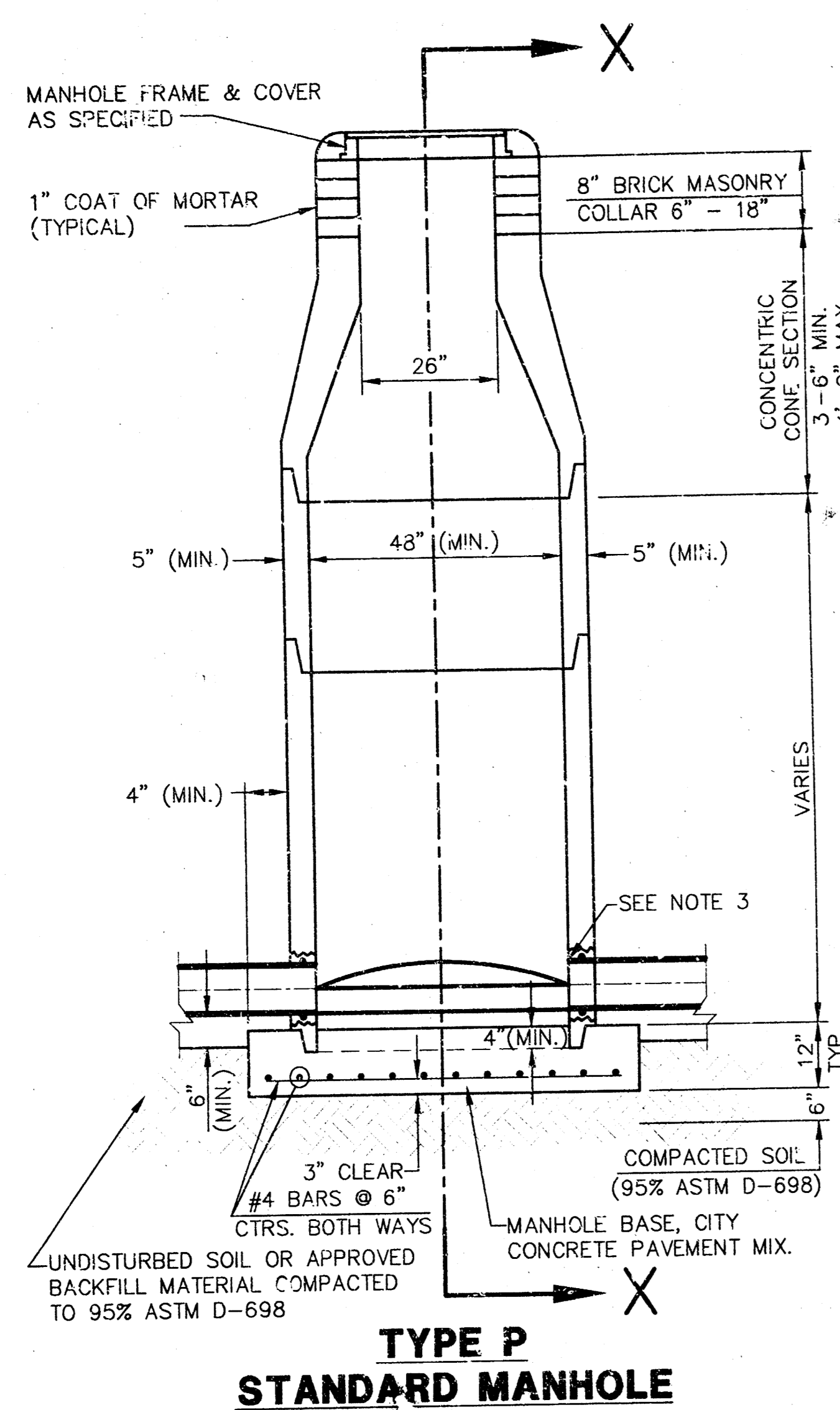
SCALE: 1" = 200'

LEGEND

• IRON

	CEDAR VIEW SECOND ADDITION		
	PROJECT NAME		
	SANITARY SEWER PLANS		
	SHEET TITLE		
DESIGN BY:	HWJ	DFL	
DATE:	FEBRUARY 2001	00226BT	1 / 7
		JOB NO.	SHEET/OF
MID-KANSAS ENGINEERING CONSULTANTS, INC. 411 N. WEBB ROAD WICHITA, KS. 67206 316-684-9600			

SEWER APPURTENANCES DETAILS



GENERAL NOTES - PRECAST MANHOLE NOTES

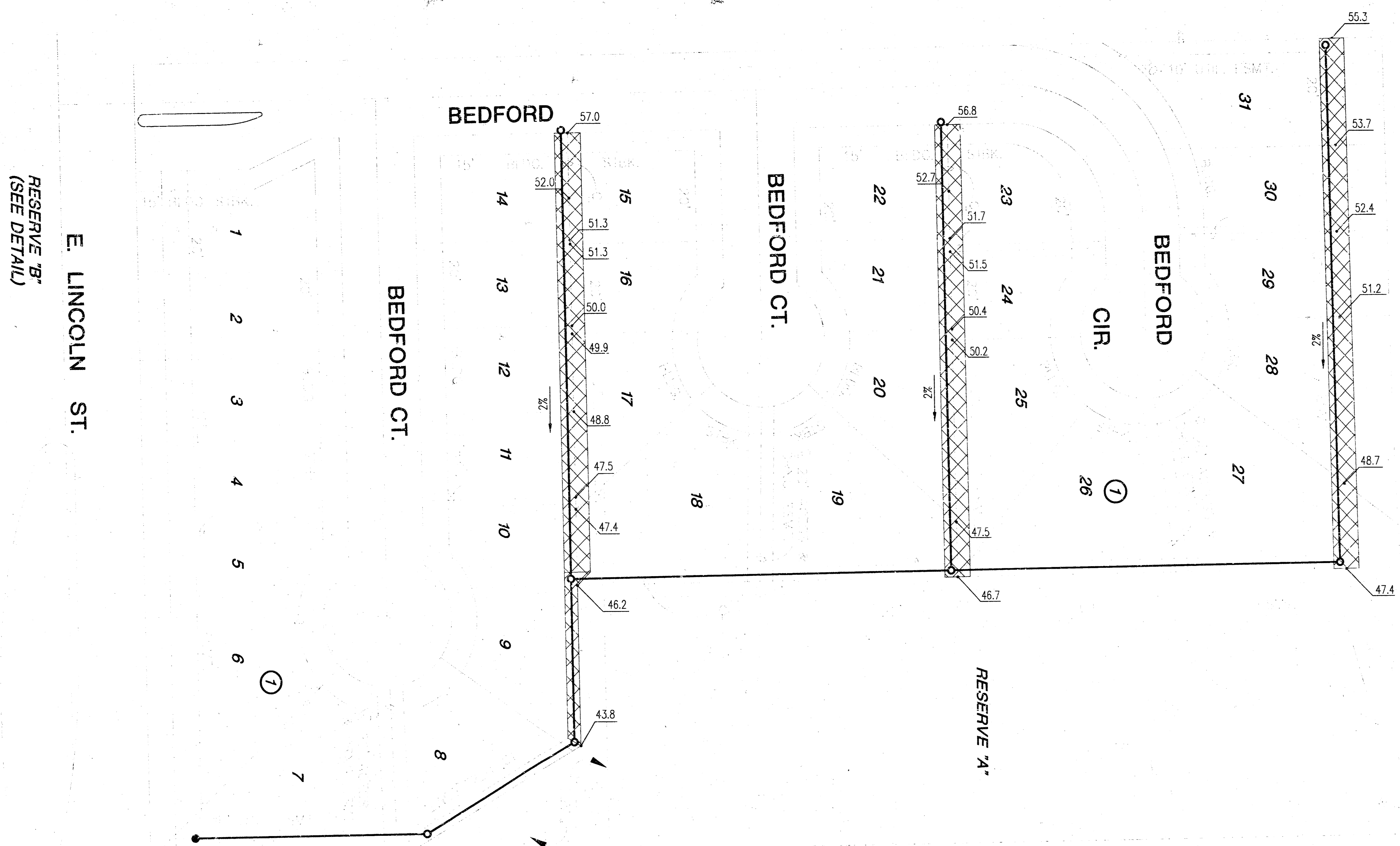
- ALL PRECAST CONCRETE MANHOLE SECTIONS SHALL CONFORM TO THE LATEST REVISIONS OF U.S.T.M. C478 AS MODIFIED BY THE SPECIFICATIONS.
- NON-SHRINK GROUT SHALL BE NON-METALLIC TYPE.
- APPROVED FLEXIBLE WATERSTOP GASKETS SHALL BE INSTALLED TO JOIN THE SEWER TO THE MANHOLE WALL WHEN A.B.S. COMPOSITE PIPE OR P.V.C. PIPE IS USED. FOR OTHER TYPES OF PIPE THE SEWER SHALL BE GROUTED IN PLACE WITH NON-SHRINK GROUT. THE SEWER PIPE SHALL BE SUPPORTED WITH CONCRETE ENCASEMENT A MINIMUM OF 3 FEET FROM THE MANHOLE WALL AND TO THE FIRST JOINT FOR V.C.P. SUCH THAT THE JOINT REMAINS FLEXIBLE.
- ALL INSIDE SURFACES OF THE CONCRETE MANHOLE WHICH WOULD BE EXPOSED TO SEWER GAS SHALL BE COATED WITH 2 COATS TNE MEC SERIES 66 HI-BUILD EPOXOLINE, DRY THICKNESS OF 8 MILS (MIN.).
- EXTERIOR MANHOLE WALLS SHALL BE COATED WITH 1 COAT MOBILARMA 633 BITUMINOUS COATING.
- JOINT SEALING COMPOUND SHALL BE KENT SEAL NO. 2 OR APPROVED EQUAL.
- PRECAST MANHOLES SHALL BE SET AT LEAST 4 INCHES INTO THE MANHOLE BASE.
- TOP OF MANHOLE FLOOR SLAB SHALL BE AT LEAST 3 INCHES BELOW THE FLOW LINE OF THE OUTLET PIPE TO INSURE SUFFICIENT MINIMUM THICKNESS OF SHAPED INVERT.
- LIFTING HOLES SHALL BE FILLED WITH NON-SHRINK GROUT AND THE INTERIOR SURFACE COATED AS SPECIFIED.
- MORTAR USED IN MASONRY CONSTRUCTION SHALL CONTAIN 8 SACKS OF CEMENT PER CUBIC YARD. CONCRETE USED IN MANHOLE BASES SHALL CONFORM TO THE REQUIREMENTS OF CONCRETE FOR CONCRETE PAVEMENT CONSTRUCTION AS SPECIFIED IN THE CITY STANDARD PAVING SPECIFICATIONS USING CITY CONCRETE PAVEMENT MIX WITHOUT AIR ENTRAINING ADMIXTURE. MORTAR SHALL BE PLACED AROUND THE MANHOLE RING AS SHOWN ON THE DRAWINGS WHEN MANHOLES ARE CONSTRUCTED IN UNPAVED AREAS. MANHOLES CONSTRUCTED WHERE PIPE SIZES ARE SMALLER THAN 24" SHALL HAVE AN INSIDE DIAMETER OF 4". MANHOLES CONSTRUCTED WHERE PIPE SIZES ARE 24" OR LARGER SHALL HAVE AN INSIDE DIAMETER OF 5". COMPLETED MANHOLE SHALL BE WITHOUT LEAKS AND WATER TIGHT.
- REINFORCING STEEL SHALL BE INSTALLED IN THE MANHOLE BASES AND SHALL CONSIST OF NO. 4 BARS PLACED ON 6" CENTERS IN BOTH DIRECTIONS. THE MANHOLE BASE REINFORCEMENT SHALL BE PLACED AT LEAST 3" ABOVE THE BOTTOM OF THE MANHOLE BASE. ALL COSTS FOR FURNISHING AND INSTALLING REINFORCING STEEL SHALL BE INCLUDED IN THE UNIT PRICE BID FOR THE MANHOLE.
- OPENINGS SHALL BE CUT INTO THE MANHOLE WALL WHEN OUTSIDE DROPS ARE CONSTRUCTED ON EXISTING MANHOLES. SUCH OPENINGS CUT INTO EXISTING MANHOLES SHALL BE AS SMALL AS PRACTICAL TO FACILITATE INSTALLING AND GROUTING THE NEW PIPE IN PLACE. WATERSTOP GASKETS SHALL BE USED WITH P.V.C. AND A.B.S. COMPOSITE PIPE. THE NEW PIPE SHALL BE GROUTED INTO THE OPENING USING AN APPROVED NONSHRINK GROUT FOR THE FULL MANHOLE WALL THICKNESS. THE EXTERIOR OF THE COMPLETED CONNECTION SHALL BE SEALED WITH AN APPROVED BITUMINOUS COATING SUCH THAT THE CONNECTION WILL BE WATER TIGHT. FLOOR OF MANHOLE SHALL BE MODIFIED TO FORM NEW FLOW CHANNEL FOR THE NEW CONNECTION AS INDICATED BY THE DRAWING. THIS WORK, INCLUDING MODIFICATION OF MANHOLE FLOOR, SHALL BE PAID FOR AT THE UNIT PRICE BID FOR OUTSIDE DROP STACK CONSTRUCTED ON EXISTING MANHOLE.
- THE FLOORS OF ALL MANHOLES SHALL BE SHAPED WITH FLOW CHANNELS SUCH THAT THE MANHOLES WILL BE SELF CLEANING AND FREE OF AREAS WHERE SOLIDS COULD BE DEPOSITED AS SEWAGE FLOWS THROUGH THE MANHOLE FROM ALL INLET PIPES TO THE OUTLET PIPE. FLOW CHANNELS SHALL BE FORMED TO MATCH THE BOTTOM HALVES OF THE INFLOWING PIPES AND THE OUTFLOWING PIPE AS SHOWN BY THE DRAWINGS EXCEPT FOR OUTSIDE DROP MANHOLES. FLOW CHANNELS FOR INSIDE DROP MANHOLES SHALL BE CONSTRUCTED AS INDICATED BY THE DRAWING. MANHOLE FLOORS SHALL HAVE SLOPES OF 3 INCHES PER FOOT IN THE AREAS OUTSIDE OF THE FLOW CHANNELS SLOPED TOWARD THE FLOW CHANNELS. PIPES LAID THROUGH MANHOLES SHALL HAVE THE TOP HALF REMOVED TO HEAT LINES FOR THE FULL INSIDE DIAMETER OF THE MANHOLE. MANHOLE FLOORS SHALL THEN BE SHAPED AROUND THE BOTTOM HALF OF THE PIPE WHICH FORMS THE FLOW CHANNEL.
- PIPES INSTALLED WITHIN THE EXCAVATION MADE FOR THE MANHOLE SHALL BE CRADLED WITH CONCRETE TO THE LIMITS OF THE MANHOLE EXCAVATION. WHEN CLAY PIPE IS USED, THE CRADLE SHALL EXTEND TO THE FIRST JOINT OUTSIDE THE MANHOLE. THE CRADLE SHALL BE TERMINATED AT THE CLAY PIPE JOINT IN A MANNER WHICH WILL MAINTAIN THE FLEXIBILITY OF THE JOINT. COST OF CRADLE WITHIN MANHOLE EXCAVATION OR TO CLAY PIPE JOINTS ADJACENT TO MANHOLE SHALL BE INCLUDED IN THE UNIT PRICE BID FOR THE MANHOLE.
- MANHOLE COVER CASTINGS AND MANHOLE FRAME CASTINGS SHALL CONFORM TO THE REQUIREMENTS AS INDICATED IN THE STANDARD SPECIFICATIONS AND AS SHOWN IN THE STANDARD DETAIL DRAWING.
- THE VERTICAL DROP IN INSIDE DROP MANHOLES SHALL NOT EXCEED 2' FOR INFLOWING PIPES SIZED 12" OR SMALLER AND 2' FOR INFLOWING PIPES LARGER THAN 12". THE CROWNS OF INFLOWING PIPES SHALL NEVER BE SET LOWER THAN THE CROWN OF THE OUTFLOWING PIPE.
- STANDARD MANHOLES AND STANDARD INSIDE DROP MANHOLES SHALL BE BID AS STANDARD MANHOLES FOR THE TYPE AND DIAMETER INDICATED. OUTSIDE DROP MANHOLES SHALL BE BID AS STANDARD OUTSIDE DROP MANHOLES FOR THE TYPE AND DIAMETER INDICATED. ALL MANHOLE DIAMETERS WILL BE 4' UNLESS INDICATED OTHERWISE.
- A BRICK MASONRY COLLAR SHALL BE INSTALLED BETWEEN THE CAST IRON FRAME AND THE CONCENTRIC CONE. THE COLLAR WILL HAVE 8" WALLS AND A VERTICAL HEIGHT OF 6" MINIMUM AND 12" MAXIMUM. A 1" COAT OF MORTAR WILL BE PLASTERED ON THE OUTSIDE OF THE COLLAR. THE USE OF PRE-CAST CONCRETE SPACERS FOR MANHOLE TOP ADJUSTMENT IS ALSO ALLOWED.

<p>THE CITY OF WICHITA CITY ENGINEER'S OFFICE CITY HALL - SEVENTH FLOOR 405 NORTH MAIN STREET WICHITA, KANSAS 67202 (316) 268-5011 (316) 268-4114 FAX</p>	STANDARD TYPE 'P' MANHOLES	
	M. E. LINDEBAK P.E. - CITY ENGINEER	
	PROJECT NUMBER 468-83223	INDEX CODE OCA
	DATE MAR 96	SHEET 2 OF 7

H:\CIVIL\96037\002\DWG\SEWER\MAN-CITY\022601.DWG

DATE	
BY	
CHECKED	
PLAN	

DSNR: WDK OPER. TRS SCALE: 1"=1.00
 H:\CIVIL\00062\DWG\SMAN\00062B03.DWG 07/25/00 06:37:59 AM AM CDT



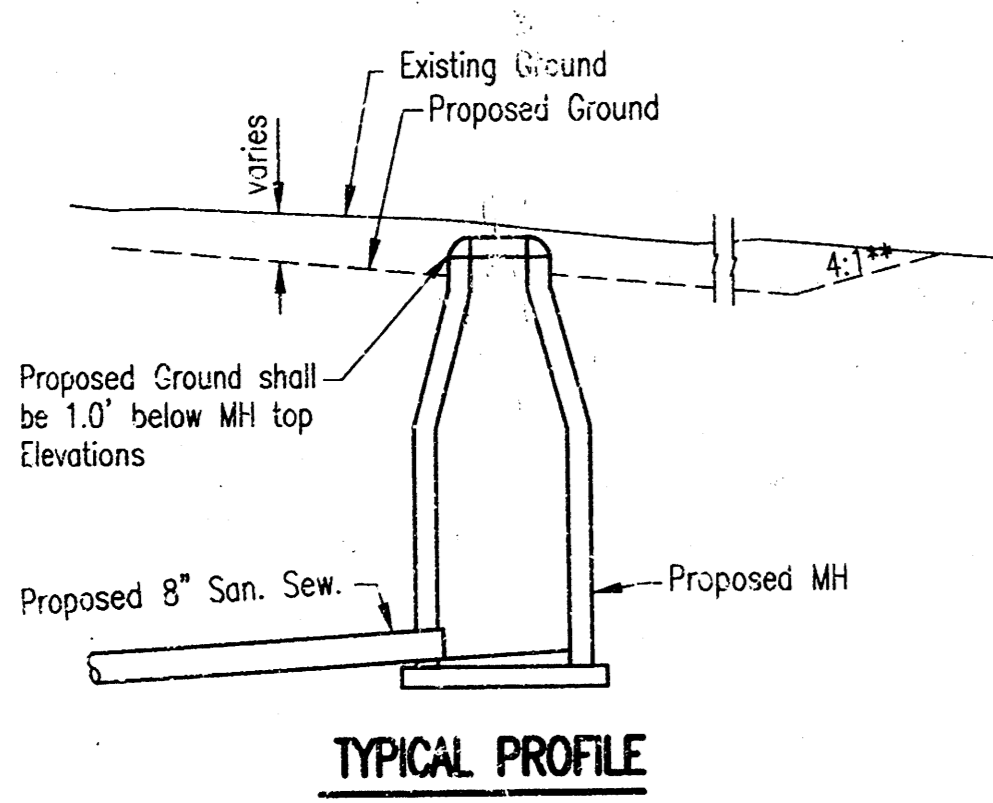
EASEMENT GRADING DETAILS

- = AREAS TO BE GRADED
- H.P. = HIGH POINT
- M.E. = MATCH EXISTING

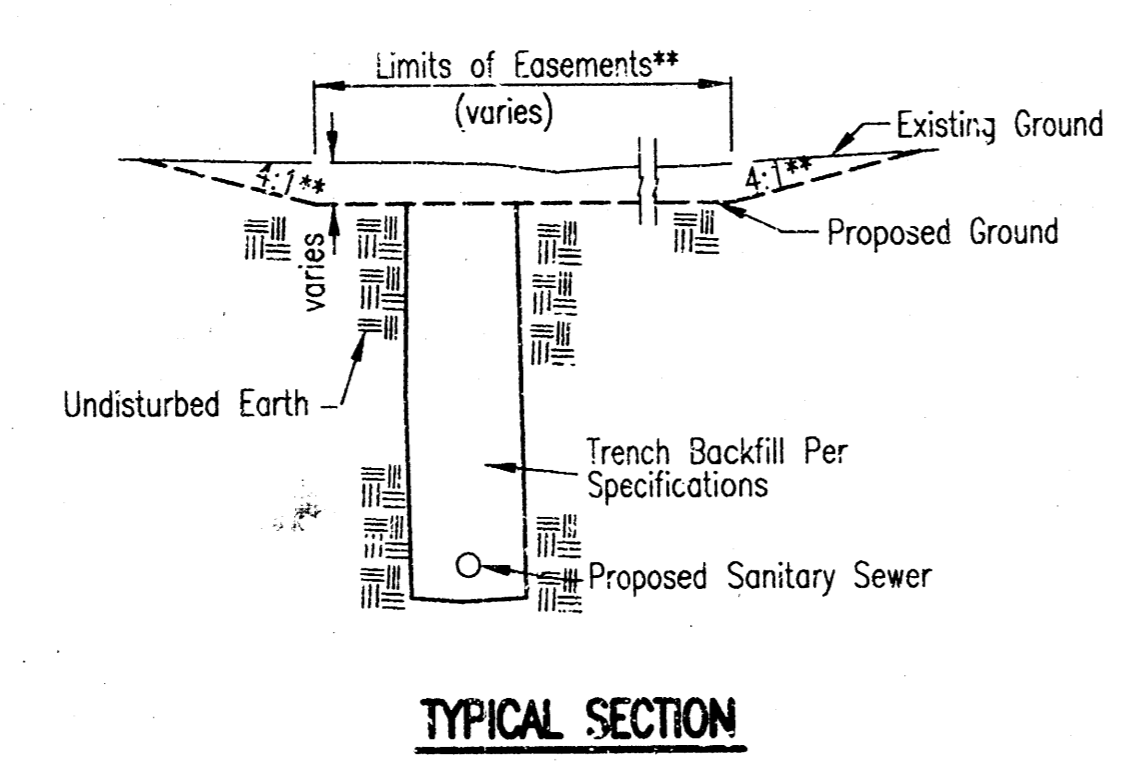
**Graded widths and slopes may vary as approved by the Engineer to minimize conflict with existing trees.

Easement Grading will be bid on a lump sum basis for grading the easements to the profile and elevations shown on the Easement Grading Plan (this sheet). Approximate quantities of earthwork for easement grading are shown below. These approximate quantities are given for information only. The Contractor should verify the quantities when preparing the proposal.

Cut 1250 C.Y. (Approximate)
 Fill 0 C.Y. (Approximate)

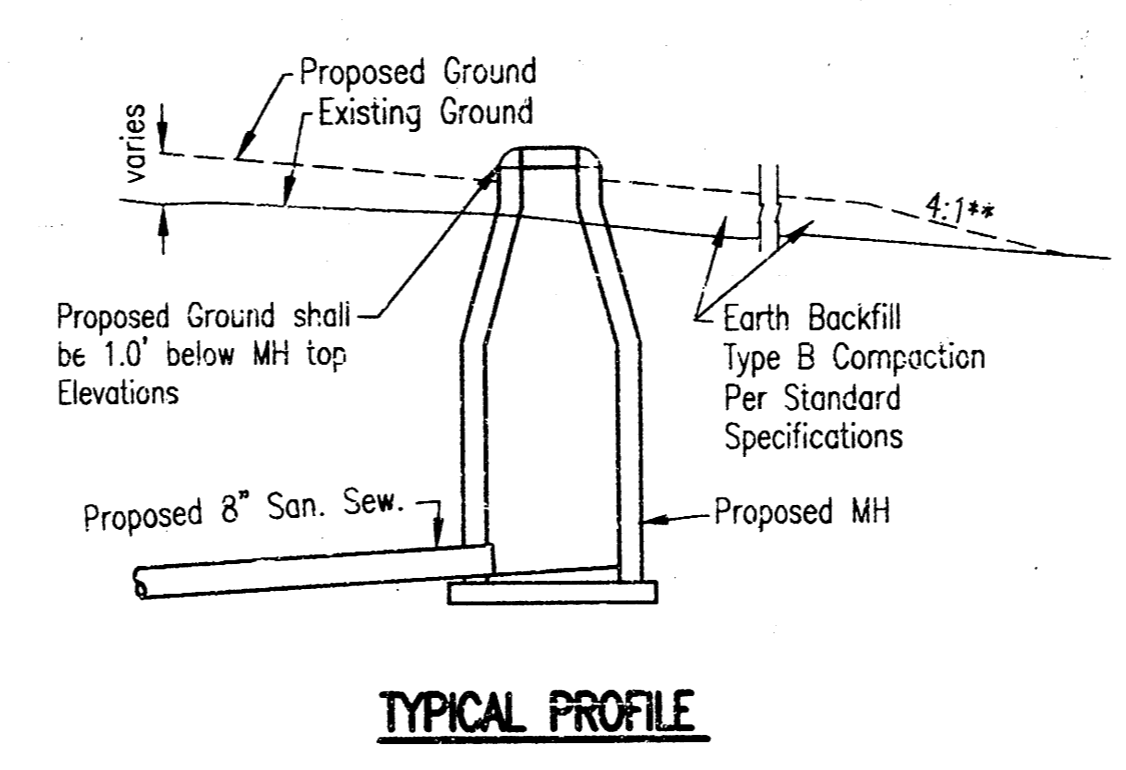


TYPICAL PROFILE

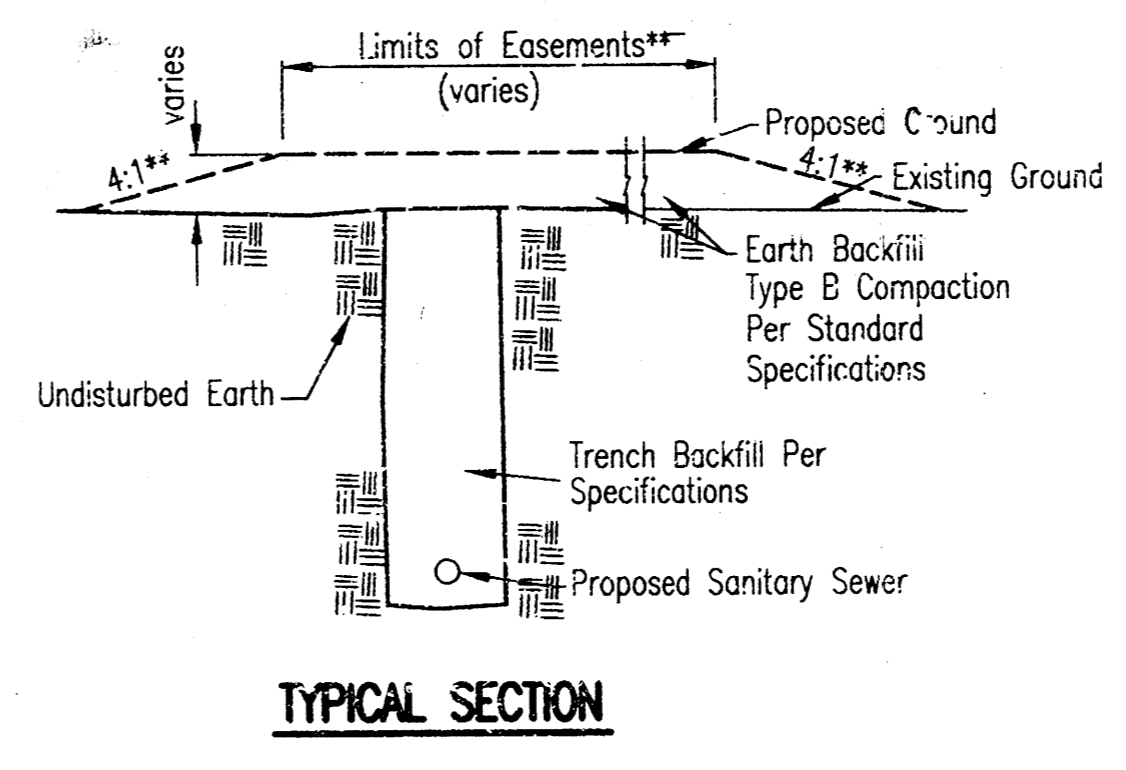


TYPICAL SECTION

"CUT" SITUATIONS



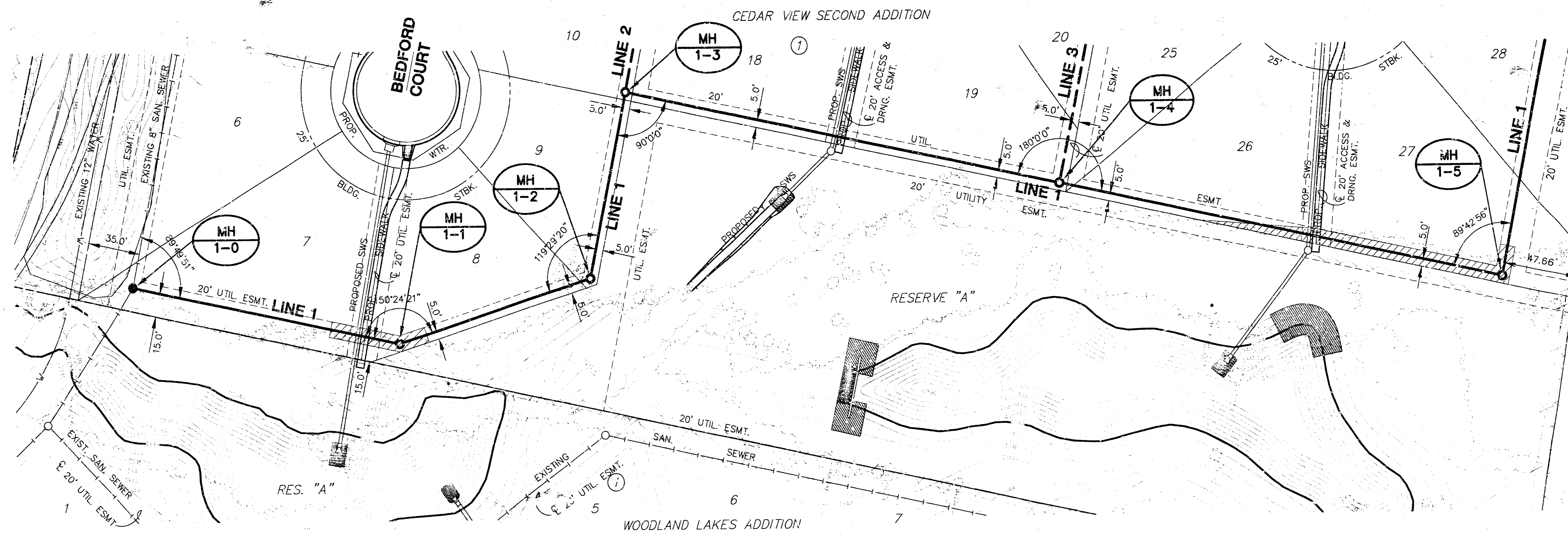
TYPICAL PROFILE



TYPICAL SECTION

"FILL" SITUATIONS

**CEDAR VIEW 2ND ADD.
SANITARY SEWER
PLAN & PROFILE LINE 1**

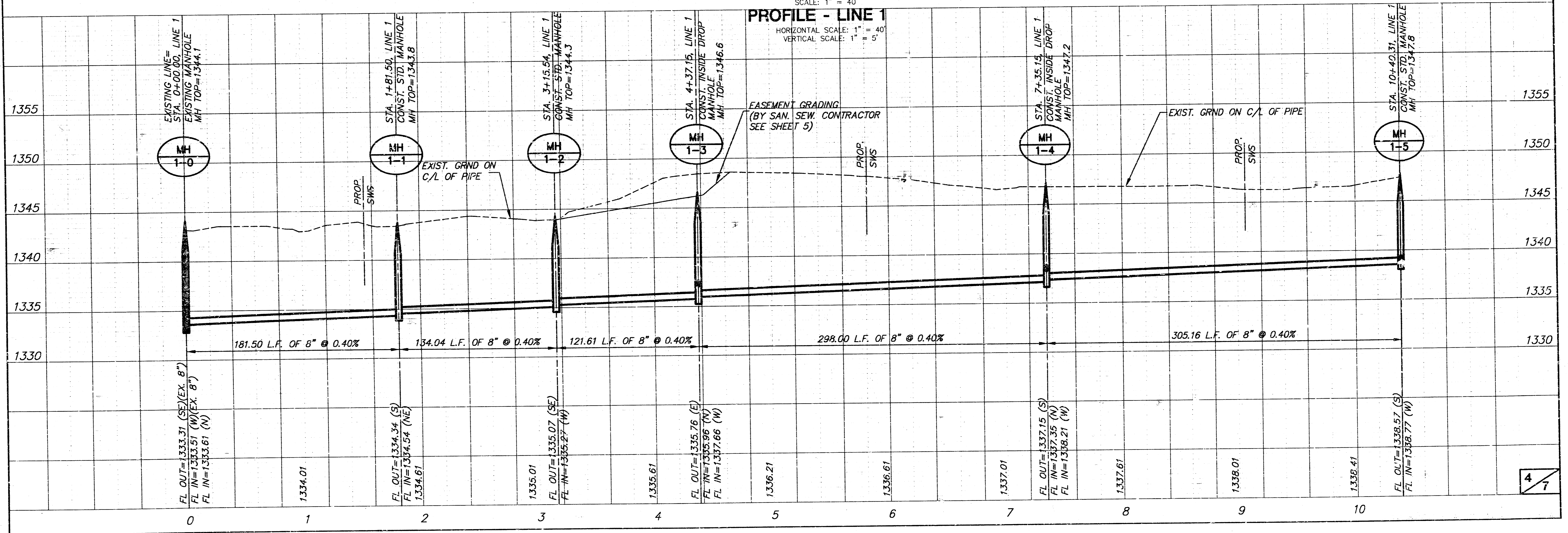


PLAN - LINE 1

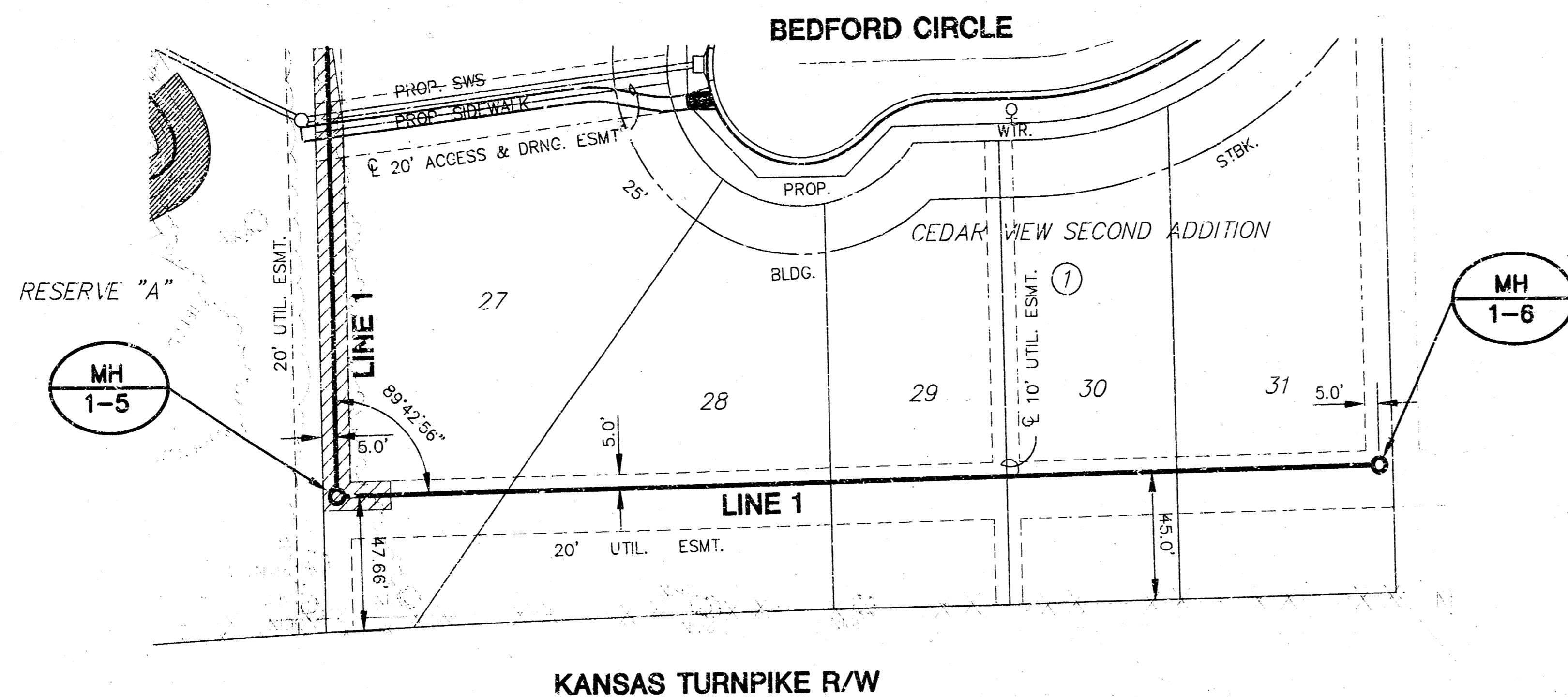
SCALE: 1" = 40'

PROFILE - LINE 1

HORIZONTAL SCALE: 1" = 40'
VERTICAL SCALE: 1" = 5'



**CEDAR VIEW 2ND ADD.
SANITARY SEWER
PLAN & PROFILE LINE 1 & 2**

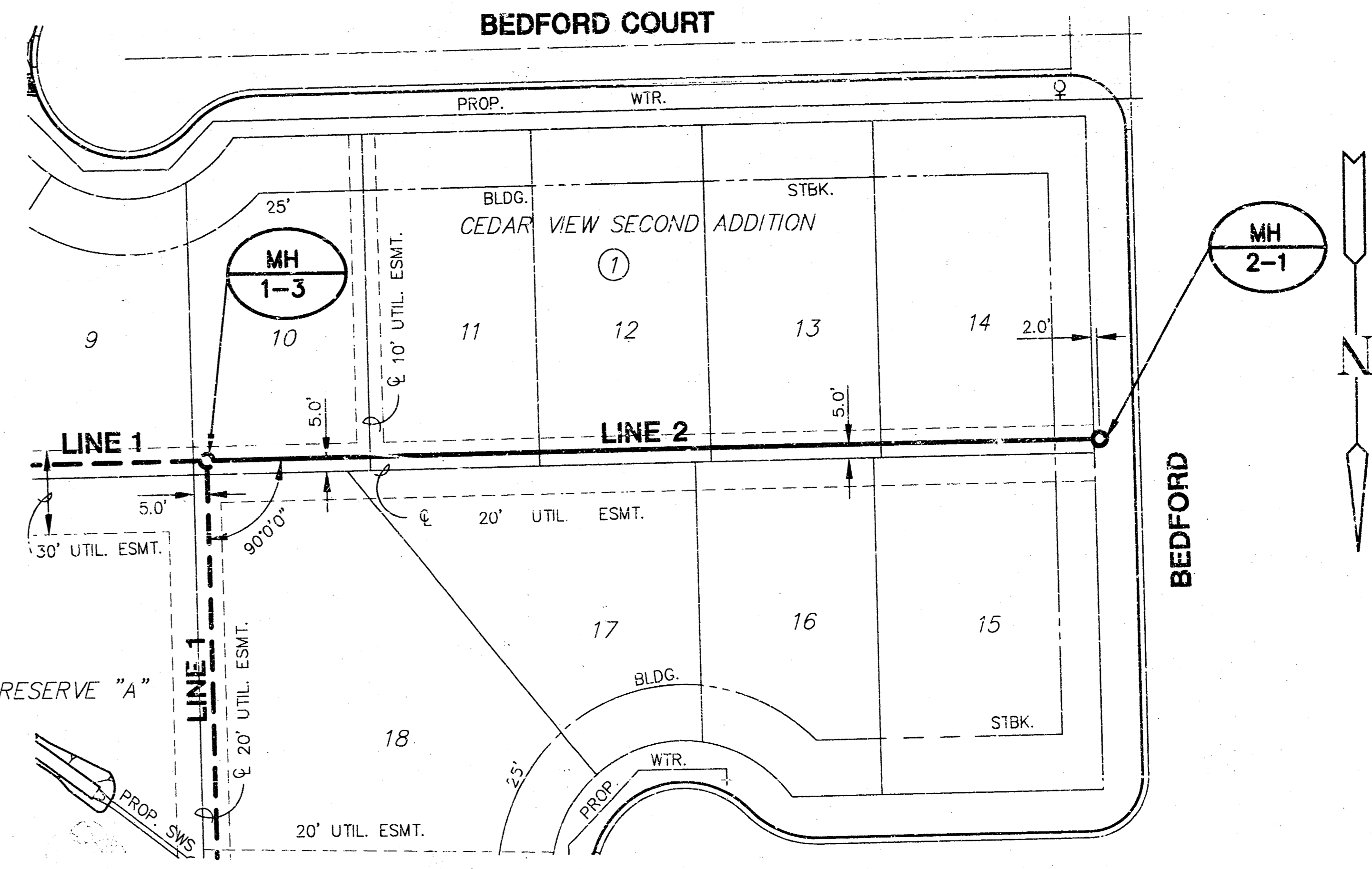
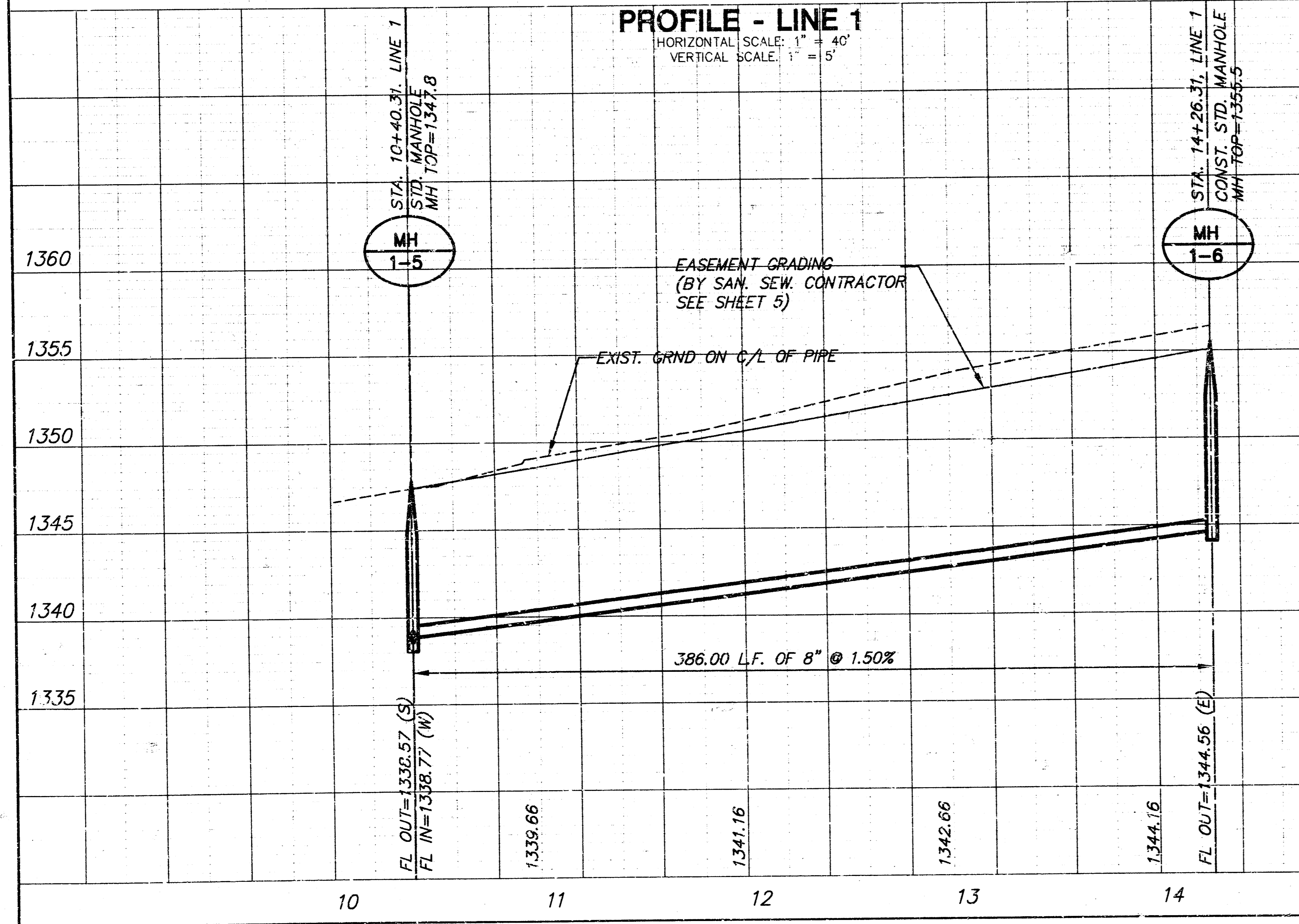


KANSAS TURNPIKE R/W

▨ = TREE REMOVAL

PLAN - LINE 1
SCALE: 1" = 40'

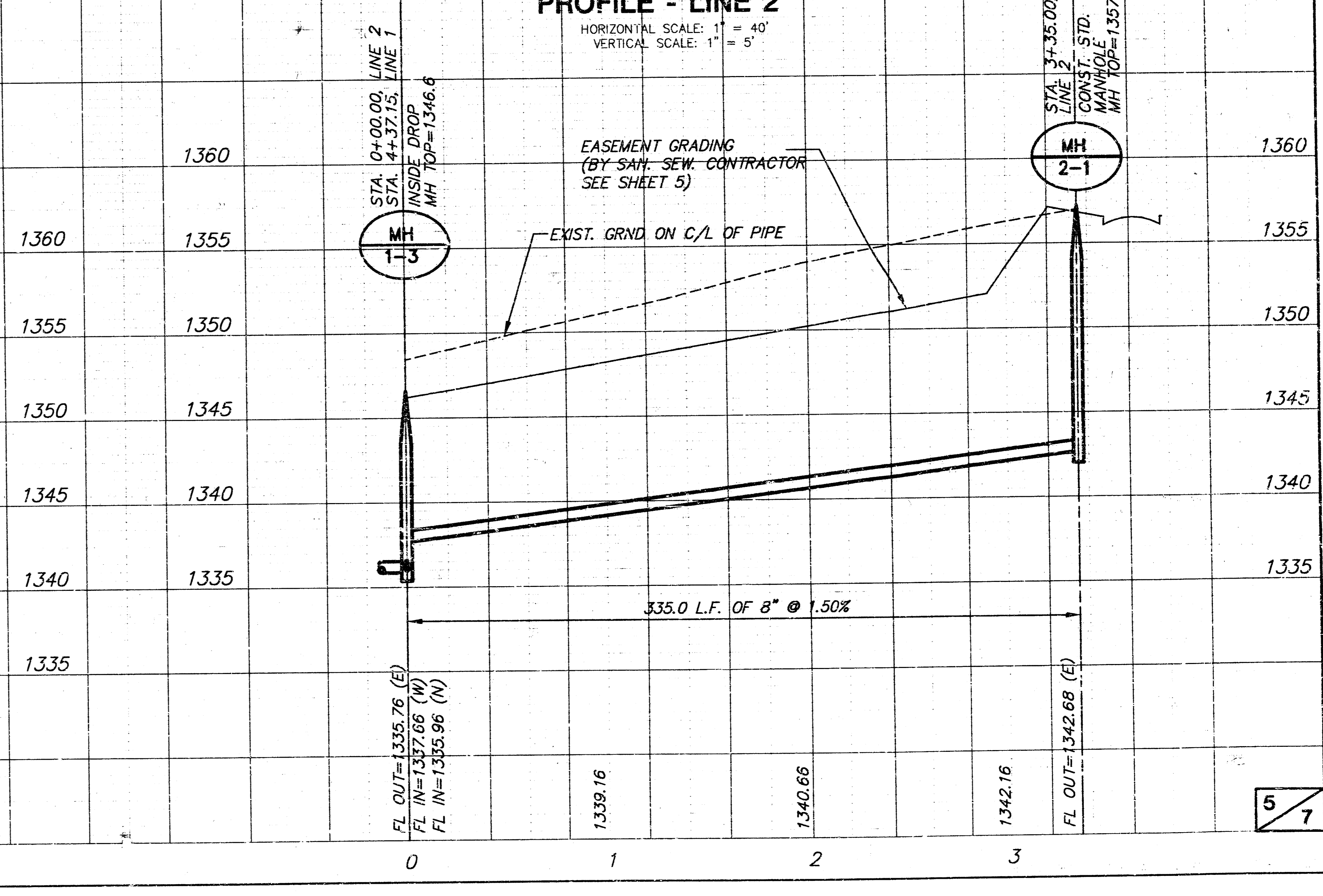
PROFILE - LINE 1
HORIZONTAL SCALE: 1" = 40'
VERTICAL SCALE: 1" = 5'



BEDFORD COURT

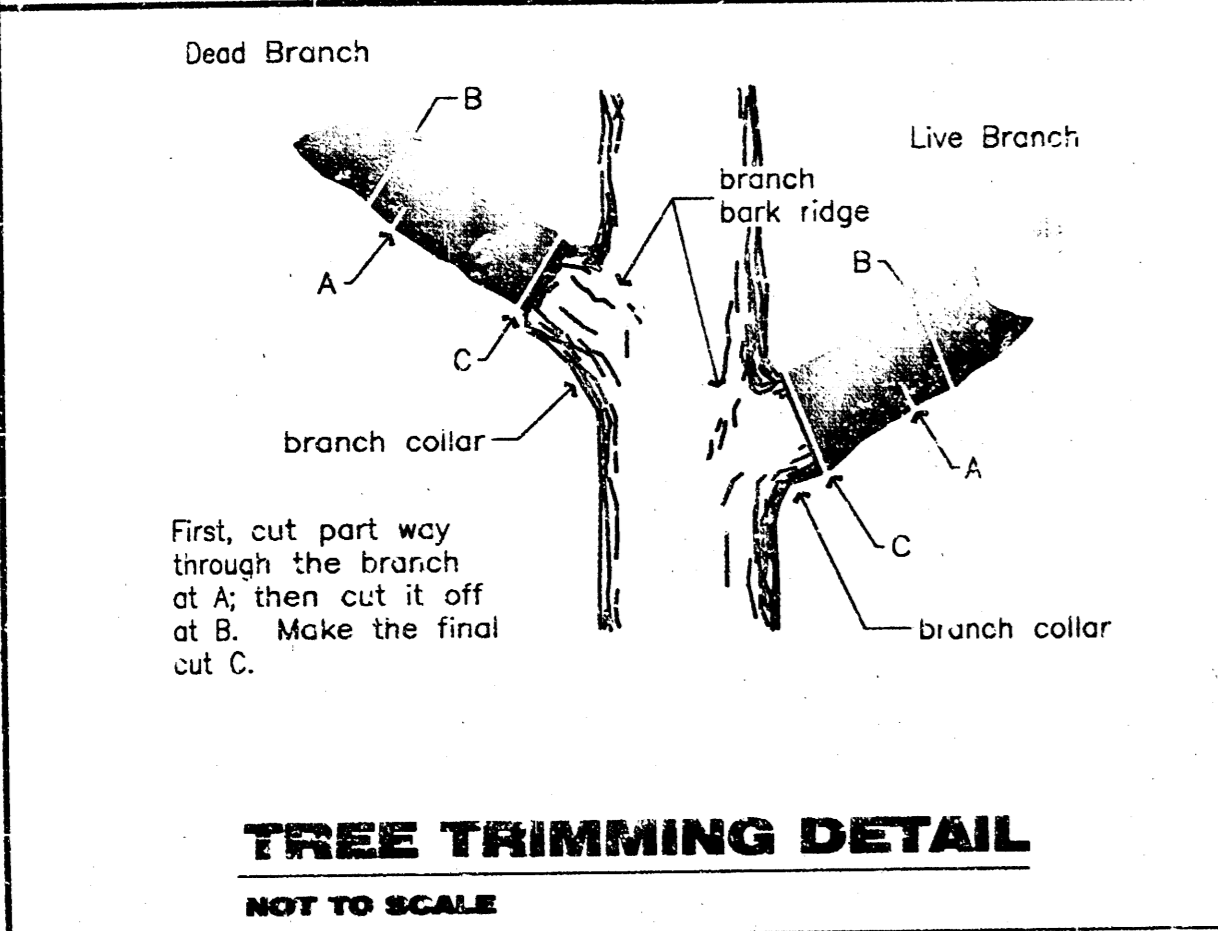
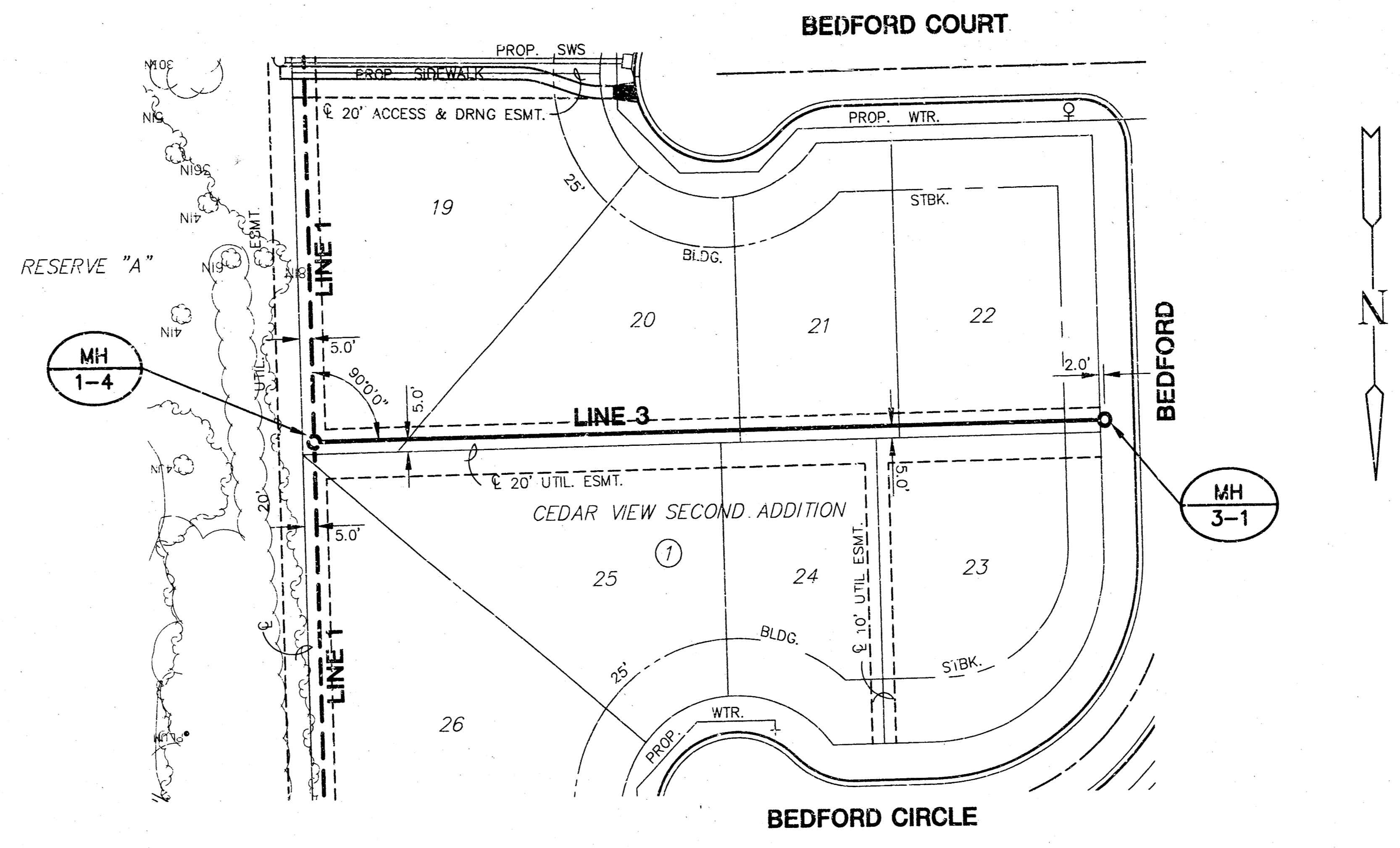
PLAN - LINE 2
SCALE: 1" = 40'

PROFILE - LINE 2
HORIZONTAL SCALE: 1" = 40'
VERTICAL SCALE: 1" = 5'



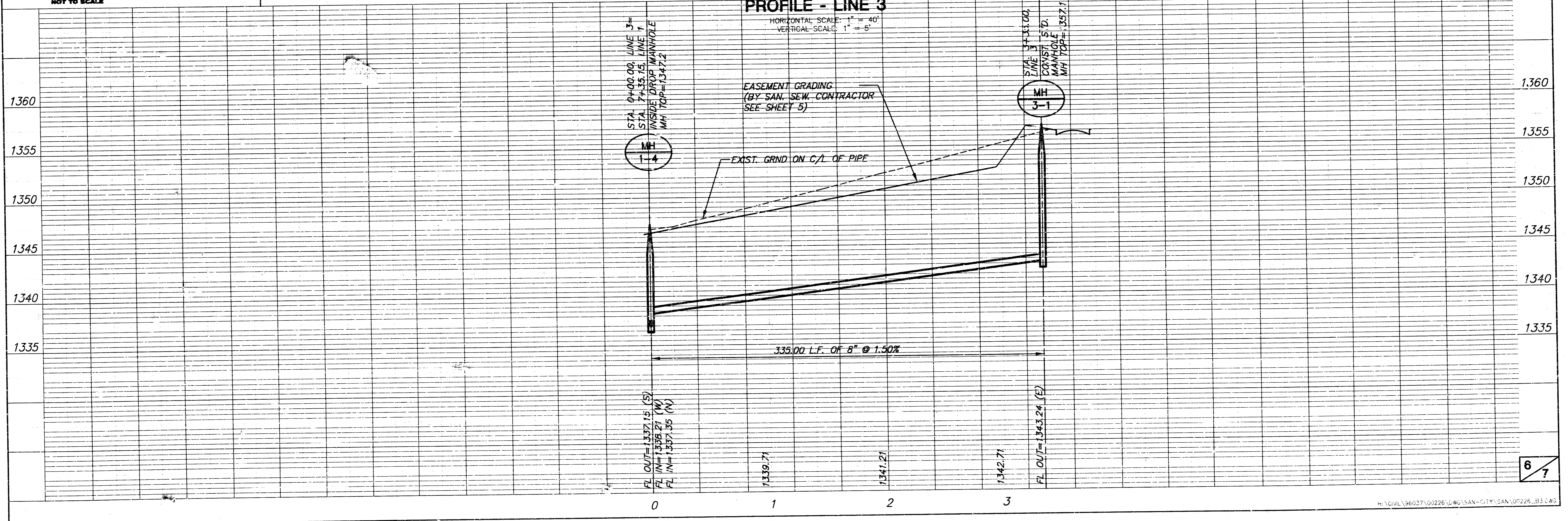
5/7

**CEDAR VIEW 2ND ADD.
SANITARY SEWER
PLAN & PROFILE LINE 3**



PLAN - LINE 3
SCALE: 1" = 40'

PROFILE - LINE 3
SCALE: 1" = 40'
HORIZONTAL SCALE: 1" = 40'
VERTICAL SCALE: 1" = 5'

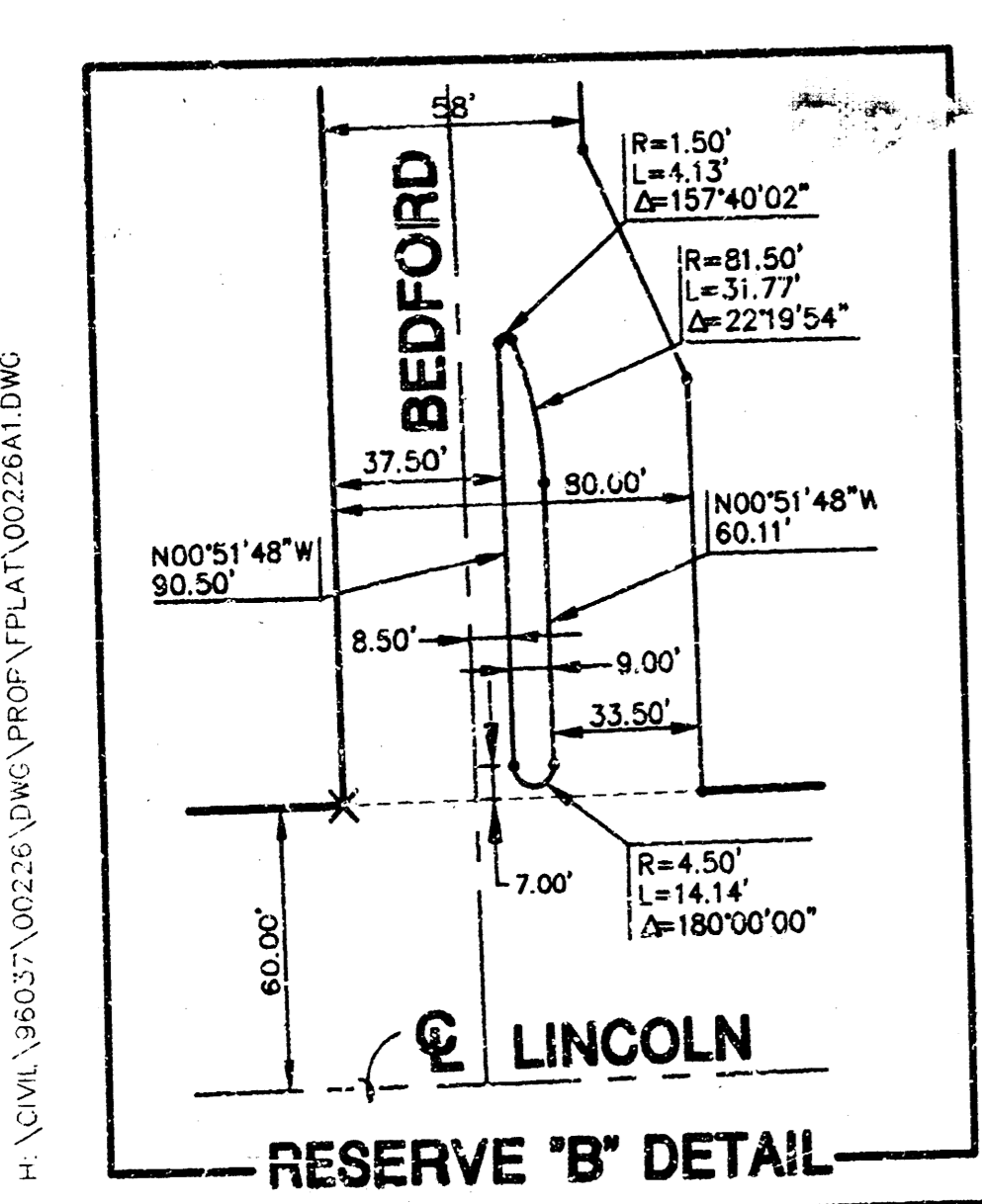
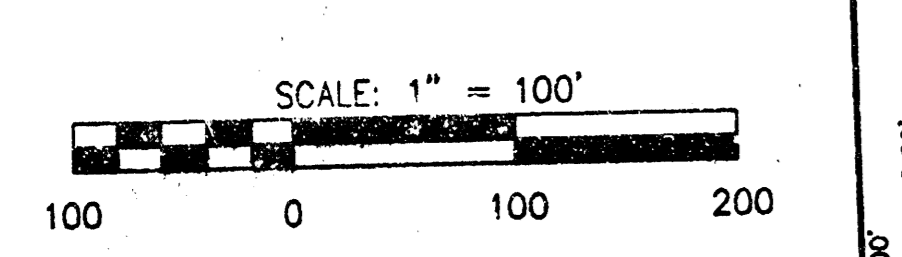
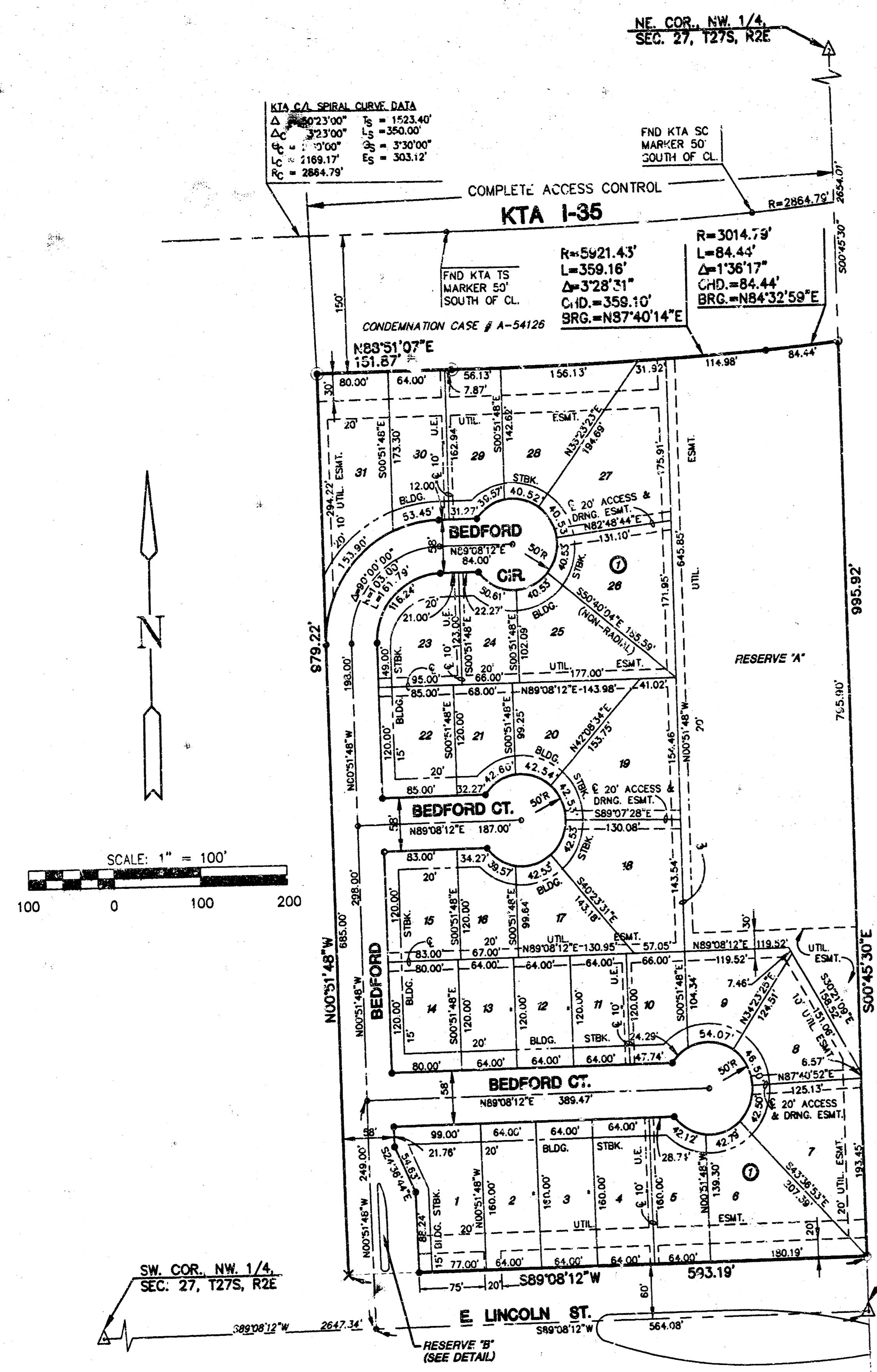


H:\CIVIL\16607\0026\WORK\SAN\SAN-CITY\00226_B3.DWG MEB F&D 21 16:11:10 2001

FINAL PLAT

CEDAR VIEW SECOND ADDITION

AN ADDITION TO WICHITA, SEDGWICK COUNTY, KANSAS



LOT	BLOCK	ELEVATION (CITY DATUM)	ELEVATION (USCS)
7	1	161.6	1349.0
8	1	161.6	1349.0
9	1	161.6	1349.0
18	1	162.6	1350.0
19	1	162.6	1350.0
26	1	162.6	1350.0
27	1	162.6	1350.0

- LEGEND**
- X = "X" CUT IN CONCRETE FOUND
 - ⊙ = 5/8" BAR/MKEC #755 FOUND
 - = 5/8" REBAR/MKEC CLS #39 FOUND
 - = 5/8" REBAR/MKEC CLS #39 SET
 - B.S. = BUILDING SETBACK
 - U.E. = UTILITY EASEMENT

I, Gregory J. Allison, a Registered Land Surveyor in the State of Kansas, do hereby certify that I have been in responsible charge of surveying and plotting of "CEDAR VIEW SECOND ADDITION", an addition to Wichita, Sedgwick County, Kansas, into lots, a block, streets and reserves the same being accurately set forth in the accompanying plat and described herein:

A tract of land lying in the Northwest Quarter, Section 27, Township 27 South, Range 2 East of the 6TH P.M., Sedgwick County, Kansas; more particularly described as follows:

A replat of Lot 3, Block 1 and Reserve "E" CEDAR VIEW ADDITION, an addition to Wichita Sedgwick County, Kansas.

All lots, blocks, streets, utility easements, drainage easements, reserves, and building setbacks within the above described property are hereby vacated and replatted by virtue of K.S.A. 12-512(b).

I hereby certify that the details of this plat are correct to the best of my knowledge and belief this ____ day of _____, 2000.

Gregory J. Allison, R.L.S. #1257
 Mid-Kansas Engineering Consultants, Inc.
 411 North Webb Road
 Wichita, Ks. 67206

Know all men by these presents that we the undersigned property owners of the land as above set forth in the Registered Land Surveyor's Certificate, have caused the same to be surveyed and platted into Lots, a Block, Streets and Reserves the same to be known as "CEDAR VIEW SECOND ADDITION", an addition to Wichita, Sedgwick County, Kansas. The streets are hereby dedicated to and for the use of the public. Easements for the construction and maintenance of public utilities, detention, and drainage, are hereby granted to the public. Reserve "A", is platted for drainage, lighting, landscaping, sidewalks, berming, open space, irrigation, utilities, and walkways. Reserve "B" is platted for utilities, lighting, landscaping, irrigation, entry monuments, and open space. Reserves shall be owned and maintained by the homeowners of the location. A drainage plan has been developed for this plat and all drainage easements right-of-way, or Reserves shall remain at established grades or as modified with the approval of the applicable City or County Engineer, and unobstructed to allow for the conveyance of storm water.

LEEWOOD HOMES, INC.
 _____, President
 Joe H. Lee, President

STATE OF KANSAS)
) ss.
 SEDGWICK COUNTY)

BE IT REMEMBERED, that on this ____ day of _____, 2000, before me the undersigned, a Notary Public in and for the County and State aforesaid, came Joe H. Lee, President, Leewood Homes, Inc., to me personally known to be the same person who executed the foregoing instrument of writing and duly acknowledged the execution of the same.

IN WITNESS WHEREOF, I have hereunto set my hand and affixed my official seal, the day and year above written.

Notary Public, Ann Ybarra
 My appointment expires: _____

This plat of "CEDAR VIEW SECOND ADDITION", has been submitted to and approved by the Wichita-Sedgwick County Metropolitan Area Planning Commission, Wichita, Kansas.
 Dated this ____ day of _____, 2000.

WICHITA-SEDGWICK COUNTY METROPOLITAN PLANNING COMMISSION
 _____ Chairman
 Francis S. Garofalo
 _____ Secretary
 Marvin S. Krout

Consent is hereby given for the formation of a SANITARY SEWER DISTRICT within the boundary of this plat by the board of Sedgwick County Commissions, as they deem necessary to provide sanitary sewer service to this area.

This plat approved and all dedications shown thereon, if any, accepted by the City Council of the City of Wichita, Kansas, this ____ day of _____, 2000.

_____, Mayor
 Bob Knight, Mayor
 _____, City Clerk
 Pat Burnett, City Clerk

Entered on transfer record this ____ day of _____, 2000.
 _____, County Clerk
 James Alford, County Clerk

STATE OF KANSAS)
) ss.
 SEDGWICK COUNTY)

This is to certify that this instrument was filed for record in the Register of Deeds office this ____ day of _____, 2000.

_____, Register of Deeds
 Bill Meek, County Clerk
 _____, Deputy
 Linda Kizzire, Deputy

Reviewed in accordance with K.S.A. 58-2005 on this ____ day of _____, 2000.

_____, Tricia L. Robello
 Tricia L. Robello, LS #1246
 Deputy County Surveyor
 Sedgwick County, Kansas