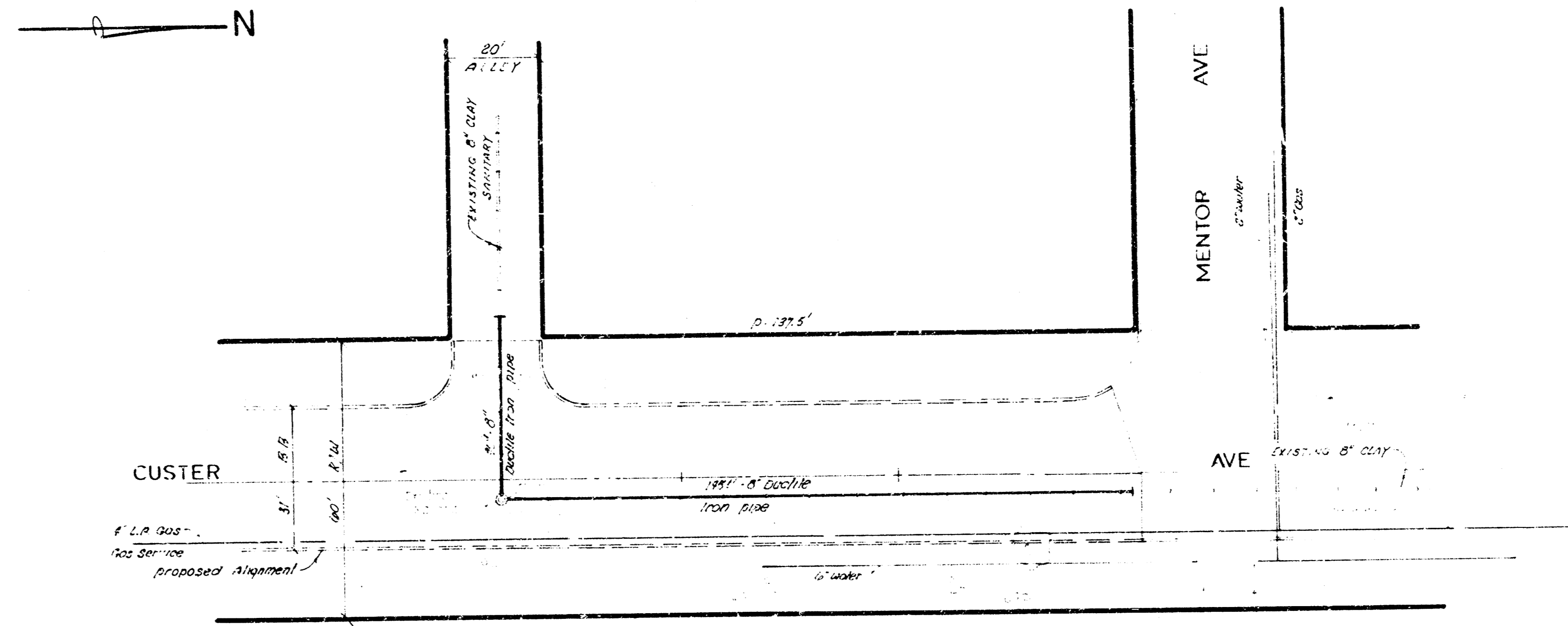
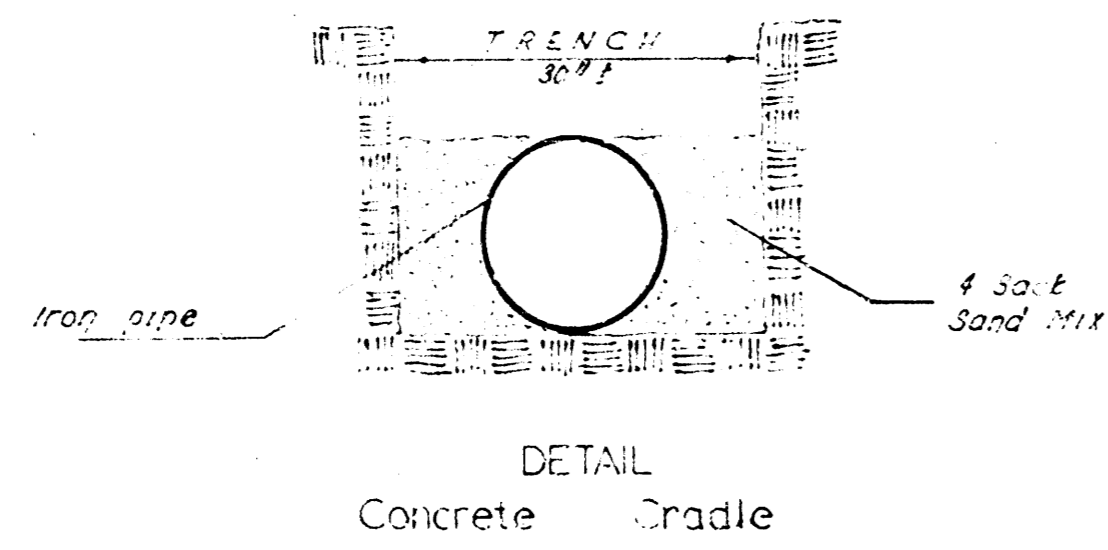


Sheet 200-100



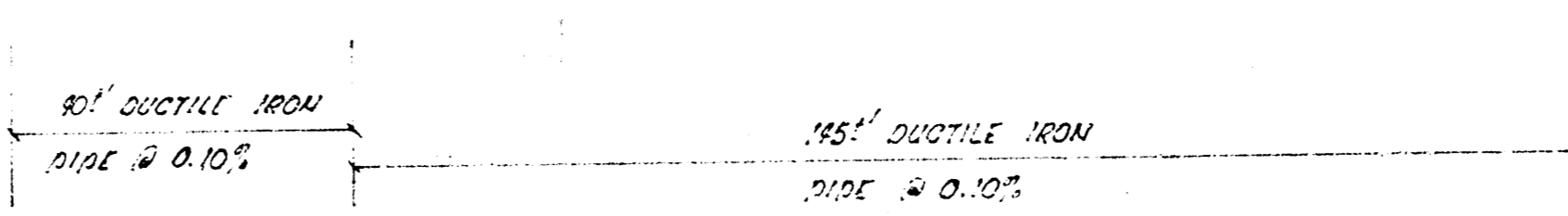
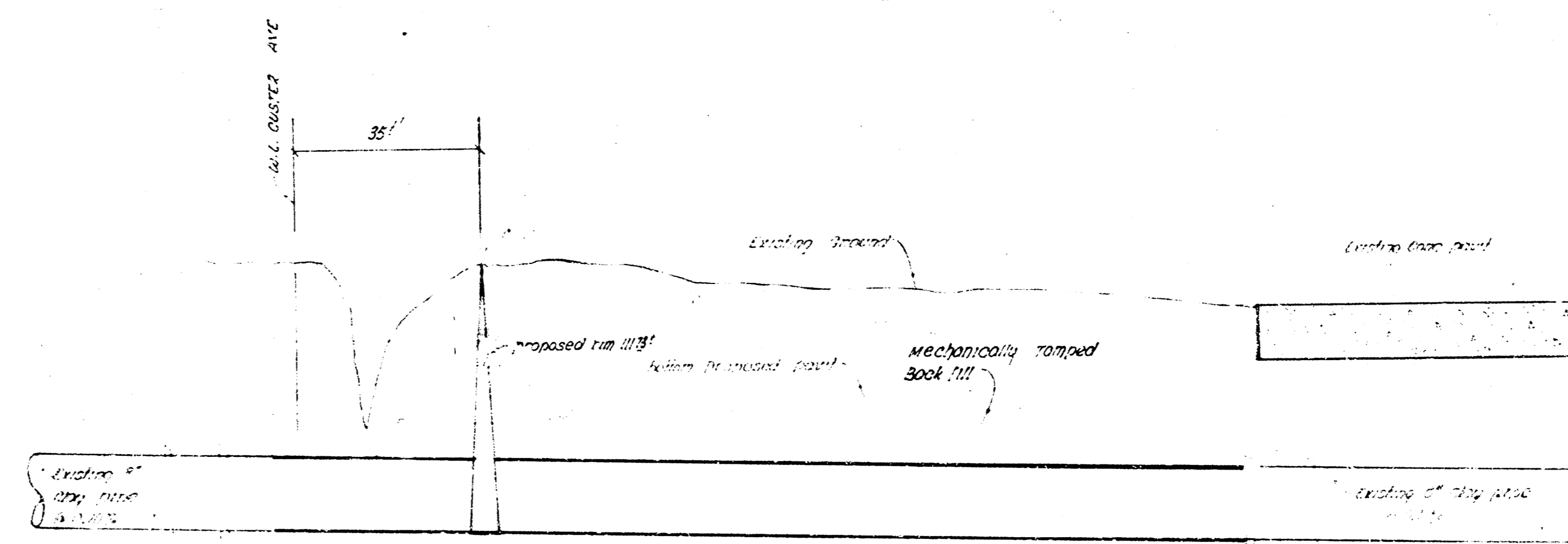
Bid price for 10' length of ductile iron pipe is to include the removal of existing 8" clay line.

NOTE: COMPACTED BACKFILL - cost included in bid price for pipe.

Bid item "ADJUST MANHOLE" shall include all material and labor to adjust existing manhole to proposed grade.

* MANHOLE CASTING to have with flange *

PLAN SCALE 1" = 20'
PROFILE 1" = 10' HORIZ
1" = 1' VERT



1000'

The existing manhole

1000'

1000'

1000'

RE: CONSTRUCTION of Sanitary Sewer
in connection with paving Custer Ave
SLU University to SLU Mentor.
CITY OF WICHITA, KANSAS
R.W. LINN CITY ENGINEER
DATE 12-27-1972 Project DAKS871042