

CITY OF WICHITA
SEDGWICK COUNTY, KANSAS
SANITARY SEWER RECONSTRUCTION AT MARKET STREET BRIDGE
ACROSS WEST DRAIN OF CHISHOLM CREEK
PROJECT NO. 468-76-245-81227-000-000-001

1983

INDEX OF SHEETS

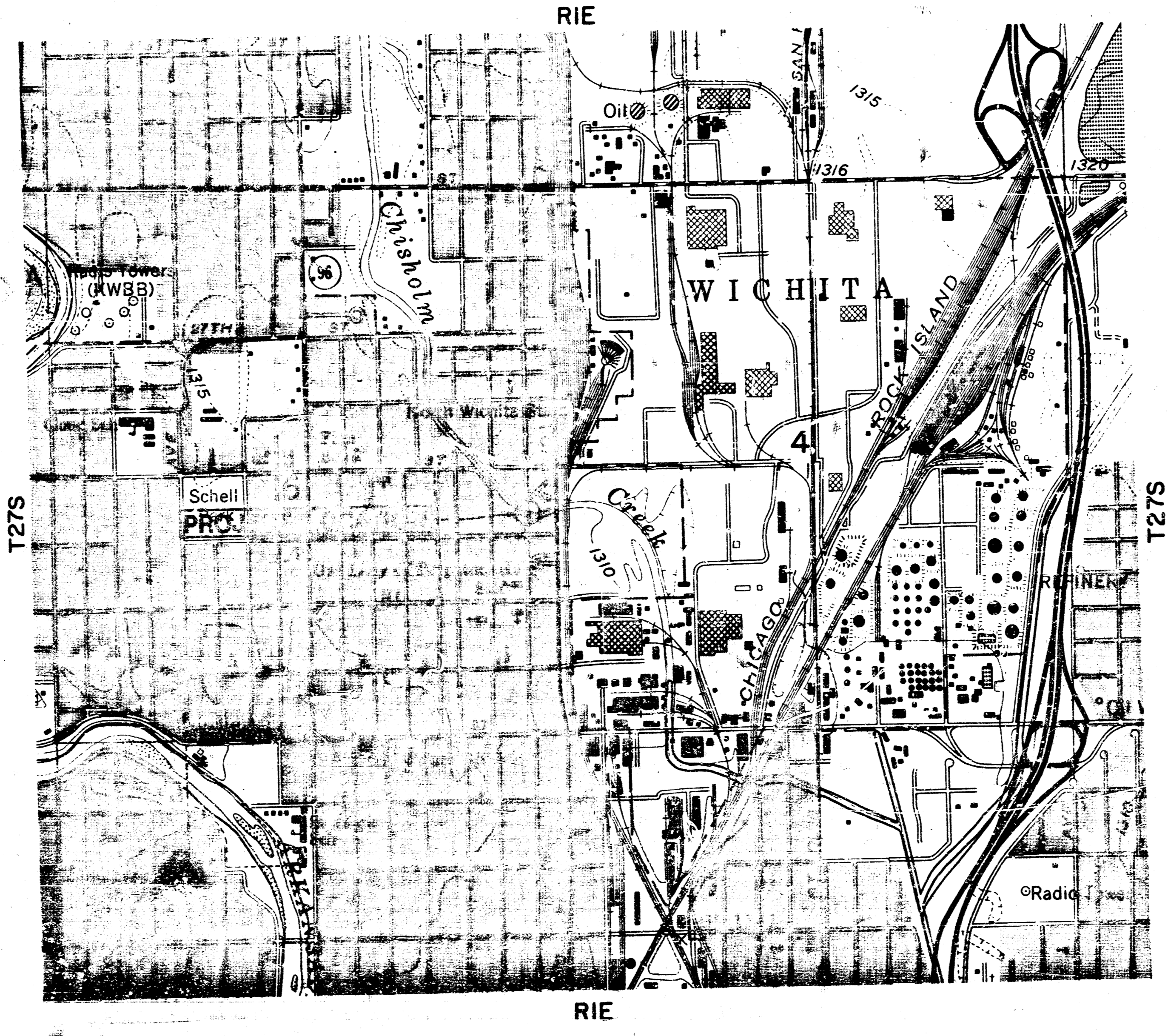
SHEET	TITLE SHEET
1	TITLE SHEET
2	PLAN / PROFILE

*As Built
JLL
6-8-84*

GENERAL NOTES

- ALL CONSTRUCTION AND MATERIALS TO COMPLY WITH CITY OF WICHITA SPECIFICATIONS AND STANDARDS.
- ALL ELEVATIONS SHOWN ARE CITY OF WICHITA DATUM (USGS-1187.4 = CITY DATUM).
- THE CONTRACTOR SHALL LIMIT THE EXTENT OF TRENCH TO REMAIN OPEN OVER-NIGHTS AND WEEKENDS TO LESS THAN 50 FEET.
- AT LEAST 24 HOURS PRIOR TO BEGINNING EXCAVATION (EXCLUDING WEEKENDS AND HOLIDAYS), THE CONTRACTOR SHALL CONTACT THE UTILITY LOCATION SERVICE "KAN-U-DIG-IT AT (316) 267-2889 TO REQUEST THE FOLLOWING UTILITY COMPANIES TO LOCATE ANY EXISTING LINES WITHIN THE PROJECT AREA: GAS SERVICE COMPANY, K.S.B.E., SOUTHWESTERN BELL TELEPHONE COMPANY, THE WICHITA WATER DEPARTMENT, AND AIR CAPITAL CABLEVISION. THE CONTRACTOR SHALL ALSO CALL THE UTILITIES LISTED BELOW AT LEAST 72 HOURS PRIOR TO BEGINNING EXCAVATING (EXCLUDING WEEKENDS AND HOLIDAYS) TO REQUEST LOCATION OF EXISTING UTILITIES WITHIN THE PROJECT AREA.

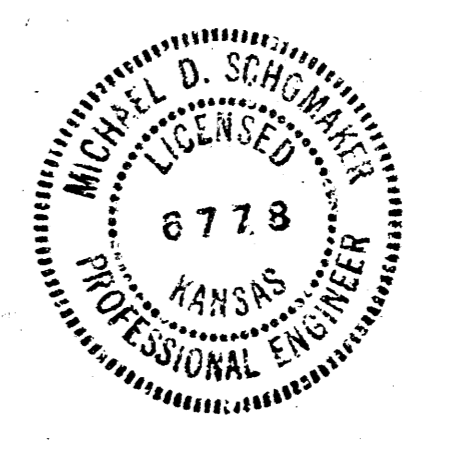
 ARKLA GAS COMPANY
 1630 SOUTH BAEHR
 WICHITA, KANSAS 67209
 (316) 942-8350
 MR. HERSHEL RUNION
- WHERE REMOVAL OF EXISTING FENCES PARALLEL TO THE CONSTRUCTION IS DEEMED NECESSARY BY THE CONTRACTOR, THE CONTRACTOR SHALL COORDINATE REMOVAL WITH THE ENGINEER, REMOVAL AND RESETTING OF FENCES SHALL NOT BE PAID FOR SEPARATELY, BUT SHALL BE CONSIDERED AS SUBSIDIARY TO THE OTHER ITEMS OF WORK.
- TREES REMOVED, TREE TRIMMINGS, FENCES AND OTHER DEBRIS SHALL BE HAULED FROM THE SITE BY THE CONTRACTOR AND WASTED AS DIRECTED BY THE ENGINEER AT NO ADDITIONAL COST TO THE OWNER.
- THE CONTRACTOR SHALL RESTORE ALL DITCHES, SWALES, ROAD SHOULDERS, ENTRANCES, AND BANK LINES TO THEIR ORIGINAL SLOPES AND GRADES EXCEPT WHERE INDICATED OTHERWISE IN THE PLANS.
- THE CONTRACTOR SHALL BE RESPONSIBLE FOR MAINTAINING CONTINUOUS FLOW OF SEWAGE THROUGH CONSTRUCTION. CONTRACTOR'S PROPOSED METHOD FOR MAINTAINING SEWAGE FLOW SHALL BE APPROVED BY THE ENGINEER. CONTRACTOR MAY CONSTRUCT ADDITIONAL MANHOLES TO FACILITATE MAINTAINING SEWAGE FLOW. TYPE AND LOCATION OF EXTRA MANHOLES TO FACILITATE HANDLING OF SEWAGE SHALL BE APPROVED BY THE ENGINEER. COST OF MAINTAINING FLOW OF SEWAGE THROUGH CONSTRUCTION WILL NOT BE PAID FOR DIRECTLY AND THIS COST SHALL BE CONSIDERED AS SUBSIDIARY TO THE OTHER ITEMS OF WORK. NO PAYMENT WILL BE MADE FOR EXTRA MANHOLES CONSTRUCTED BY THE CONTRACTOR TO FACILITATE HANDLING SEWAGE THROUGH CONSTRUCTION AS THIS COST SHALL BE CONSIDERED SUBSIDIARY TO THE OTHER ITEMS OF WORK.
- THE CONTRACTOR SHALL BE RESPONSIBLE FOR PRESERVING PROPERTY IRONS. THE CONTRACTOR SHALL BE REQUIRED TO RE-ESTABLISH ANY PROPERTY IRONS WHICH ARE DAMAGED OR DESTROYED BY HIS CONSTRUCTION OPERATIONS. SUCH IRONS SHALL BE RE-ESTABLISHED BY A LICENSED LAND SURVEYOR OR A LICENSED PROFESSIONAL ENGINEER IN ACCORDANCE WITH STATE LAWS. ALL COST FOR THIS WORK SHALL BE SUBSIDIARY TO THE OTHER ITEMS OF WORK.
- THE CONTRACTOR SHALL DEPOSIT ALL EXCESS EXCAVATED SOIL WITHIN THE BOUNDARIES PROVIDED BY THE DEVELOPER.
- ALL SANITARY SEWER PIPE SHALL BE DUCTILE IRON PIPE WITH LINER.



CONVENTIONAL SIGNS

SECTION LINE	_____	_____
RIGHT-OF-WAY	_____	_____
FENCE LINE	_____	_____
CENTER LINE OF PROJECT	_____	_____
POWER POLE	_____	_____
UNGD. TEL. CABLE	_____	_____
GAS LINE	_____	_____
WATER LINE & WATER VALVE	_____	_____
STORM SEWER & MANHOLE	_____	_____
SAN. SEWER & MANHOLE	_____	_____
TREES	_____	_____

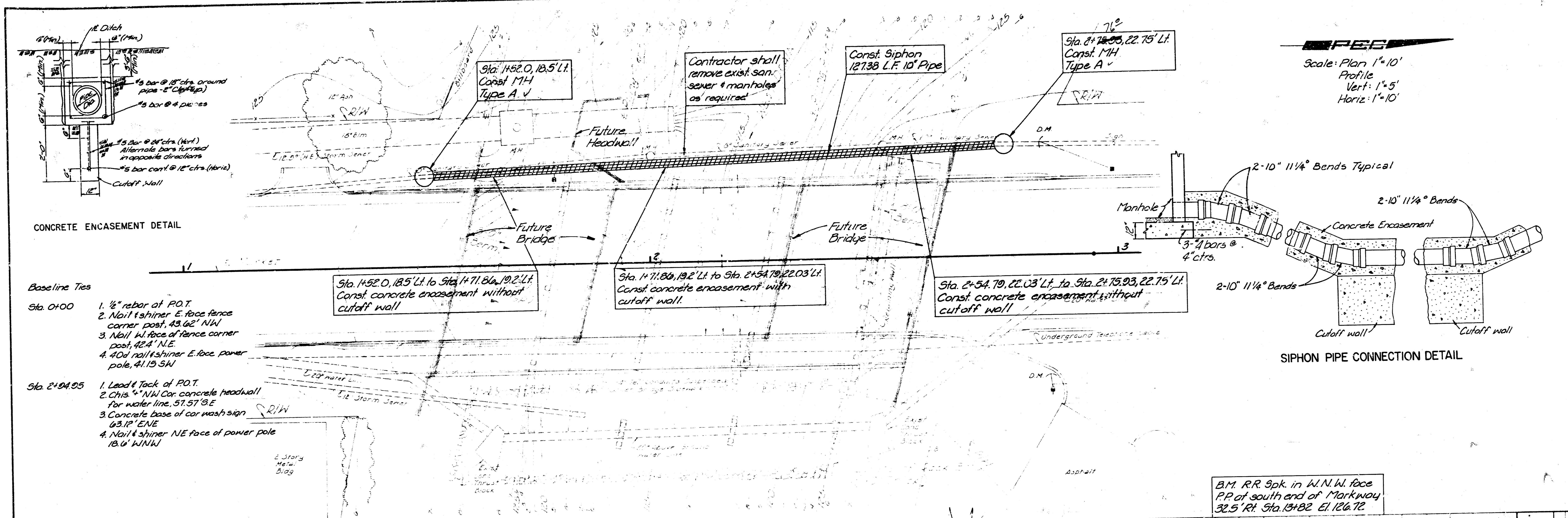
PLANS PREPARED BY
PROFESSIONAL ENGINEERING CONSULTANTS, P.A.
 ENGINEERS
 WICHITA, KANSAS



APPROVED	DATE
M. E. LINDESAK - CITY ENGINEER	
WICHITA, KANSAS	
PROJ. NO. 468-76-245-81227-000-000-001	

REVISED OCT. 20, 1983

FILMED FROM THE BEST AVAILABLE COPY



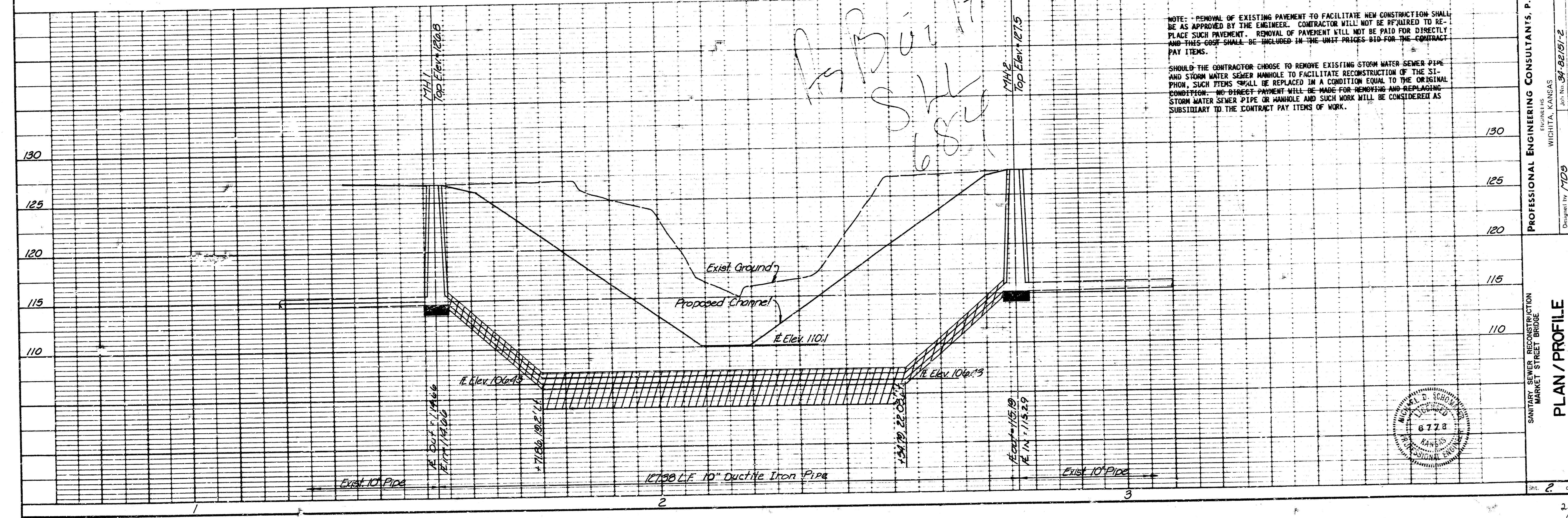
CONCRETE ENCASUREMENT DETAIL

Scale: Plan 1"=10'
 Profile 1"=5'
 Horiz. 1"=10'

SIPHON PIPE CONNECTION DETAIL

- Base line Ties
- Sta. 0+00
- 1/2" rebar of P.O.T.
 - Nail & shiner E. face fence corner post, 43.62' NW
 - Nail w/ face of fence corner post, 42.4' NE
 - 40d nail & shiner E. face power pole, 41.15 SW
- Sta. 2+94.95
- Lead & tack of P.O.T.
 - Chis 4" NW Cor. concrete headwall for water line, 57.57 SE
 - Concrete base of car wash sign 63.12' ENE
 - Nail & shiner NE face of power pole 18.6' WNW

B.M. RR Spk. in W.N.W. face P.P. of south end of Markway 32.5' Rt. Sta. 13+82 El. 126.72



NOTE: REMOVAL OF EXISTING PAVEMENT TO FACILITATE NEW CONSTRUCTION SHALL BE AS APPROVED BY THE ENGINEER. CONTRACTOR WILL NOT BE REQUIRED TO REPLACE SUCH PAVEMENT. REMOVAL OF PAVEMENT WILL NOT BE PAID FOR DIRECTLY AND THIS COST SHALL BE INCLUDED IN THE UNIT PRICES BID FOR THE CONTRACT PAY ITEMS.

SHOULD THE CONTRACTOR CHOOSE TO REMOVE EXISTING STORM WATER SEWER PIPE AND STORM WATER SEWER MANHOLE TO FACILITATE RECONSTRUCTION OF THE SIPHON, SUCH ITEMS SHALL BE REPLACED IN A CONDITION EQUAL TO THE ORIGINAL CONDITION. NO DIRECT PAYMENT WILL BE MADE FOR REMOVING AND REPLACING STORM WATER SEWER PIPE OR MANHOLE AND SUCH WORK WILL BE CONSIDERED AS SUBSIDIARY TO THE CONTRACT PAY ITEMS OF WORK.



PROFESSIONAL ENGINEERING CONSULTANTS, P.A.
 ENGINEERS
 WICHITA, KANSAS

Original by: MDS
 Drawn by: CAL
 Job No. 94-82/91-2
 Date: Jun. 1993

SANITARY SEWER RECONSTRUCTION
 MARKET STREET BRIDGE

PLAN / PROFILE

PROJECT NO. 468-76-245-8227-000-000-001

2 of 2

1 2 3 4 5

FILMED FROM THE BEST AVAILABLE COPY