

CONSTRUCTION PLANS
SANITARY SEWER EXTENSIONS
MEADOW OAKS 3RD ADDITION
 TO
THE CITY OF WICHITA, KANSAS
LATERAL 68, MAIN 8, SANITARY SEWER NUMBER 23

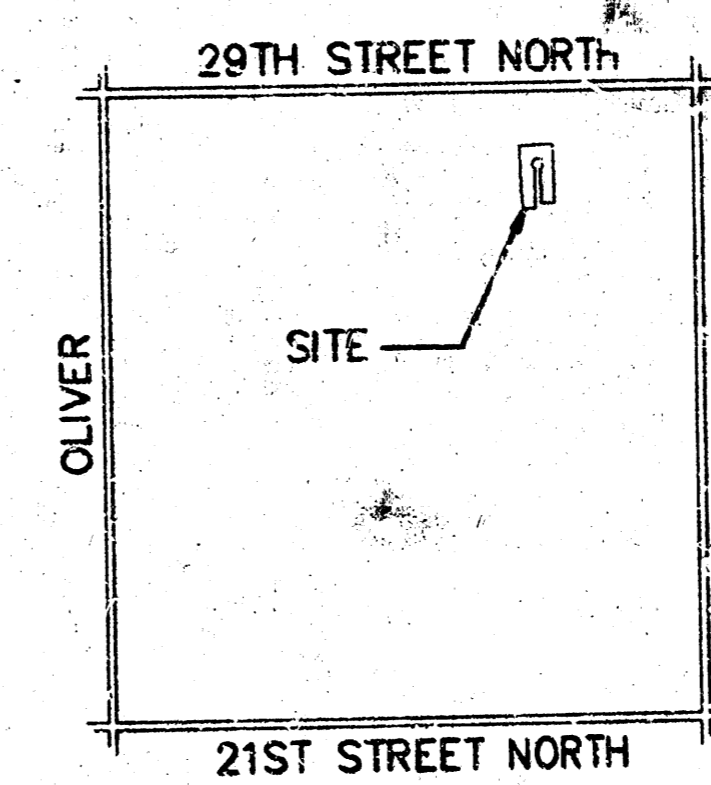
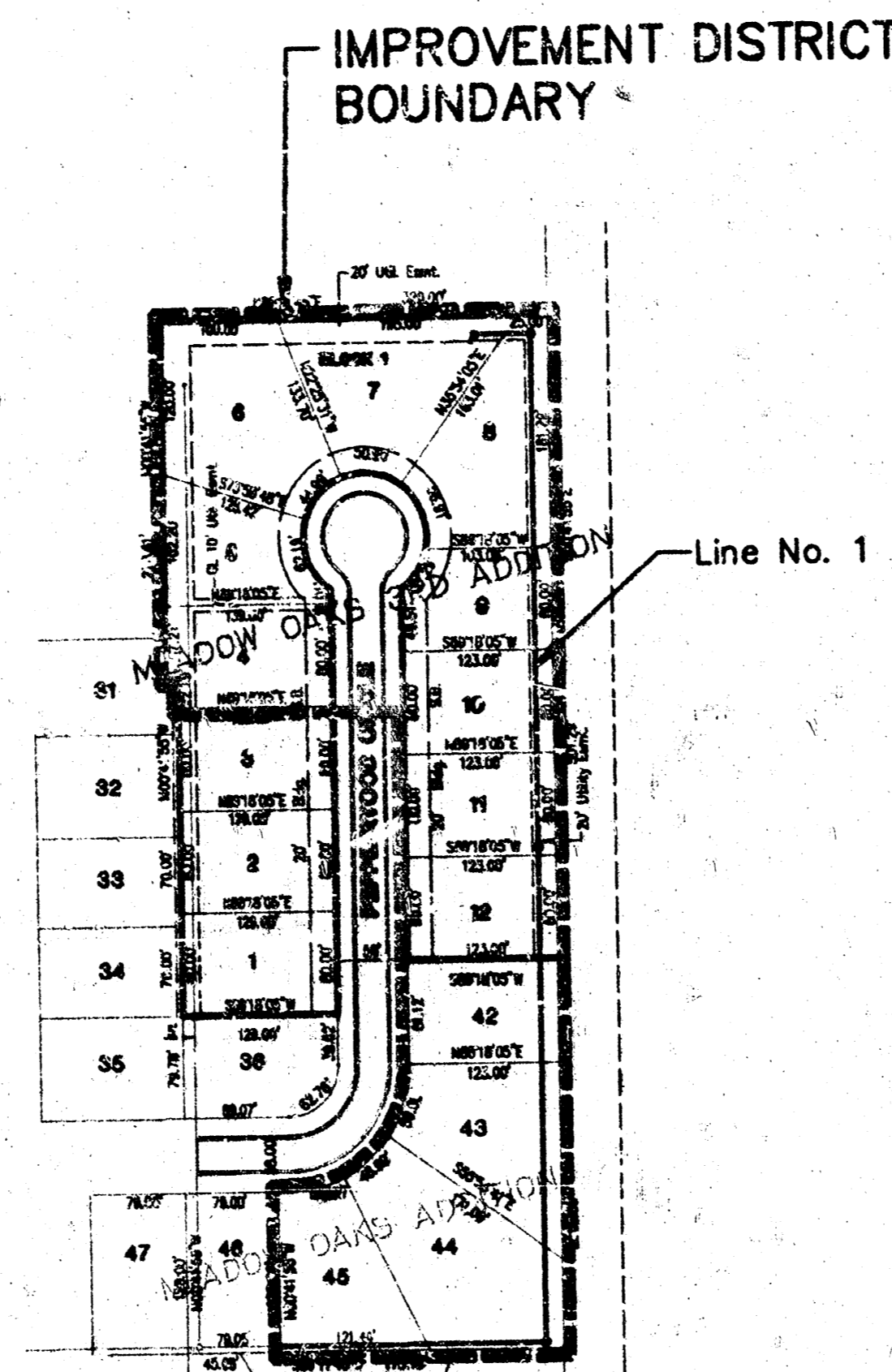
MICHAEL E. LINDEBAK, P.E. - CITY ENGINEER
 PROJECT NO. 468-82571
 INDEX CODE 742676

GENERAL NOTES:

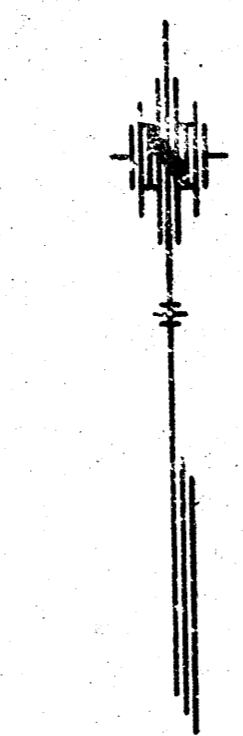
1. Existing utility lines and their location, as shown on the plans, represent the best information obtainable for design. The contractor will be required to work around existing utilities within the right-of-way which do not conflict with proposed construction.
2. Rubble from the removal of miscellaneous structures and excess excavation which is to be wasted shall be disposed of on sites to be provided by the Contractor. These sites shall be approved by the Engineer as to suitability, appearance and site location. Locations that, in the opinion of the Engineer, will leave an unsightly appearance will not be approved.

All disposal sites must be approved by the Kansas Department of Health and Environment. Material either stockpiled or disposed of in a flood plain would require a Kansas State Board of Agriculture permit. Any material dumped in waters of the United States or wetlands is subject to U.S. Corps of Engineers permitting regulations. Any material buried or stockpiled beyond approved construction limits would require additional archaeological investigations unless buried in a previously approved borrow location.

3. The Contractor shall be responsible for maintaining continuous flow of sewage through construction. Contractor's proposed method for maintaining sewage flow shall be approved by the Engineer. Cost of maintaining flow of sewage through construction will not be paid for directly and this cost shall be considered as subsidiary to the other pay items of the work.
4. The Contractor shall be responsible for preserving property irons. The Contractor will be required to re-establish any property irons which are damaged or destroyed by his construction operations. Such irons shall be re-established by a licensed land surveyor or a licensed professional engineer in accordance with state laws.
5. Trees and shrubs in public right-of-way which are in direct conflict with proposed new construction shall be removed by the Contractor with the Engineer's approval. Trees and shrubs which are not in direct conflict with the proposed new construction shall be saved and protected from damage.
6. Contractor shall vacuum test all manholes according to the City of Wichita standard specifications.
7. Provide temporary rye grass seeding on all disturbed areas at 20 lbs./acre. Prepare ground before seeding per city spec.



LOCATION MAP
No Scale



Scale 1" = 150'

INDEX

TITLE SHEET	SHEET 1
LINE NO. 1	SHEET 2
EASEMENT GRADING PLAN	SHEET 3
TYPE "P" MANHOLE	SHEET 4
TYPE "C" MANHOLE	SHEET 5
COORDINATE POINTS LIST	SHEET 6
MEADOW OAKS 3RD ADDITION PLAT	SHEET 7

BENCH MARKS

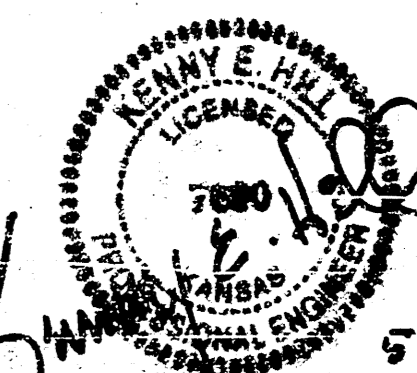
(City of Wichita Datum)

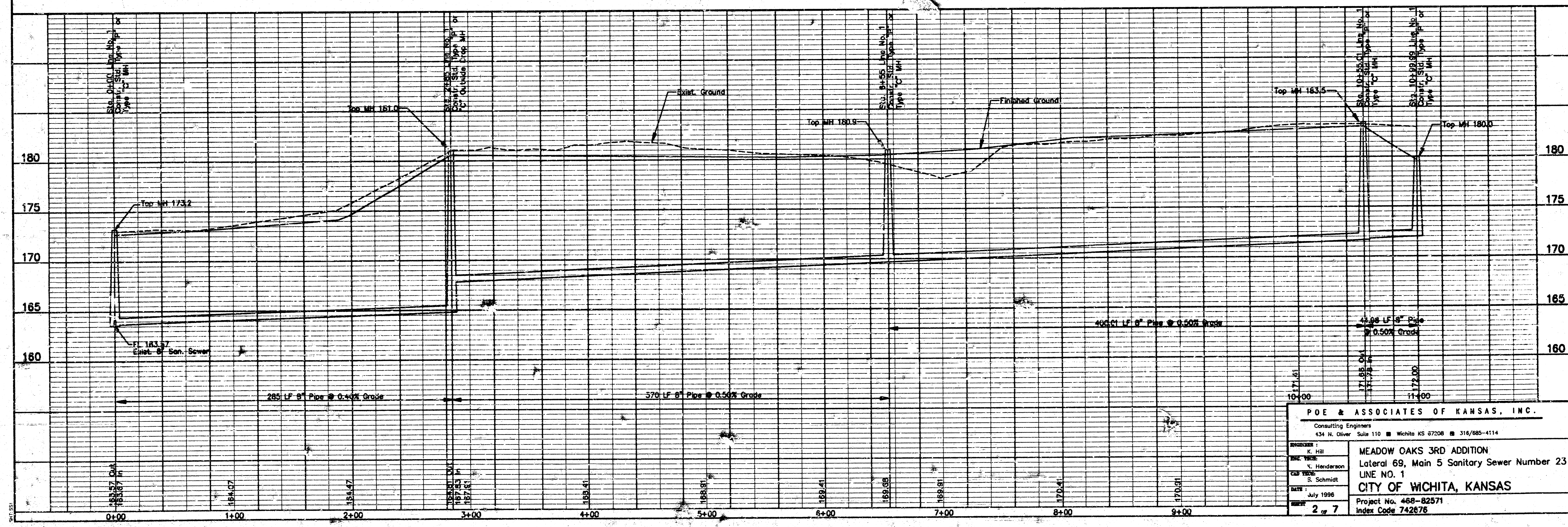
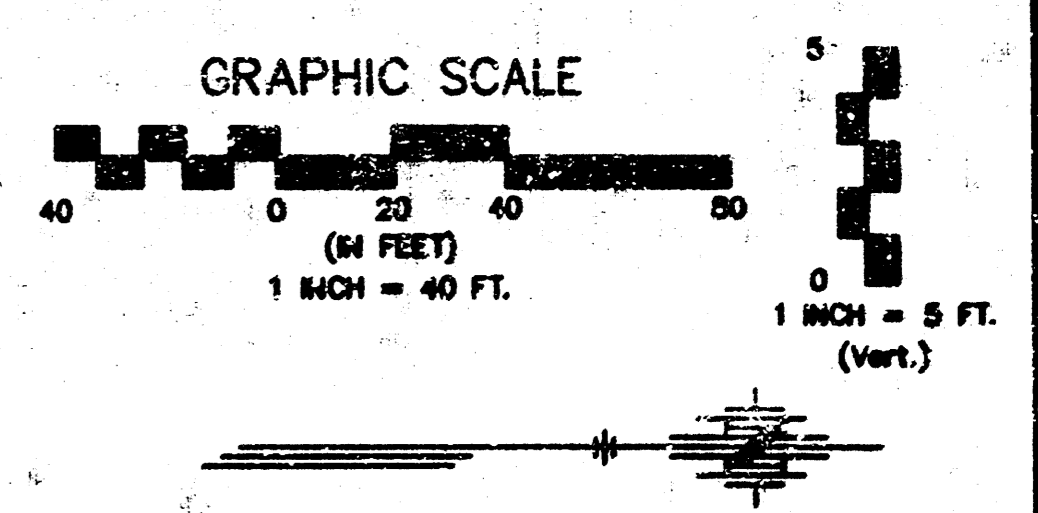
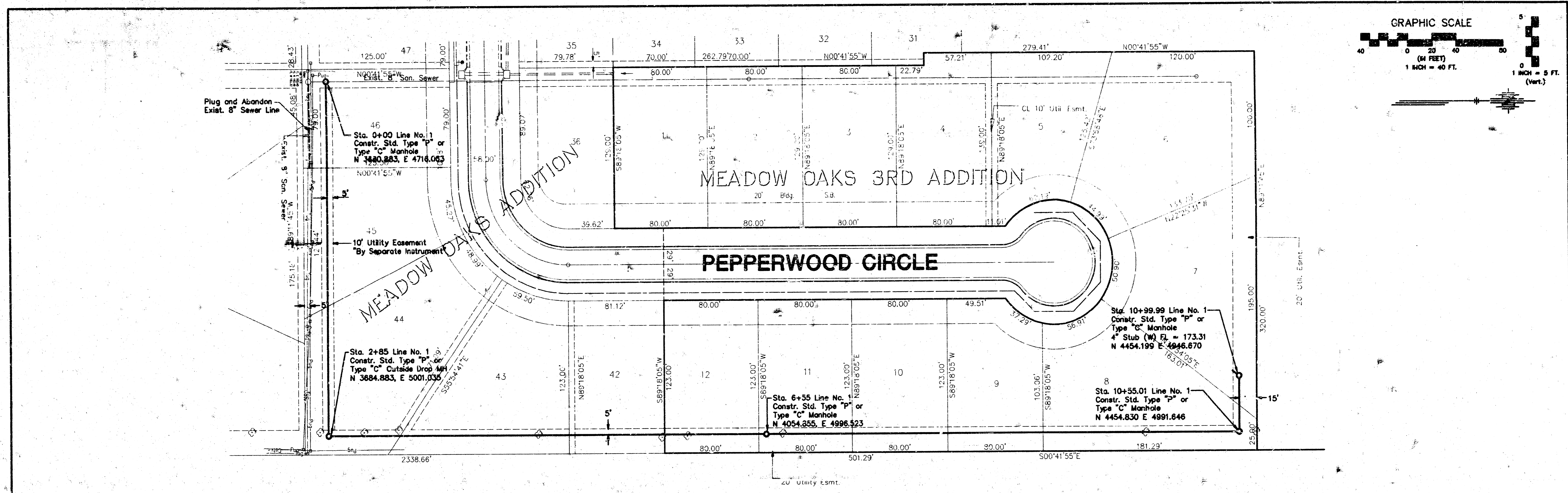
1. City of Wichita std. BM disc at 29th & Edgemoor. 5.5' E. & 37' N. of 1/4 Section Corner. Elev. 172.38
2. City of Wichita std. BM disc at 29th Street N. & Oliver. 39' N. & 33' E. of Centerline Both. Elev. 159.65
3. cut on concrete curb, S. end of SW return @ 28th Street & Meadow Oaks. Elev. 173.09

MAY 1996

PLANS PREPARED
 BY
 POE & ASSOCIATES OF KANSAS, INC.

Consulting Engineers
 434 N. Oliver Suite 110 Wichita KS 67208 316/685-4114

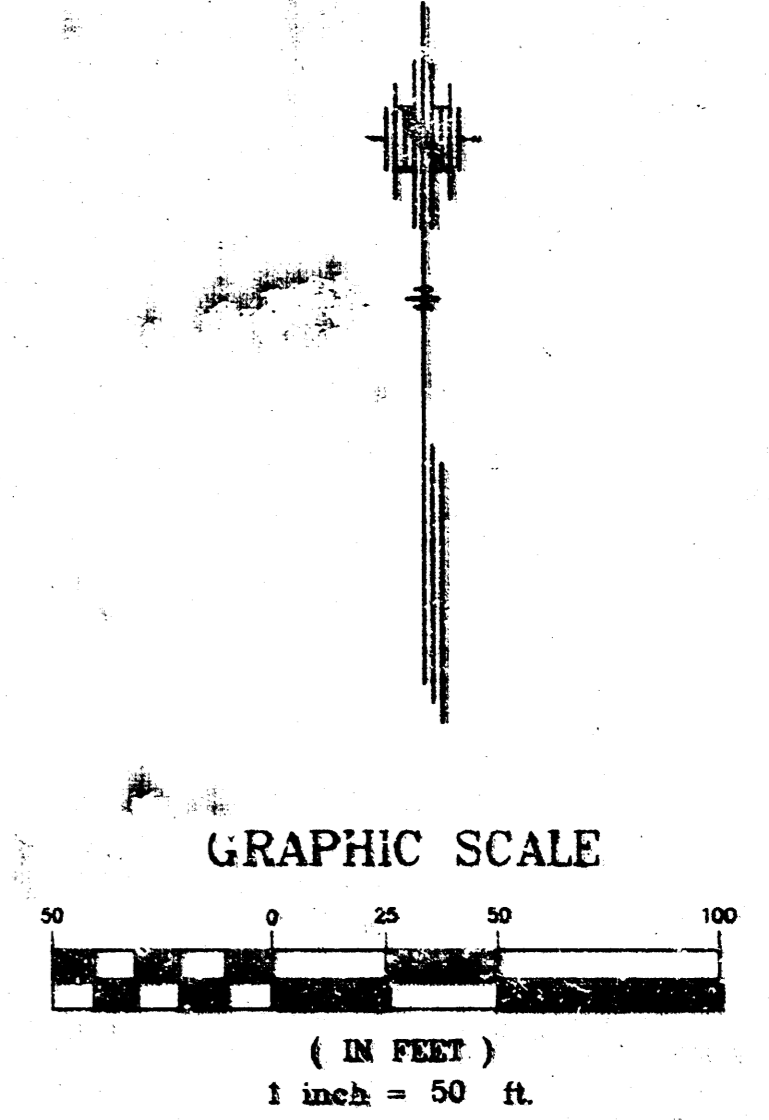
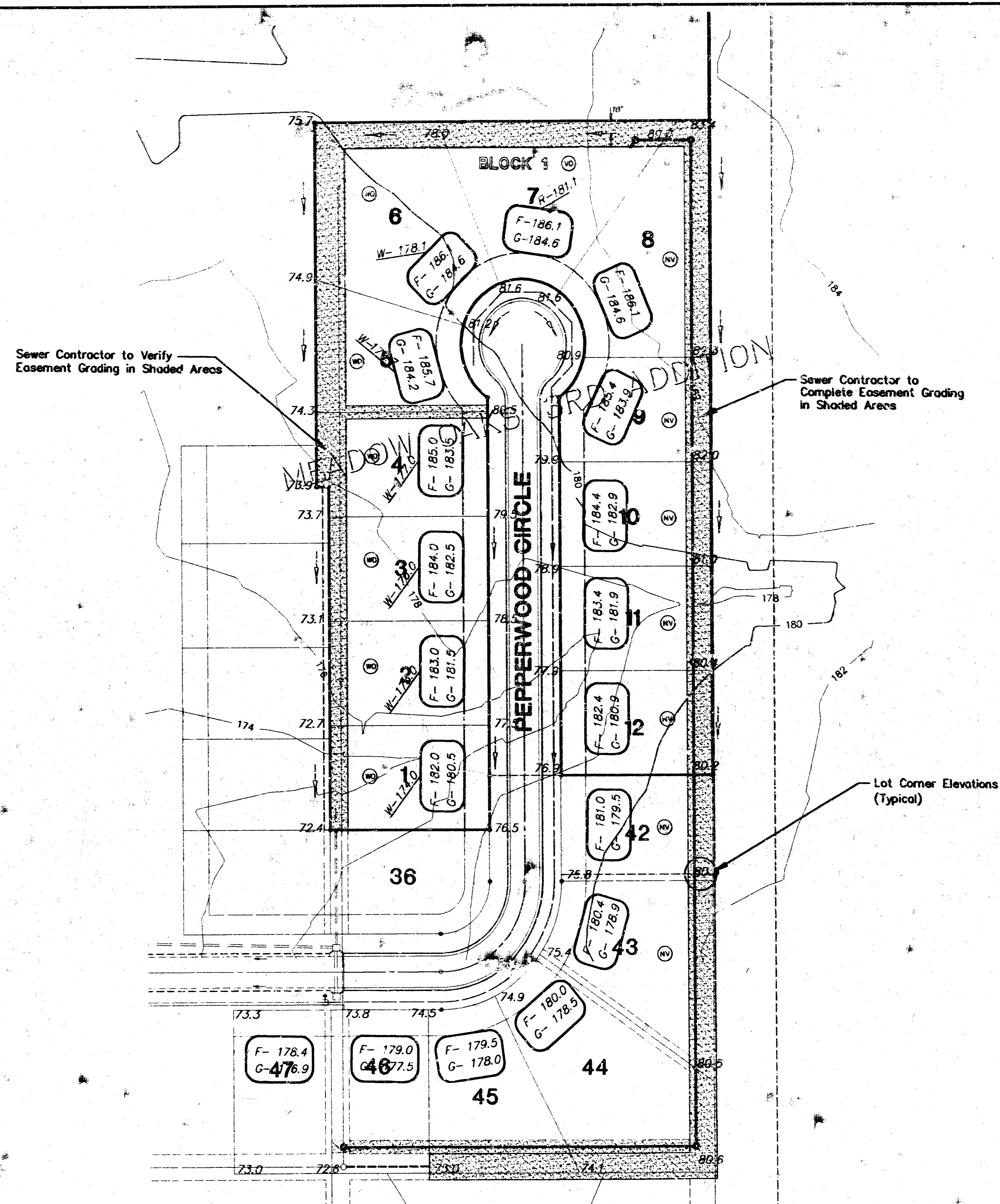




POE & ASSOCIATES OF KANSAS, INC. Consulting Engineers 434 N. Oliver, Suite 110 ■ Wichita, KS 67208 ■ 316/685-4114	
DESIGNER: K. Hill IN CHARGE: K. Handerson CAD DESIGNER: S. Schmidt DATE: July 1996 SHEET: 2 of 7	MEADOW OAKS 3RD ADDITION Lateral 69, Main 5 Sanitary Sewer Number 23 LINE NO. 1 CITY OF WICHITA, KANSAS Project No. 468-82571 Index Code 742676

E:\APPS\CAD\PLANS\0300\BASE Mod Jul 10 14:48:00 1996 Steve Schmidt, PEE & ASSOC.

X:\APPS\DWG\PL\3300\BASE - Thu Jul 11 10:03:19 1996 JHM:lebert - Pae & Assoc.



LEGEND

- G = Garage Floor Elevation
- F = Top Foundation Elevation
- R = Top Rear Wall Elevation (View Out)
- W = Basement Floor Elevation (Walk Out)
- (NV) = No View Out
- (VO) = View Out
- (WO) = Walk Out

BENCH MARKS

- (City of Wichita Datum)
1. City of Wichita std. BM disc at 29th & Edgemoor. 5.5' E. & 37' N. of 1/4 Section Corner. Elev. 172.38
 2. City of Wichita std. BM disc at 29th Street N. & Oliver. 38' N. & 33' E. of Centerline Both. Elev. 158.68
 3. 1" cut on concrete curb, S. end of SW return @ 28th Street & Meadow Oaks. Elev. 173.09

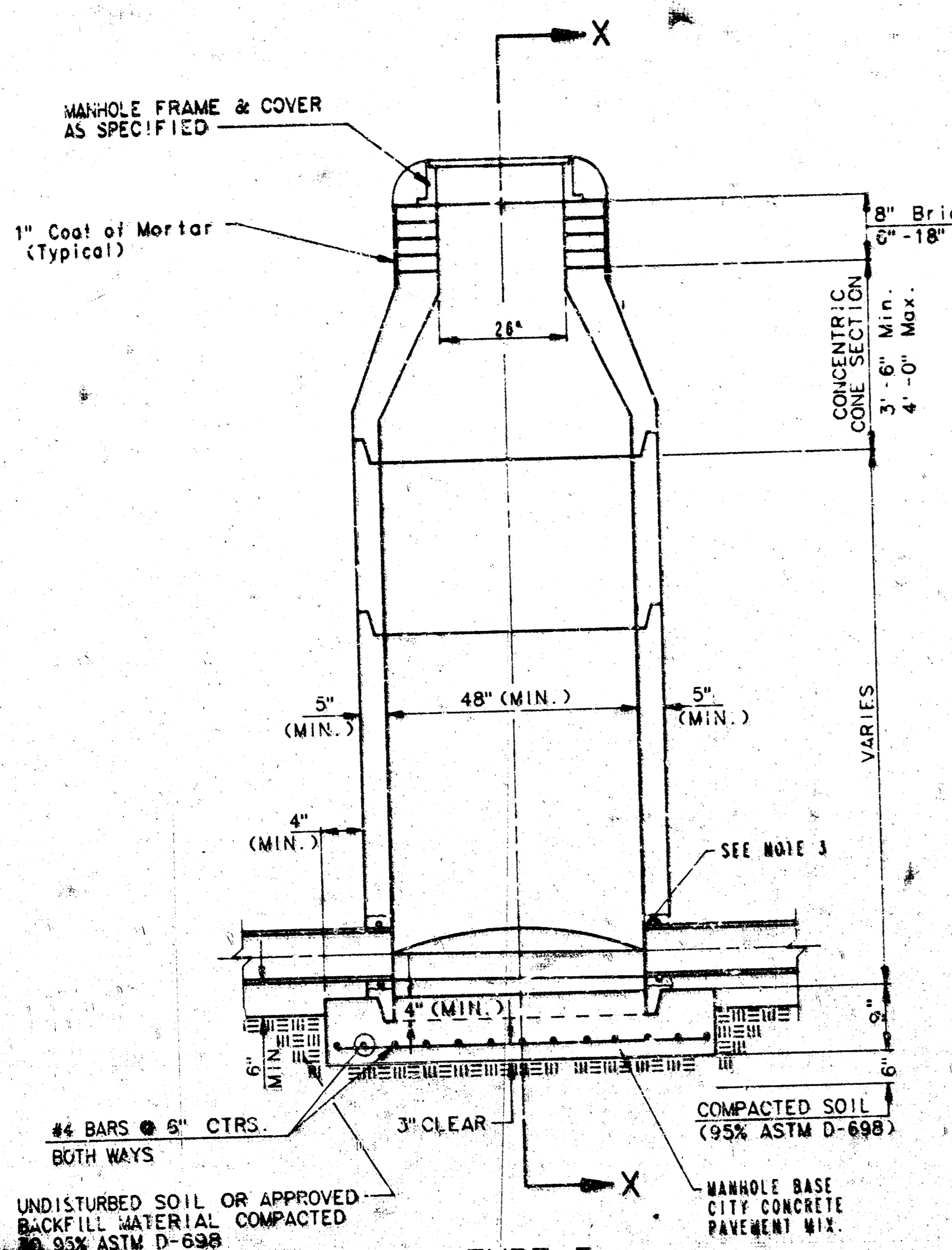
POE & ASSOCIATES OF KANSAS, INC.	
<small>Consulting Engineers 434 N. Oliver Suite 110 Wichita KS 67208 316/685-4114</small>	
<small>ENGINEER: K. Hill</small>	MEADOW OAKS 3RD ADDITION
<small>DATE: 06/01/96</small>	Easement Grading Plan
<small>CHECKED: K. Henderson</small>	CITY OF WICHITA, KANSAS
<small>DATE: S. Schmidt</small>	Project No. 488-82571
<small>DATE: July 1995</small>	Index Code 742678
3	7

SEWER APPURTENANCES DETAILS

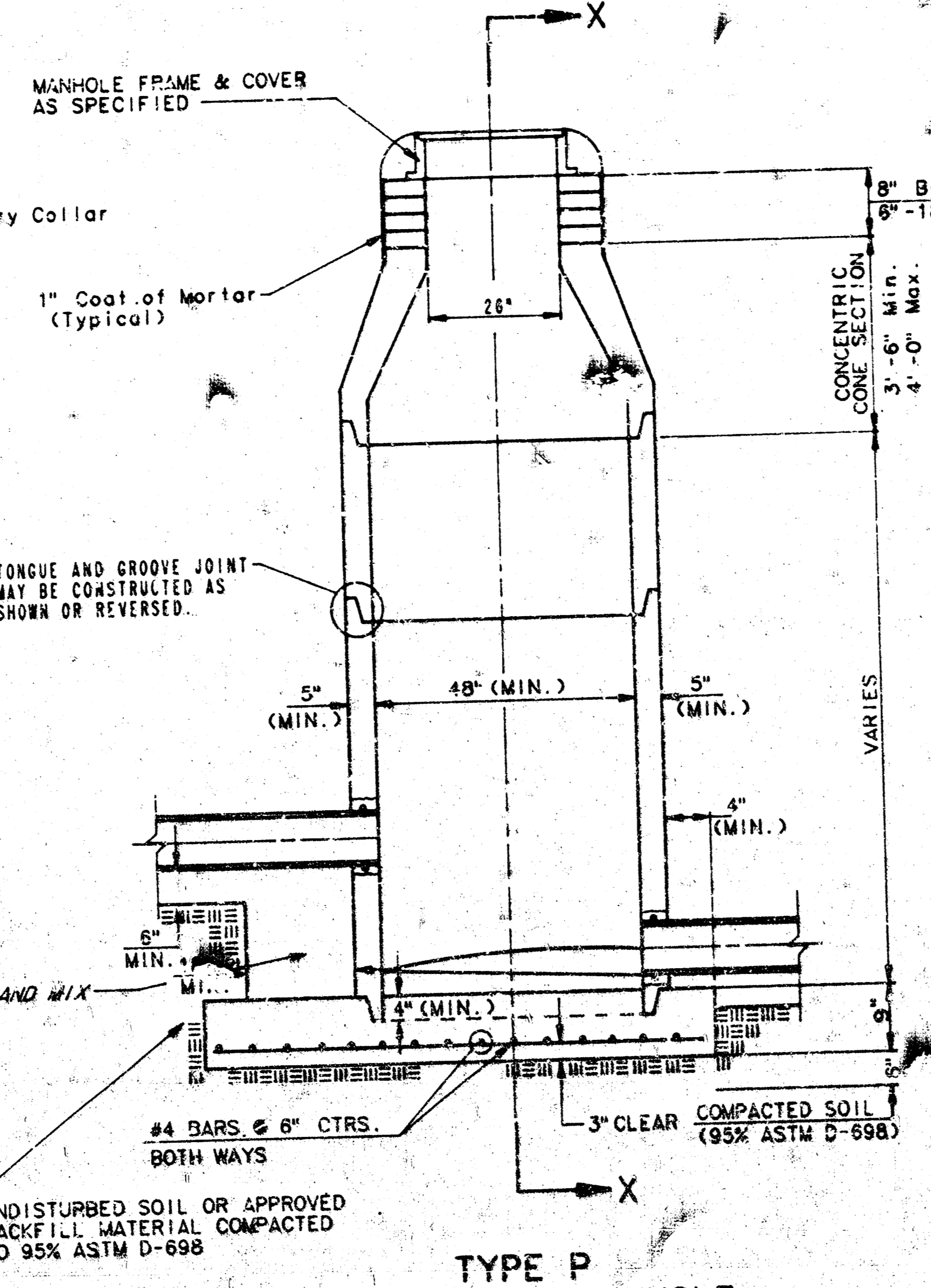
ADOPTED AS STANDARD DESIGN

BY

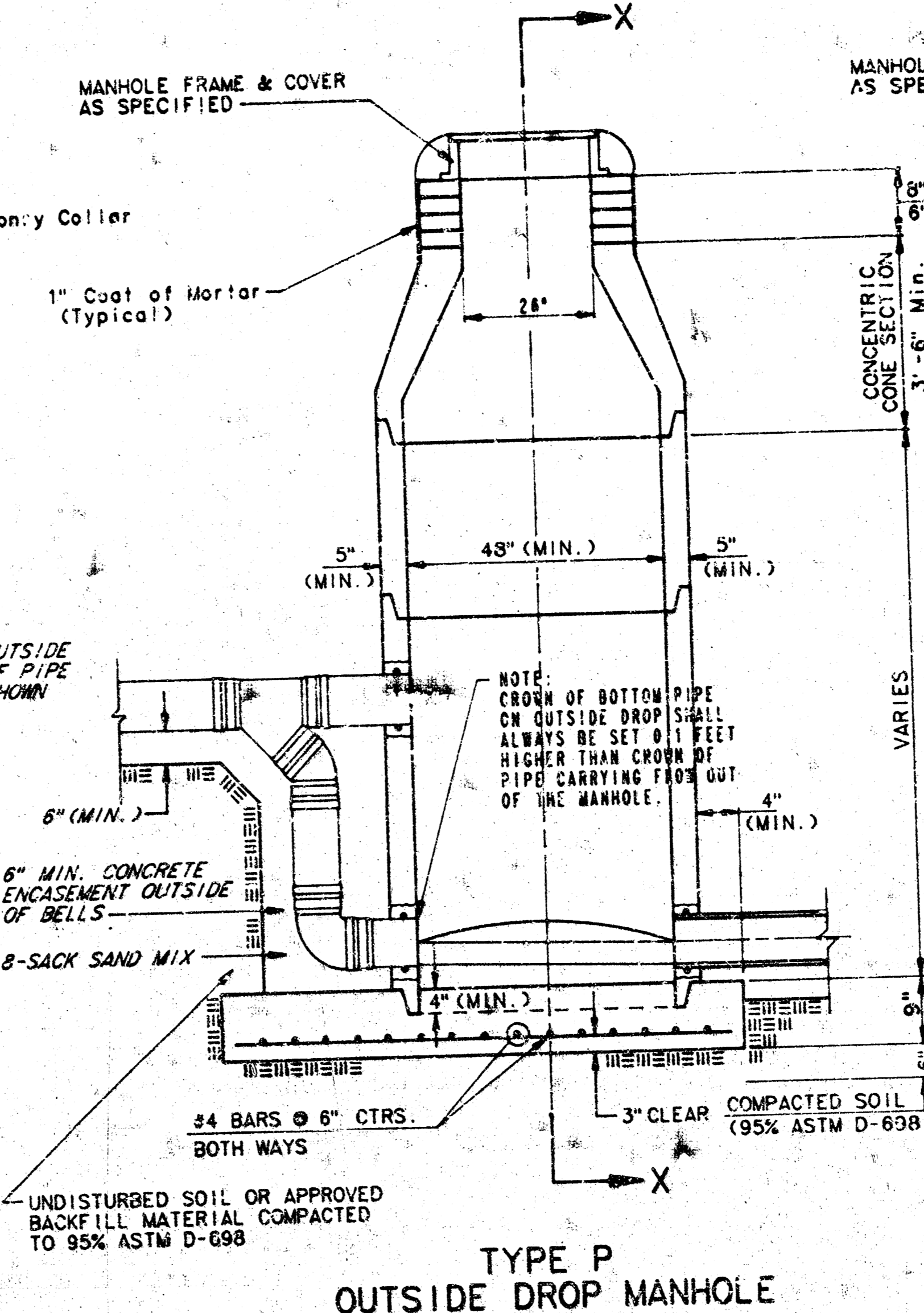
CITY OF WICHITA



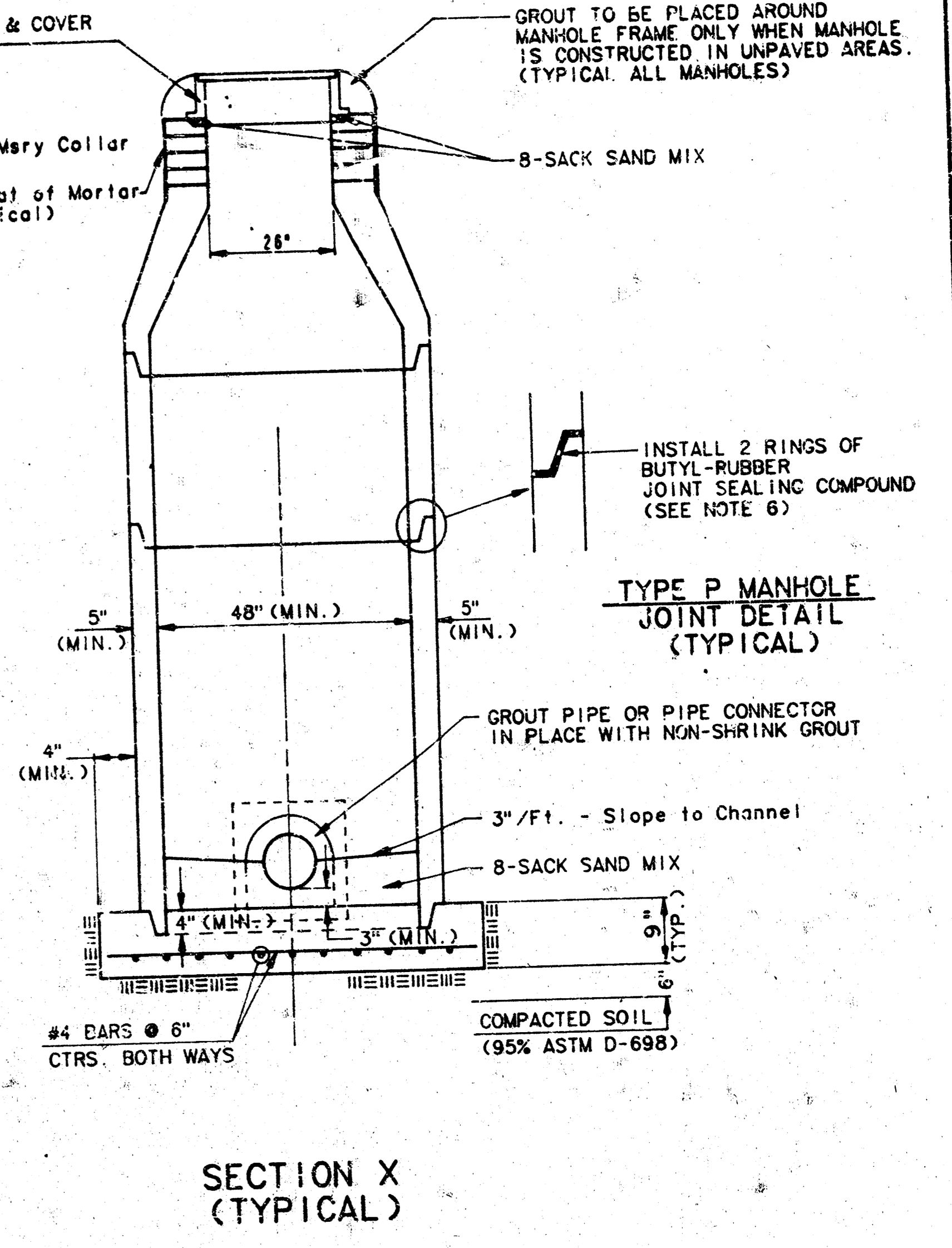
**TYPE P
STANDARD MANHOLE**



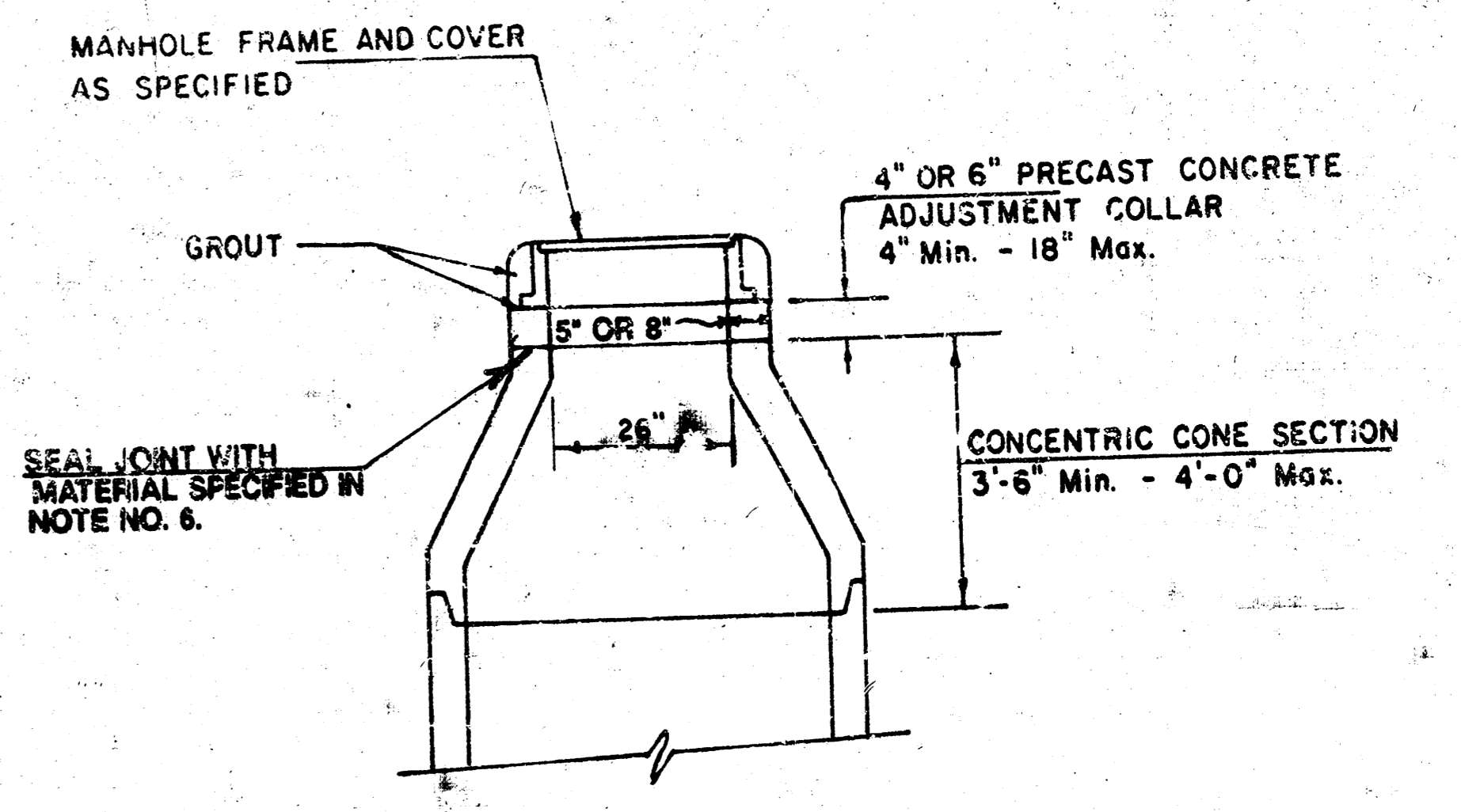
**TYPE P
INSIDE DROP MANHOLE**



**TYPE P
OUTSIDE DROP MANHOLE**



**SECTION X
(TYPICAL)**



**ALTERNATE CONSTRUCTION
IN UNPAVED AREAS**

- GENERAL NOTES**
- PRECAST MANHOLE NOTES**
1. ALL PRECAST CONCRETE MANHOLE SECTIONS SHALL CONFORM TO THE LATEST REVISION OF A.S.T.M. C478 AS MODIFIED BY THE SPECIFICATIONS.
 2. NON-SHRINK GROUT SHALL BE NON-METALLIC TYPE.
 3. APPROVED FLEXIBLE WATERSTOP GASKETS SHALL BE INSTALLED TO JOIN THE SEWER TO THE MANHOLE WALL WHEN A COMPOSITE PIPE OR P.V.C. PIPE IS USED. FOR OTHER TYPES OF PIPE THE SEWER SHALL BE GROUDED IN PLACE WITH NON-SHRINK GROUT. THE SEWER PIPE SHALL BE SUPPORTED WITH CONCRETE ENCASEMENT A MINIMUM OF 3 FEET FROM THE MANHOLE WALL AND TO THE FIRST JOINT FOR V.C.P. SUCH THAT THE JOINT REMAINS FLEXIBLE.
 4. ALL INSIDE SURFACES OF THE CONCRETE MANHOLE WHICH WOULD BE EXPOSED TO SEWER GAS SHALL BE COATED WITH 2 COATS TMECC SERIES 66 HI-BUILD EPOXYLINE, DRY THICKNESS OF 8 MILS (MIN.).
 5. EXTERIOR MANHOLE WALLS SHALL BE COATED WITH 1 COAT MORTICARMA 633 BITUMINOUS COATING.
 6. JOINT SEALING COMPOUND SHALL BE KENT SEAL NO. 2 OR APPROVED EQUAL.
 7. PRECAST MANHOLES SHALL BE SET AT LEAST 4 INCHES INTO THE MANHOLE BASE.
 8. TOP OF MANHOLE FLOOR SLAB SHALL BE AT LEAST 3 INCHES BELOW THE FLOW LINE OF THE OUTLET PIPE TO INSURE SUFFICIENT MINIMUM THICKNESS OF SHAPED INVERT.
 9. LIFTING HOLES SHALL BE FILLED WITH NON-SHRINK GROUT AND THE INTERIOR SURFACE COATED AS SPECIFIED.
 10. MORTAR USED IN MASONRY CONSTRUCTION SHALL CONTAIN 8 SACKS OF CEMENT PER CUBIC YARD. CONCRETE USED IN MANHOLE BASES SHALL CONFORM TO THE REQUIREMENTS OF CONCRETE FOR CONCRETE PAVEMENT CONSTRUCTION AS SPECIFIED IN THE CITY STANDARD PAVING SPECIFICATIONS USING CITY CONCRETE PAVEMENT MIX WITHOUT AIR ENTRAINING ADMIXTURE. MORTAR SHALL BE PLACED AROUND THE MANHOLE RING AS SHOWN ON THE DRAWINGS WHEN MANHOLES ARE CONSTRUCTED IN UNPAVED AREAS. MANHOLES CONSTRUCTED WHERE PIPE SIZES ARE SMALLER THAN 24" SHALL HAVE AN INSIDE DIAMETER OF 4". MANHOLES CONSTRUCTED WHERE PIPE SIZES ARE 24" OR LARGER SHALL HAVE AN INSIDE DIAMETER OF 5". COMPLETED MANHOLE SHALL BE WITHOUT LEAKS AND WATER TIGHT.

11. REINFORCING STEEL SHALL BE INSTALLED IN THE MANHOLE BASES AND SHALL CONSIST OF NO. 4 BARS PLACED ON 6" CENTERS IN BOTH DIRECTIONS. THE MANHOLE BASE REINFORCEMENT SHALL BE PLACED AT LEAST 3" ABOVE THE BOTTOM OF THE MANHOLE BASE. ALL COSTS FOR FURNISHING AND INSTALLING REINFORCING STEEL SHALL BE INCLUDED IN THE UNIT PRICE BID FOR THE MANHOLE.
12. OPENINGS SHALL BE CUT INTO THE MANHOLE WALL WHEN OUTSIDE DROPS ARE CONSTRUCTED ON EXISTING MANHOLES. SUCH OPENINGS CUT INTO EXISTING MANHOLES SHALL BE AS SMALL AS PRACTICAL TO FACILITATE INSTALLING AND GROUTING THE NEW PIPE IN PLACE. WATERSTOP GASKETS SHALL BE USED WITH P.V.C. AND A.B.S. COMPOSITE PIPE. THE NEW PIPE SHALL BE GROUDED INTO THE OPENING USING AN APPROVED NONSHRINK GROUT FOR THE FULL MANHOLE WALL THICKNESS. THE EXTERIOR OF THE COMPLETED CONNECTION SHALL BE SEALED WITH AN APPROVED BITUMINOUS COATING SUCH THAT THE CONNECTION WILL BE WATER TIGHT. FLOOR OF MANHOLE SHALL BE MODIFIED TO FORM NEW FLOW CHANNEL FOR THE NEW CONNECTION AS INDICATED BY THE DRAWING. THIS WORK, INCLUDING MODIFICATION OF MANHOLE FLOOR, SHALL BE SAID FOR AT THE UNIT PRICE BID FOR OUTSIDE DROP STACK, CONSTRUCTED ON EXISTING MANHOLE.
13. THE FLOORS OF ALL MANHOLES SHALL BE SHAPED WITH FLOW CHANNELS SUCH THAT THE MANHOLES WILL BE SELF-CLEANING AND FREE OF AREAS WHERE SOLIDS COULD BE DEPOSITED AS SEWAGE FLOWS THROUGH THE MANHOLE FROM ALL INLET PIPES TO THE OUTLET PIPE. FLOW CHANNELS SHALL BE SHAPED TO MATCH THE BOTTOM WAVES OF THE INFLOWING PIPES AND THE OUTFLOWING PIPE AS SHOWN BY THE DRAWINGS EXCEPT FOR INSIDE DROP MANHOLES. FLOW CHANNELS FOR INSIDE DROP MANHOLES SHALL BE CONSTRUCTED AS INDICATED BY THE DRAWING. MANHOLE FLOORS SHALL HAVE SLOPES OF 3 INCHES PER FOOT IN THE AREAS OUTSIDE OF THE FLOW CHANNELS SLOPED TOWARD THE FLOW CHANNELS. PIPES LAID THROUGH MANHOLES SHALL HAVE THE TOP REMOVED TO REAT LINES FOR THE FULL INSIDE DIAMETER OF THE MANHOLE. MANHOLE FLOORS SHALL THEN BE SHAPED AROUND THE BOTTOM HALF OF THE PIPE WHICH FORMS THE FLOW CHANNEL.
14. PIPES INSTALLED WITHIN THE EXCAVATION MADE FOR THE MANHOLE SHALL BE CRADLED WITH CONCRETE TO THE LIMITS OF THE MANHOLE EXCAVATION. WHEN CLAY PIPE IS USED, THE CRADLE SHALL EXTEND TO THE FIRST JOINT OUTSIDE THE MANHOLE. THE CRADLE SHALL BE TERMINATED AT THE CLAY PIPE JOINT IN A MANNER WHICH WILL MAINTAIN THE FLEXIBILITY OF THE JOINT. COST OF CRADLE WITHIN MANHOLE EXCAVATION OR TO CLAY PIPE JOINTS ADJACENT TO MANHOLE SHALL BE INCLUDED IN THE UNIT PRICE BID FOR THE MANHOLE.

15. MANHOLE COVER CASTINGS AND MANHOLE FRAME CASTINGS SHALL CONFORM TO THE REQUIREMENTS AS INDICATED IN THE STANDARD SPECIFICATIONS AND AS SHOWN IN THE STANDARD DETAIL DRAWINGS.
16. THE VERTICAL FREE FALL DROP INSIDE MANHOLES SHALL NOT EXCEED 2'. THE CROWNS OF INFLOWING PIPES SHALL NEVER BE SET LOWER THAN THE CROWN OF THE OUTFLOWING PIPE.
17. STANDARD MANHOLES AND STANDARD INSIDE DROP MANHOLES SHALL BE BID AS STANDARD MANHOLES FOR THE TYPE AND DIAMETER INDICATED. OUTSIDE DROP MANHOLES SHALL BE BID AS STANDARD OUTSIDE DROP MANHOLES FOR THE TYPE AND DIAMETER INDICATED. ALL MANHOLE DIAMETERS WILL BE 4' UNLESS INDICATED OTHERWISE.
18. A BRICK MASONRY COLLAR SHALL BE INSTALLED BETWEEN THE CAST IRON FRAME AND THE CONCENTRIC CONE. THE COLLAR WILL HAVE 6" WALLS AND A VERTICAL HEIGHT OF 6" MINIMUM AND 18" MAXIMUM. A 1" COAT OF MORTAR WILL BE PLASTERED ON THE OUTSIDE OF THE COLLAR.

REVISED NOV. 1993
NOTE NO. 16 REVISED JAN. 1991
Revised 3-21-89
Revised 8-10-88
Revised: June 12, 1985

PROJ. NO. 104825 B2571
SHEET NO. 147 OF 7

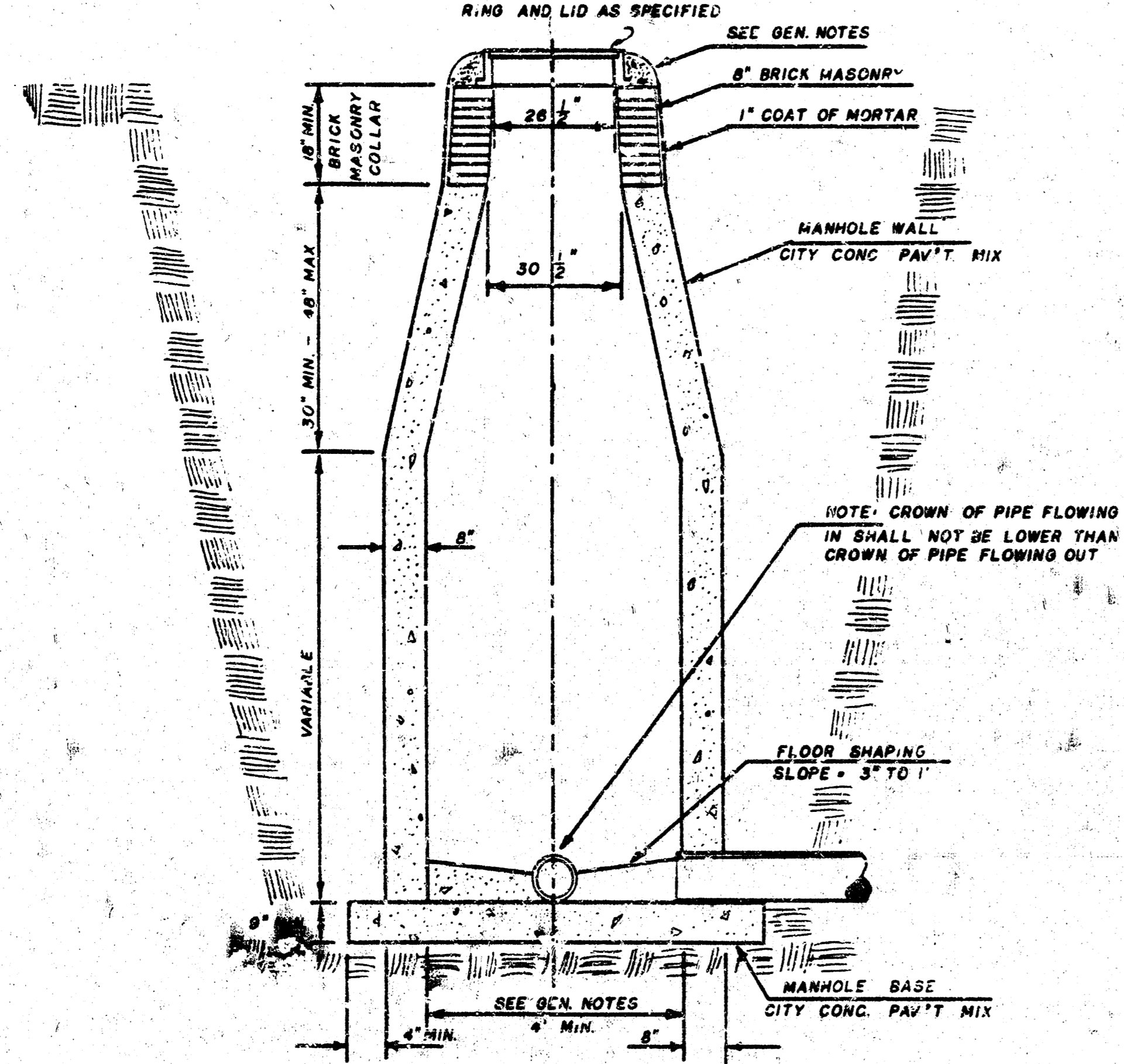
101151

SEWER APPURTENANCES DETAILS

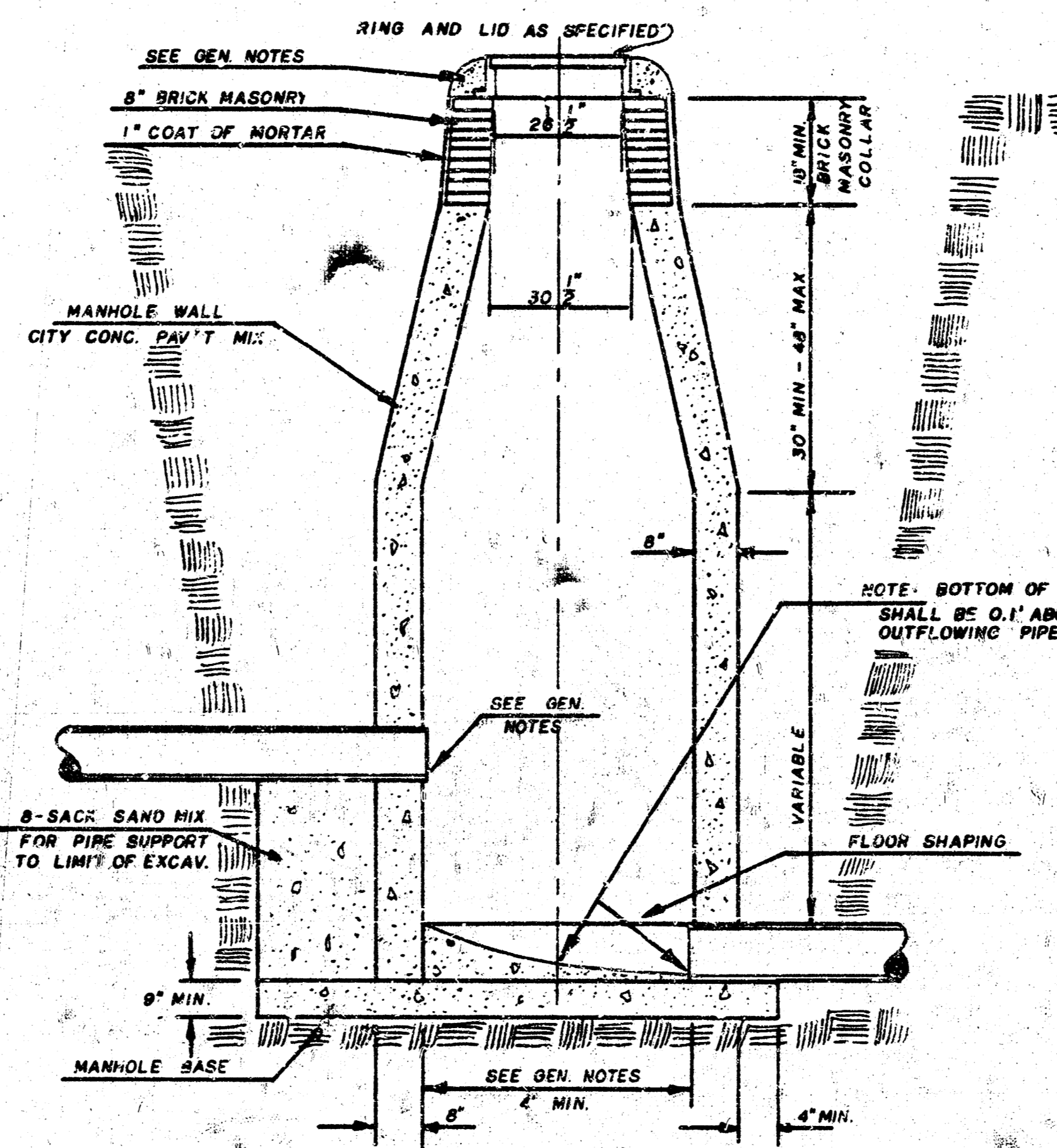
ADOPTED AS STANDARD DESIGN
BY

City of Wichita, Kansas

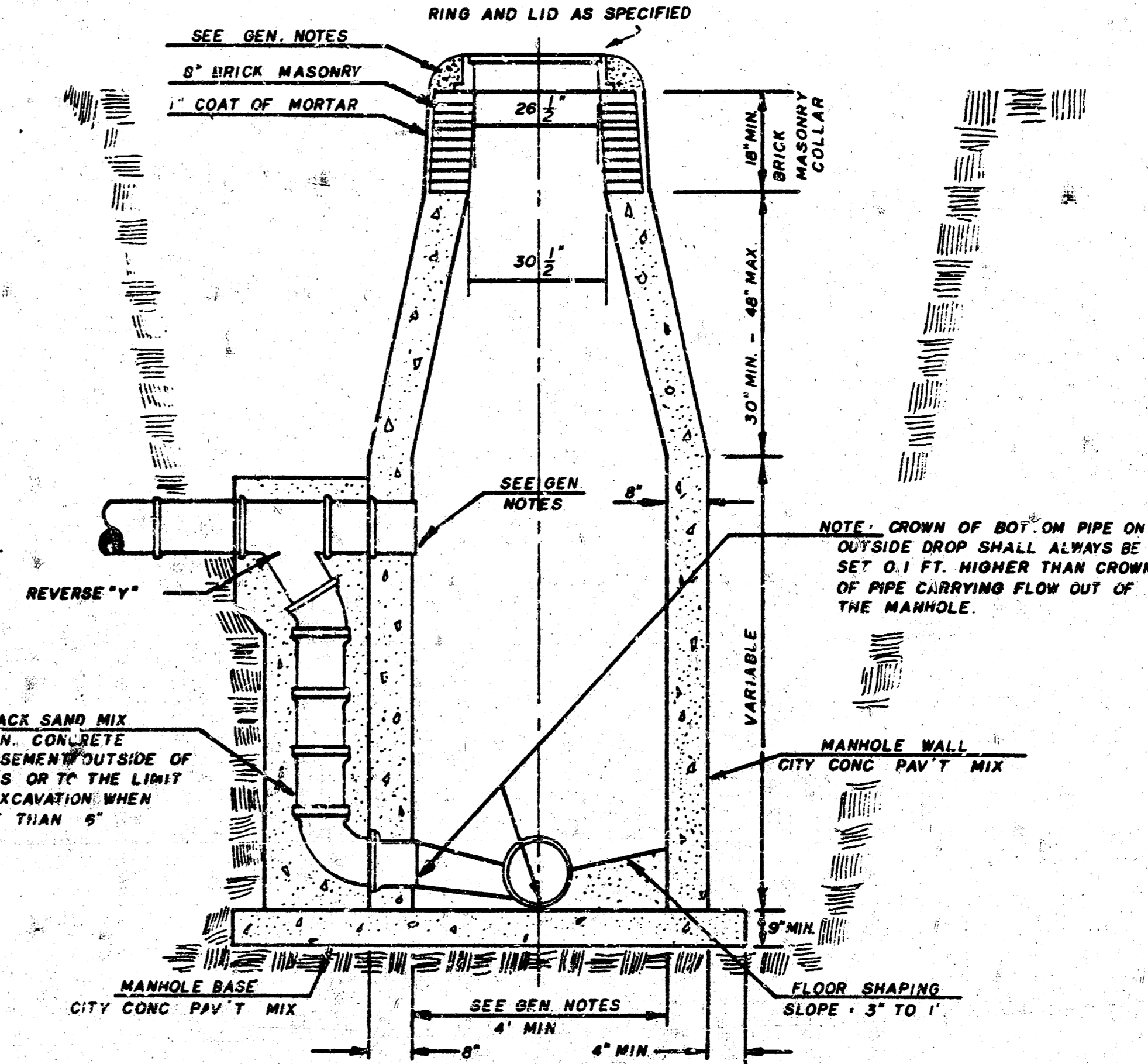
STANDARD MANHOLE TYPE "C"



INSIDE DROP MANHOLE TYPE "C"



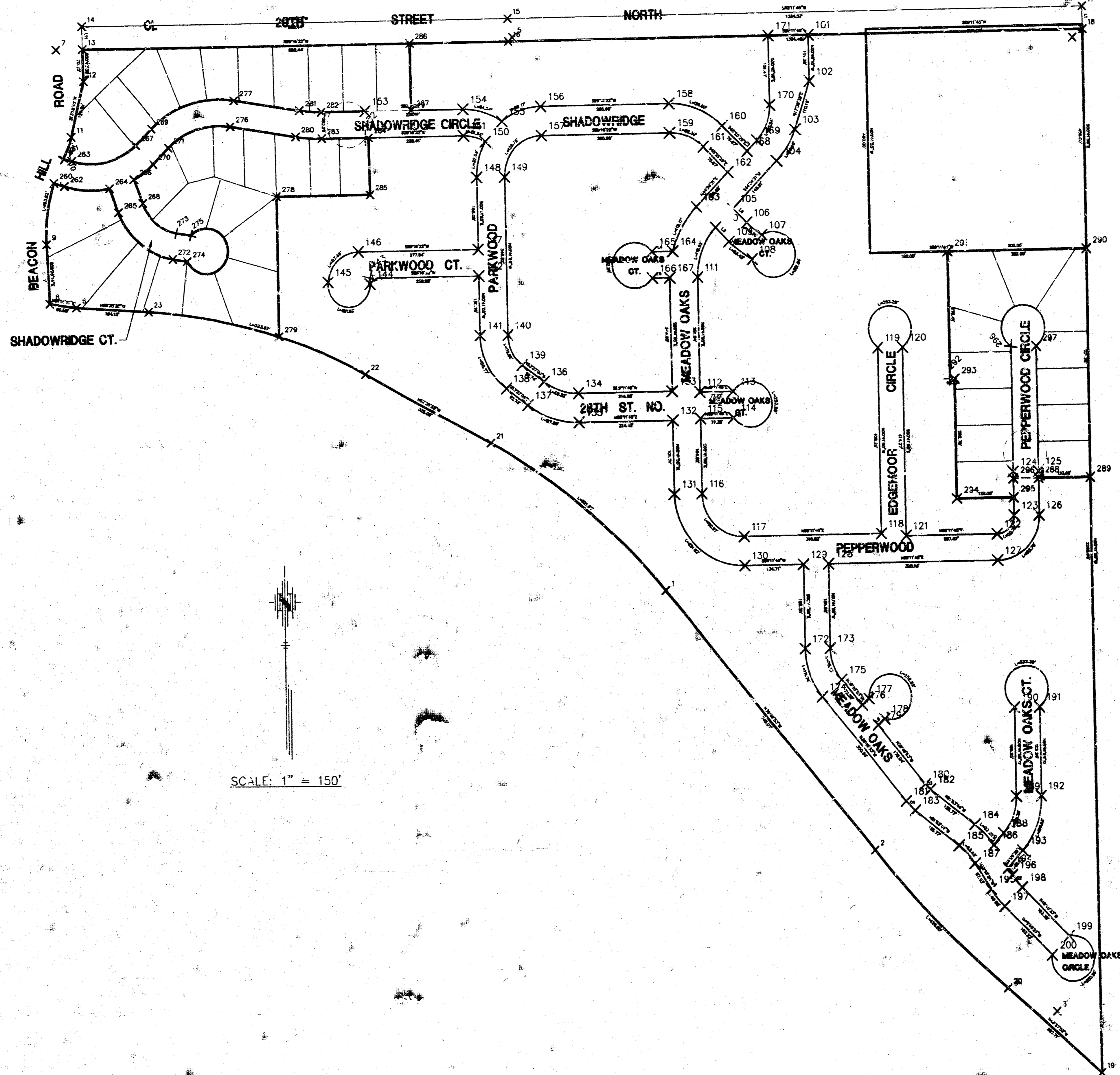
OUTSIDE DROP MANHOLE TYPE "C"



GENERAL NOTES

- MORTAR USED IN MASONRY CONSTRUCTION SHALL CONTAIN 8 SACKS OF CEMENT PER CUBIC YARD. CONCRETE USED IN MANHOLE WALLS AND BASES SHALL CONFORM TO THE REQUIREMENTS OF CONCRETE FOR CONCRETE PAVEMENT CONSTRUCTION AS SPECIFIED IN THE CITY STANDARD PAVING SPECIFICATIONS USING CITY CONCRETE PAVEMENT MIX WITHOUT AIR ENTRAINING ADMIXTURE. MORTAR SHALL BE PLACED AROUND THE MANHOLE RING AS SHOWN ON THE DRAWINGS WHEN MANHOLES ARE CONSTRUCTED IN UNPAVED AREAS. TYPE "C" MANHOLES CAN BE CONSTRUCTED ONLY WHERE PIPE SIZES ARE 8" OR SMALLER. THE INSIDE DIAMETER OF TYPE "C" MANHOLES SHALL BE 4' COMPLETED MANHOLE SHALL BE WITHOUT LEAKS AND WATER TIGHT.
- REINFORCING STEEL SHALL BE INSTALLED IN THE MANHOLE BASE. REINFORCING STEEL SHALL CONSIST OF NO. 4 BARS PLACED ON 6" CENTERS IN BOTH DIRECTIONS. REINFORCING STEEL SHALL BE PLACED 6" ABOVE THE BOTTOM OF THE MANHOLE BASE. COST OF FURNISHING AND INSTALLING REINFORCING STEEL SHALL BE INCLUDED IN THE UNIT PRICE BID FOR THE MANHOLE.
- AN OPENING SHALL BE CUT IN THE MANHOLE WALL FOR THE UPPER INLET PIPE FOR INSIDE AND OUTSIDE DROP MANHOLES. THE UPPER INLET PIPE SHALL BE GROUTED INTO THIS OPENING WITH NON-SHRINKING GROUT. THE EXTERIOR OF THIS COMPLETED CONNECTION SHALL BE SEALED WITH AN APPROVED BITUMINOUS COATING SUCH THAT THE CONNECTION WILL BE WATER TIGHT.
- THE FLOORS OF ALL MANHOLES SHALL BE SHAPED WITH FLOW CHANNELS SUCH THAT THE MANHOLES WILL BE SELF-CLEANING AND FREE OF AREAS WHERE SOLIDS COULD BE DEPOSITED AS SEWAGE FLOWS THROUGH THE MANHOLE FROM ALL INLET PIPES TO THE OUTLET PIPE. FLOW CHANNELS SHALL BE FORMED TO MATCH THE BOTTOM HALVES OF THE INFLUING PIPES AND THE OUTFLOWING PIPE AS SHOWN BY THE DRAWINGS EXCEPT FOR INSIDE DROP MANHOLES. FLOW CHANNELS FOR INSIDE DROP MANHOLES SHALL BE CONSTRUCTED AS INDICATED BY THE DRAWING. MANHOLE FLOORS SHALL HAVE SLOPES OF 3 INCHES PER FOOT IN THE AREAS OUTSIDE OF THE FLOW CHANNELS SLOPED TOWARD THE FLOW CHANNELS. PIPES LAID THROUGH MANHOLES SHALL HAVE THE TOP HALF REMOVED TO NEAT LINES FOR THE FULL INSIDE DIAMETER OF THE MANHOLE. MANHOLE FLOORS SHALL THEN BE SHAPED AROUND THE BOTTOM HALF OF THE PIPE WHICH FORMS THE FLOW CHANNEL.
- PIPES INSTALLED WITHIN THE EXCAVATION MADE FOR THE MANHOLE SHALL BE CRADLED WITH CONCRETE TO THE LIMITS OF THE MANHOLE EXCAVATION. WHEN CLAY PIPE IS USED, THE CRADLE SHALL EXTEND TO THE FIRST JOINT OUTSIDE THE MANHOLE. THE CRADLE SHALL BE TERMINATED AT THE CLAY PIPE JOINT IN A MANNER WHICH WILL MAINTAIN THE FLEXIBILITY OF THE JOINT. COST OF CRADLE WITHIN MANHOLE EXCAVATION OR TO CLAY PIPE JOINTS ADJACENT TO MANHOLE SHALL BE INCLUDED IN THE UNIT PRICE BID FOR THE MANHOLE.
- MANHOLE COVER CASTINGS AND MANHOLE FRAME CASTINGS SHALL CONFORM TO THE REQUIREMENTS AS INDICATED IN THE STANDARD SPECIFICATIONS AND AS SHOWN IN THE STANDARD DETAIL DRAWINGS.
- THE VERTICAL, FREE FALL DROP INSIDE MANHOLES SHALL NOT EXCEED 2'. THE CROWNS OF INFLOWING PIPES SHALL NEVER BE SET LOWER THAN THE CROWN OF THE OUTFLOWING PIPE.
- STANDARD MANHOLES TYPE "C" AND STANDARD INSIDE DROP MANHOLES TYPE "C" SHALL BE BID AS STANDARD MANHOLES FOR THE TYPE AND DIAMETER INDICATED. OUTSIDE DROP MANHOLES TYPE "C" SHALL BE BID AS STANDARD OUTSIDE DROP MANHOLES FOR THE TYPE AND DIAMETER INDICATED. ALL MANHOLE DIAMETERS WILL BE 4' UNLESS INDICATED OTHERWISE.

K:\APR96\DRAWING\PLIST.MXD May 8 11:32:53 1996 Kelly Henderson - Roe and Associates, Inc.



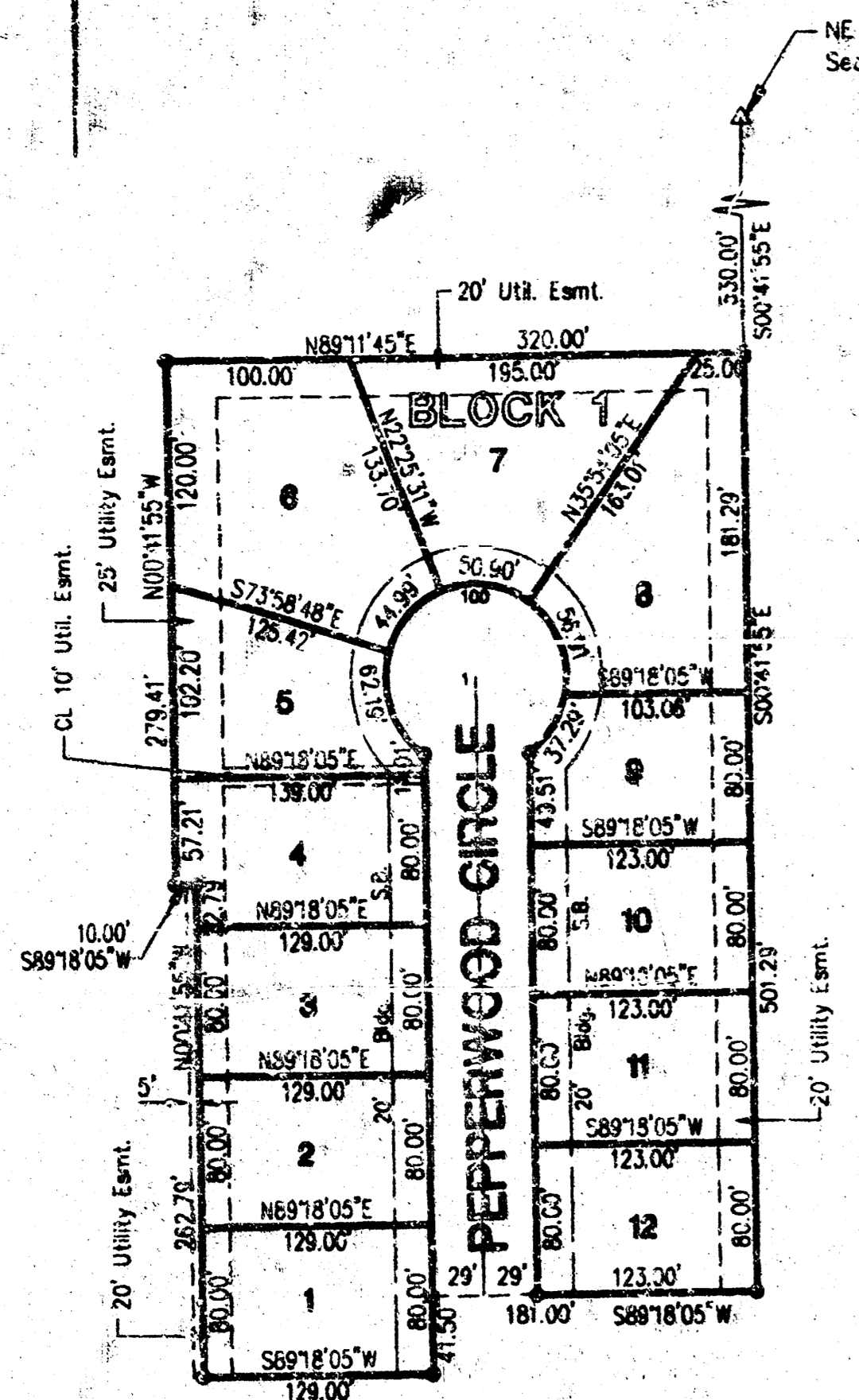
POINT #	NORTHING	EASTING
1	3724.913	4030.031
2	3152.749	4507.271
3	2796.568	4923.575
4	4931.876	4977.043
5	4940.574	3686.269
6	4353.253	2675.563
7	4918.067	2336.733
8	4361.896	2815.355
9	4492.087	2609.320
10	4679.308	2650.173
11	4727.412	2667.960
12	4848.976	2696.722
13	4918.970	2695.824
14	4958.366	2695.199
15	4981.410	3875.560
16	4931.414	3676.195
17	5000.000	5000.000
18	4950.004	5000.610
19	2661.514	5028.515
20	2847.864	4809.310
21	4051.520	3627.212
22	4203.635	3339.340
23	4343.851	2839.486
101	4841.134	4368.672
102	4839.385	4370.093
103	4734.864	4336.756
104	4666.185	4295.338
105	4562.319	4193.005
106	4531.631	4224.746
107	4504.210	4260.057
108	4450.648	4236.627
109	4490.316	4183.439
110	4521.300	4152.297
111	4412.390	4109.088
112	4160.457	4112.170
113	4161.540	4189.379
114	4103.546	4190.193
115	4102.461	4112.878
116	3937.650	4114.887
117	3842.830	4212.227
118	3847.262	4528.020
119	4255.608	4523.041
120	4256.315	4581.036
121	3842.077	4586.085
122	3844.983	4753.141
123	3885.467	4832.577
124	3981.777	4831.402
125	3982.484	4889.398
126	3885.174	4890.572
127	3788.989	4793.955
128	3781.541	4405.812
129	3780.727	4347.818
130	3778.836	4213.126
131	3936.869	4050.692
132	4098.563	4043.920
133	4162.558	4048.140
134	4159.547	3833.608
135	4095.553	3834.507
136	4185.488	3752.850
137	4133.933	3714.985
138	4171.151	3664.376
139	4222.676	3702.337
140	4288.485	3668.576
141	4287.705	3604.581
142	4418.443	3602.967
143	4415.298	3352.022
144	4402.259	3352.187
145	4406.534	3252.432
146	4472.916	3324.759
147	4476.439	3602.290
148	4634.504	3600.352
149	4635.284	3664.348
150	4712.964	3620.894
151	4726.067	3571.388
152	4723.193	3344.997
153	4761.189	3344.261
154	4784.062	3570.652
155	4757.157	3659.430
156	4789.357	3751.369
157	4775.362	3752.211
158	4793.110	4047.069

POINT #	NORTHING	EASTING
159	4729.115	4047.862
160	4743.644	4169.970
161	4698.055	4125.052
162	4642.141	4181.801
163	4566.878	4107.546
164	4469.646	4052.261
165	4468.984	4005.074
166	4410.990	4005.892
167	4411.540	4045.104
168	4687.730	4226.719
169	4711.104	4249.749
170	4788.119	4280.807
171	4939.870	4278.681
172	5095.190	4350.080
173	5095.897	4408.076
174	5489.630	4389.055
175	5526.785	4433.595
176	5471.539	4479.839
177	5484.661	4495.811
178	5440.121	4532.962
179	5426.798	4516.990
180	5296.220	4625.905
181	5259.069	4581.365
182	5284.365	4638.123
183	5238.726	4602.331
184	5206.755	4737.086
185	5161.116	4701.295
186	5161.799	4779.839
187	5121.655	4736.927
188	5187.507	4802.274
189	5268.542	4832.099
190	5463.781	4829.718
191	5464.489	4887.714
192	5289.249	4890.094
193	5149.372	4845.974
194	5110.846	4812.354
195	5064.857	4772.799
196	5095.826	4821.839
197	5076.943	4803.472
198	5068.434	4844.000
199	2961.281	4953.701
200	2919.790	4913.173
201	4626.778	2679.513
202	4680.460	2650.755
203	4619.487	2651.653
204	4674.911	2668.747
205	4614.768	2753.628
206	4561.990	2772.849
207	4634.614	2808.126
208	4709.354	2813.144
209	4581.838	2827.347
210	4744.905	2849.995
211	4667.613	2853.414
212	4703.164	2890.265
213	4459.246	2898.100
214	4516.573	2906.909
215	4454.027	2932.055
216	4511.354	2940.874
217	4749.037	3035.466
218	4806.338	3044.446
219	4595.545	3136.788
220	4287.562	3140.544
221	4726.118	3161.718
222	4783.419	3190.698
223	4779.873	3240.282
224	4721.878	3241.018
225	4723.288	3352.122
226	4598.298	3353.708
227	4928.568	3451.664
228	4792.590	3453.517
229	3967.267	4889.583
230	3968.787	5012.574
231	4470.039	5006.462
232	4465.548	4698.493
233	4186.159	4689.900
234	4186.281	4699.899
235	3923.510	4703.103
236	3925.083	4832.094
237	3966.580	4831.588
238	4256.773	4886.054
239	4256.066	4828.058

SCALE: 1" = 150'

POE & ASSOCIATES OF KANSAS, INC. Consulting Engineers 434 N. Oliver Suite 110 Wichita KS 67208 316/885-4114	
SURVEYOR: K. Henderson	MEADOW OAKS 3RD ADDITION COORDINATE POINTS LIST CITY OF ANDOVER, KANSAS
DATE: May 1996	PROJECT NO. 468-82571 INDEX CODE 742676

PL 652



LINE	DIRECTION	DISTANCE
1	N89°41'55\"W	330.00'

CURVE	RADIUS	LENGTH	TANGENT	CHORD	BEARING	DELTA
100	50.00'	251.79'	35.62'	58.00'	S89°18'05\"W	289°05'56\"

KNOW ALL MEN BY THESE PRESENTS:
 That the State Bank of Colwich, holders of a mortgage on the property described in the Surveyor's Certificate, do hereby consent to the plat of Meadow Oaks 3rd Addition.

State Bank of Colwich
Frank A. Suestenrop
 Frank A. Suestenrop, President

STATE OF KANSAS, COUNTY OF SEDGWICK: ss.
 This instrument was acknowledged before me on this 25 day of June, 1996, by Frank A. Suestenrop, President of the State Bank of Colwich.

Steven Schaeffnecker
 Notary Public
 My Appointment Expires: 8-21-98

KNOW ALL MEN BY THESE PRESENTS:
 That we, Critchfield Real Estate Limited Partnership 1985, holders of a mortgage on the property described in the Surveyor's Certificate, do hereby consent to the plat of Meadow Oaks 3rd Addition.

Critchfield Real Estate Limited Partnership 1985
Edward C. Hill
 Edward C. Hill, Agent

STATE OF KANSAS, COUNTY OF SEDGWICK: ss.
 This instrument was acknowledged before me on this 25th day of January, 1996, by Edward C. Hill, Agent for Critchfield Real Estate Limited Partnership 1985.

Nancy N. Pruitt
 Notary Public
 My Appointment Expires: June 11, 1997

BENCHMARKS
 (City of Wichita Datum)

BM #1
 City of Wichita Benchmark Disc, 5.5' E,
 and 37' N. of N 1/4 Corner Sec. 1-27-1E
 Elev. 172.38

BM #2
 NW Corner Concrete Gutter on Beacon Hill
 Road Median at 29th Street North
 Elev. 182.89

STATE OF KANSAS, COUNTY OF SEDGWICK: ss.
 I, Kenny E. Hill, being a duly licensed Land Surveyor in said County and State, do hereby certify that I have been in responsible charge of surveying and platting "MEADOW OAKS 3RD ADDITION" to Wichita, Kansas, being a replat of part of Lot 1, Block 1 and Lots 37, 38, 39, 40, and 41, Block 2 in Meadow Oaks Addition to Wichita, Kansas being more particularly described as follows:

Commencing at the Northeast Corner of the West Half of the Northeast Quarter of Section 1, Township 27 South, Range 1 East of the 6th P.M. Sedgwick County, Kansas, thence S00°41'55"E for a distance of 530.00 feet to the point of beginning; thence S00°41'55"E for a distance of 507.29 feet to the Southeast corner of said Lot 41, Block 2; thence S89°18'05"W for a distance of 181.00 feet; thence S00°41'55"E for a distance of 41.50 feet to the Southeast corner of said Lot 37, Block 2; thence S89°18'05"W for a distance of 128.00 feet; thence N00°41'55"W for a distance of 282.78 feet to the Northwest corner of said Lot 39, Block 2; thence S89°18'05"W for a distance of 10.00 feet; thence N00°41'55"W for a distance of 279.41 feet to the Northeast Corner of Lot 29, Block 2, of said Meadow Oaks Addition; thence N89°11'45"E for a distance of 320.00 feet to the point of beginning. Vacation of the previously dedicated easements are by virtue of K.S.A. 12-512 (b).

The accompanying plat is a true and correct exhibit of property surveyed.
 Dated this 25th day of January, 1996.



KNOW ALL MEN BY THESE PRESENTS:
 That we, the undersigned, have caused the land described in the Surveyor's Certificate to be platted into lots, a block, and a street. The street is hereby dedicated to and for the use of the public. Easements are hereby granted as indicated for the construction and maintenance of drainage and utilities. The minimum low opening elevation for the homes built in this addition shall be 166.0 (City of Wichita Datum).

JAH-Inc.
Mathias Eck
 Mathias Eck, President

STATE OF KANSAS, COUNTY OF SEDGWICK: ss.
 This instrument was acknowledged before me on this 29th day of January, 1996, by Mathias Eck, President of JAH-Inc.

Carol R. Barnes
 Notary Public
 My Appointment Expires: _____

This plat of MEADOW OAKS 3RD ADDITION to Wichita, Kansas has been submitted to and approved by this WICHTA-SEDGWICK COUNTY METROPOLITAN AREA PLANNING COMMISSION, Wichita, Kansas.
 Dated this 12th day of October, 1996



WICHTA-SEDGWICK COUNTY METROPOLITAN AREA PLANNING COMMISSION
Susan Osborne-Howes
 Susan Osborne-Howes, Chairman
Marvin S. Kraut
 Marvin S. Kraut, Secretary

This plat approved and all dedications shown hereon accepted by the City Council of the City of Wichita, Kansas, this 19th day of February, 1996.



Bob Knight
 Bob Knight, Mayor
Pat Burnett
 Pat Burnett, Deputy City Clerk

Entered on transfer record this 25th day of APRIL, 1996.

Susan E. Crockett-Spoon
 Susan E. Crockett-Spoon, County Clerk

This is to certify that this instrument was filed for record in the Register of Deeds Office at 12:30 A.M.-P.M. on the 26th day of April, 1996.

Pat Kettler
 Pat Kettler, Register of Deeds
Phyllis Hornhoad
 Phyllis Hornhoad, Chief Deputy

#1522257



MEADOW OAKS 3RD ADDITION

TO WICHITA, SEDGWICK COUNTY, KANSAS

20.00
 CA

F:\PPS\DD\UP\550\17\NAL Thu Jun 25 10:15:12 1996 Jie Libert - Pgs 6 Assoc.