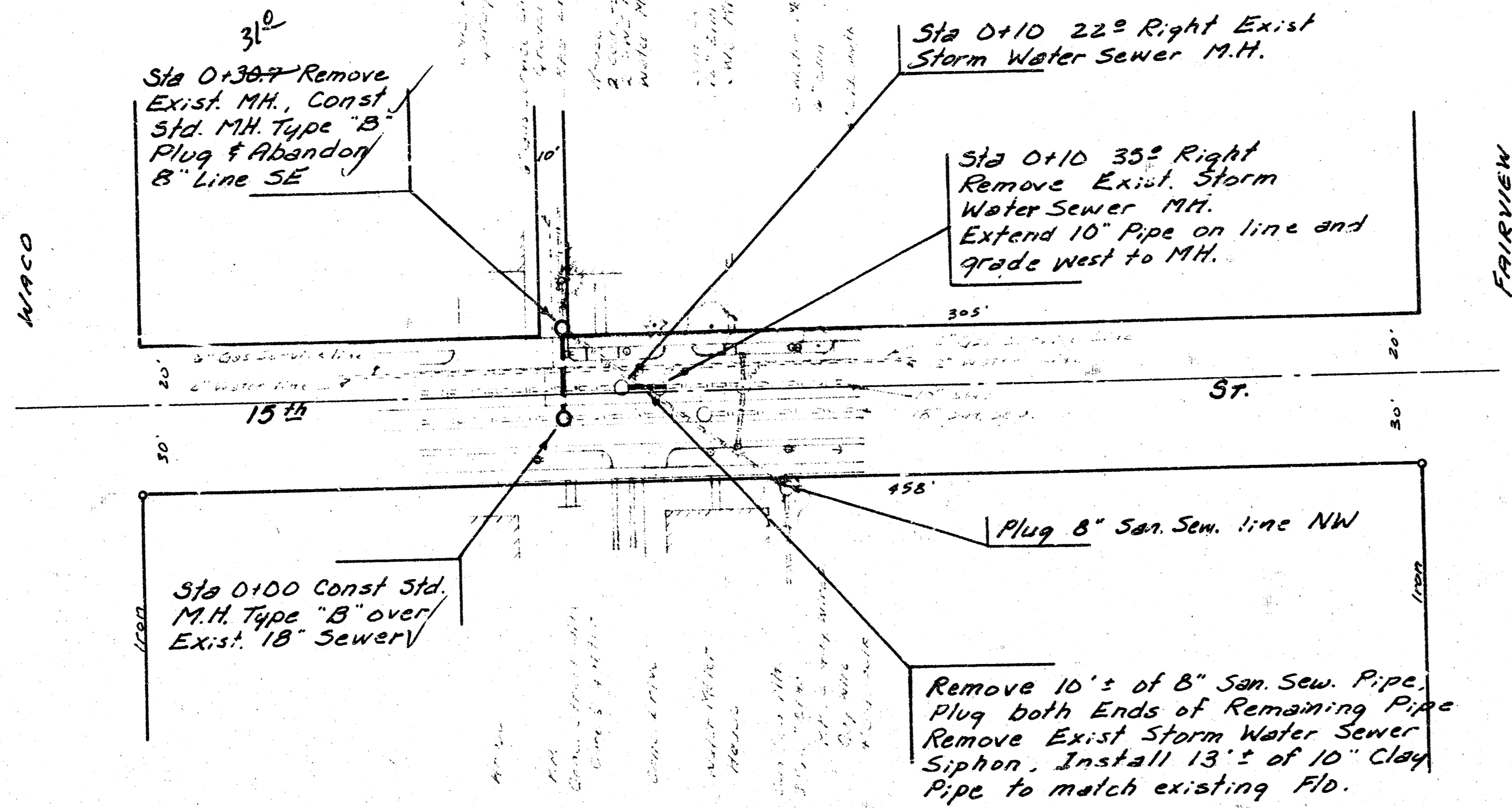


Scale Plan 1" = 40'
 Profile 1" = 40' Horiz.
 1" = 5' Vert.



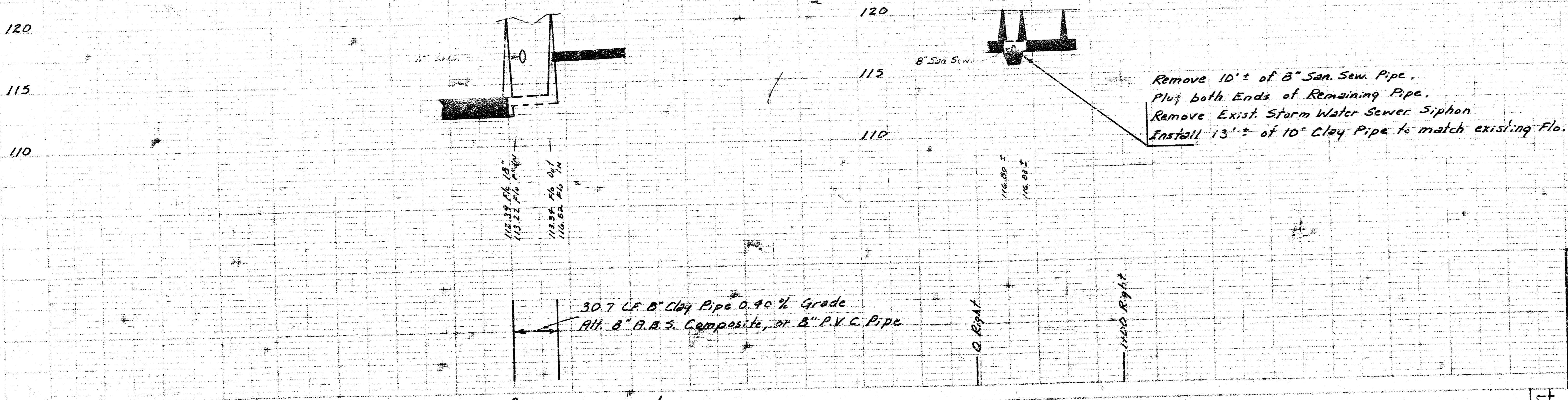
B.M. 119.16 Brass Rod in concrete post 24.5' N of E 17th St. and 22.5' E. of the E. of Arkansas Ave.
 B.M. 124.57 SW corner bottom conc. step House # 1742 N. Waco.
 B.M. 122.87 SE corner conc. porch House # 224 W. 15th St.

Sta 0+100 Const Std. M.H. Type "B" over Exist. 18" Sewer

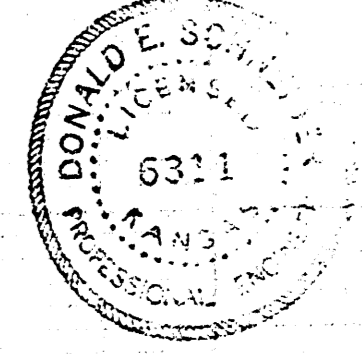
Sta 0+30.7 Remove Exist. MH, Const Std. M.H. Type "B", Plug and Abandon 8" Line SE

Sta 0+10 22' Right Exist Storm Water Sewer M.H.

Sta 0+10 35' Right Remove Exist. Storm Water Sewer M.H. Extend 10" Pipe on line and grade west to M.H.



As Built
 8/81



RECONSTRUCTION OF A PORTION OF S.S. #1
 BETWEEN WACO AND FAIRVIEW AT 15TH ST. NO.
 CITY OF WICHITA, KANSAS
 R.W. BRUGGEMAN
 DIRECTOR OF ENGINEERING - CITY ENGINEER
 PROJ. NO: 542-80-245-80034-000-001

FILMED FROM THE BEST AVAILABLE COPY