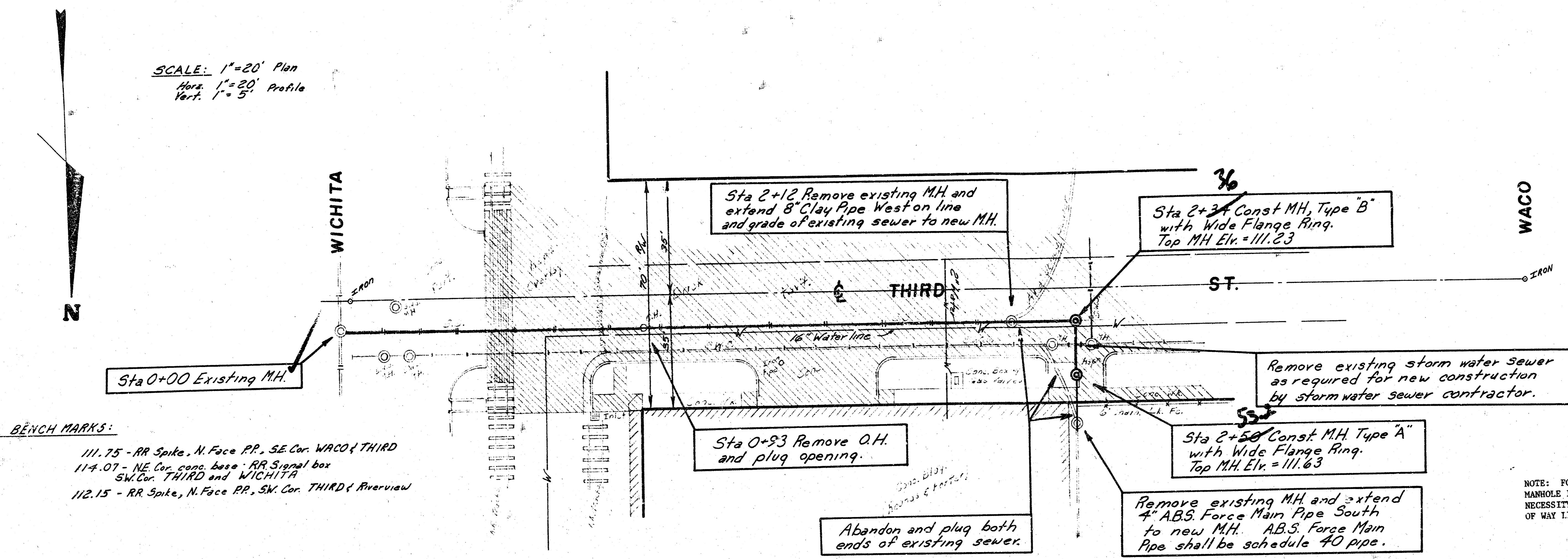


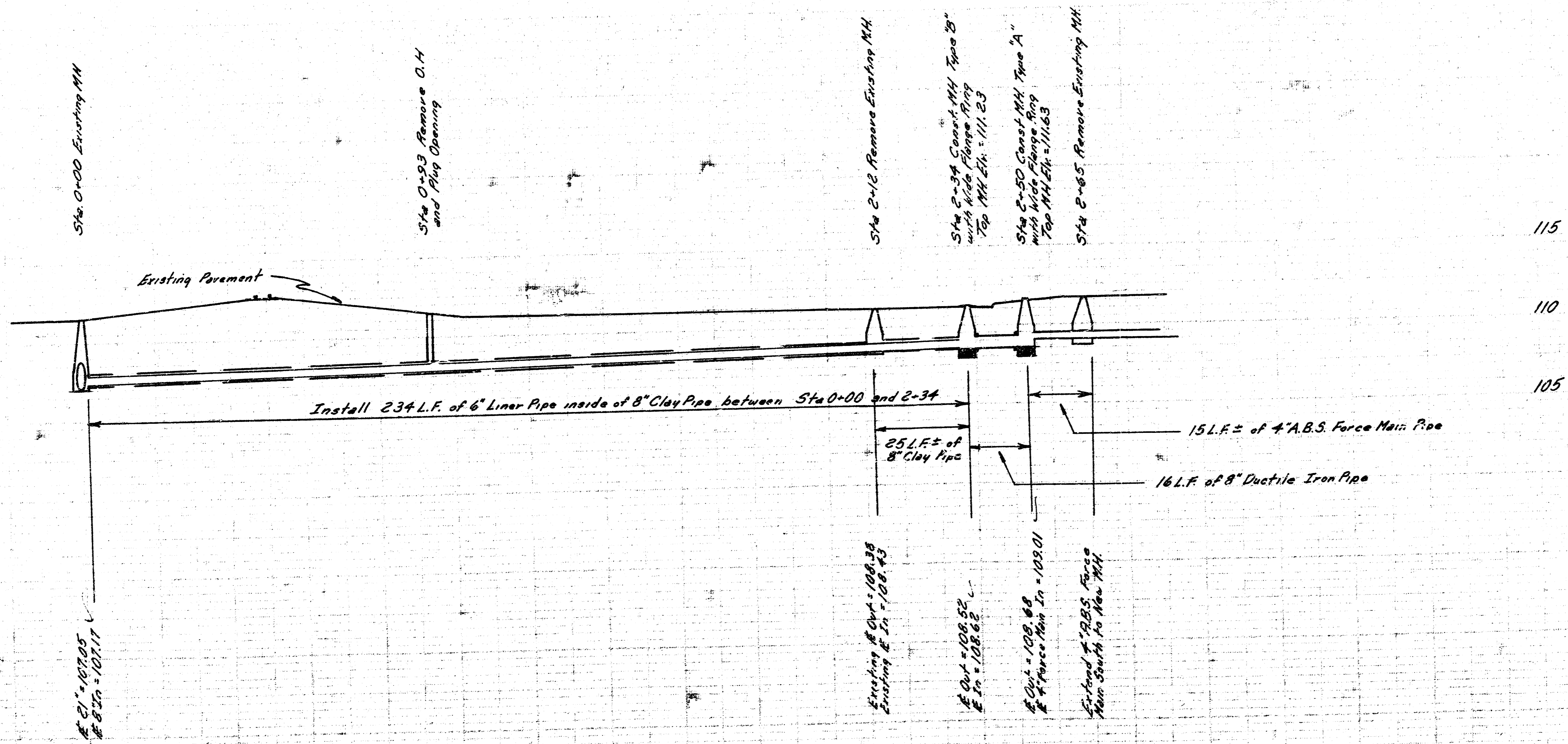
SCALE: 1" = 20' Plan
 Hor. 1" = 20' Profile
 Vert. 1" = 5' Profile



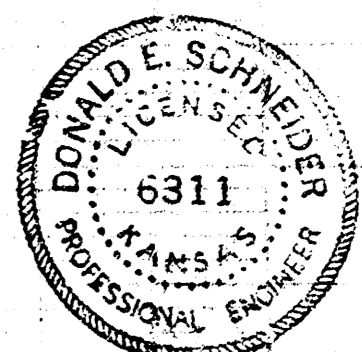
BENCH MARKS:
 111.75 - RR Spike, N. Face PP, SE Cor. WACO & THIRD
 114.07 - NE Cor. curb base RR Signal box SW Cor. THIRD and WICHITA
 112.15 - RR Spike, N. Face PP, SW Cor. THIRD & Riverview

THE CONTRACTOR SHALL BE RESPONSIBLE FOR PRESERVING PROPERTY LINES. THE CONTRACTOR SHALL BE RESPONSIBLE TO RE-ESTABLISH ANY PROPERTY LINES WHICH ARE DAMAGED OR DESTROYED BY HIS CONSTRUCTION OPERATIONS. SUCH LINES SHALL BE RE-ESTABLISHED BY A LICENSED LAND SURVEYOR OR A LICENSED PROFESSIONAL ENGINEER IN ACCORDANCE WITH STATE LAWS.

NOTE: FORCE MAIN PIPE SHALL BE EXTENDED SOUTH TO NEW MANHOLE IN SUCH A MANNER WHICH WILL PRECLUDE THE NECESSITY FOR REMOVING ANY FENCE ALONG THE NORTH RIGHT OF WAY LINE OF THIRD STREET.



As Built
1/82
JJJ



Reconstruction of a portion of West Submain A, Sanitary Sewer No. 1, in Third St. from Wichita to 140' west of Wichita.
 CITY OF WICHITA, KANSAS
 R. W. BRUGGEMAN
 DIRECTOR OF ENGINEERING / CITY ENGINEER
 PROJ. NO. 468-76-245-81126-000-000-001
 Sheet 1 of 1