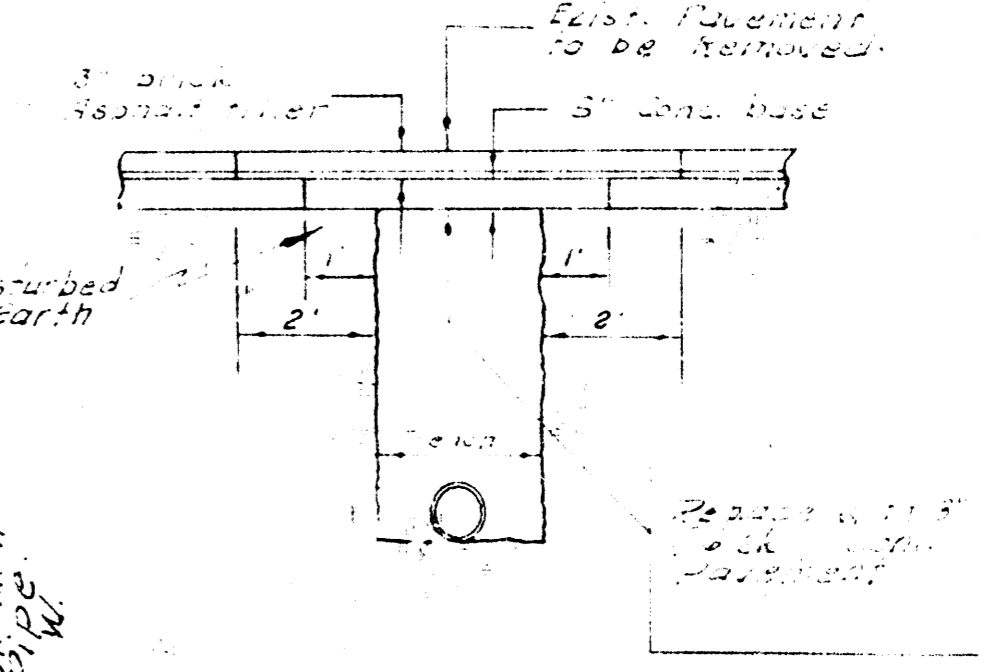
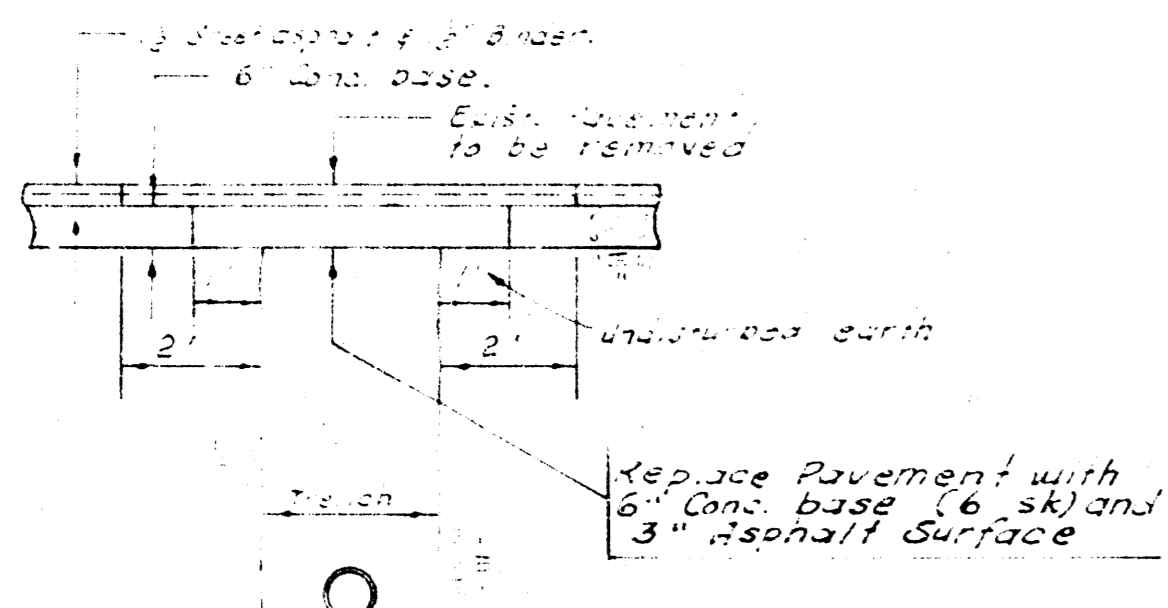


NOTE:
 Exist. Pavement with brick
 surface shall be replaced
 with 8" 16 sq. Cons.
 Pavement

NOTE:
 S.W. Bell Tele. Co. when
 construction begins near underground
 conduit,
 call: Clayton Smith
 Ph. No. 463-1911, Ext. 102

NOTE:
 Pipe plugs are to incidental
 to bid price of manholes
 removed



REPAIR AND RECONSTRUCTION OF
 PORTION OF EAST SUBMAIN B, S. S. NO. 1
 LYING IN LEWIS ST FROM ALLEY WEST OF
 TOPEKA AVE. TO ALLEY EAST OF TOPEKA AVE.
 CITY OF WICHITA, KANSAS
 R. W. LINN - CITY ENGINEER
 APRIL 1972 PROJECT NO. DBK L 5 71 019