

NOTE: See also sheet 57-103-104 for details of sewer main and manholes.

NOTE: See also sheet 57-103-104 for details of sewer main and manholes.

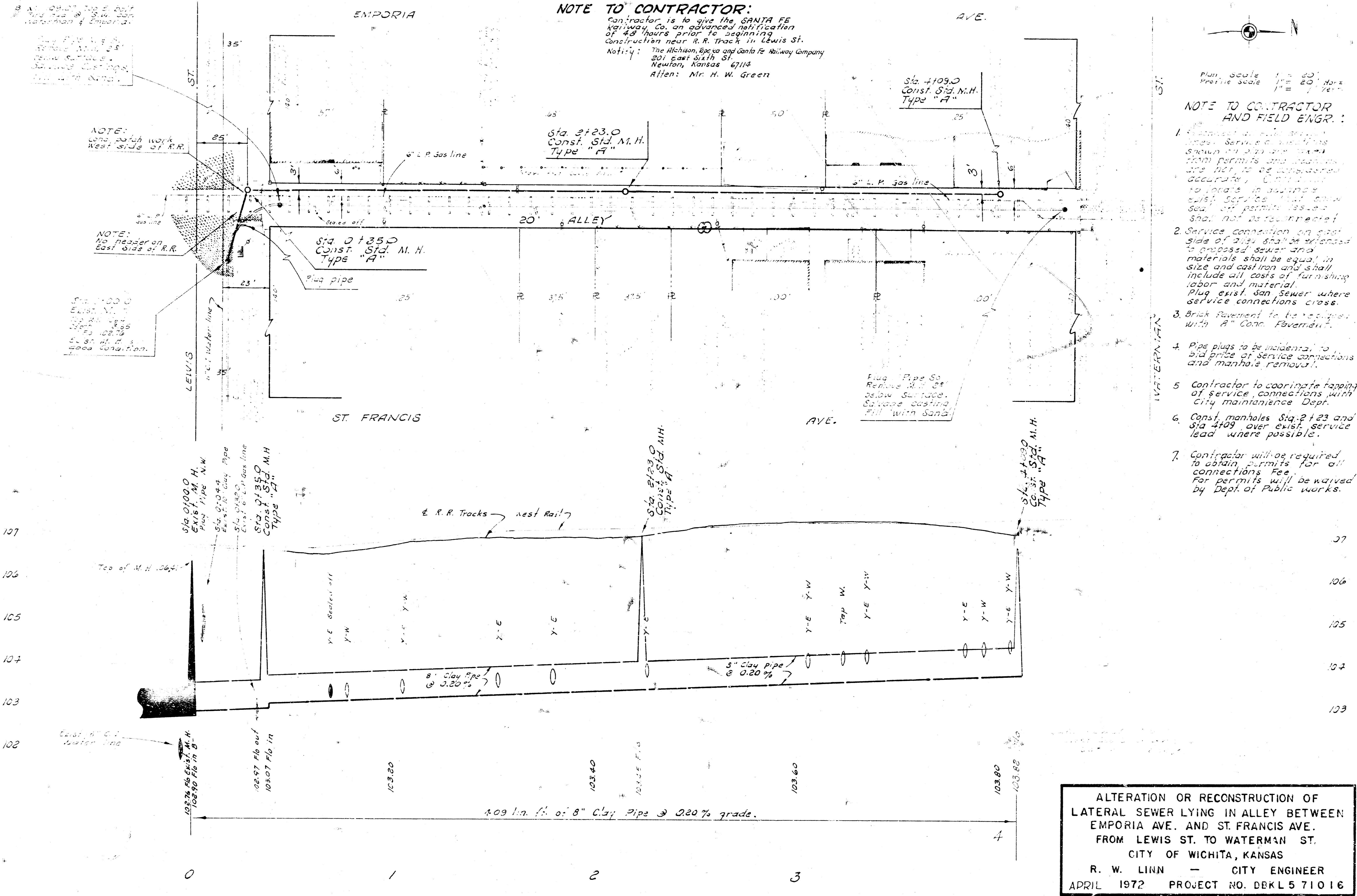
NOTE: No Header on East side of R.R.

NOTE: See also sheet 57-103-104 for details of sewer main and manholes.

NOTE TO CONTRACTOR:
 Contractor is to give the SANTA FE Railway Co. an advanced notification of 48 hours prior to beginning construction near R. R. Tracks in Lewis St. Notify: The Atchison, Topeka and Santa Fe Railway Company
 201 East Sixth St.
 Newton, Kansas 67114
 Attn: Mr. H. W. Green

Plan Scale 1" = 20'
 Profile Scale 1" = 20' Vert.
NOTE TO CONTRACTOR AND FIELD ENGR.:

1. Contractor to provide all necessary service connections shown on this plan and obtain all necessary permits and approvals and they to be considered accurate. Contractor to locate and provide all service connections shown on permits issued. Shall not be responsible.
2. Service connection on east side of alley shall be extended to proposed sewer and materials shall be equal in size and cast iron and shall include all costs of furnishing labor and material. Plug exist. San Sewer where service connections cross.
3. Brick pavement to be replaced with "A" Conc. Pavement.
4. Pipe plugs to be incidental to bid price of service connections and manhole removal.
5. Contractor to coordinate tapping of service connections with City maintenance Dept.
6. Const. manholes Sta. 2123 and Sta. 4109 over exist. service lead where possible.
7. Contractor will be required to obtain permits for all connections. Fee for permits will be waived by Dept. of Public Works.



ALTERATION OR RECONSTRUCTION OF
 LATERAL SEWER LYING IN ALLEY BETWEEN
 EMPORIA AVE. AND ST. FRANCIS AVE.
 FROM LEWIS ST. TO WATERMAN ST.
 CITY OF WICHITA, KANSAS
 R. W. LINN — CITY ENGINEER
 APRIL 1972 PROJECT NO. DBKL 5 71016