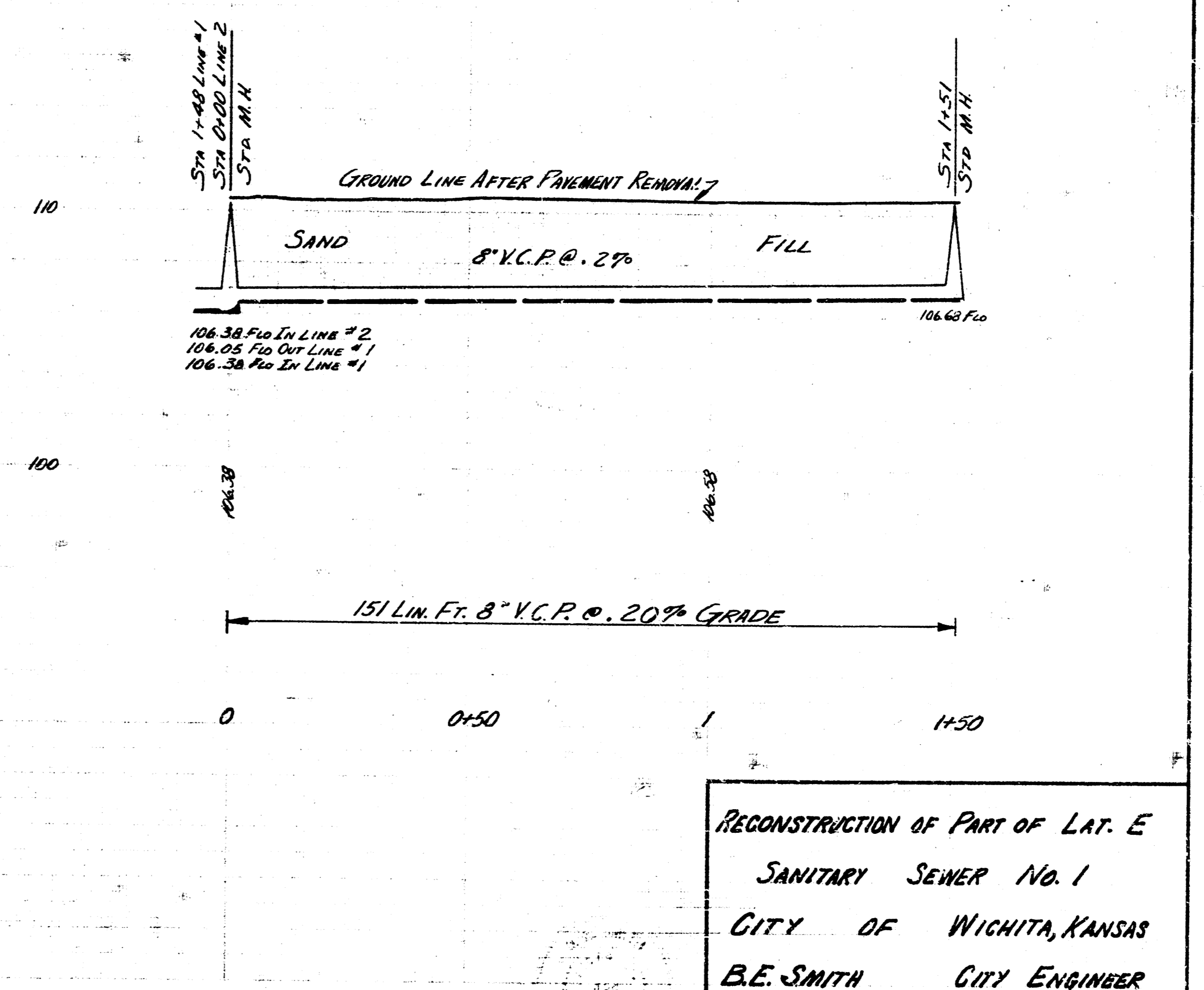
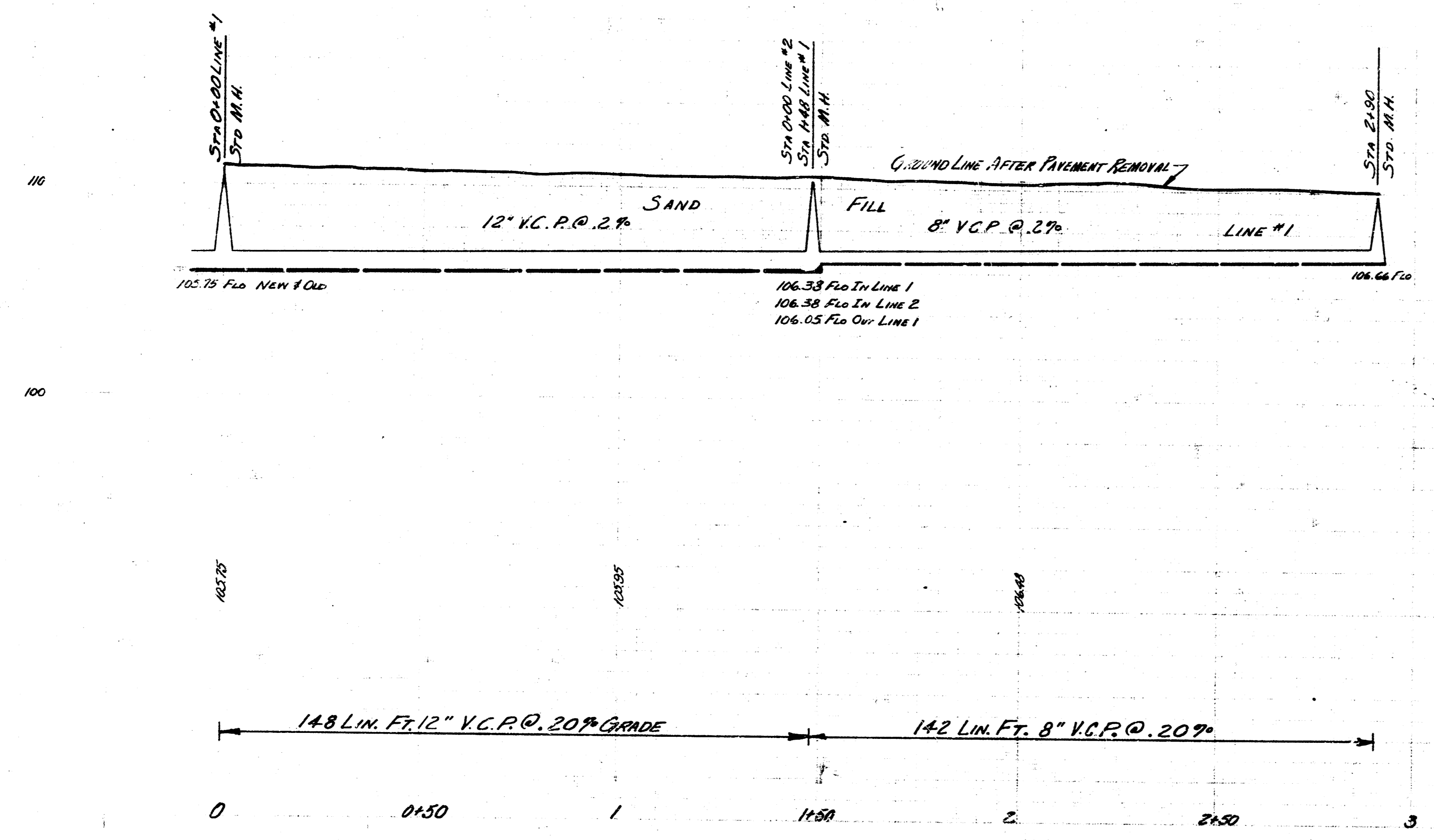
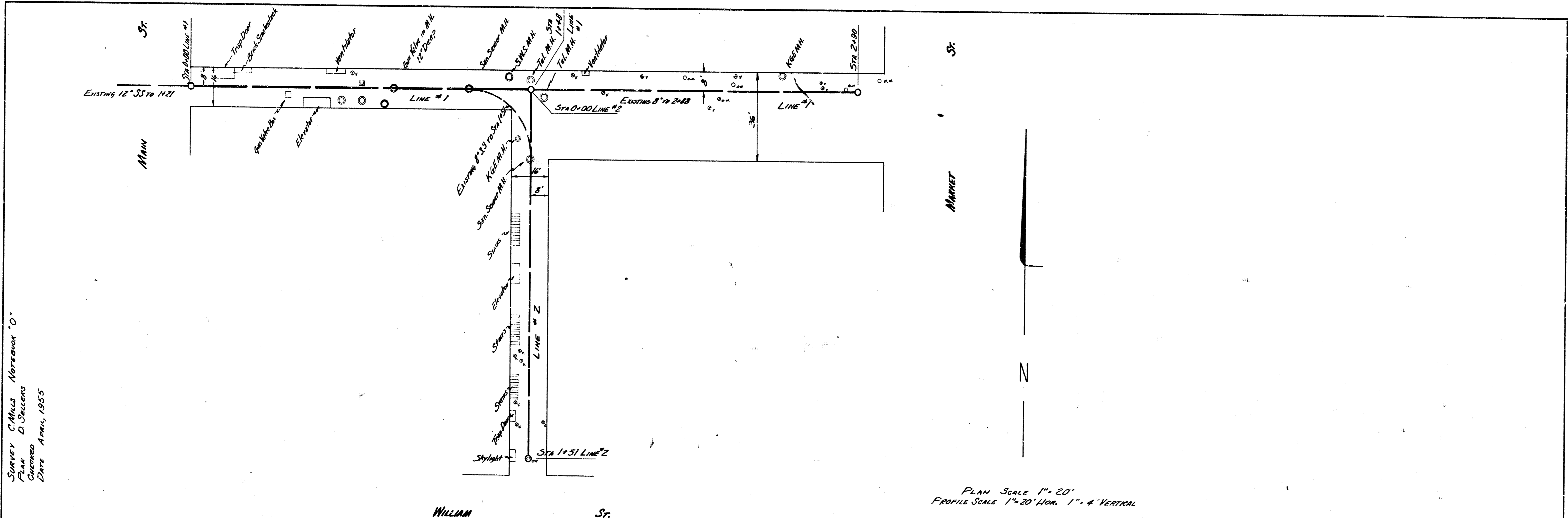


Survey: C. M. McLean  
 Plan: D. Stevens  
 Checked: [Signature]  
 Date: April, 1955

B.M. 11174 N.H. @ NE. Cor. Bldg. S.W. Cor. Market & Douglas  
 B.M. 11215 "X" on C. or Stone Corner N.S. of Alley S. Downst. E.L. of Alley E. of Main



RECONSTRUCTION OF PART OF LAT. E  
 SANITARY SEWER No. 1  
 CITY OF WICHITA, KANSAS  
 B.E. SMITH CITY ENGINEER  
 APRIL, 1955 Proj. No. 624-56