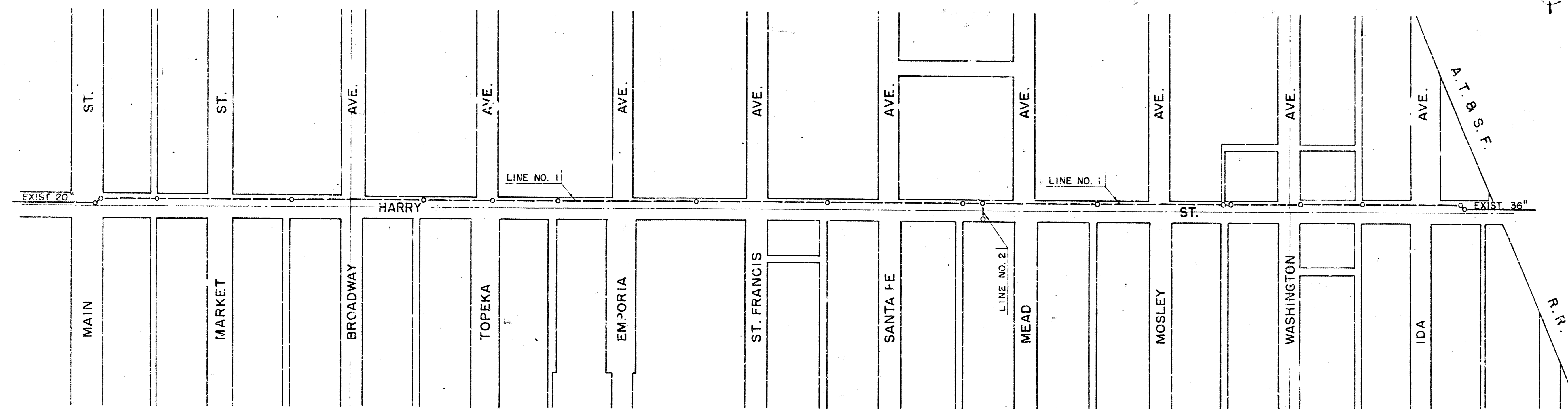
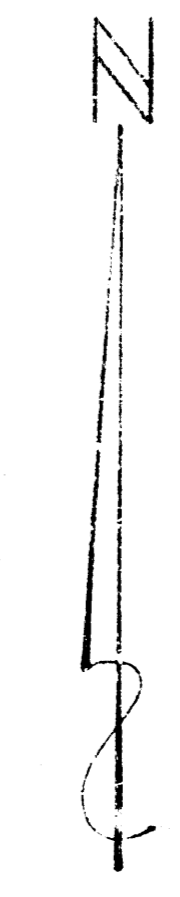
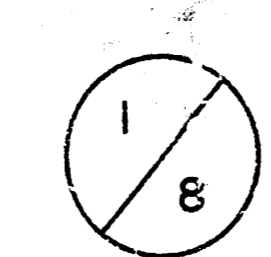


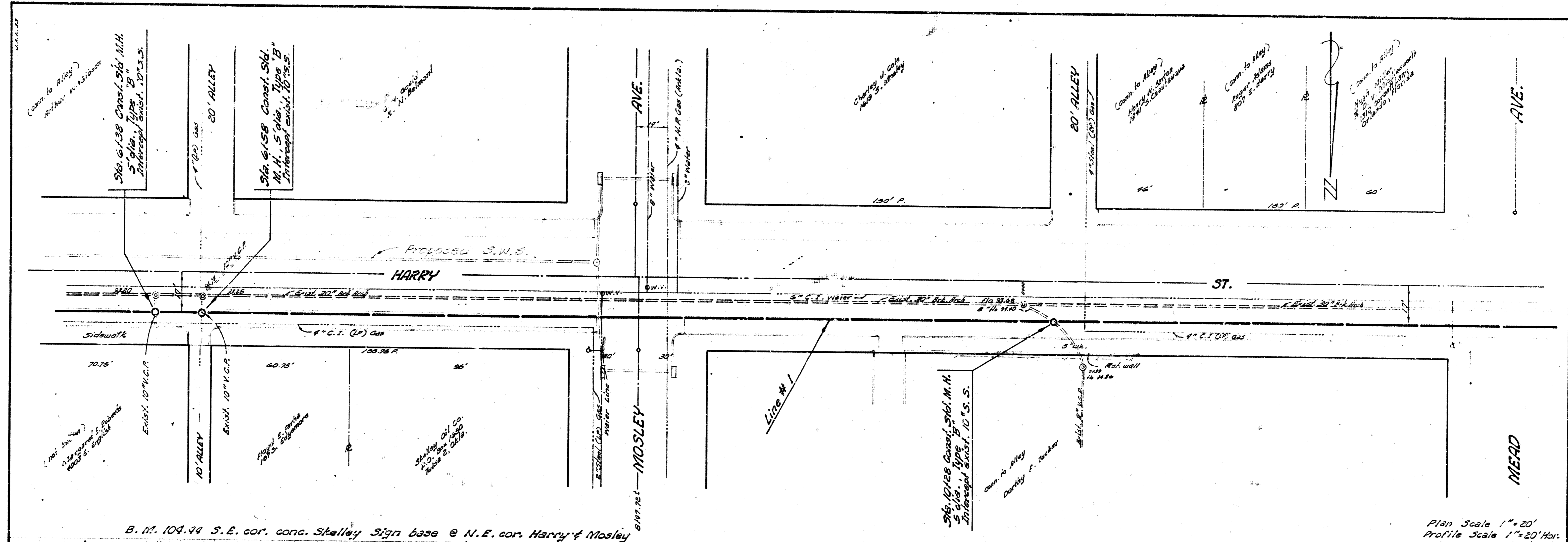
ALTERATION, REPAIR OR RECONSTRUCTION
OF A PORTION OF SANITARY SEWER NO. 1
CITY OF WICHITA
B.E. SMITH CITY ENGINEER PROJECT NO. C25-17



JULY 9, 1965
B. E. SMITH CITY ENGINEER

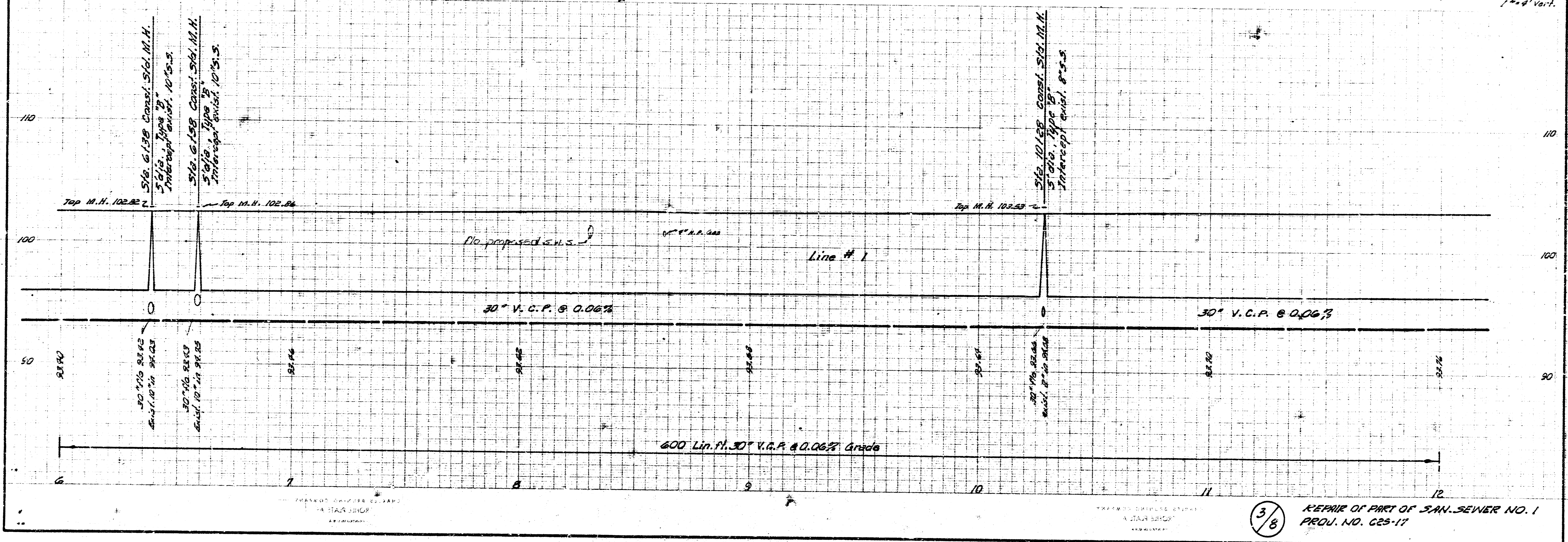


ALTERATION, REPAIR OR RECONSTRUCTION OF A
PORTION OF SANITARY SEWER NO. 1
B. E. SMITH, CITY ENGINEER
CITY OF WICHITA, KANSAS
PROJECT NO. C25-17 DATE

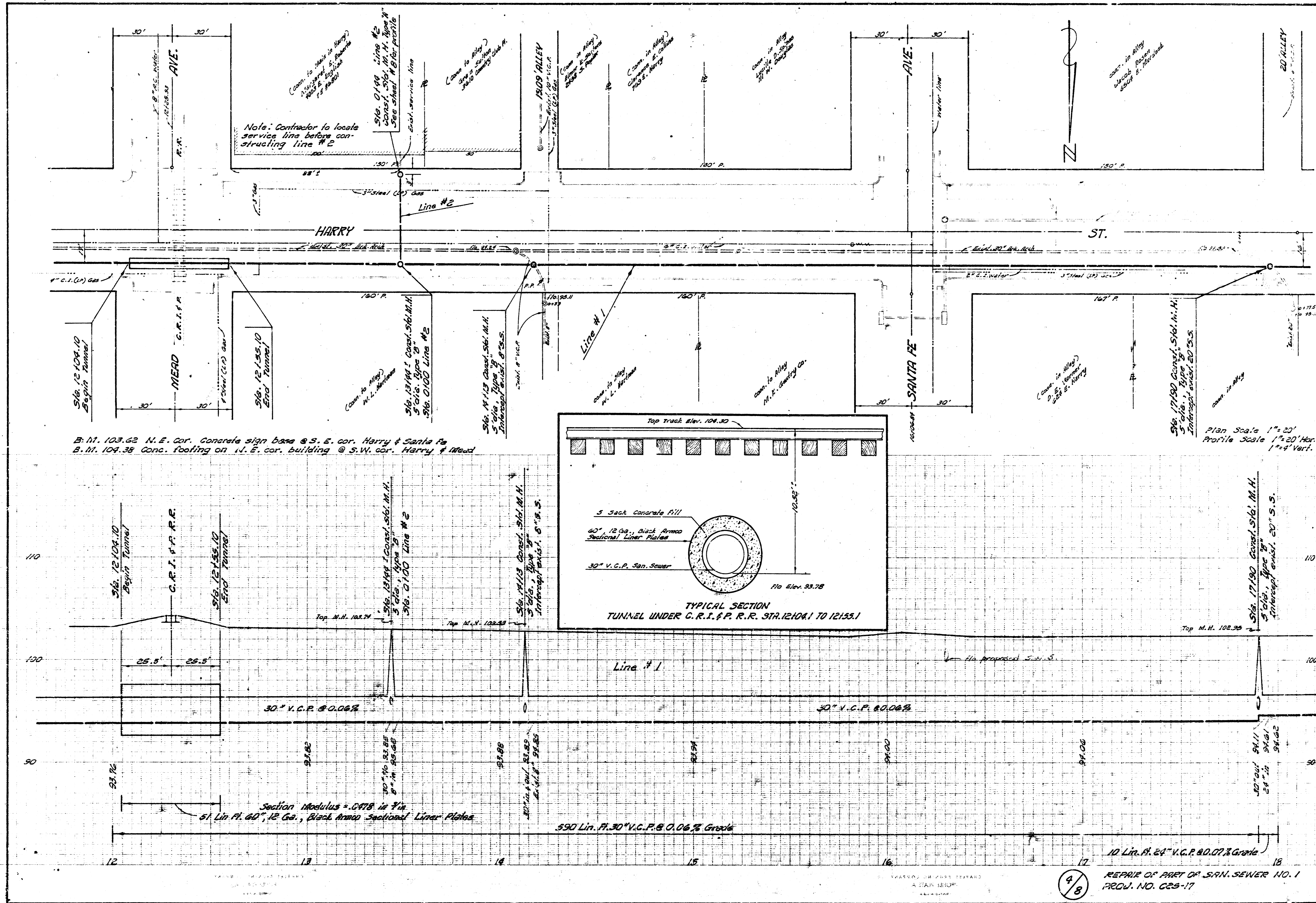


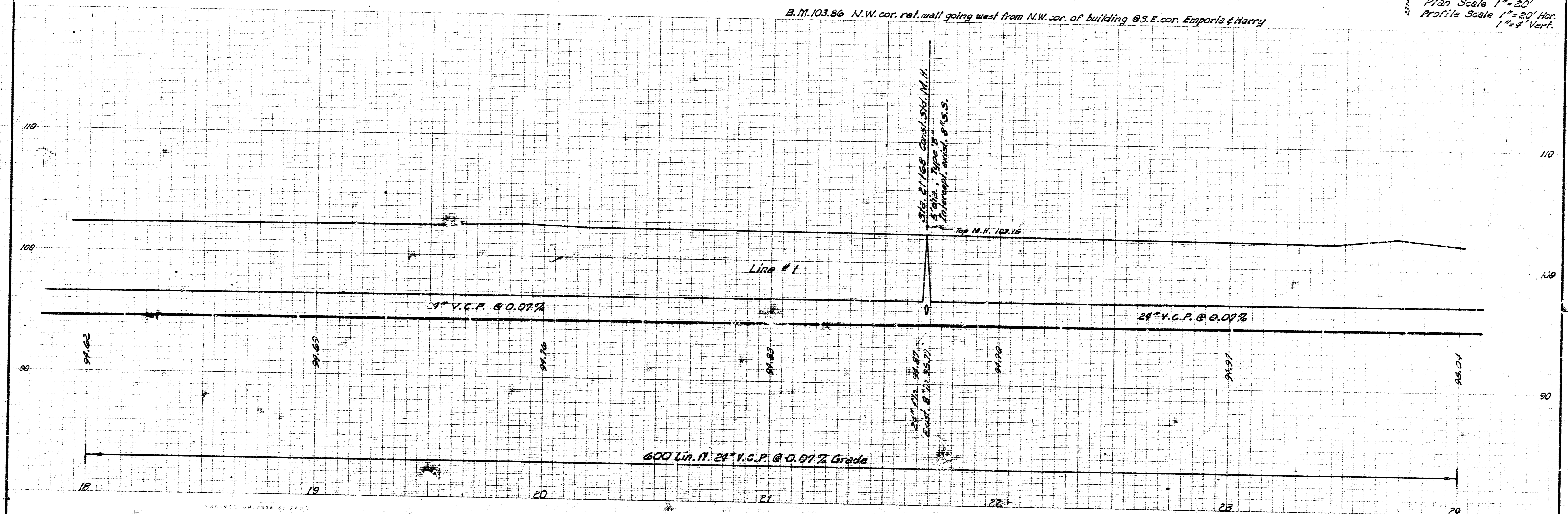
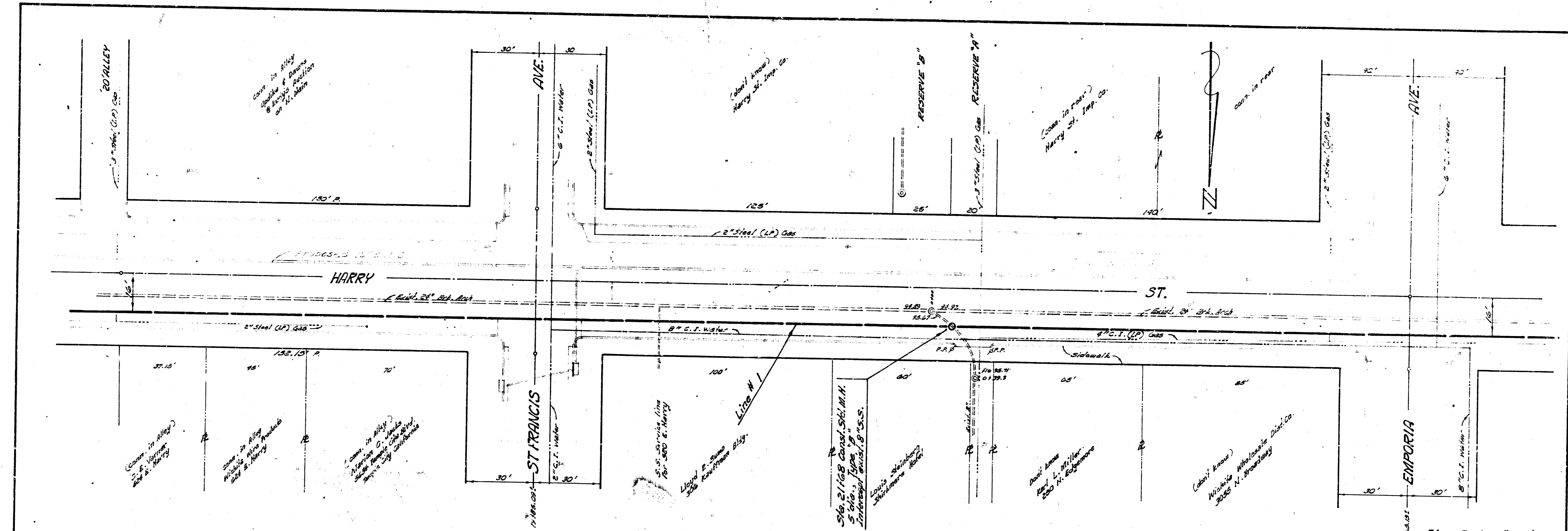
B. M. 104.99 S.E. cor. conc. Stalley sign base @ N.E. cor. Harry & Mosley

Plan Scale 1" = 20'
Profile Scale 1" = 20' Vert.

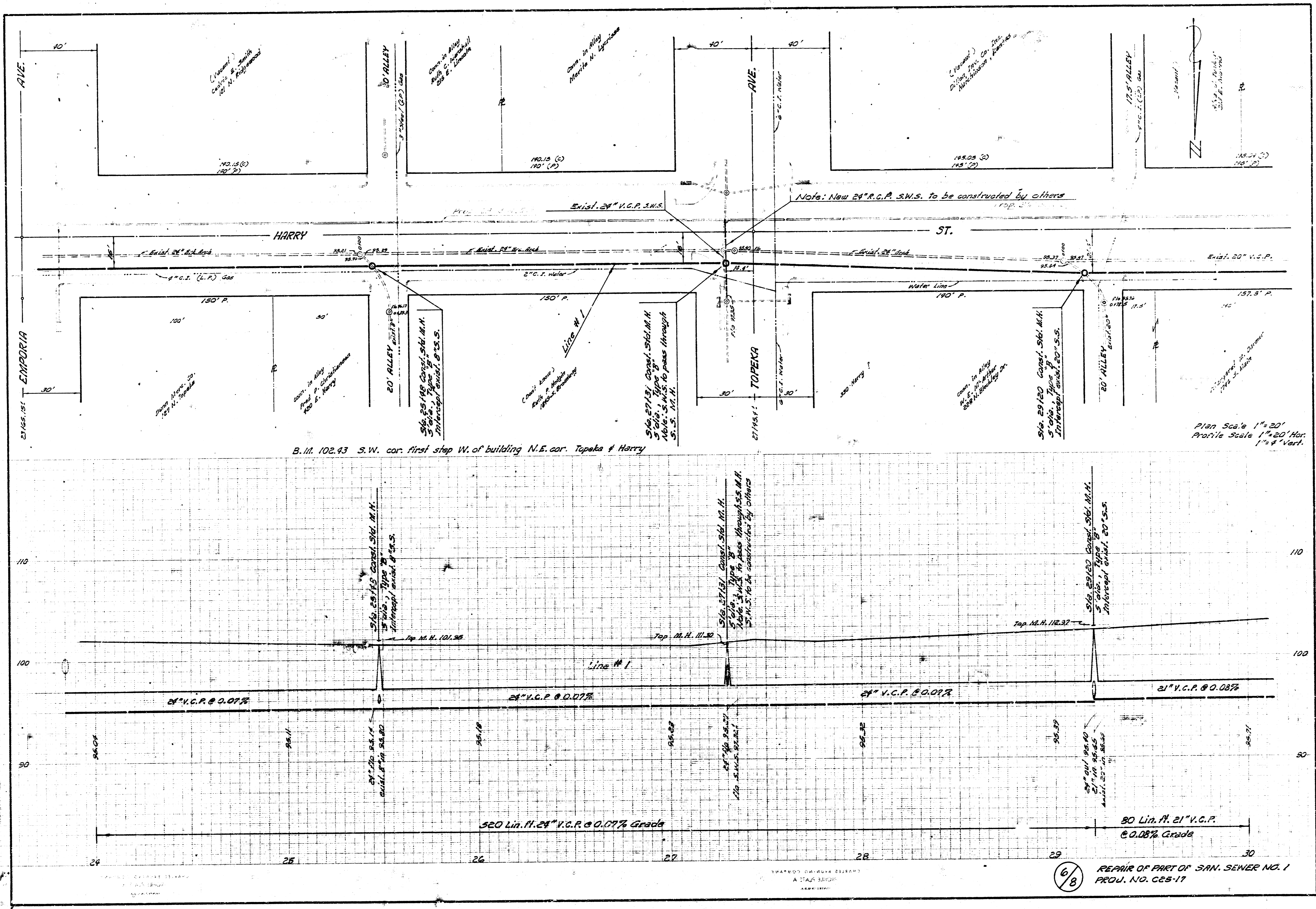


3/8 REPAIR OF PART OF SAN. SEWER NO. 1
PROJ. NO. 623-17

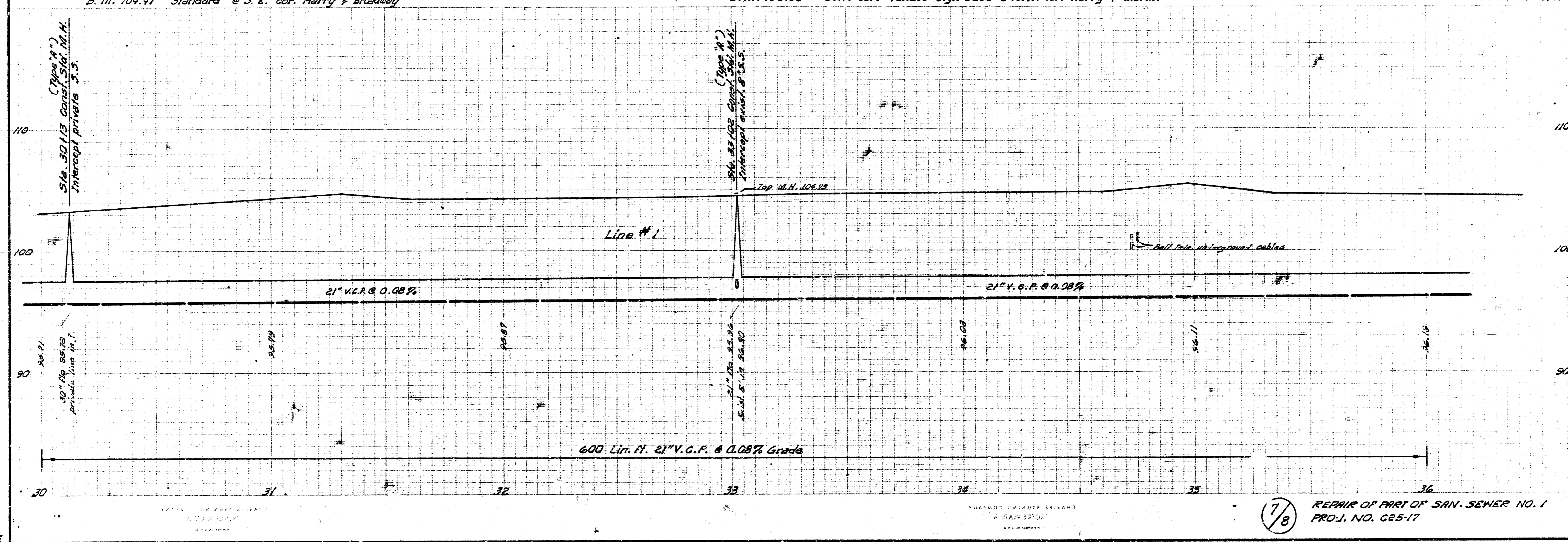
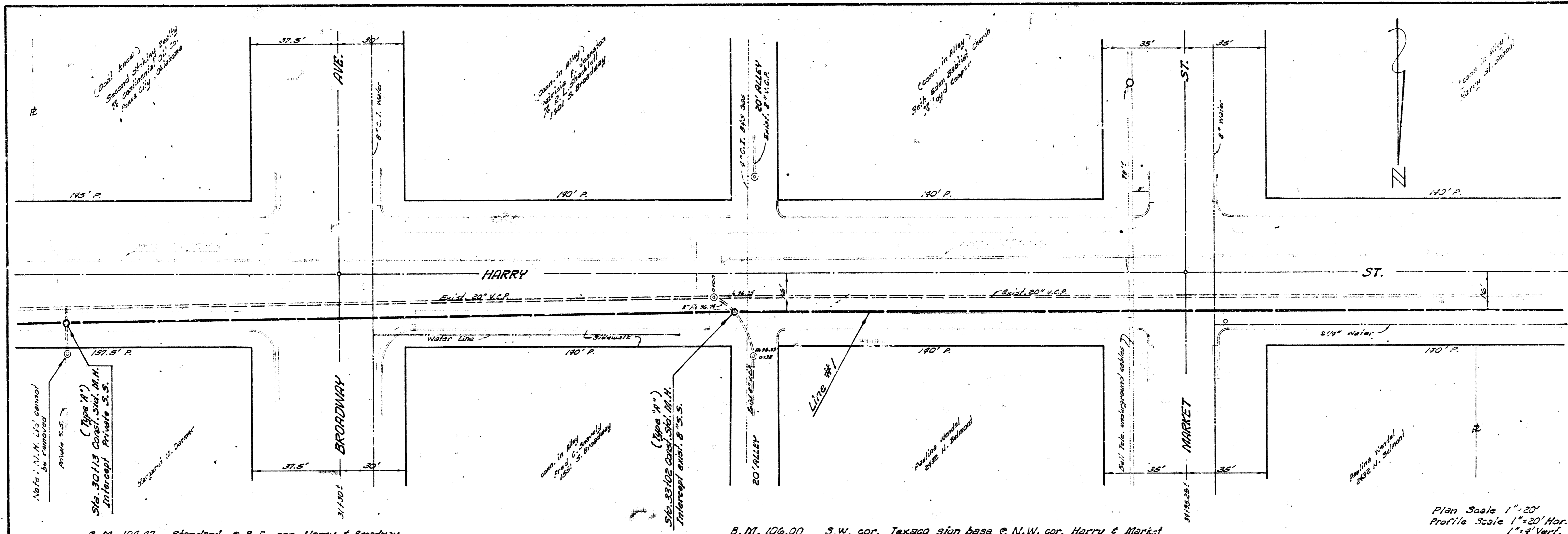




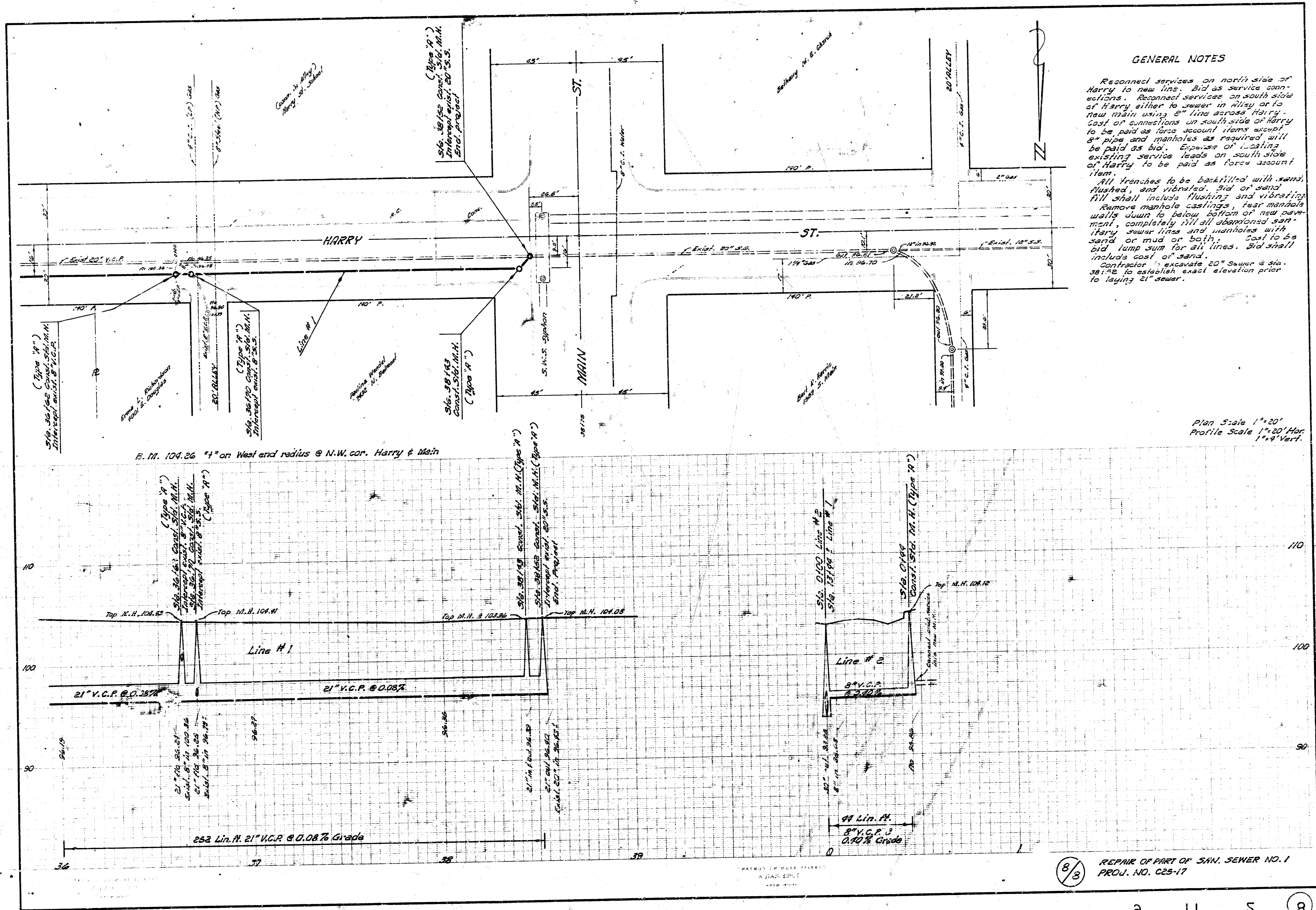
5/8 REPAIR OF PART OF SEWER NO. 1 PROJ. NO. 625-17



6/8 REPAIR OF PART OF SAN. SEWER NO. 1
 PROJ. NO. C25-17



7/8 REPAIR OF PART OF SAN. SEWER NO. 1
PROJ. NO. 625-17



GENERAL NOTES

Reconnect services on north side of Harry to new line. Bid as service connections. Reconnect services on south side of Harry either to sewer in Alley or to new main using 2" line across Harry. Cost of connections on south side of Harry to be paid as force account items except 8" pipe and manholes as required will be paid as bid. Expense of locating existing service leads on south side of Harry to be paid as force account item.

All trenches to be backfilled with sand, plugged, and vibrated. Bid on sand. All shall include flushing and vibrating.

Remove manhole castings, tear mandrel walls down to below bottom of new pavement, completely fill all abandoned sanitary sewer lines and manholes with sand or mud or both. Cost to be bid lump sum for all lines. Bid shall include cost of sand.

Contractor to excavate 20" sewer @ sta. 38+28 to establish exact elevation prior to laying 21" sewer.

Plan Scale 1"=20'
 Profile Scale 1"=20' Hor.
 1"=4' Vert.

REPAIR OF PART OF SAN. SEWER NO. 1
 PROJ. NO. C25-17