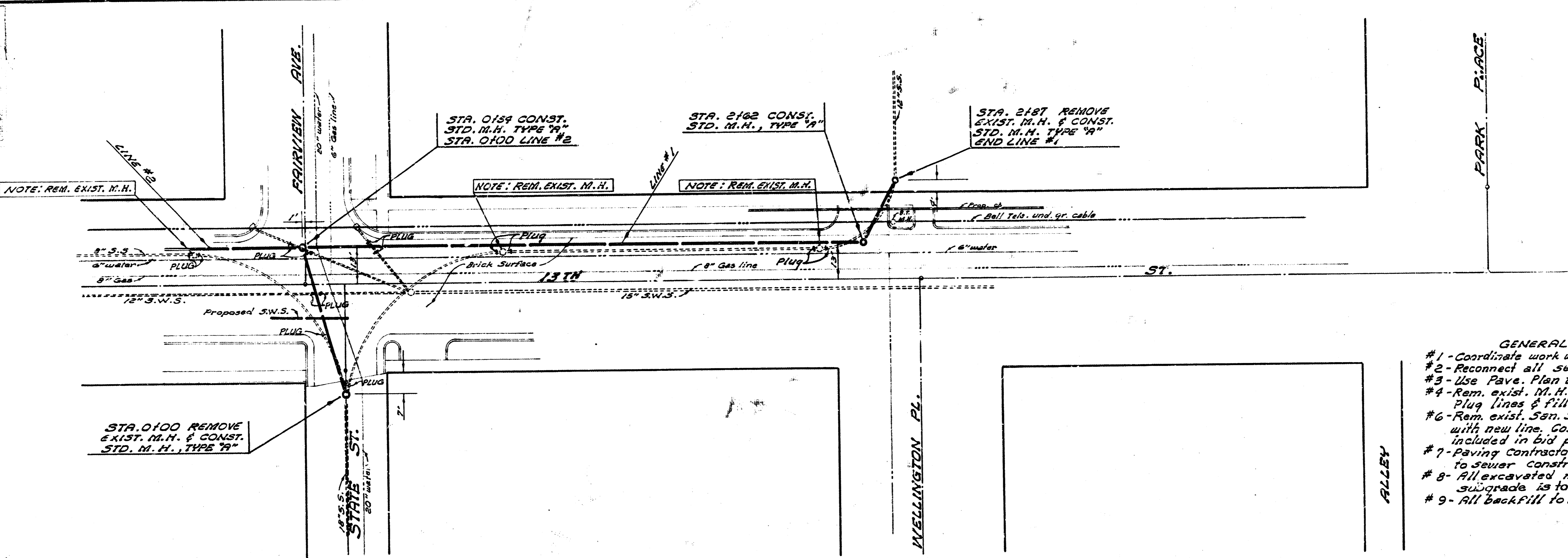
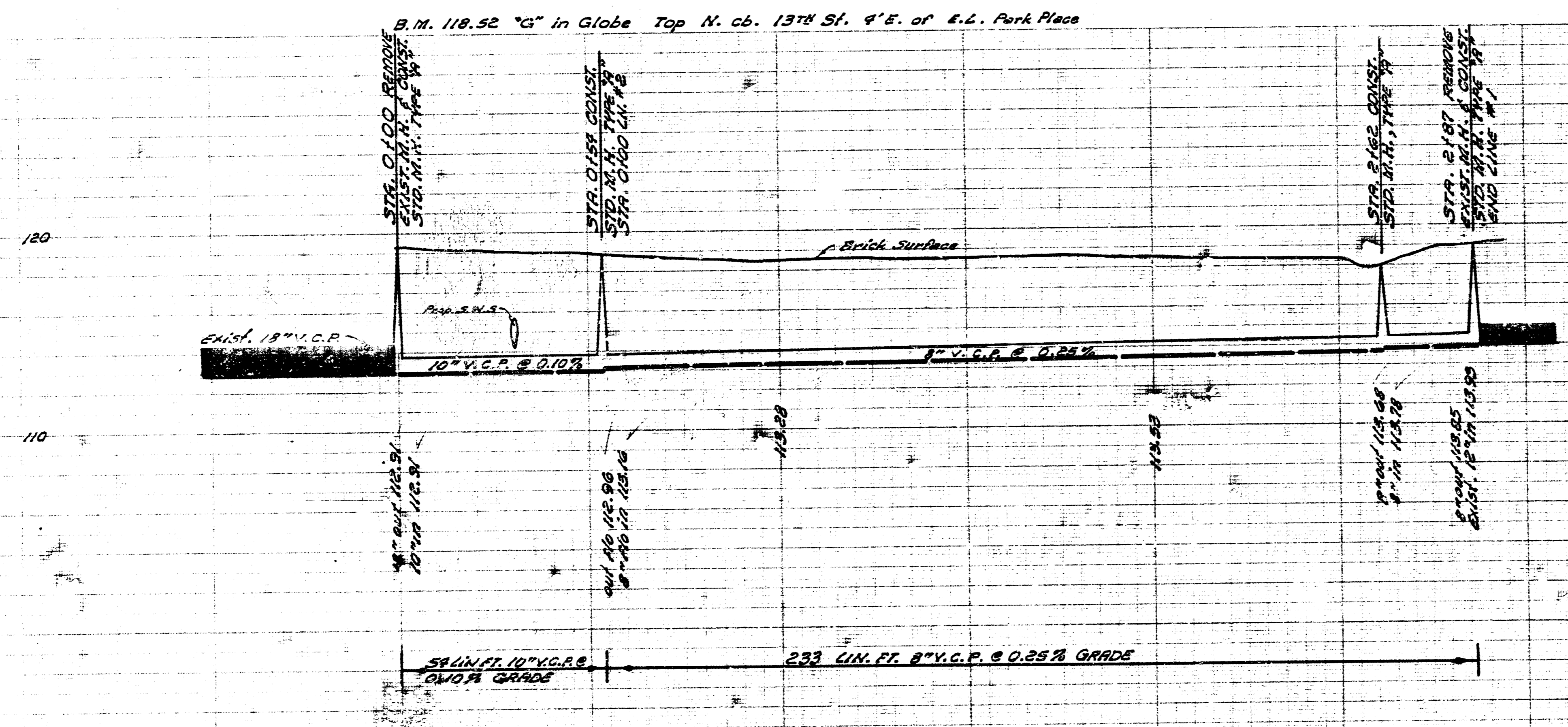


J. Glanz
D. Cramer
L. Agne



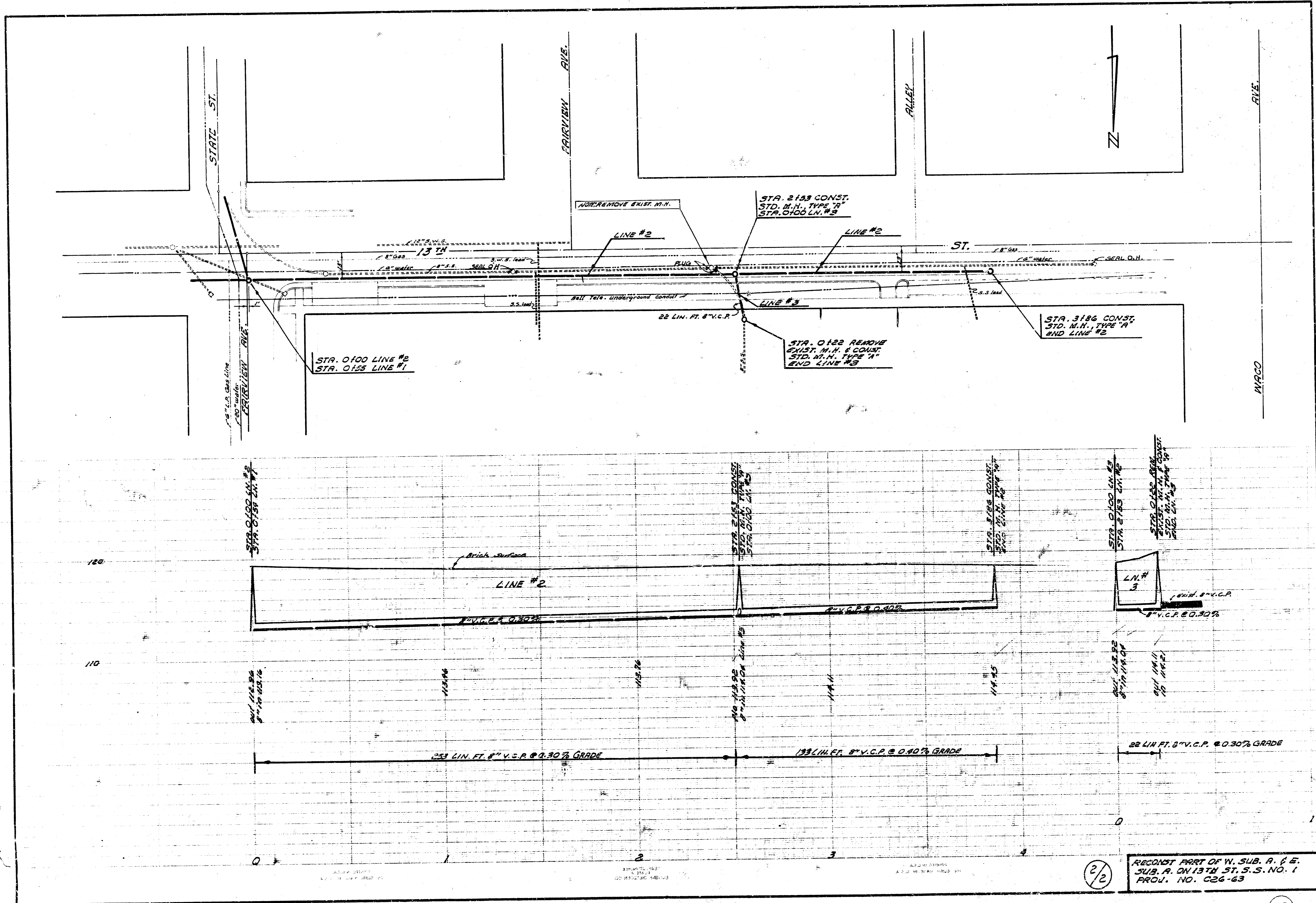
- GENERAL NOTES**
- #1 - Coordinate work with other Contractors.
 - #2 - Reconnect all services.
 - #3 - Use Pave. Plan to establish top M.H. Elev.
 - #4 - Rem. exist. M.H.'s to below bottom of pave. Plug lines & fill with Sand.
 - #6 - Rem. exist. San. Sewer where it conflicts with new line. Cost of Removal to be considered included in bid price of pipe.
 - #7 - Paving Contractor will remove pavt. prior to sewer construction.
 - #8 - All excavated material suitable for pave. subgrade is to be left on the site.
 - #9 - All backfill to be Sand.

Plan Scale 1"=20'
Profile Scale 1"=20' Hor.
1"=4' Vert.



RECONST PART OF W. SUB. A, & E. SUB. A. ON 13TH ST. S.S. NO. 1. CITY OF WICHITA, KANSAS
B. E. SMITH, CITY ENGINEER
PROJECT NO. C26-63
DATE: AUG. 1966

1/2



2/2

RECONSTRUCT PART OF W. SUB. P. C. E. SUB. P. ON 13TH ST. S.S. NO. 1 PROJ. NO. 226-63