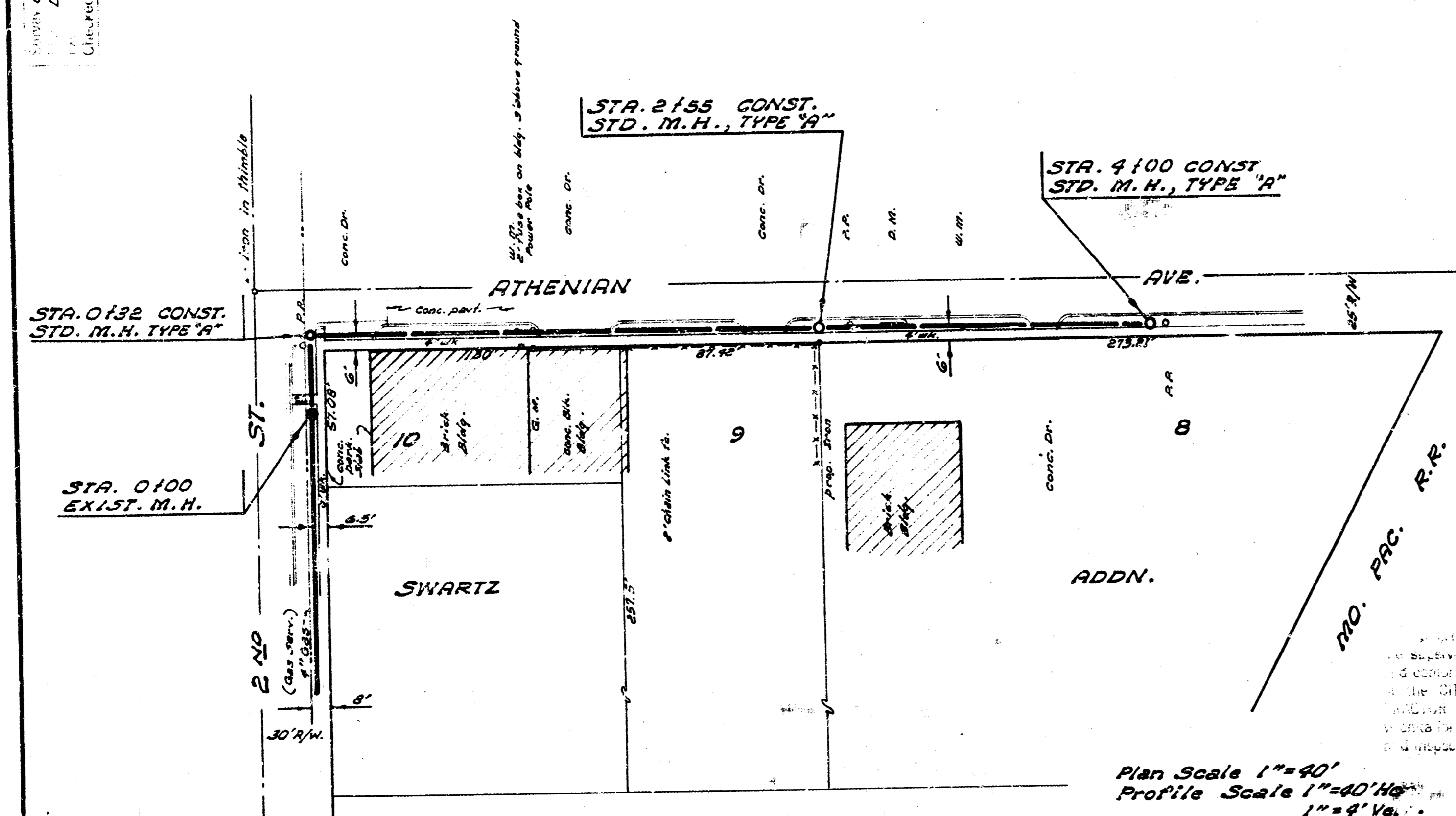
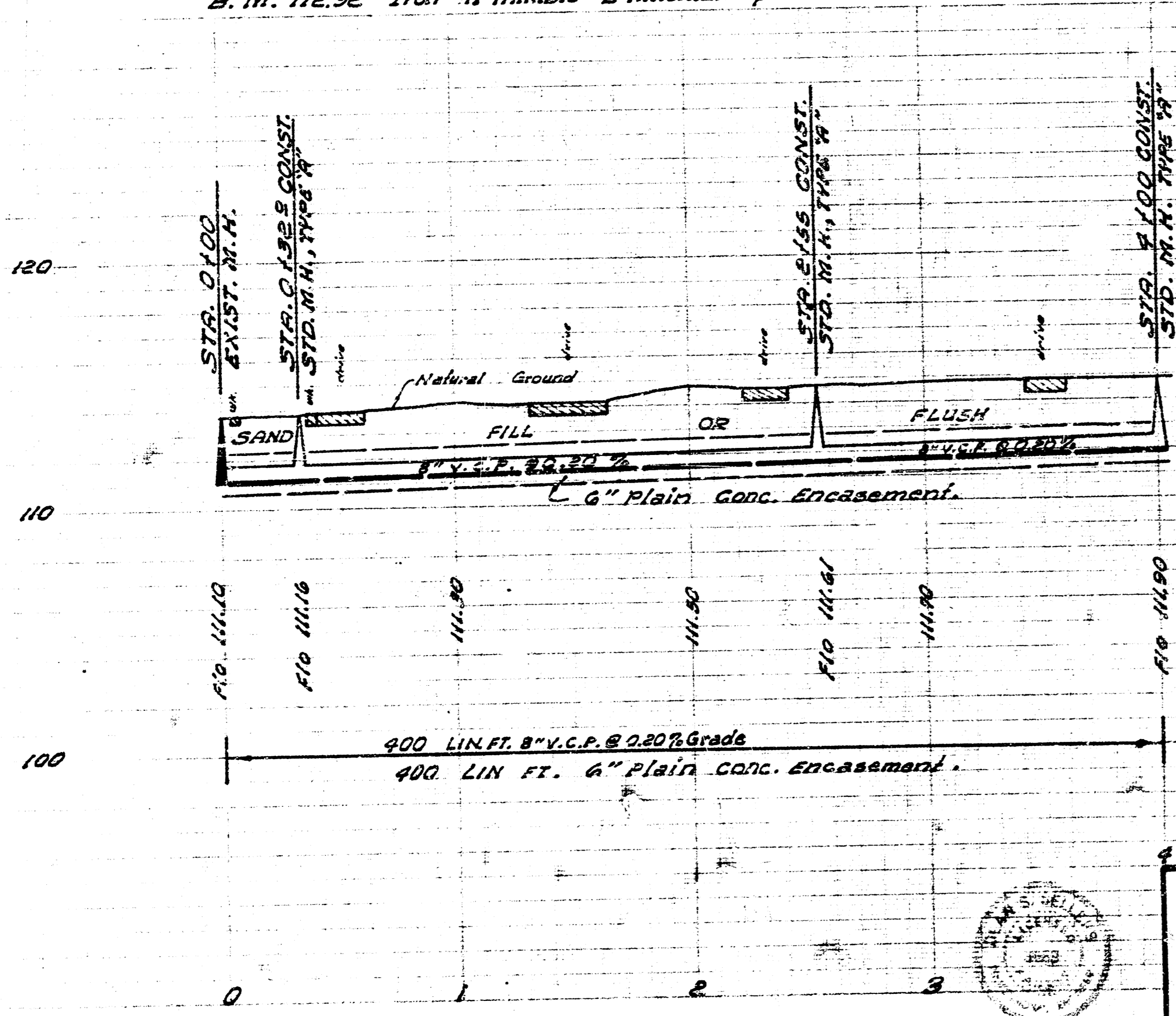


Drawn by G. H. Harty  
 Checked by D. Cranner  
 Like No.

- GENERAL NOTES:**
- #1 - All backfill to be sand
  - #2 - Replace curbs, sidewalks & curbs
  - #3 - 8" V.C.P. to be encased in 5" plain conc. encasement.
  - #4 - call utility co's before beginning construction



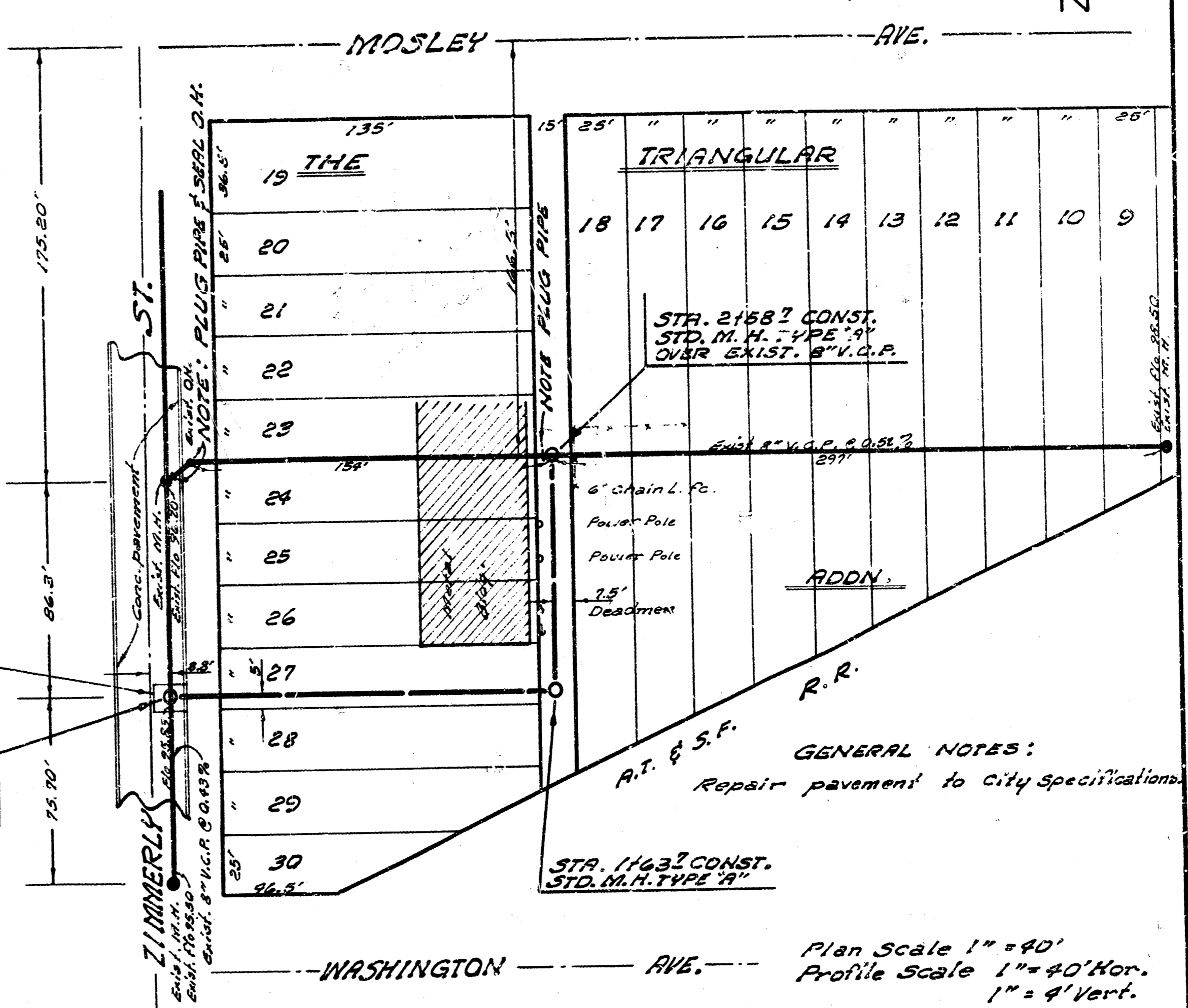
B.M. 112.92 Iron in thimble @ Athenian @ 272



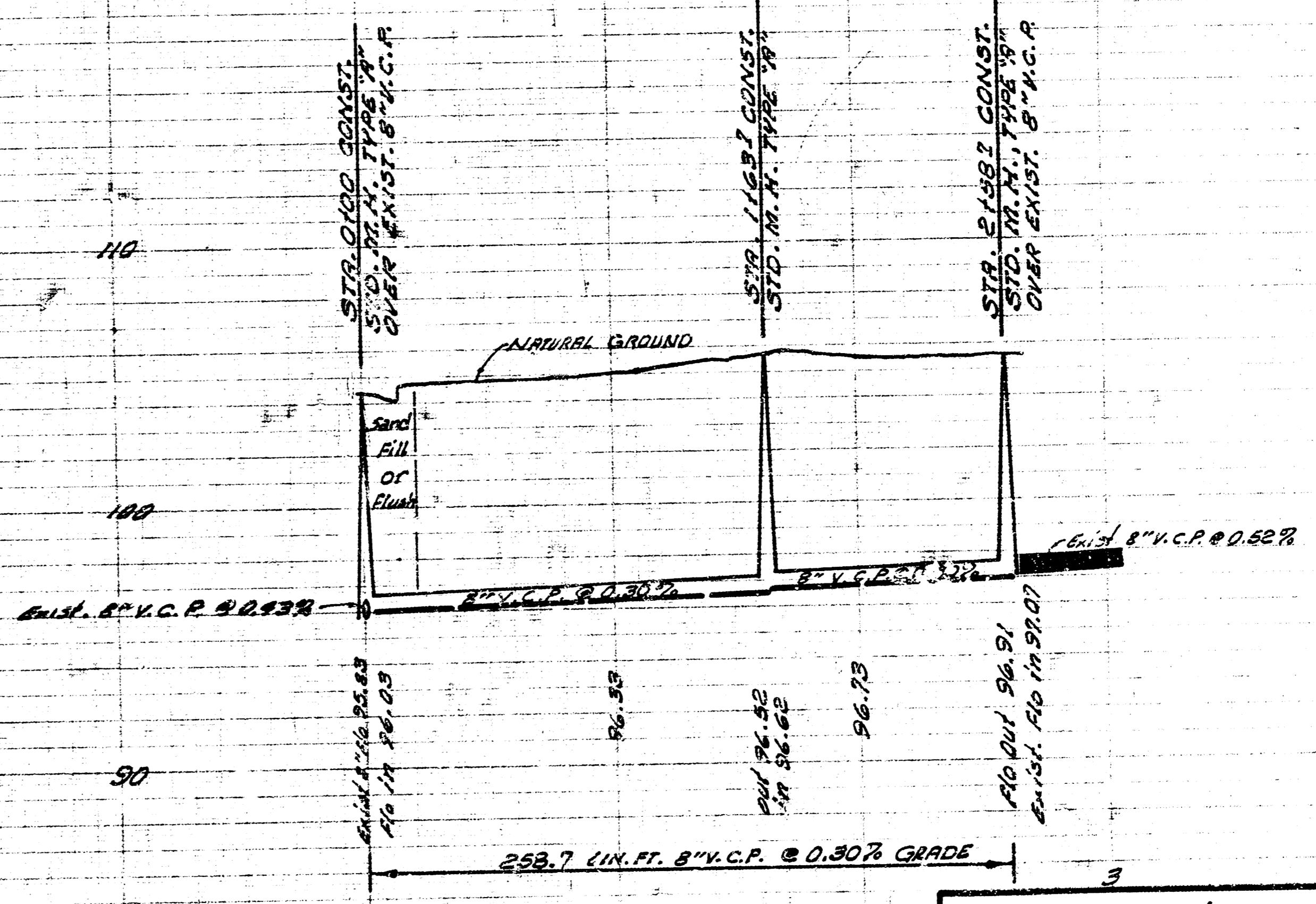
EXT. TO LAT. A, DIST. 8, S.S. #8  
 CITY OF WICHITA, KANSAS  
 B. E. SMITH, CITY ENGINEER  
 PRIVATE PROJECT  
 DATE: SEPT. 1966

Drawn by G. H. Harty  
 Checked by D. Cranner

**NOTE TO CONTRACTOR**  
 This project will be constructed under the supervision of the CITY ENGINEER and conforming to the SPECIFICATIONS of the CITY OF WICHITA. The CONTRACTOR will reimburse the City of Wichita for all cost of Engineering, Plans and Inspection.



B.M. 105.19 "G" IN GLOBE TOP W. CB. MOSLEY @ N.L. ZIMMERLY



RECONSTRUCTION & RELOCATION OF A PORTION OF SUB. MAIN WEST OF "C" ON ZIMMERLY ST. @ LAT. NORTH, S.S. #1 CITY OF WICHITA, KANSAS  
 B. E. SMITH, CITY ENGINEER  
 PRIVATE PROJECT  
 DATE: 10-7-1966