

# RECONSTRUCTING A PORTION OF SANITARY SEWER NO. 8

IN THE ALLEY BETWEEN SENECA ST. AND WALNUT ST. FROM MO. PAC. RR TO SECOND ST.

PROJECT NO. 468-76-245-81471-000-000-001

## CITY OF WICHITA, KANSAS

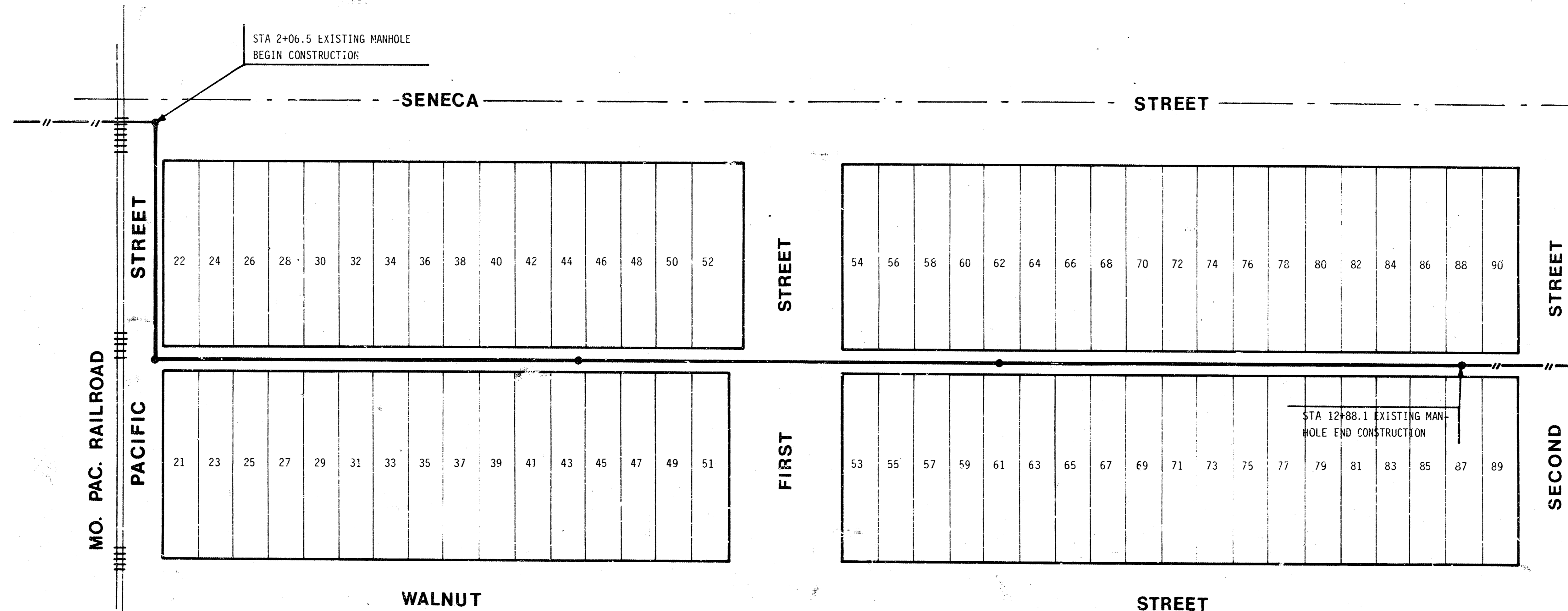
MIKE LINDEBAK, CITY ENGINEER

### GENERAL NOTES:

1. ALL CONSTRUCTION AND MATERIALS TO COMPLY WITH CITY OF WICHITA SPECIFICATIONS AND STANDARDS.
2. ALL UTILITY LOCATIONS ARE APPROXIMATE. CONTRACTOR SHALL COORDINATE WITH RESPECTIVE UTILITY OWNERS TO FIELD LOCATE UTILITY BEFORE BEGINNING EXCAVATIONS.
3. THE CONTRACTOR SHALL GIVE ALL PROPERTY OWNERS AND/OR TENANTS OF DEVELOPED PROPERTY DIRECTLY AFFECTED BY THE CONSTRUCTION OF THIS PROJECT A MINIMUM OF 24 HOURS ADVANCE NOTICE PRIOR TO START OF CONSTRUCTION.
4. TELEVISION TAPES AND LOGS OF THIS SEWER LINE ARE AVAILABLE FROM THE CITY SEWER MAINTENANCE DIVISION.
5. IF DAMAGED DURING CONSTRUCTION, EXISTING MANHOLES, SEWER LINES AND OTHER APPURTENANCES TO REMAIN IN SERVICE SHALL BE REPAIRED TO ORIGINAL CONDITION WITHOUT ADDITIONAL COST TO THE OWNER.
6. THE CONTRACTOR SHALL BE RESPONSIBLE FOR MAINTAINING CONTINUOUS FLOW OF SEWAGE THROUGH CONSTRUCTION. CONTRACTOR'S PROPOSED METHOD FOR MAINTAINING SEWAGE FLOW SHALL BE APPROVED BY THE ENGINEER. COST OF MAINTAINING FLOW OF SEWAGE THROUGH CONSTRUCTION WILL NOT BE PAID FOR DIRECTLY AND THIS COST SHALL BE CONSIDERED AS SUBSIDIARY TO THE OTHER ITEMS OF WORK.
7. CONTRACTOR IS RESPONSIBLE FOR OBTAINING THE EXACT LOCATION OF ALL UTILITIES PRIOR TO CONSTRUCTION. CONTRACTOR MUST NOTIFY THE FOLLOWING UTILITY COMPANIES PRIOR TO ANY TRENCHING.  
  
 SOUTHWESTERN BELL TELEPHONE CO. . . . . 1-571-2115  
 CABLEVISION . . . . . 269-3340  
 GAS SERVICE CO. . . . . 263-7511  
 KANSAS GAS AND ELECTRIC . . . . . 261-6375  
 DIG SAFE . . . . . 1-800-344-7283
8. ~~THIS PROJECT IS TO BE BID WITH TWO ALTERNATES. ALTERNATE NO. 1 SPECIFIES COMPLETE REPLACEMENT OF THE EXISTING 8" PIPE. ALTERNATE NO. 2 PROVIDES FOR INSTALLATION OF "INSITUFORM LINER" ON THE ENTIRE PROJECT. EXISTING MANHOLES ARE TO REMAIN ON BOTH OF THE ALTERNATE METHODS OF RECONSTRUCTION.~~
9. SPOT REPAIRS SHALL CONSIST OF REMOVING EXISTING PIPE, REPLACING WITH NEW 8" V.C.P. AND BACKFILLING BEFORE INSTALLING THE "INSITUFORM LINER".
10. OBSERVATION HOLES SHALL BE REMOVED IN ACCORDANCE WITH THE PROVISIONS CONTAINED IN SUBSECTION B OF THE STANDARD SPECIFICATIONS ON PAGE 22 IN CONJUNCTION WITH THE INSITUFORM LINER ALTERNATE. OBSERVATION HOLES WILL NOT BE REPLACED ~~SHALL NOT BE~~.
11. A SAW CUT OF AT LEAST ONE-HALF THE DEPTH OF EXISTING SURFACE COURSES OR ONE-FOURTH THE DEPTH OF THE EXISTING TOTAL PAVEMENT THICKNESS SHALL BE PROVIDED AT LOCATIONS WHERE PROPOSED CONSTRUCTION ABUTS AN EXISTING SURFACE COURSE OR PAVEMENT FOR WHICH PARTIAL REMOVAL OF THAT SURFACE OR PAVEMENT IS REQUIRED. SAWED JOINT TO FACILITATE REMOVAL WITHIN 3 FEET (3') OF EXISTING JOINTS WILL NOT BE PERMITTED AND FOR SUCH INSTANCES THE LIMITS OF REMOVAL SHALL EXTEND TO THE EXISTING JOINT. SUCH SAW CUTS WILL NOT BE PAID FOR DIRECTLY AND THIS COST SHALL BE CONSIDERED AS SUBSIDIARY TO THE REMOVAL OF THE SURFACE OF PAVEMENT.
12. ONLY ACTIVE BUILDING SEWER LINES WHICH CONNECT ACTUAL BUILDINGS TO THE SEWER SYSTEM ARE TO BE RECONNECTED TO THE NEW SEWER CONSTRUCTION. BUILDING SEWER LINES AND/OR CONNECTIONS WHICH HAVE BEEN ABANDONED ARE NOT TO BE RECONNECTED TO THE NEW SEWER CONSTRUCTION. IT WILL BE THE SOLE RESPONSIBILITY OF THE CONTRACTOR TO ASCERTAIN WHICH SUCH BUILDING SEWER LINES AND/OR CONNECTIONS HAVE BEEN ABANDONED. ALL WORK INVOLVED WITH BUILDING SEWER LINE CONSTRUCTION AND/OR BUILDING SEWER CONNECTIONS SHALL CONFORM TO THE APPLICABLE SECTION OF THE STANDARD SPECIFICATIONS.
13. THE CONTRACTOR SHALL BE RESPONSIBLE FOR PRESERVING PROPERTY IRONS. THE CONTRACTOR WILL BE REQUIRED TO RE-ESTABLISH ANY PROPERTY IRONS WHICH ARE DAMAGED OR DESTROYED BY HIS CONSTRUCTION OPERATIONS. SUCH IRONS SHALL BE RE-ESTABLISHED BY A LICENSED LAND SURVEYOR OR A LICENSED PROFESSIONAL ENGINEER IN ACCORDANCE WITH STATE LAWS.
14. ~~PAVEMENT REMOVAL AND/OR REPLACEMENT WILL BE MEASURED AND PAID FOR ON THE LINEAL FOOT BASIS AS MEASURED ALONG THE CENTERLINE OF THE SEWER REGARDLESS OF WIDTH OR THICKNESS. MINIMUM LIMITS OF SUCH PAVEMENT REMOVAL AND REPLACEMENT SHALL BE ONE FOOT BEYOND THE LIMITS OF THE EXCAVATION MADE FOR THE SEWER OR THE STRUCTURE. REMOVAL AND REPLACEMENT OF EXISTING PAVEMENT SHALL CONFORM TO THE APPLICABLE SECTIONS OF THE CITY OF WICHITA STANDARD SPECIFICATIONS.~~

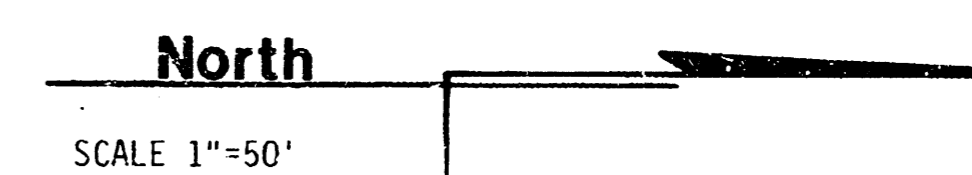
### BENCH MARKS

1. CITY OF WICHITA BENCH MARK DISC, SOUTHEAST CORNER BRIDGE AT SENECA AND ARKANSAS RIVER, ELEVATION 114.90.
2. TOP NW BOLT ON RR SIGNAL BASE, 40'S. AND 17' E. OF MH @ STA 2+06.5, ELEVATION 115.21.



JUNE 1985

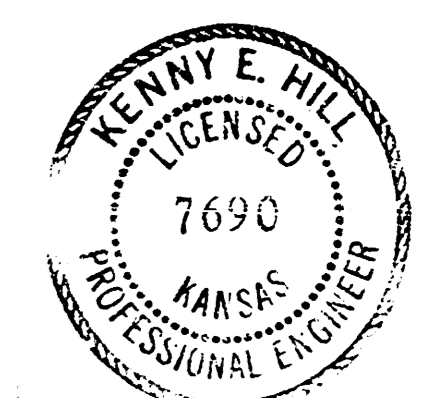
**dp** POE & ASSOCIATES OF KANSAS, INC.  
CONSULTING ENGINEERS



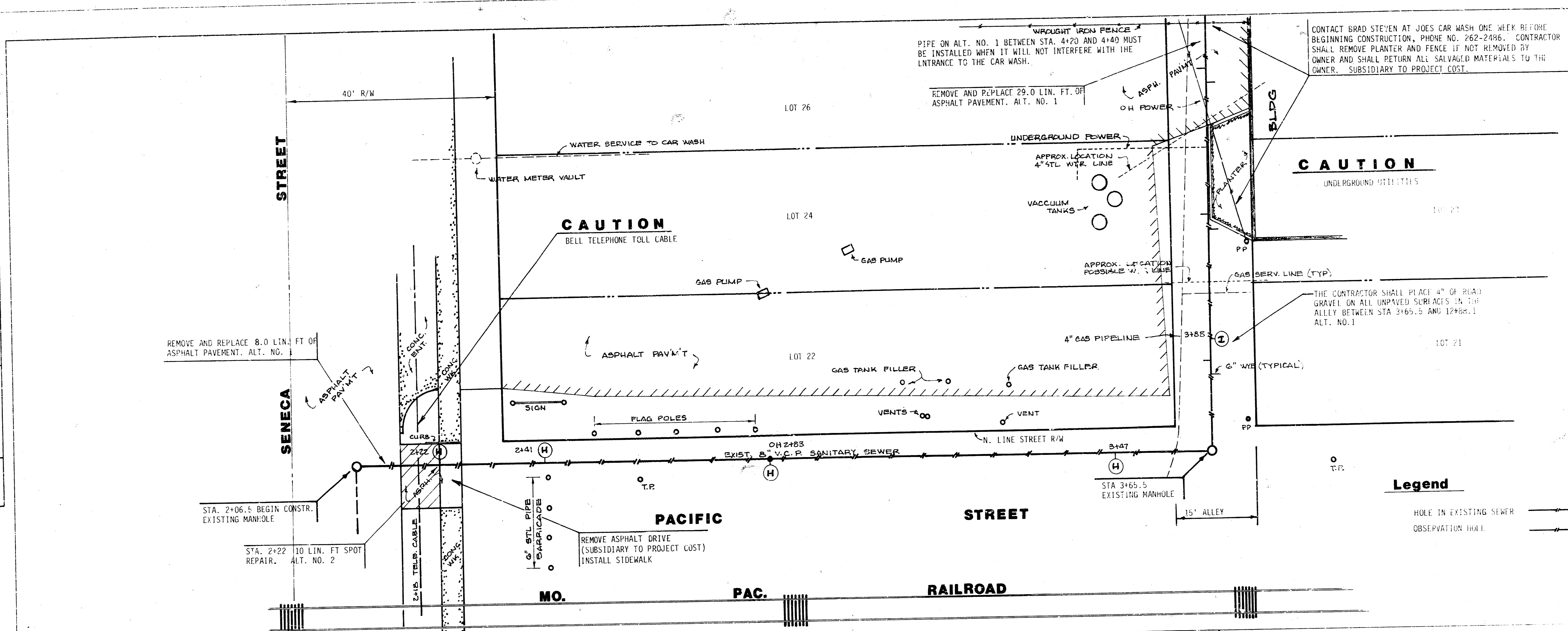
### INDEX TO DRAWINGS

TITLE . . . . . SHEET NO. 1  
 PLAN AND PROFILE . . . . . SHEET NO. 2-5

*As Built  
3-11-86  
ROL*

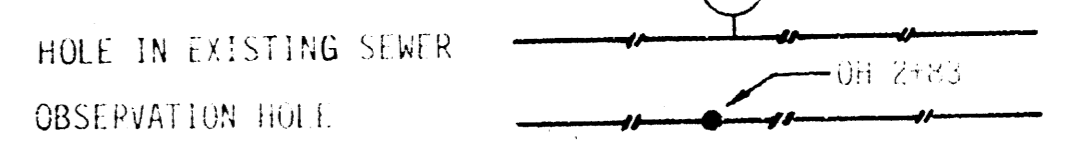


STATE	FISCAL YEAR	SHEET NO.	TOTAL SHEETS
		2	5

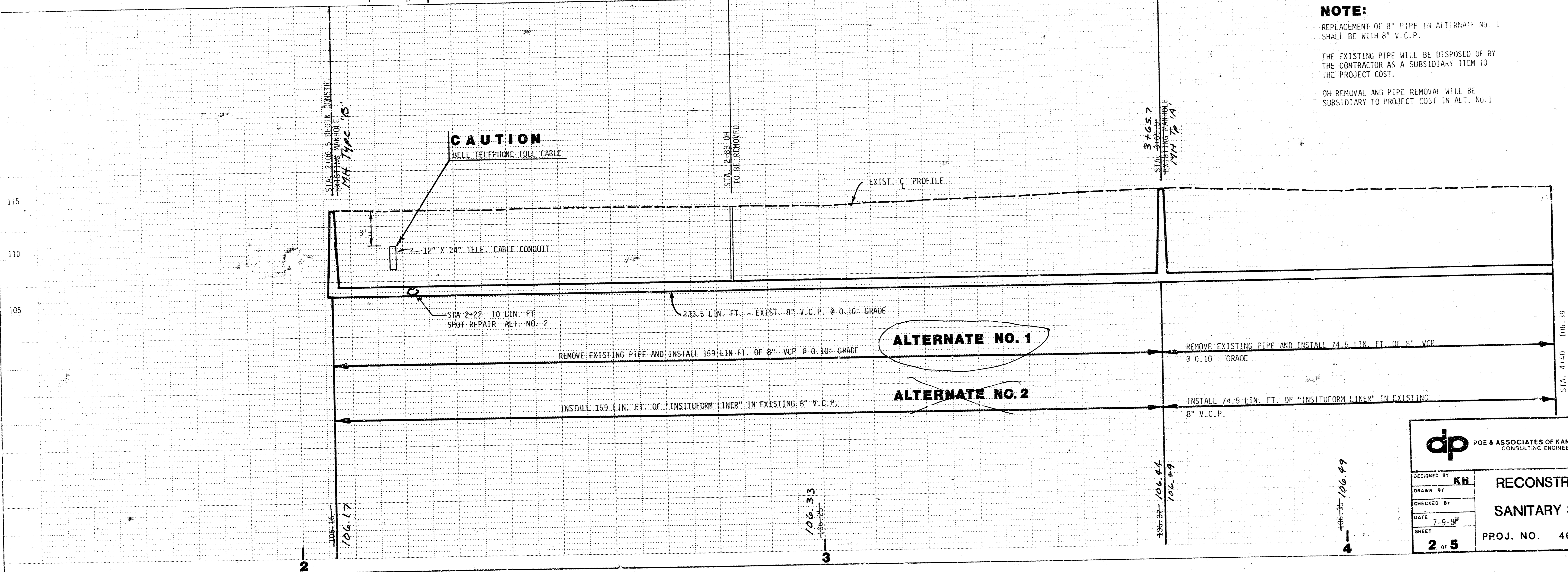


**CAUTION**  
UNDERGROUND UTILITIES

**Legend**



**NOTE:**  
REPLACEMENT OF 8\"/>



**ALTERNATE NO. 1**

**ALTERNATE NO. 2**

**PLAN**

DATE	BY
SURVEYED, PLOTTED, CHECKED, REVISIONS, ETC.	
NOTE BOOK NO.	

**PROFILE**

DATE	BY
SURVEYED, PLOTTED, CHECKED, REVISIONS, ETC.	
NOTE BOOK NO.	

**dp** POE & ASSOCIATES OF KANSAS, INC.  
CONSULTING ENGINEERS

DESIGNED BY: **KH**  
DRAWN BY:  
CHECKED BY:  
DATE: 7-9-87  
SHEET: **2 of 5**

**RECONSTRUCTING A PORTION OF  
SANITARY SEWER NO. 8**

PROJ. NO. 468-76-245-81471-000-000-001

North

CONTINUED ON SHEET NO. 3

STATE	FISCAL YEAR	SHEET NO.	TOTAL SHEETS

DATE	BY

PLAN

SURVEYED, PLOTTED, CHECKED, & NOTED BY: [Name]

NOTE BOOK NO. [Number]

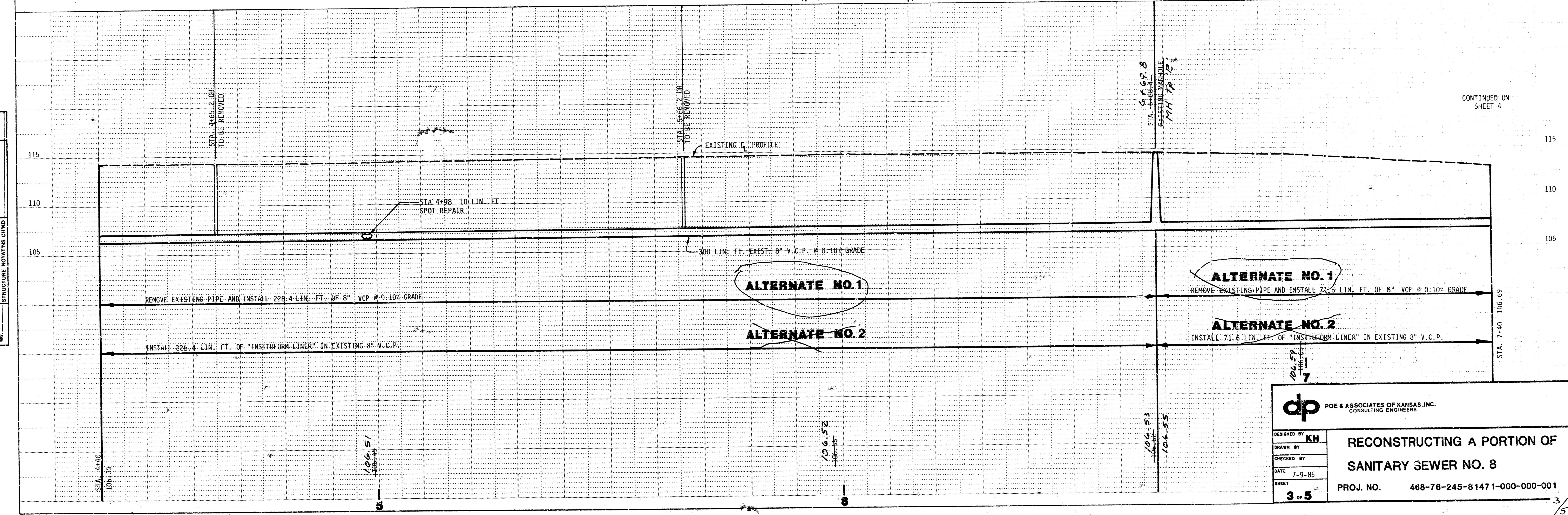
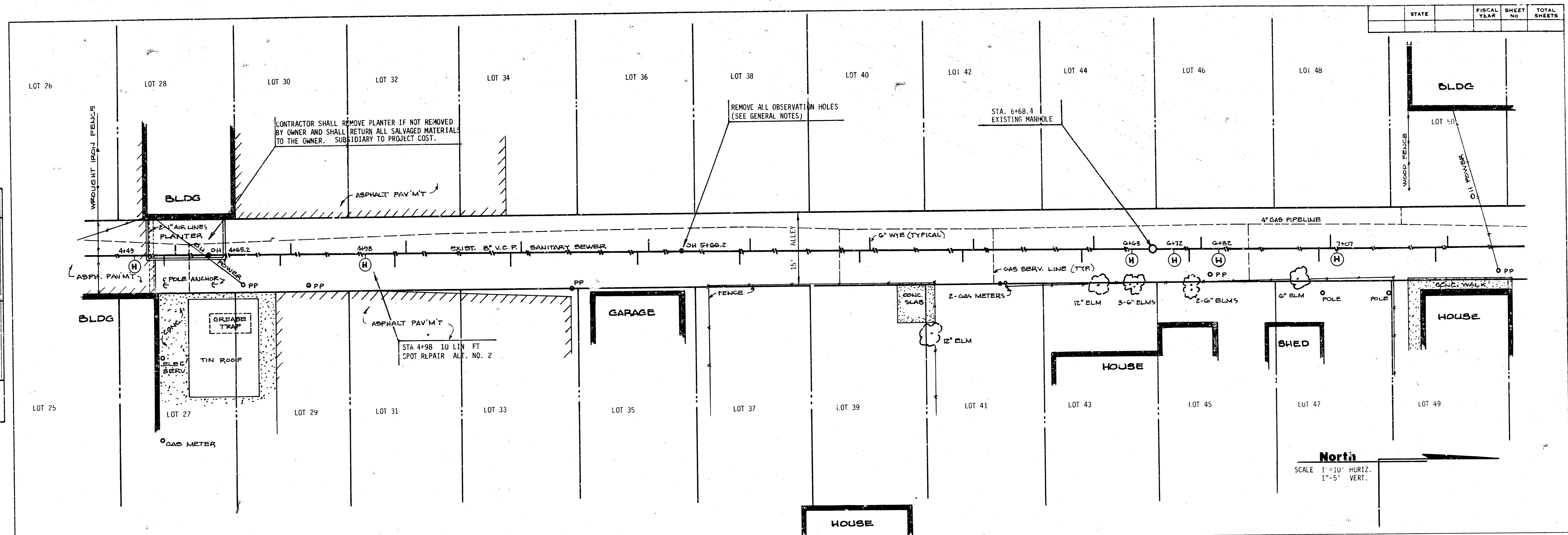
DATE	BY

PROFILE

SURVEYED, PLOTTED, CHECKED, & NOTED BY: [Name]

NOTE BOOK NO. [Number]

PROPOSED, EXISTING, & REMOVED



**dp** POE & ASSOCIATES OF KANSAS, INC.  
CONSULTING ENGINEERS

DESIGNED BY: KH  
DRAWN BY:  
CHECKED BY:  
DATE: 7-9-85  
SHEET: 3 of 5

**RECONSTRUCTING A PORTION OF  
SANITARY SEWER NO. 8**

PROJ. NO. 468-76-245-81471-000-000-001

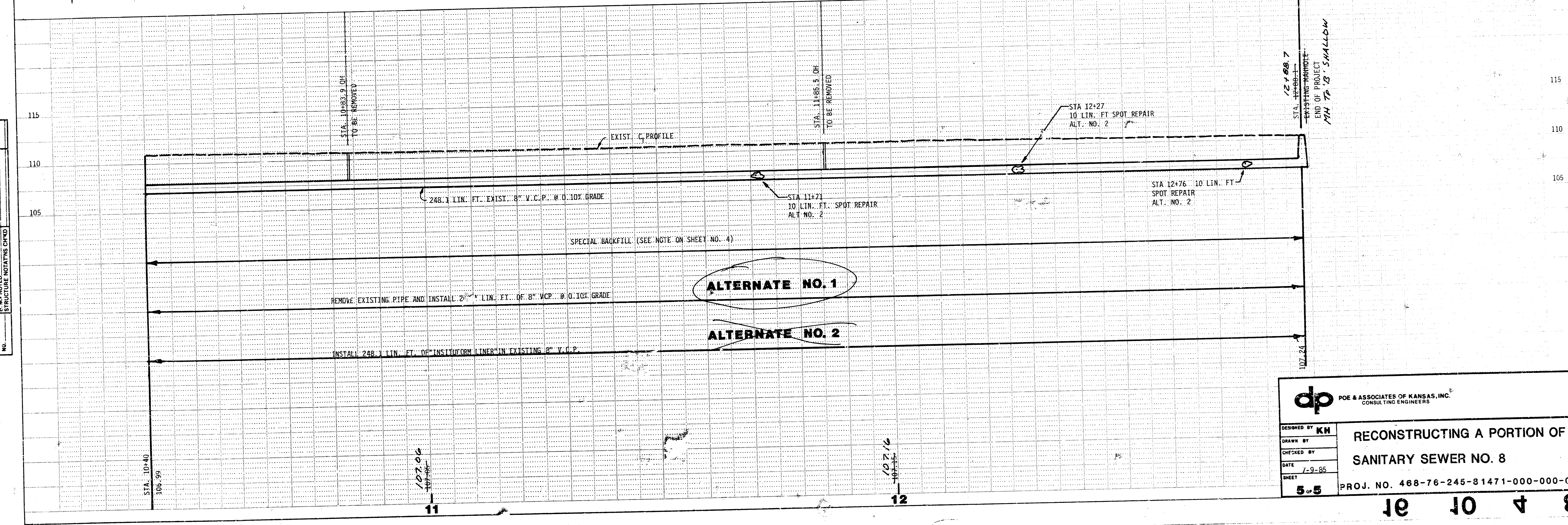
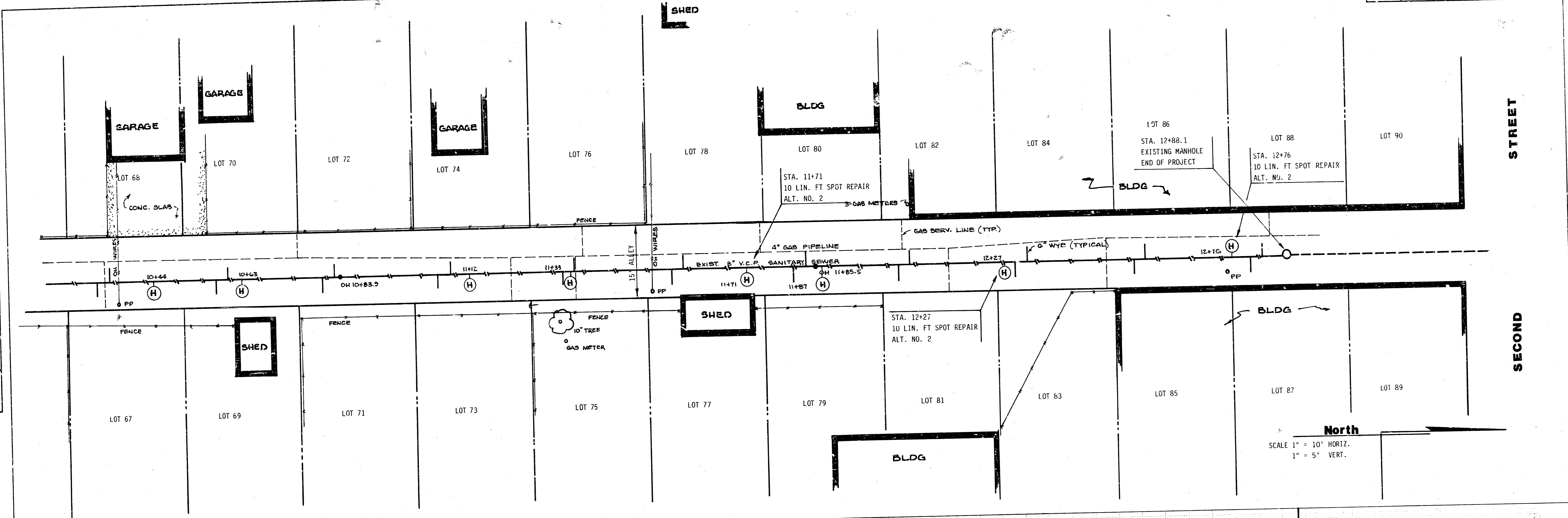
3/5



DATE	
BY	
SURVEYED	
ALIGNMENT CHECKED	
RT OF WAY CHECKED	
PLAN	
NOTE BOOK NO.	

DATE	
BY	
SURVEYED	
GRADES CHECKED	
RT OF WAY CHECKED	
PROFILE	
NOTE BOOK NO.	

STATE	
FISCAL YEAR	
SHEET NO.	
TOT. SHEETS	



**dp** POE & ASSOCIATES OF KANSAS, INC.  
CONSULTING ENGINEERS

DESIGNED BY **KM**  
DRAWN BY  
CHECKED BY  
DATE 7-9-85  
SHEET 5 OF 5

**RECONSTRUCTING A PORTION OF  
SANITARY SEWER NO. 8**

PROJ. NO. 468-76-245-81471-000-0001