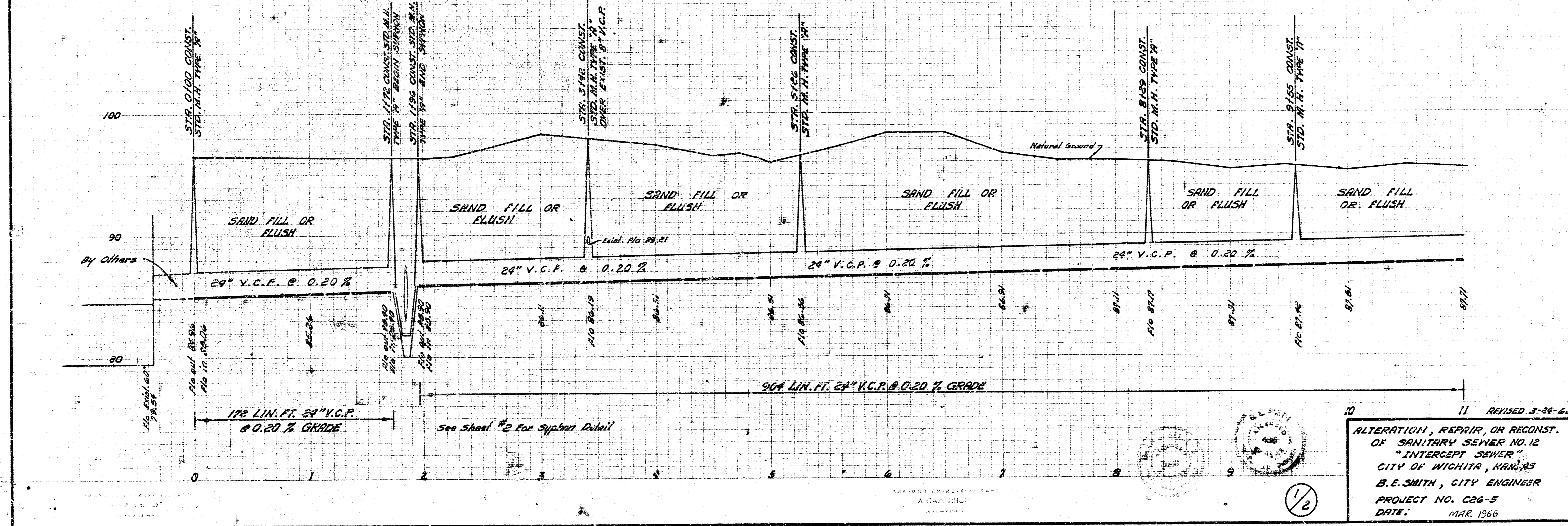


GENERAL NOTES

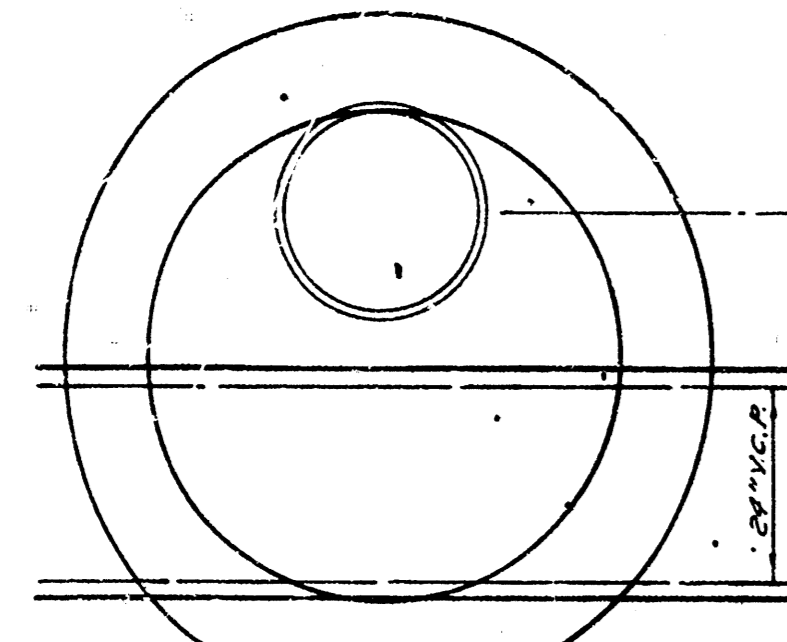
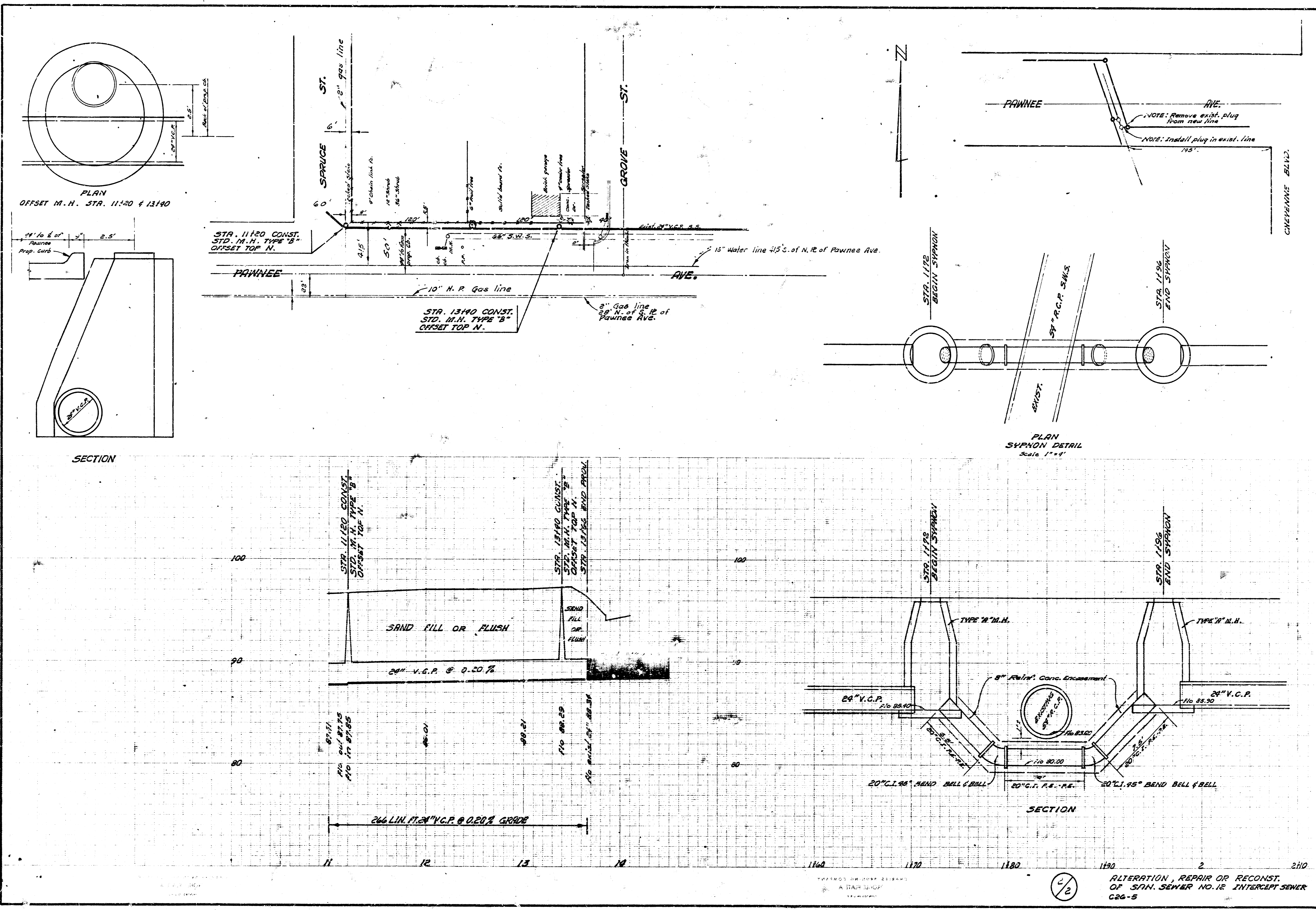
Bid of conc. slab rem.
 includes drives, sidewalk,
 floor slab, basement floors & walls.
 Bid of pavt. required to include
 saw cut along edge of removal where
 there is no axial joint.
 Saw cut blocks & spruce not to be
 replaced.
 Contractor shall coordinate work with
 other Contractors working on I-35W proj.

Plan Scale 1" = 40'
 Profile Scale 1" = 4' Vert.
 1" = 4' Vert.

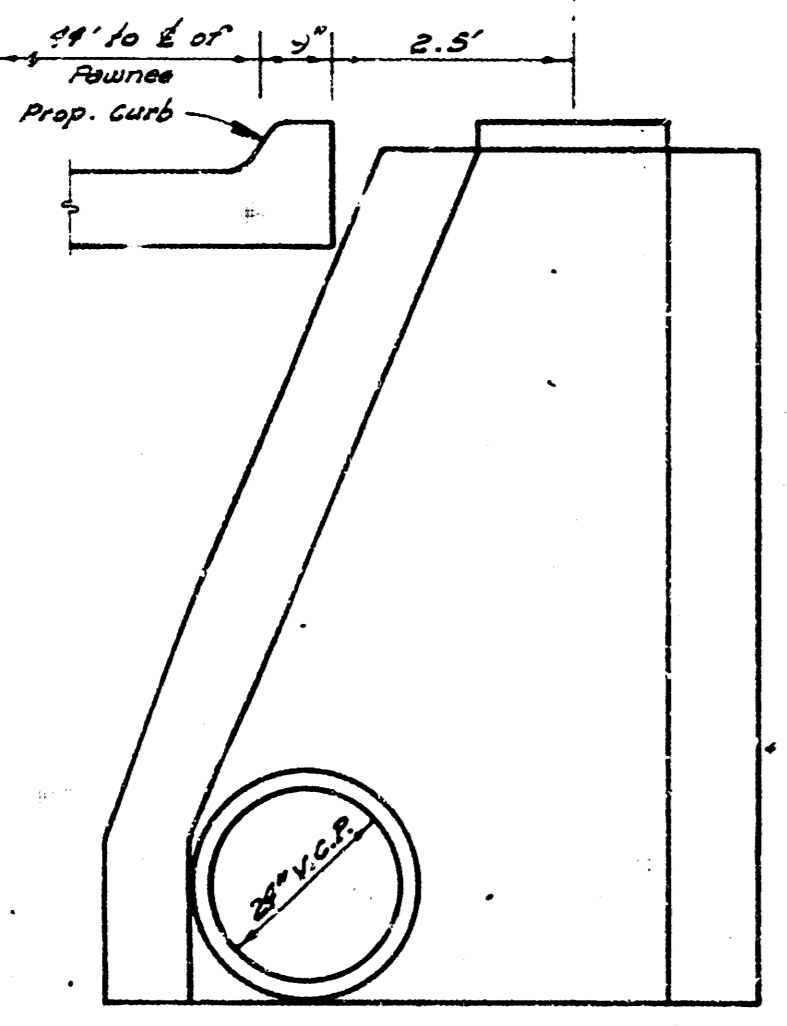
24" x 20" x 15" M. of S.E. cor. conc. M.H. E. bank canal bet. Rule St. & Stafford
 B.M. 8113 R.R. Spike in P.P., N.E. cor. 10th & Pawnee



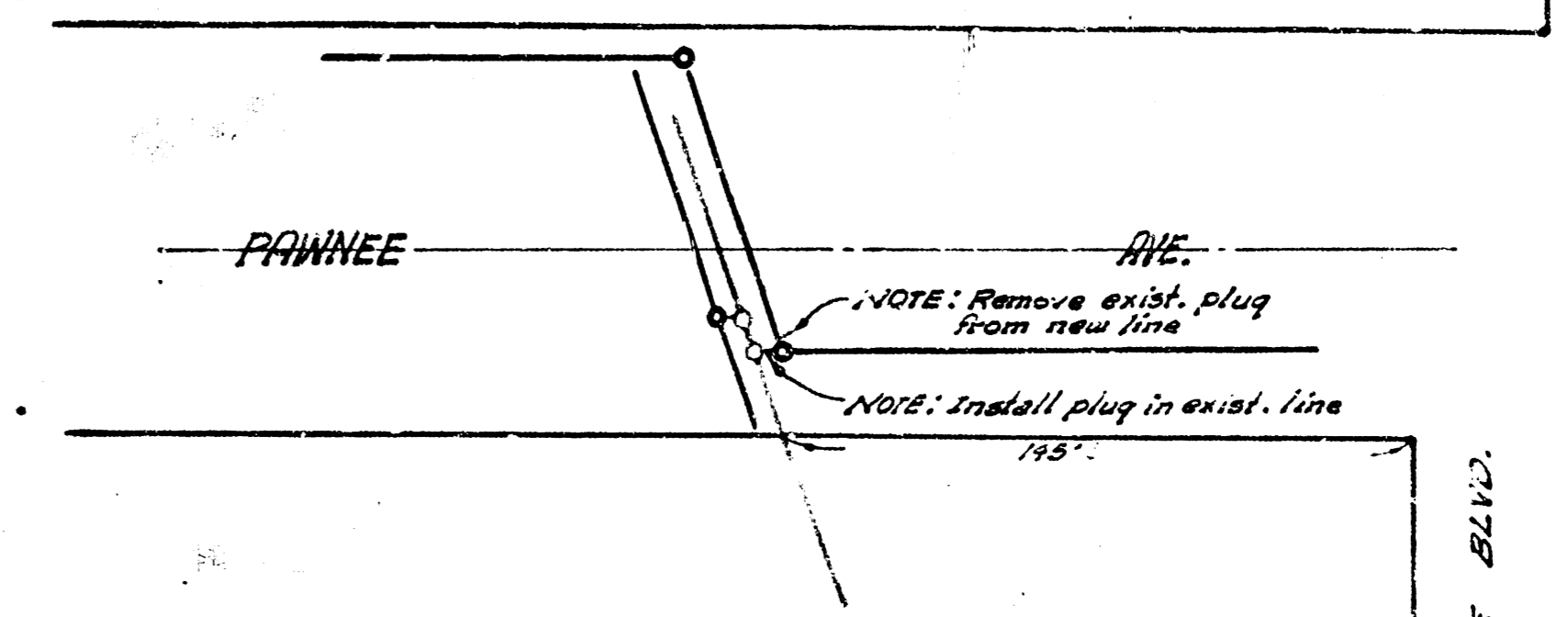
10
 11 REVISED 3-26-66
 ALTERATION, REPAIR, OR RECONST.
 OF SANITARY SEWER NO. 12
 "INTERCEPT SEWER"
 CITY OF WICHITA, KAN., 25
 B.E. SMITH, CITY ENGINEER
 PROJECT NO. C26-5
 DATE: MAR 1966



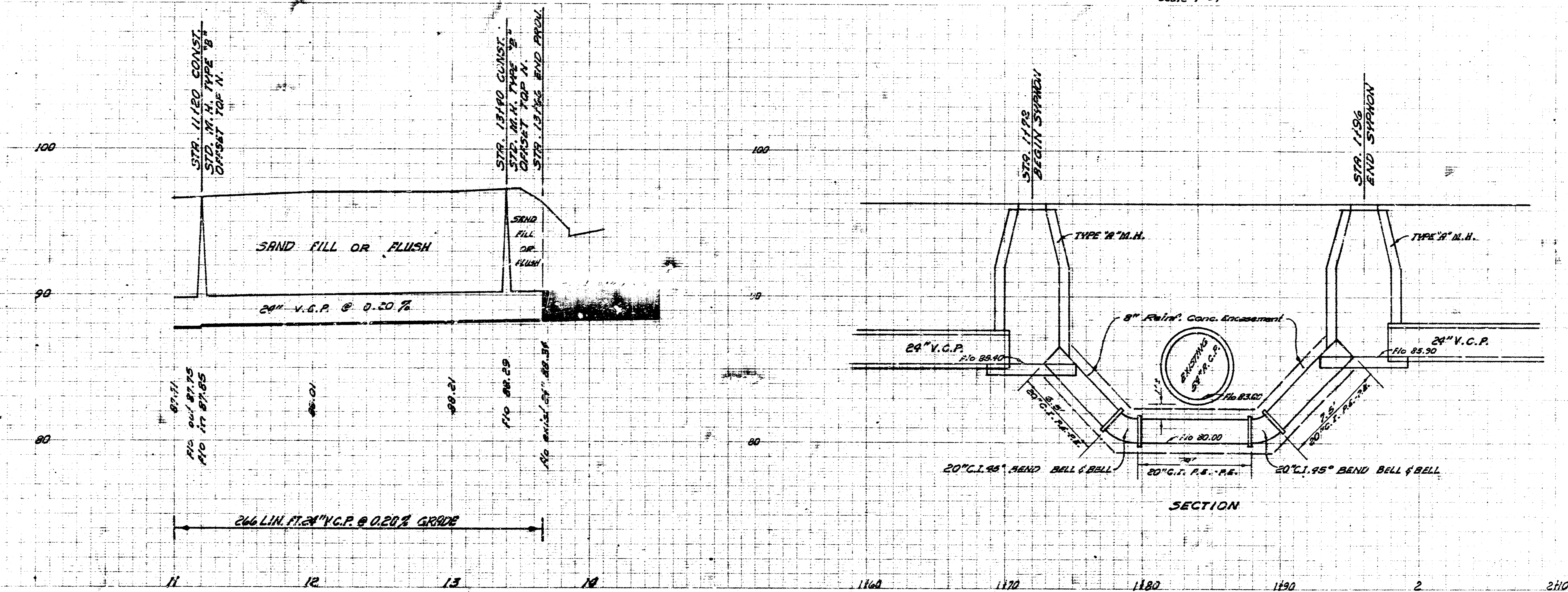
PLAN
OFFSET M.H. STA. 1120 & 1196



SECTION



PLAN
SYPHON DETAIL
Scale 1"=4'



SECTION

2/2

ALTERATION, REPAIR OR RECONST.
OF SAN. SEWER NO. 12 INTERCEPT SEWER
C26-5