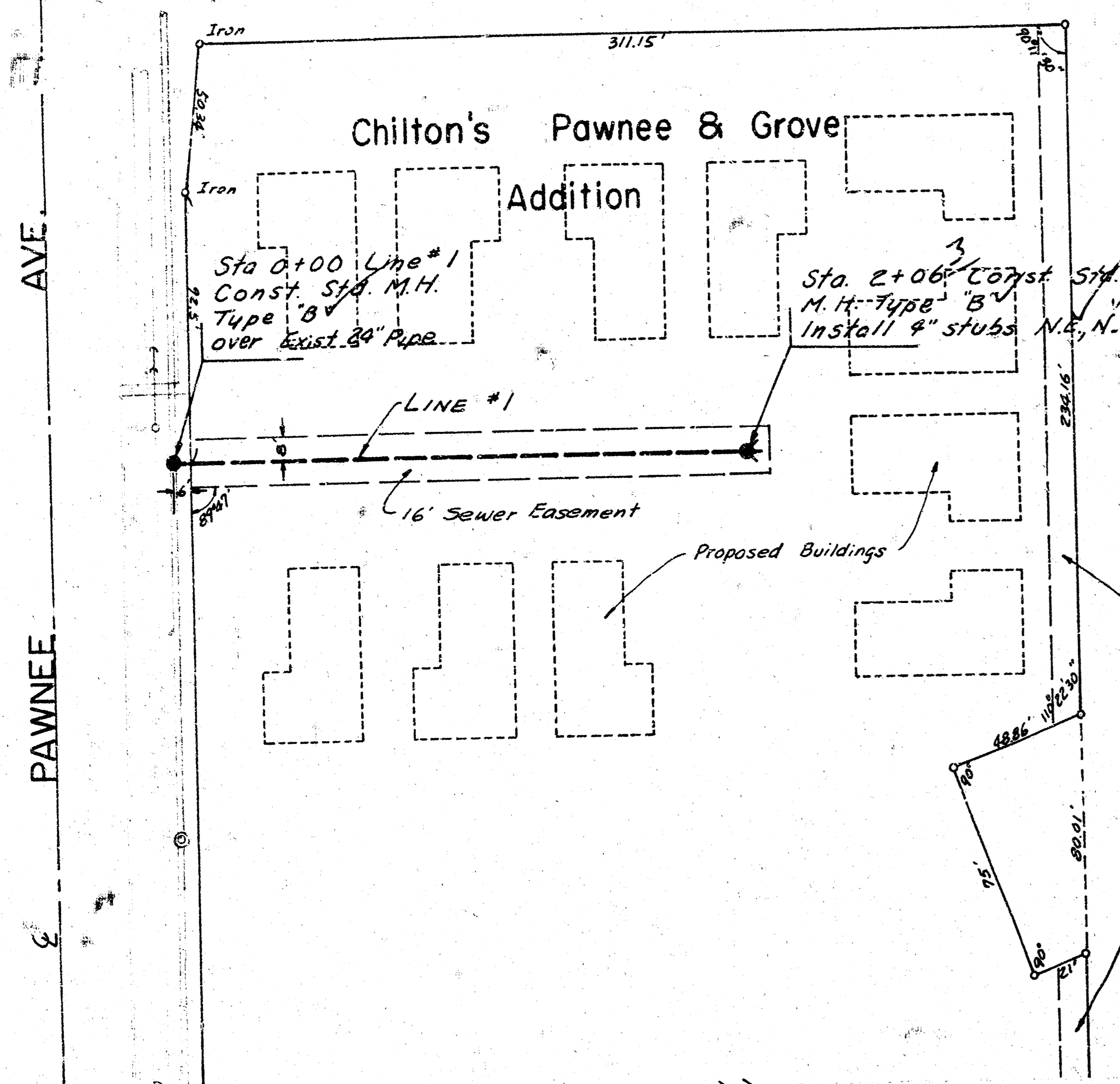


SW Cor. SE 1/4,
Sec. 34-27-1E

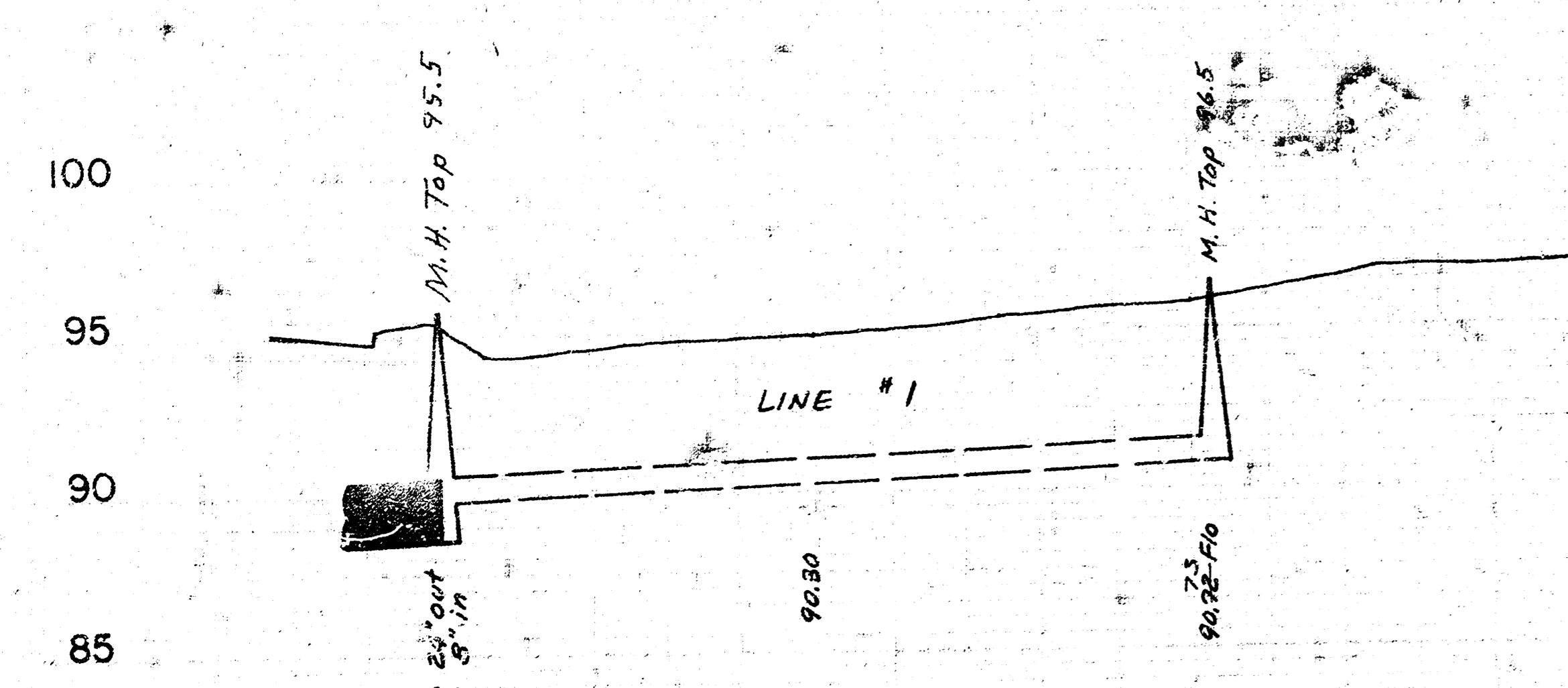
Chilton's Pawnee & Grove Addition

Scale Plan 1" = 40'
Profile 1" = 40' Horiz.
1" = 5' Vert.



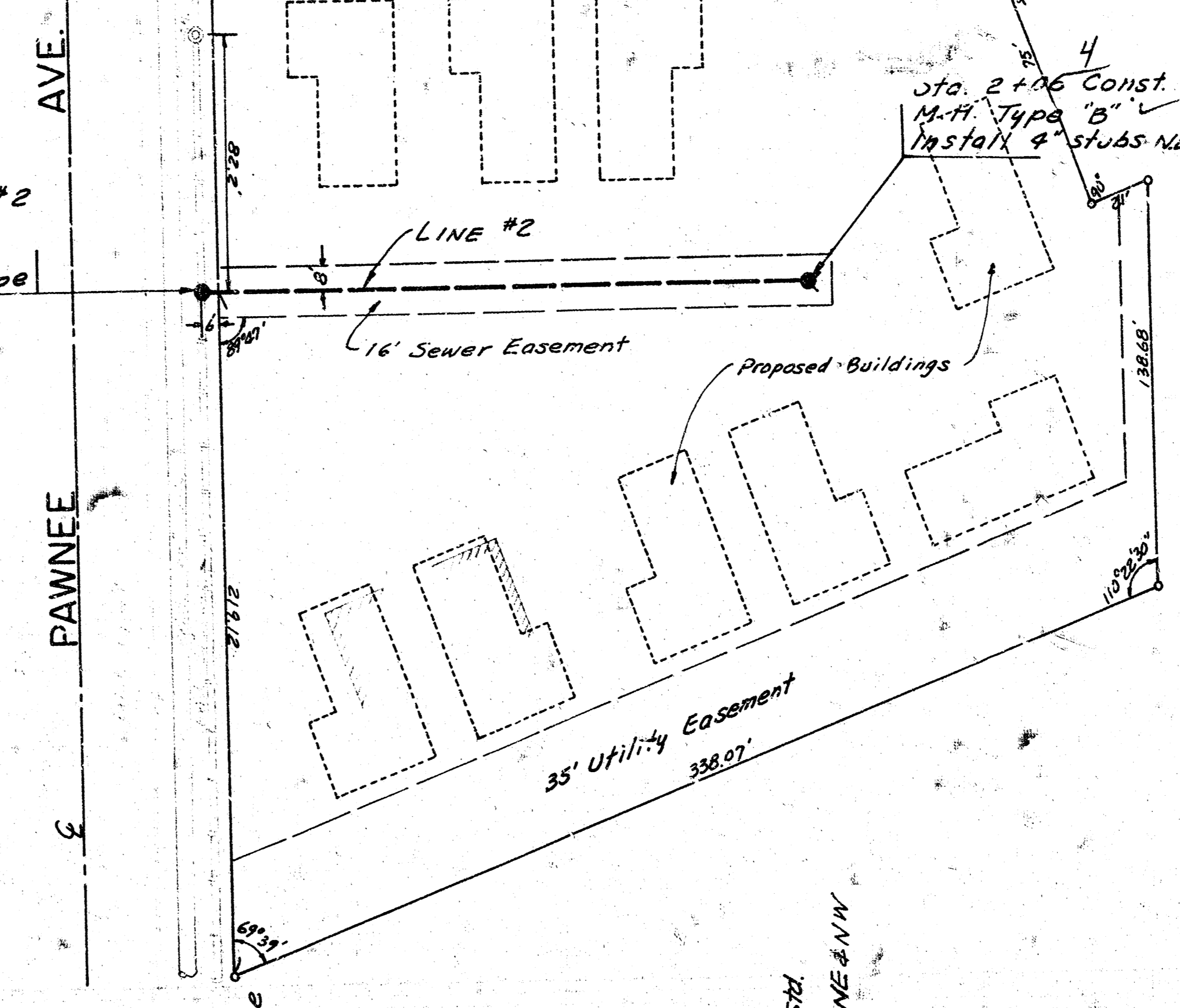
Sta. 0+00 Line #1
Const. Std. M.H.
Type 'B'
over Exist. 24" Pipe

Sta. 2+06 Const. Std.
M.H. Type 'B' Install
4" stubs NE, N., NW, & W.N.W.



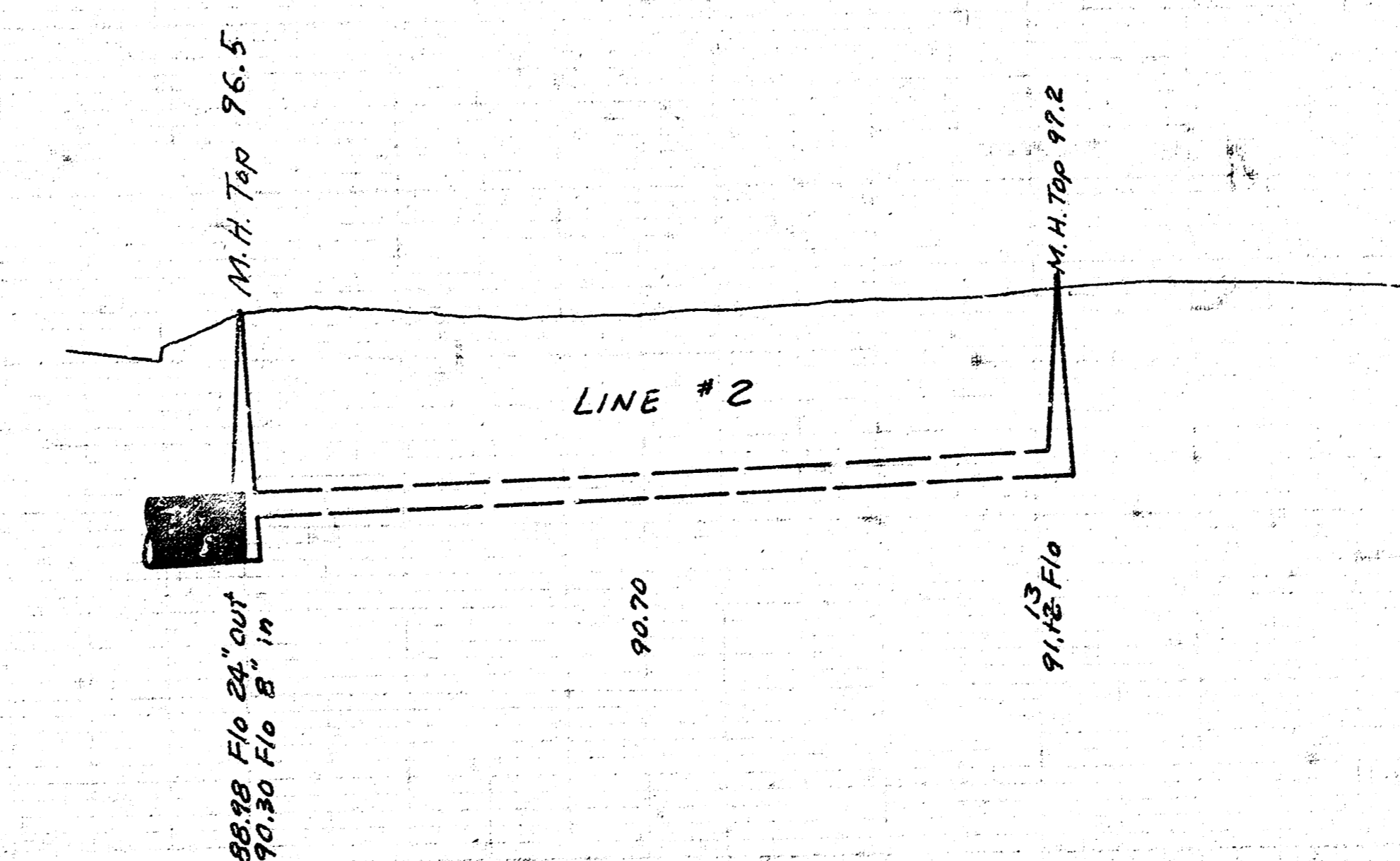
206 LF of 8" P.V.C. Pipe @ 0.40% Grade
Alternate 8" A.B.S. Composite Pipe
or 8" Clay Pipe

Chilton's Pawnee & Grove Addition



Sta. 0+00 Line #2
Const. Std. M.H.
Type 'A'
over Exist. 24" Pipe

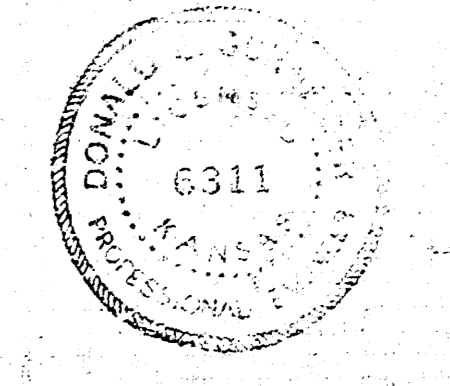
Sta. 2+06 Const. Std.
M.H. Type 'B' Install
4" stubs NE, N., NW, & W.N.W.



206 LF of 8" P.V.C. Pipe @ 0.40% Grade
Alternate 8" A.B.S. Composite Pipe
or 8" Clay Pipe

- B.M. 103.48 City Std. B.M. Disc. Hillside & Pawnee 29' N & 40.7' E of E both.
- B.M. 94.69 '0" Top of W. Curb Grove 80' N of E Pawnee.
- B.M. 98.13 SW Cor. Conc. Porch House #2602 East Pawnee.

As Built
7/27/81
Jff



LATERAL 14, SANITARY SEWER NO. 12
CITY OF WICHITA
R.W. BRUGGEMAN
DIRECTOR OF ENGINEERING - CITY ENGINEER
PROJ. NO. 468-76-245-81054-000-000-001