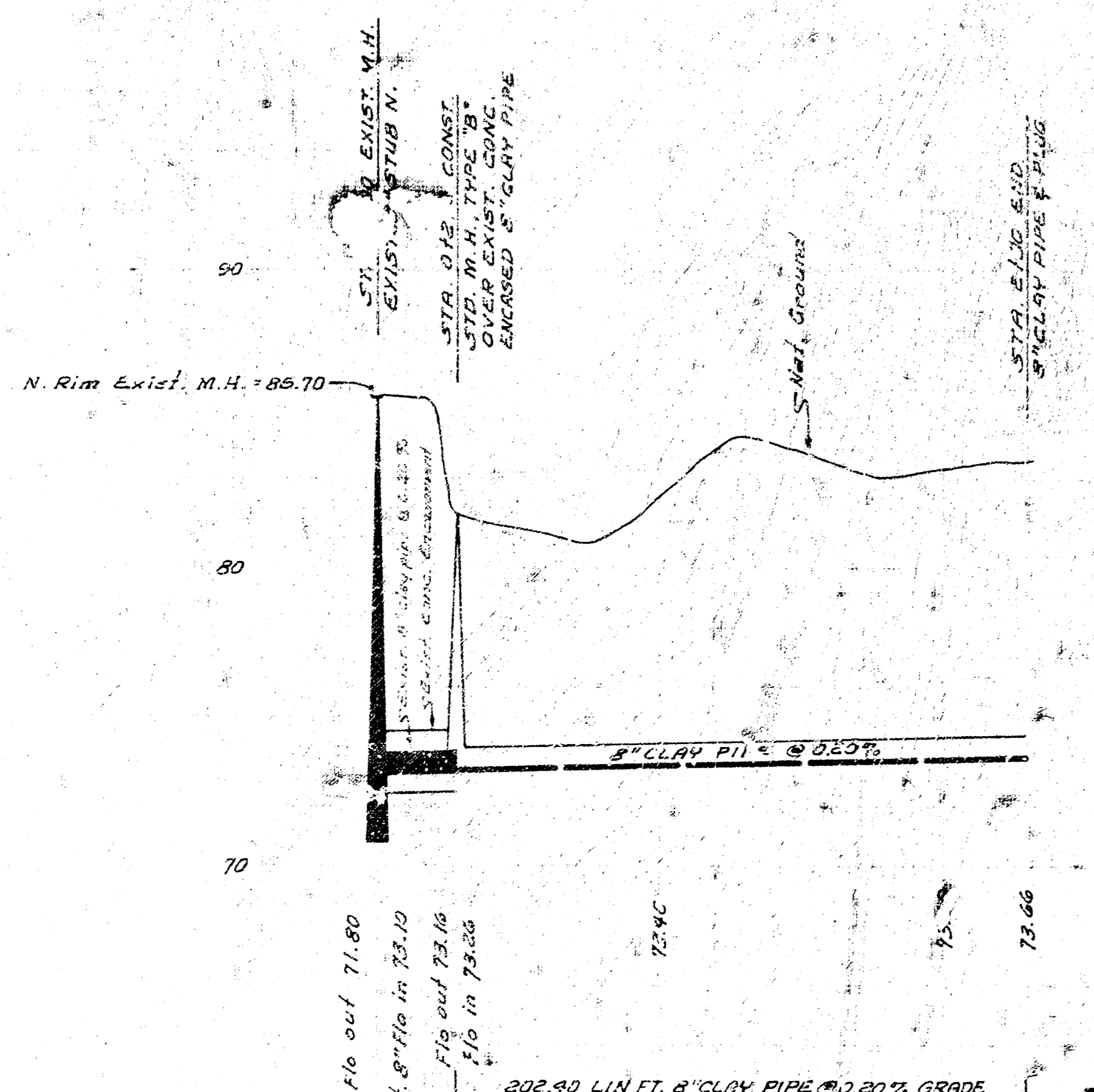
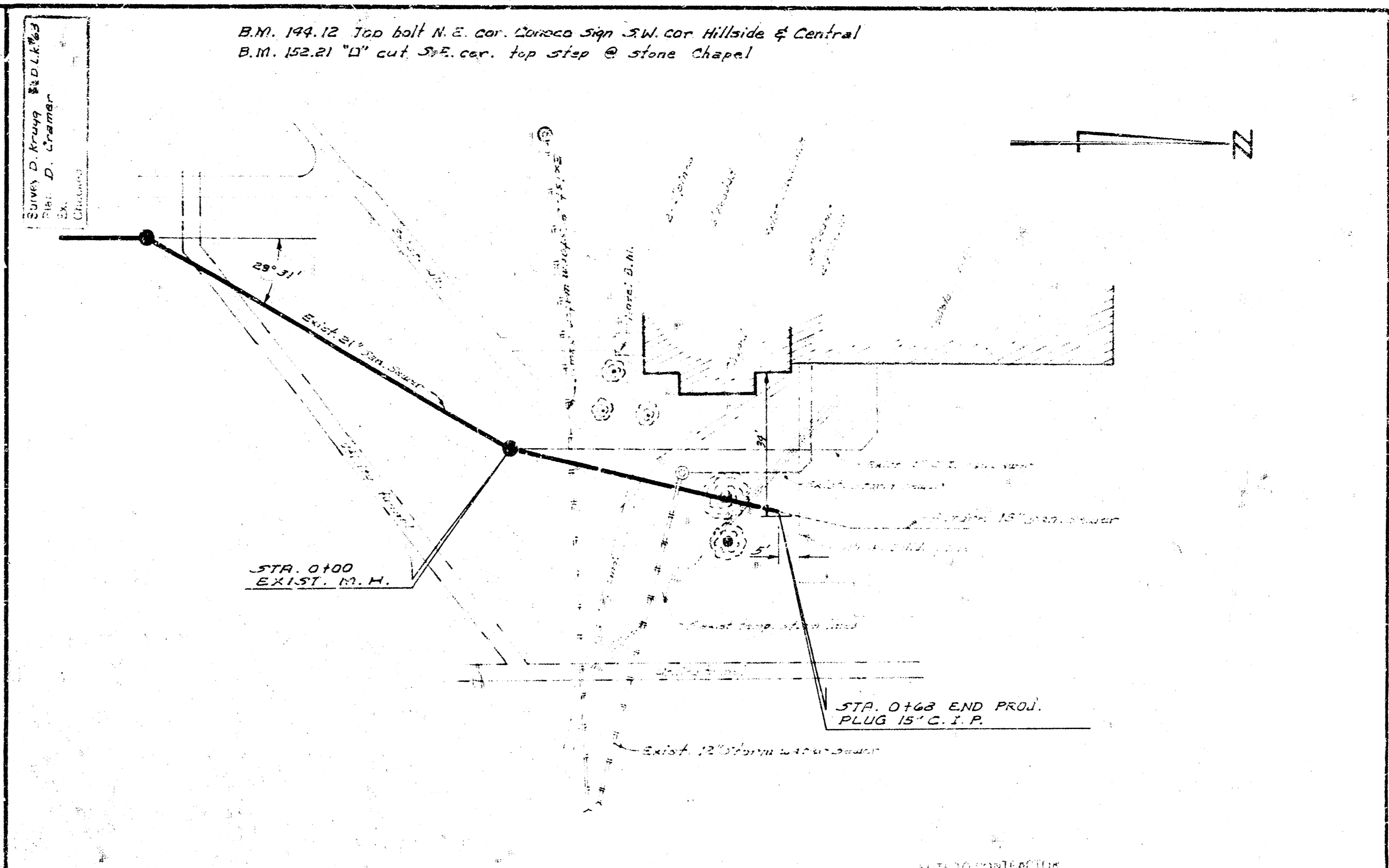


B.M. 84.39 "1" on N.W. cor. conc. M.H. S.E. cor. 47th St. & Hydraulic
 B.M. 85.70 N. Rim M.H. STA. 0100

Plan Scale 1"=40'
 Profile Scale 1"=40' Hor.
 1"=4' Vert.

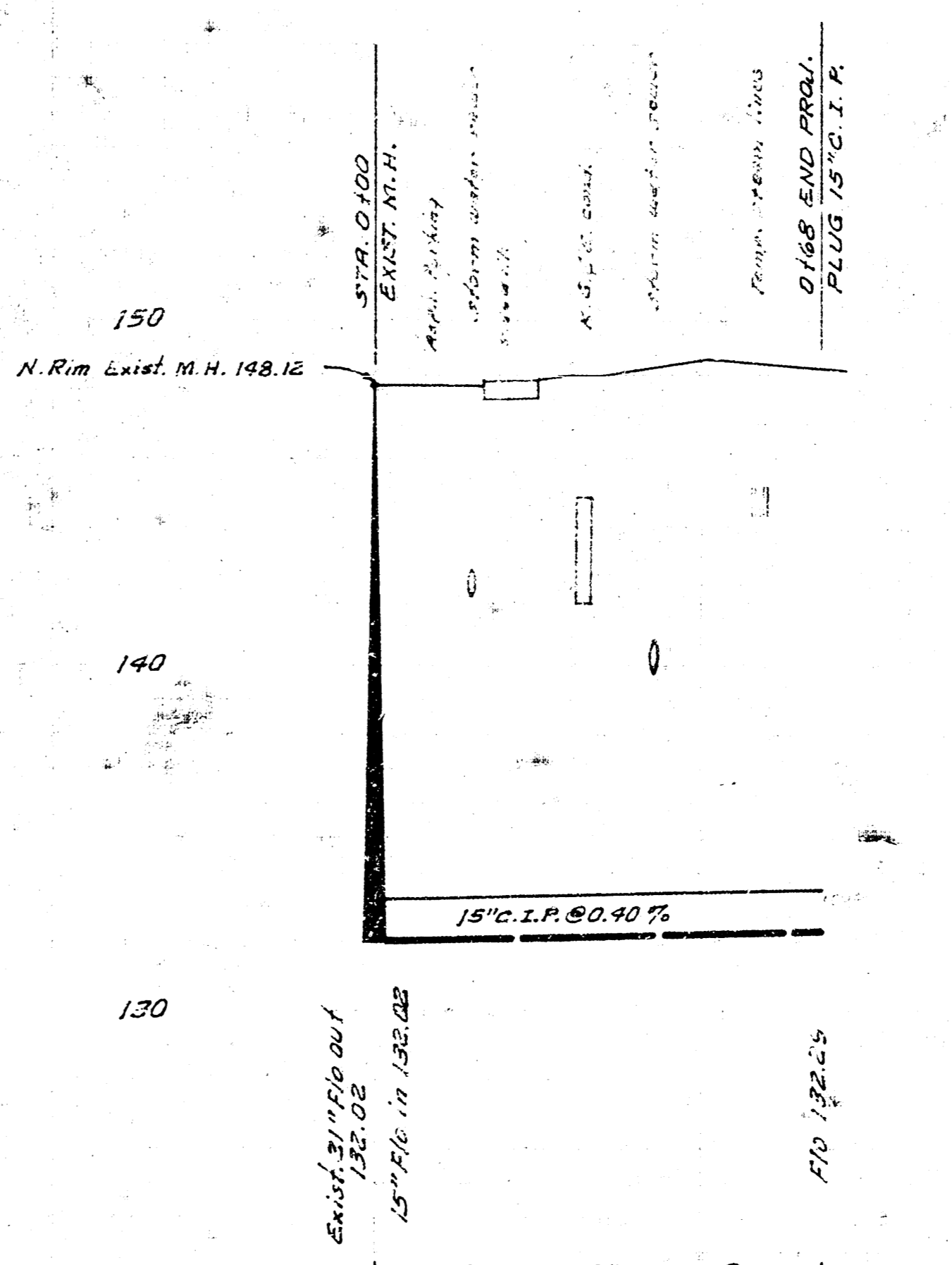


LAT. 22, SUB. 1, S.W. INTERCEPTOR
 CITY OF WICHITA, KANSAS
 B. E. SMITH, CITY ENGINEER
 PROJ. NO. C20-97
 DATE: NOV. 1970



B.M. 144.12 Top ball N.E. cor. Conoco sign S.W. cor. Hillside & Central
 B.M. 142.21 "D" cut S.W. cor. top step @ stone Chapel

Plan Scale 1"=20'
 Profile Scale 1"=20' Hor.
 1"=4' Vert.



2nd EXT. TO LAT. 1, WESLEY INTERCEPTOR
 CITY OF WICHITA, KANSAS
 B. E. SMITH, CITY ENGINEER
 DATE: 11, 19, 1970