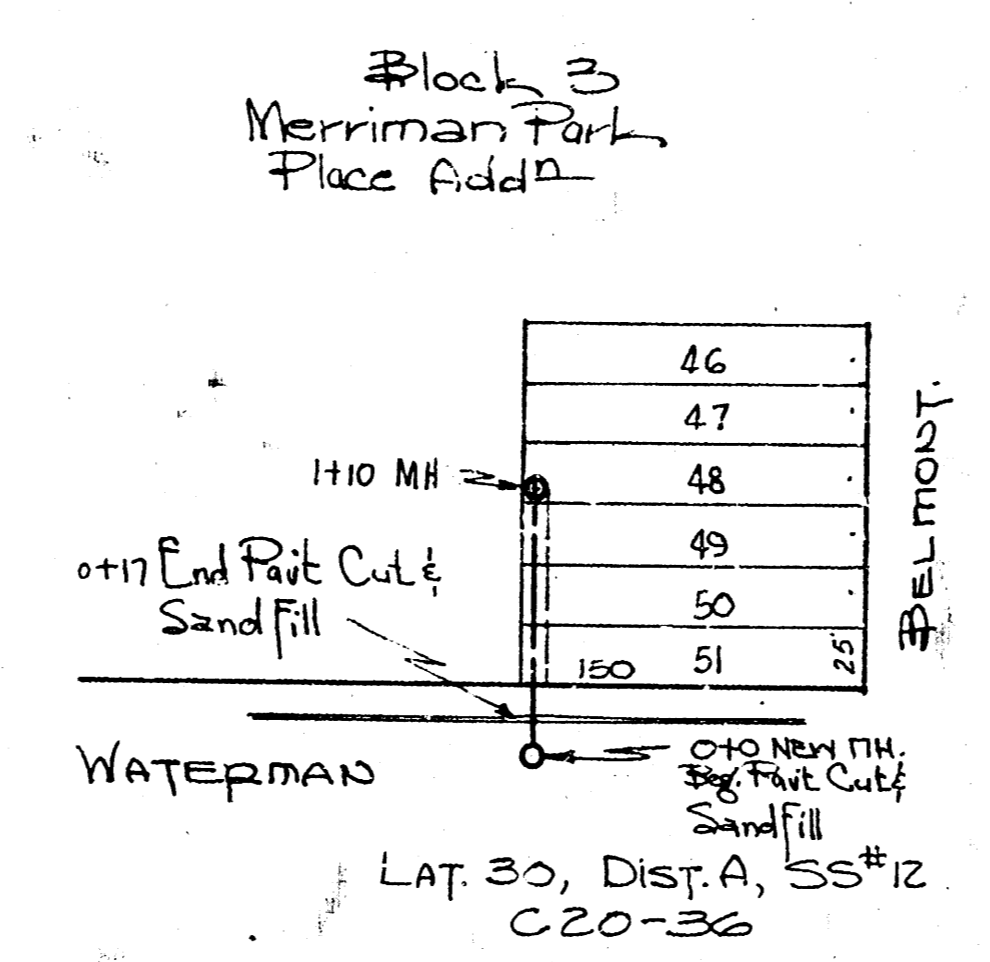


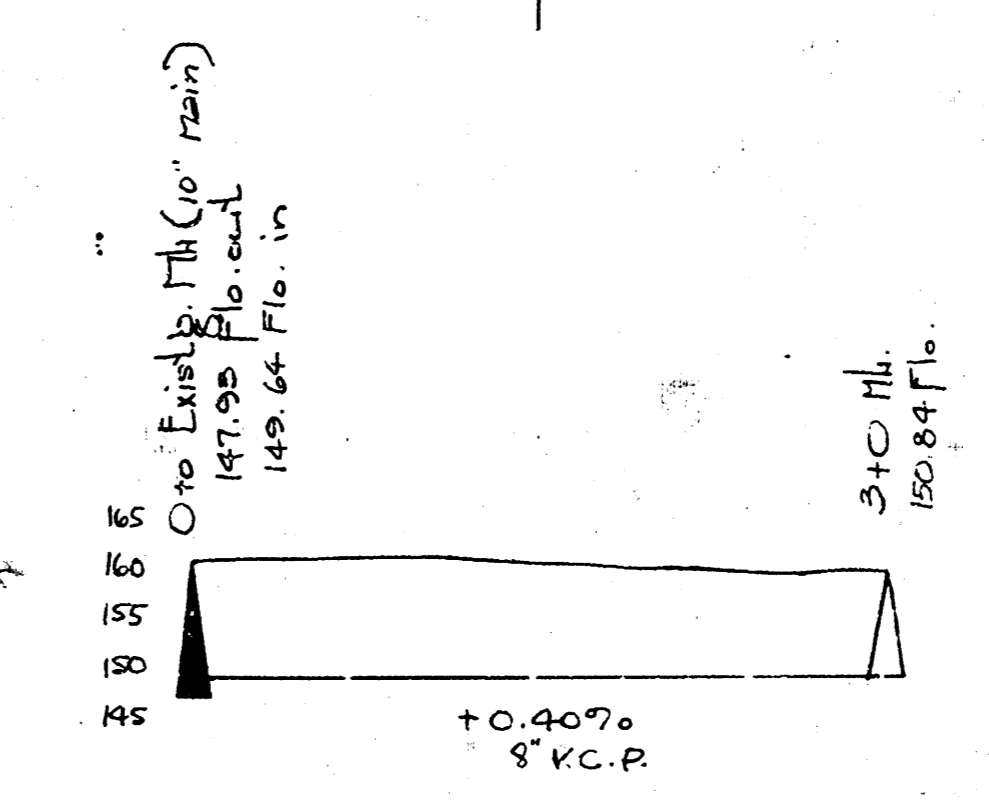
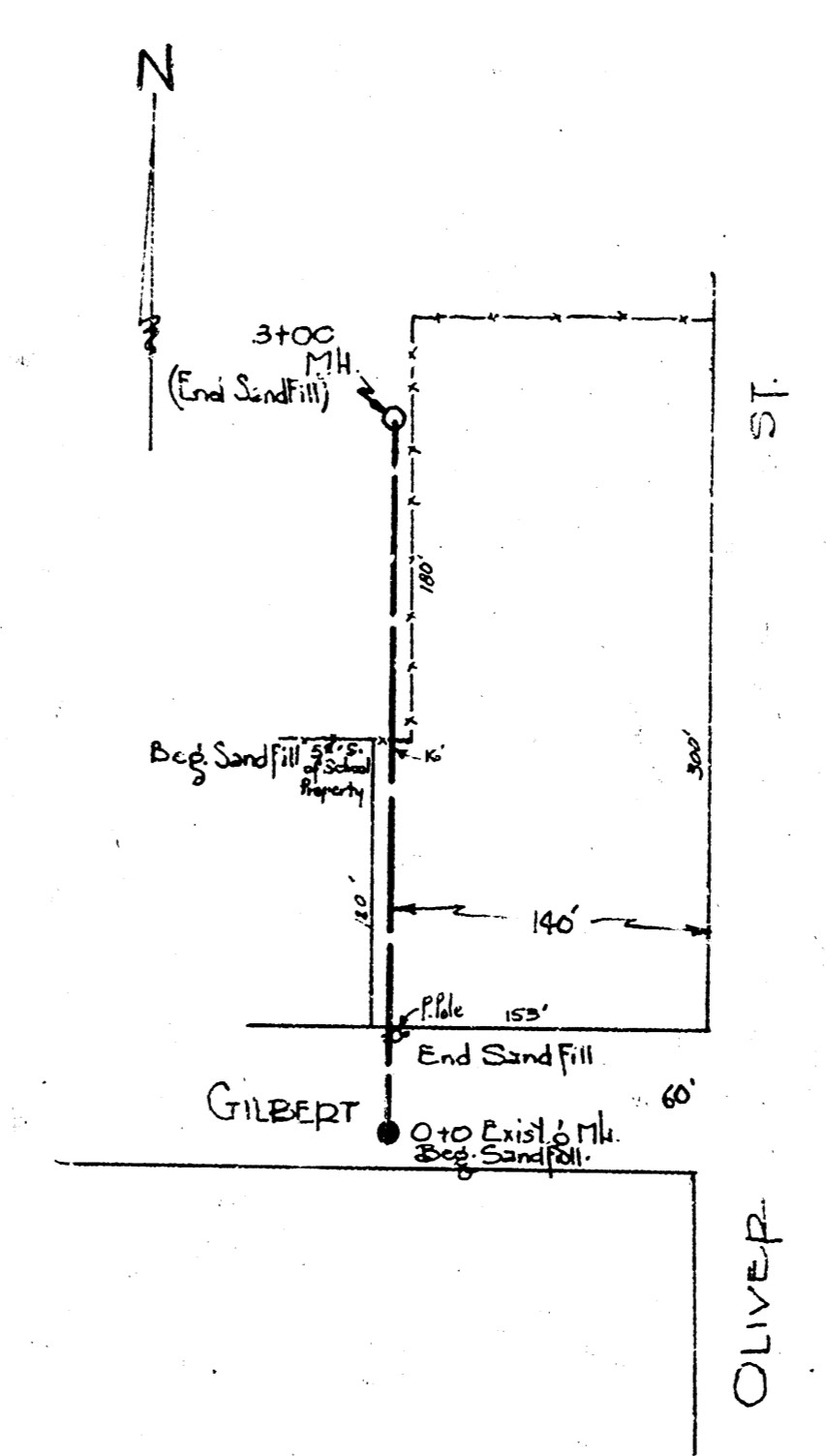
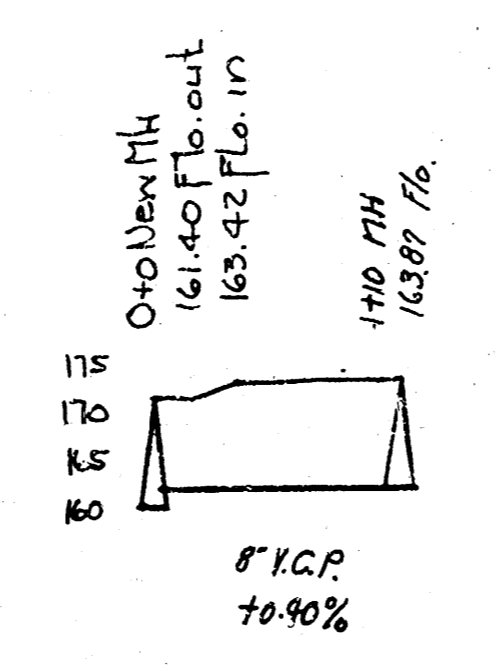
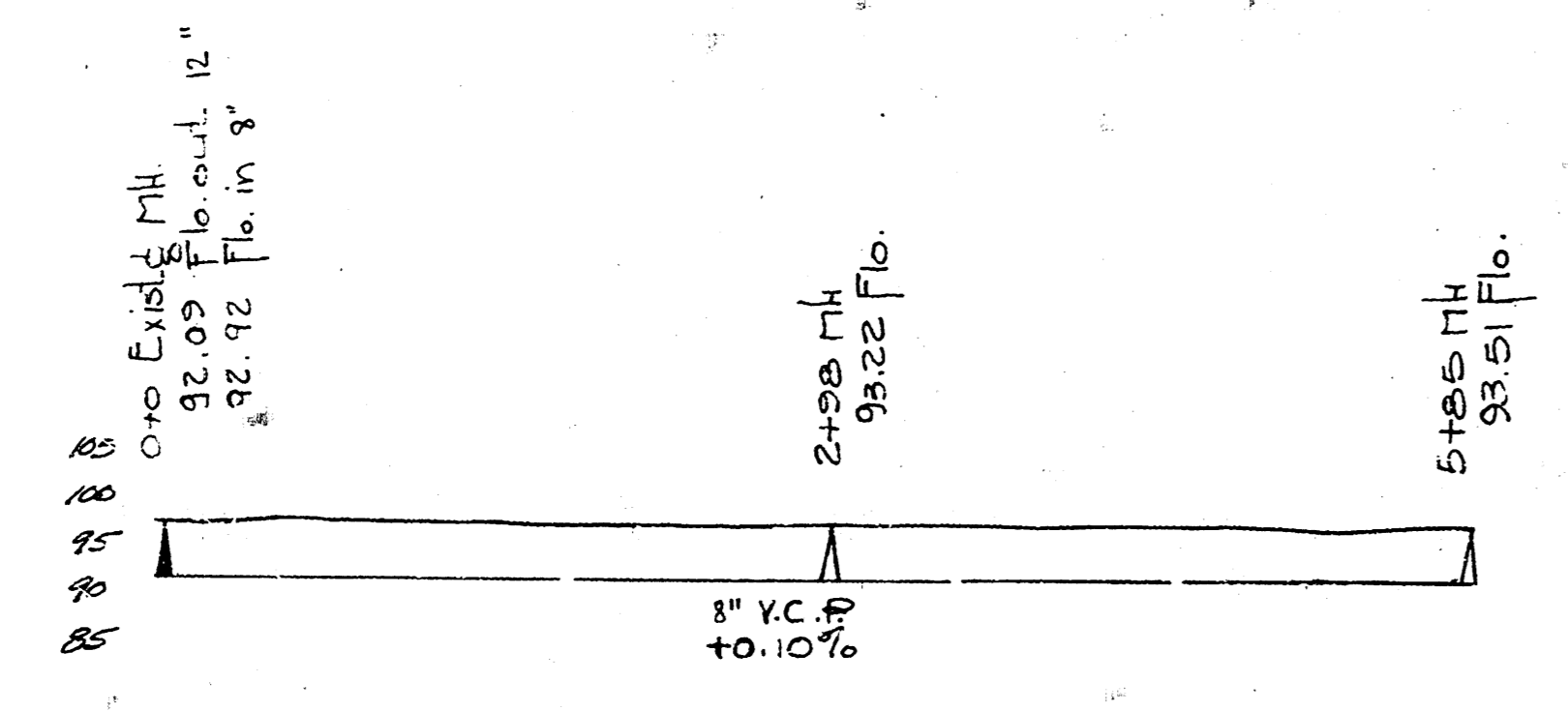
0+0 Existing M.H. on 12" Main LEVY
 LAT. 1, SUBMAIN Z, SS#12
 C20-42

B.M. 98.59 Prop. from N.L. Levy & E.L. Grove
 B.M. 100.76 1/4" in Gilbert S. end E. cb. Estelle & Funston.



0+10 Existing M.H. on 12" Main LEVY
 LAT. 30, DIST. A, SS#12
 C20-36

B.M. 115.43 1/4" Troy I.P. NW Corner Waterman & Belmont.



B.M. 161.83 E.Pim M.H. 0+0
 LAT. 49, DCS SS#12

LAT. 49, D.C.S. SS#12
 LAT. 30, DISTRICT A, SANITARY SEWER #12
 LAT. 1, SUBMAIN Z, SANITARY SEWER #12
 CITY OF WICHITA, KANSAS
 L.K. White City Engineer
 DATE 5-24-50 Proj. No. C20