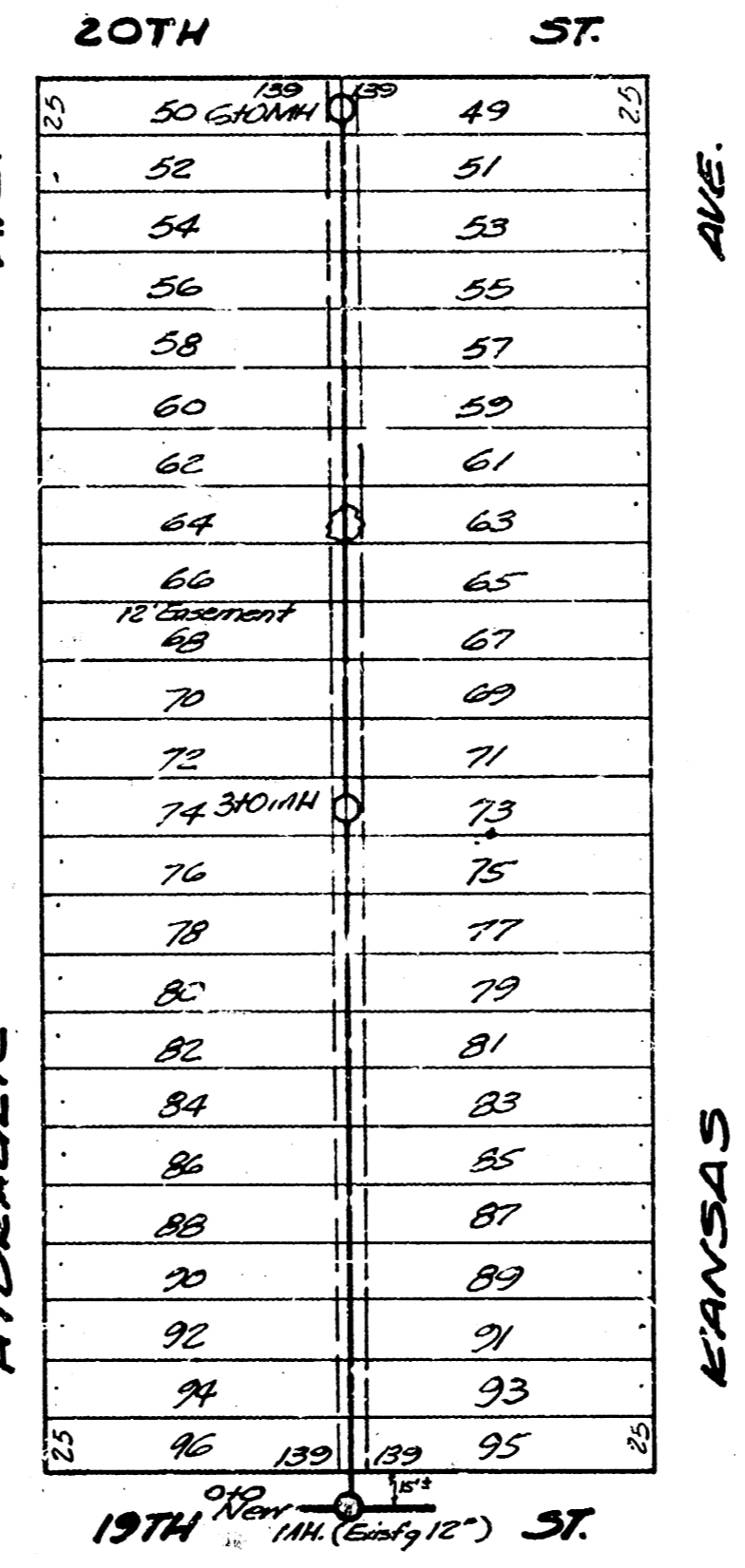


LAT. 9, DIST. AS, SS#12

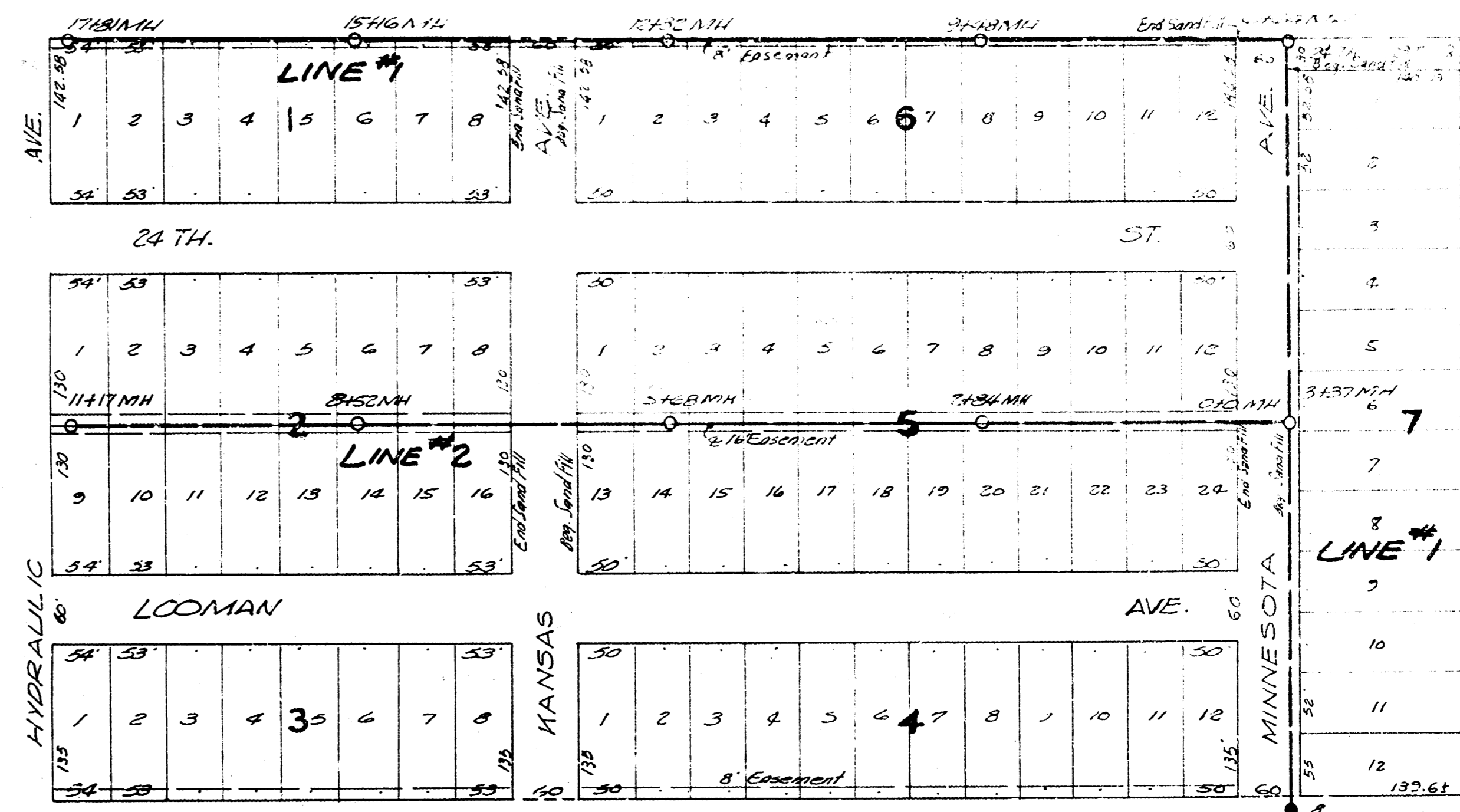
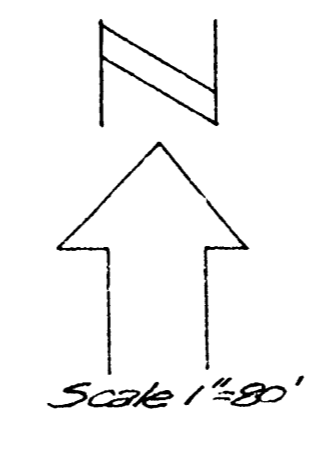
BM. 99.33 "G" IN GLOBE S. END WEST CURB Spruce & Funston

- 443 Cross Fence
- 442 6" Tree E
- 440 6" Tree E
- 394 6" Cedar SE E
- 394 1/2" Elm NW E
- 359 Cross Fence
- 342 6" Cedar
- 346 Cross Fence 18' tree
- 0488 East Garage
- 0475 Bay Garage 4' x 6'
- 0455 Cross Fence
- 0400 Cross Fence



LAT. 19, DIST. T, SS#12

BM. 120.23 No. Rim of Sa Spindle 19th & Hydraulic



LAT. 18, DIST. T, SS#12

BM. 121.46 "G" in Globe End of cb. East Side Minnesota N.E. Milliar Odd.

