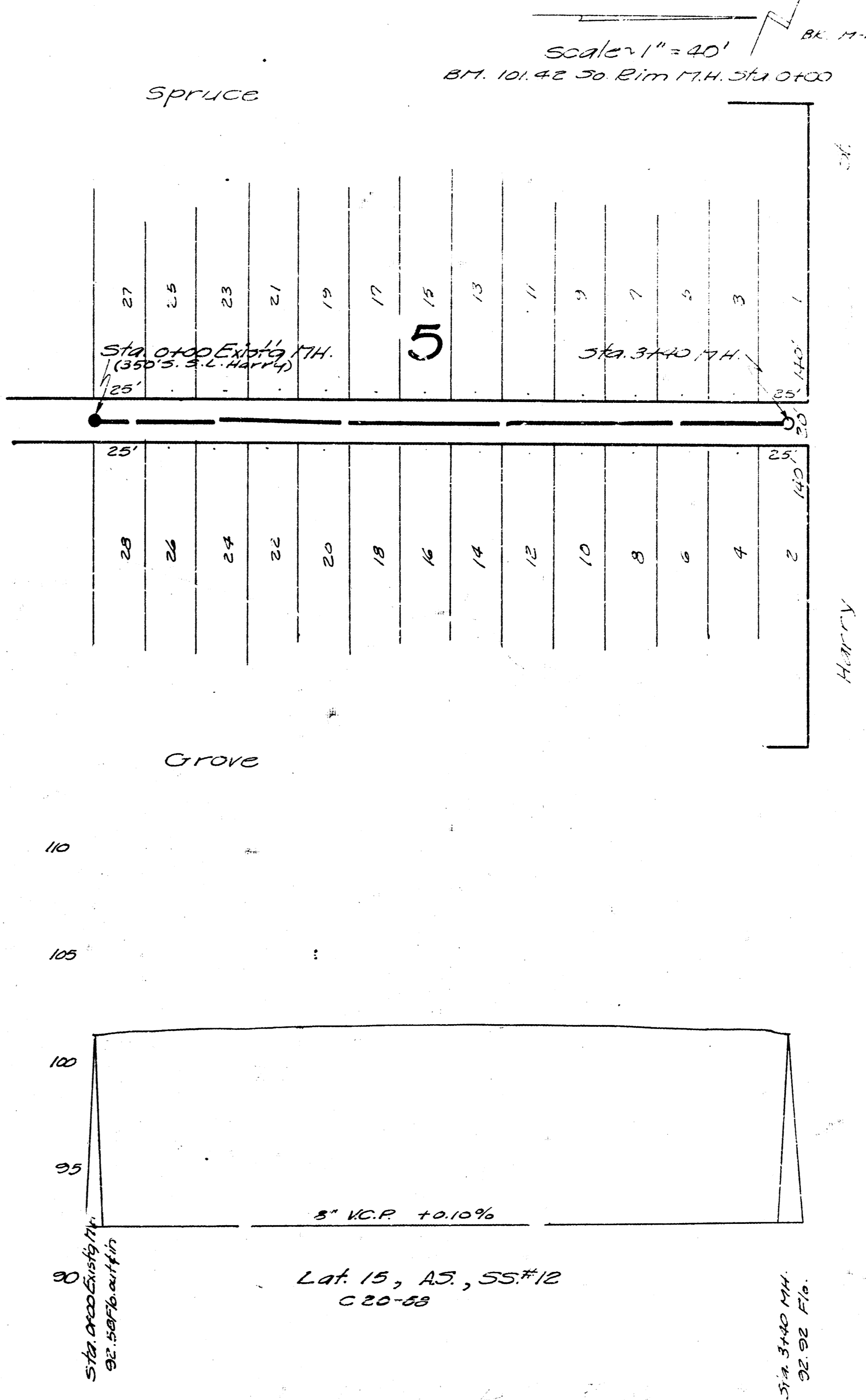
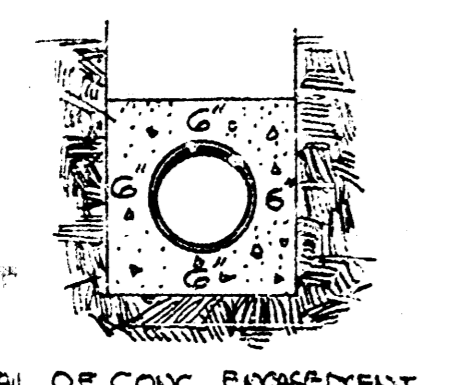


NOTE: ANY SINKER DITCH WITH LESS THAN 30" OF COVER IS TO BE CONCRETE EXPOSED.



LAT. D, DIST. 7, SS.#12  
 CITY OF WICHITA, KANSAS  
 ENGINEER'S DIVISION  
 L.K. WHITE ... CITY ENGINEER  
 DATE: 8-17-50 PROJ. NO. C20-56

