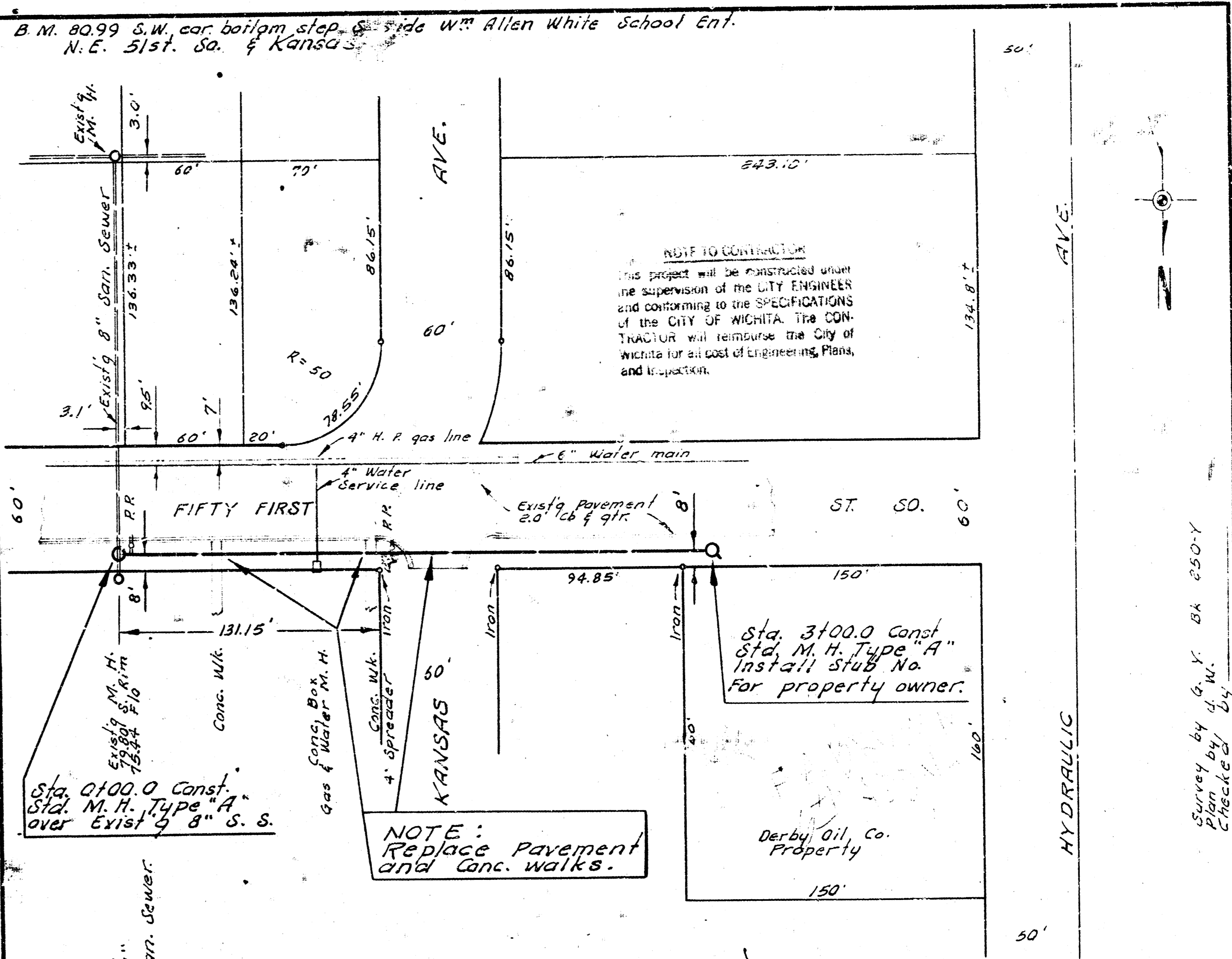


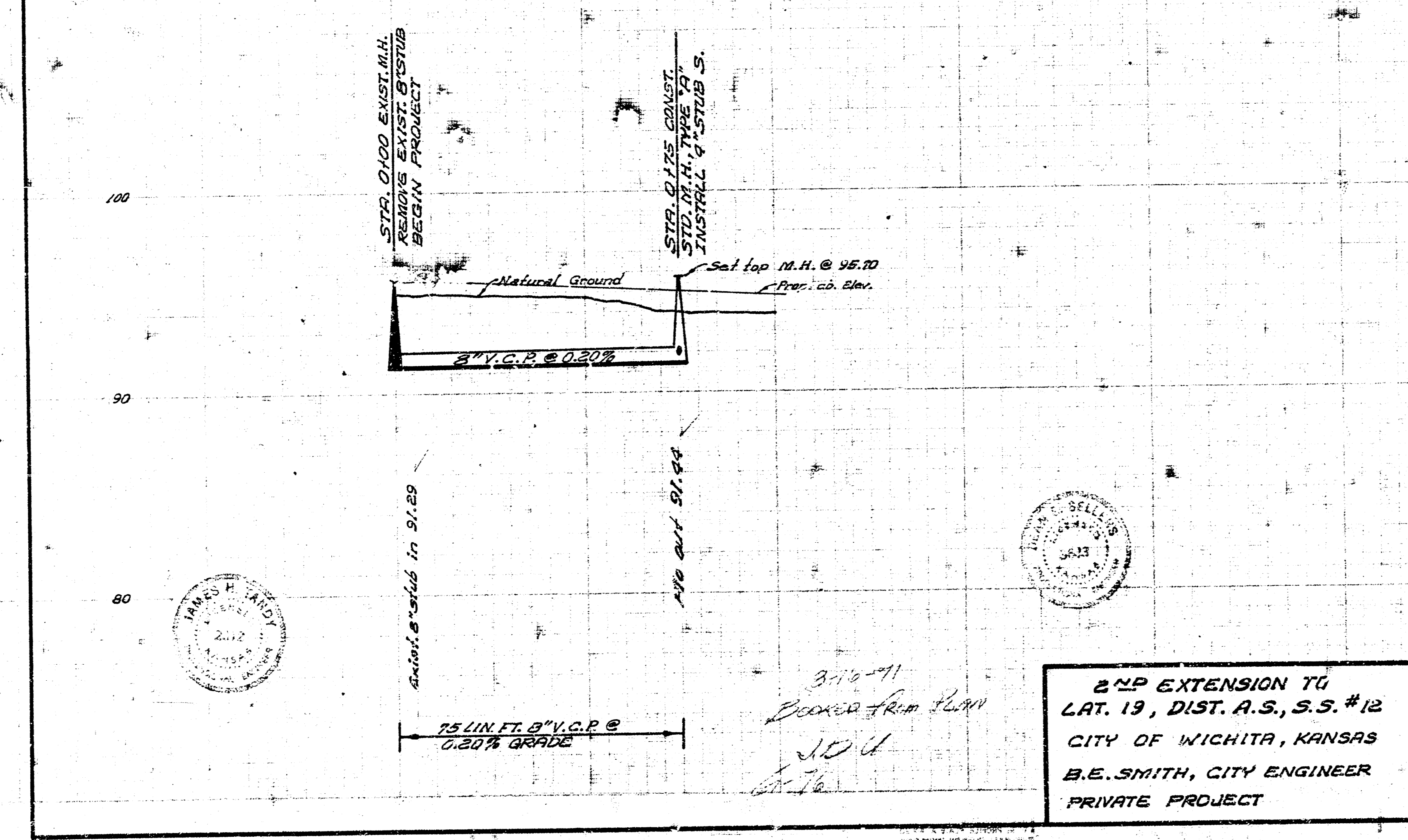
T.B.M. 95.60 Top S. cb. Poplar @ W. end exist. pavt. E.L. Wallace Addn.
 B.M. 95.70 W. Rim M.H. Sta. 0100

NOTE TO CONTRACTOR
 This project will be constructed under the supervision of the CITY ENGINEER and conforming to the SPECIFICATIONS of the CITY OF WICHITA. The CONTRACTOR will reimburse the City of Wichita for all cost of Engineering, Plans, and Inspection.

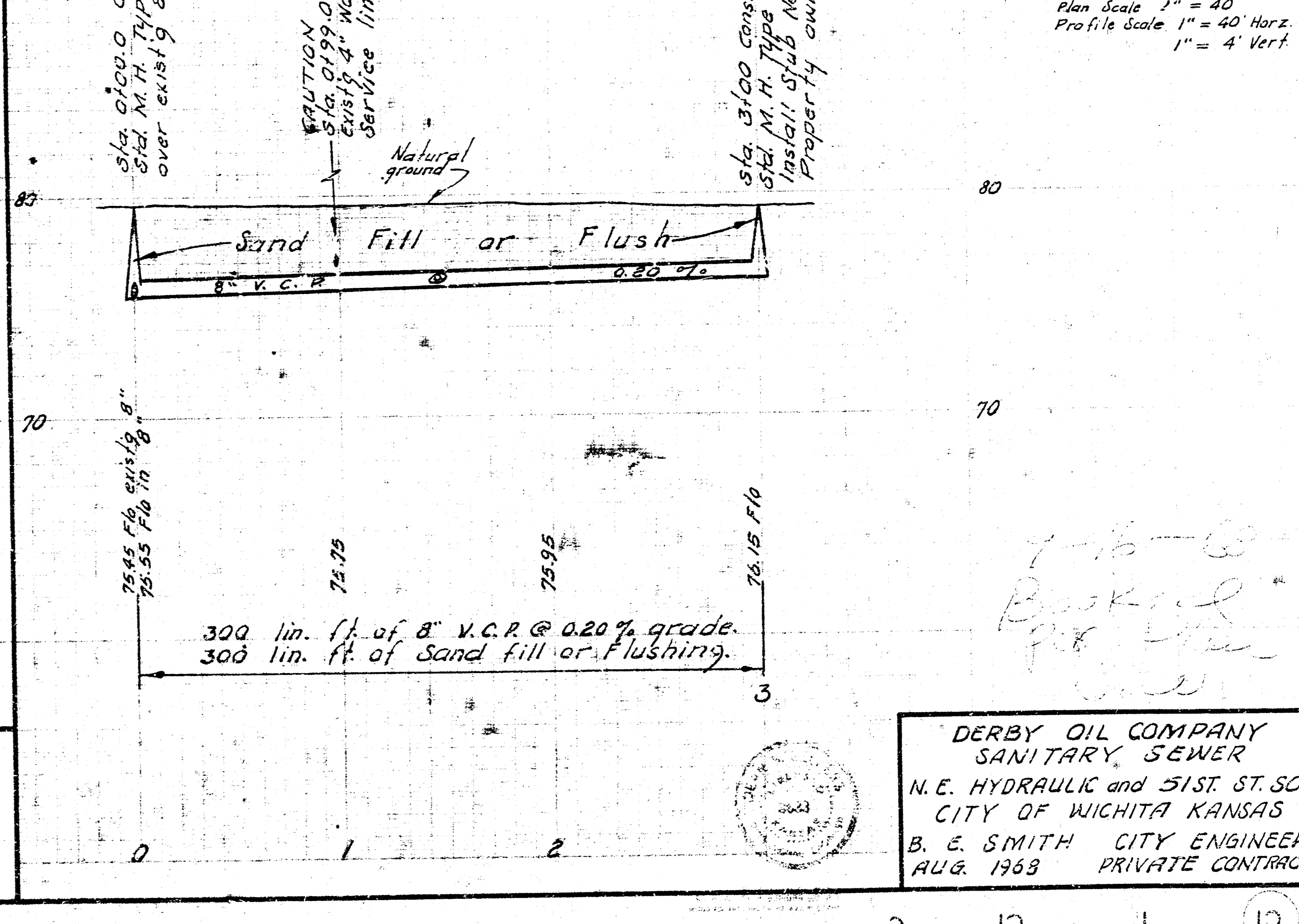
Plan Scale 1"=20'
 Profile Scale 1"=20' Horz.
 1"=4' Vert.



Plan Scale 1" = 40'
 Profile Scale 1" = 40' Horz.
 1" = 4' Vert.



2ND EXTENSION TO
 LAT. 19, DIST. A.S., S.S. #12
 CITY OF WICHITA, KANSAS
 B.E. SMITH, CITY ENGINEER
 PRIVATE PROJECT



DERBY OIL COMPANY
 SANITARY SEWER
 N.E. HYDRAULIC and 51ST. ST. SO.
 CITY OF WICHITA KANSAS
 B. E. SMITH CITY ENGINEER
 AUG. 1963 PRIVATE CONTRACT