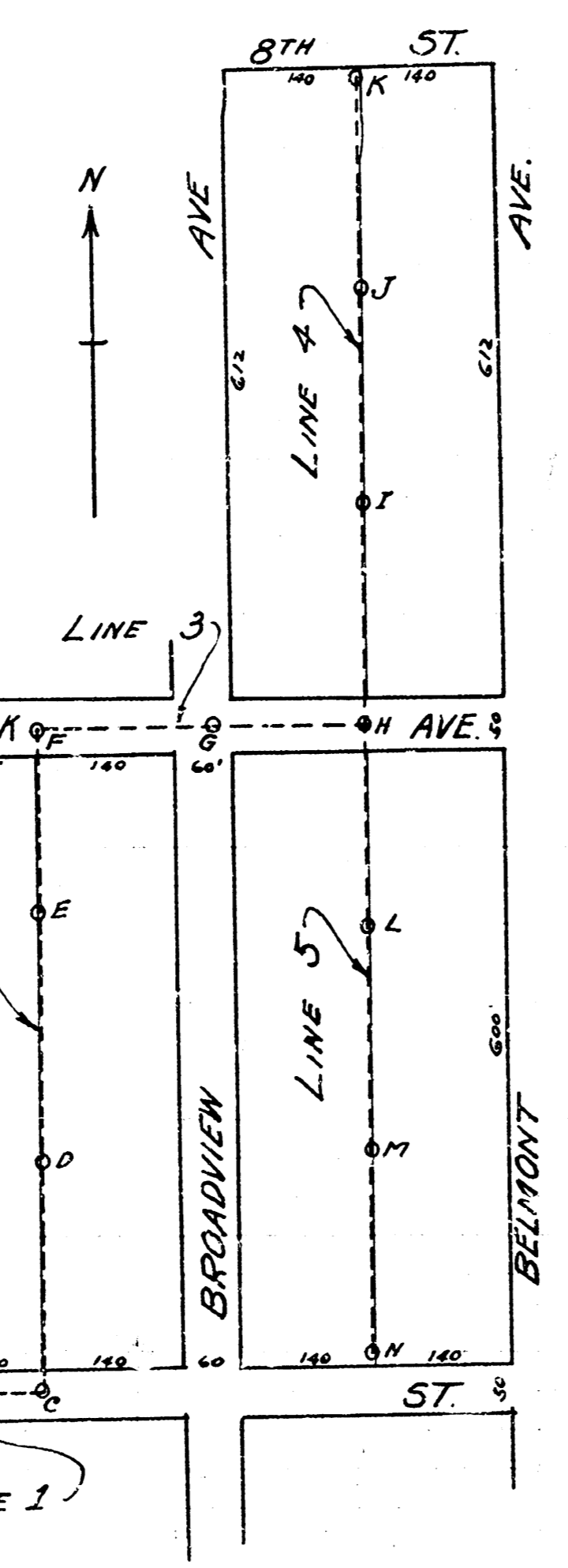


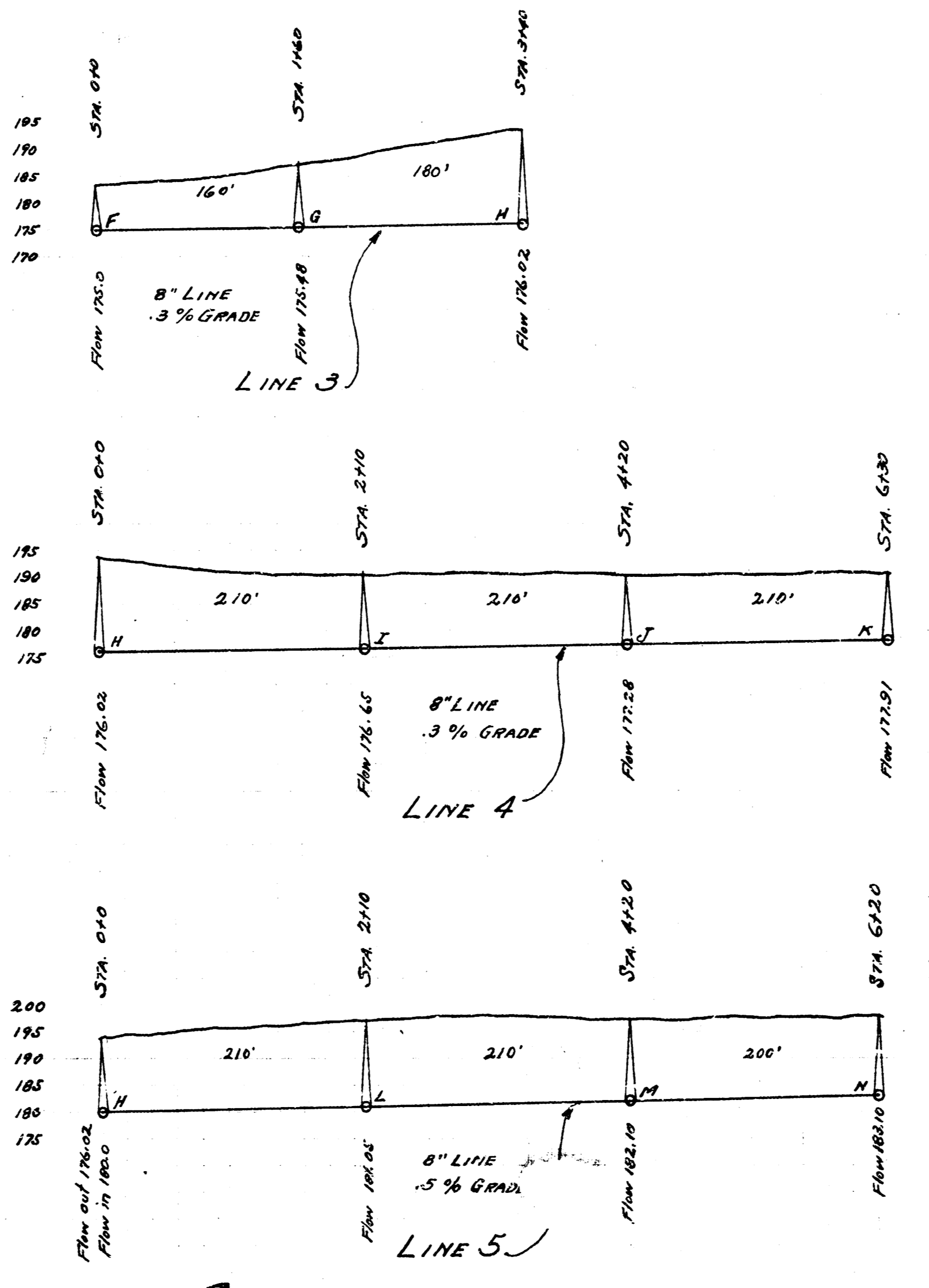
D.M. 108.39 L in Long. ft. of wall  
int. sq. North, NW Dodge  
and McCormick.

**LAT. F - S.S. No. 8.**

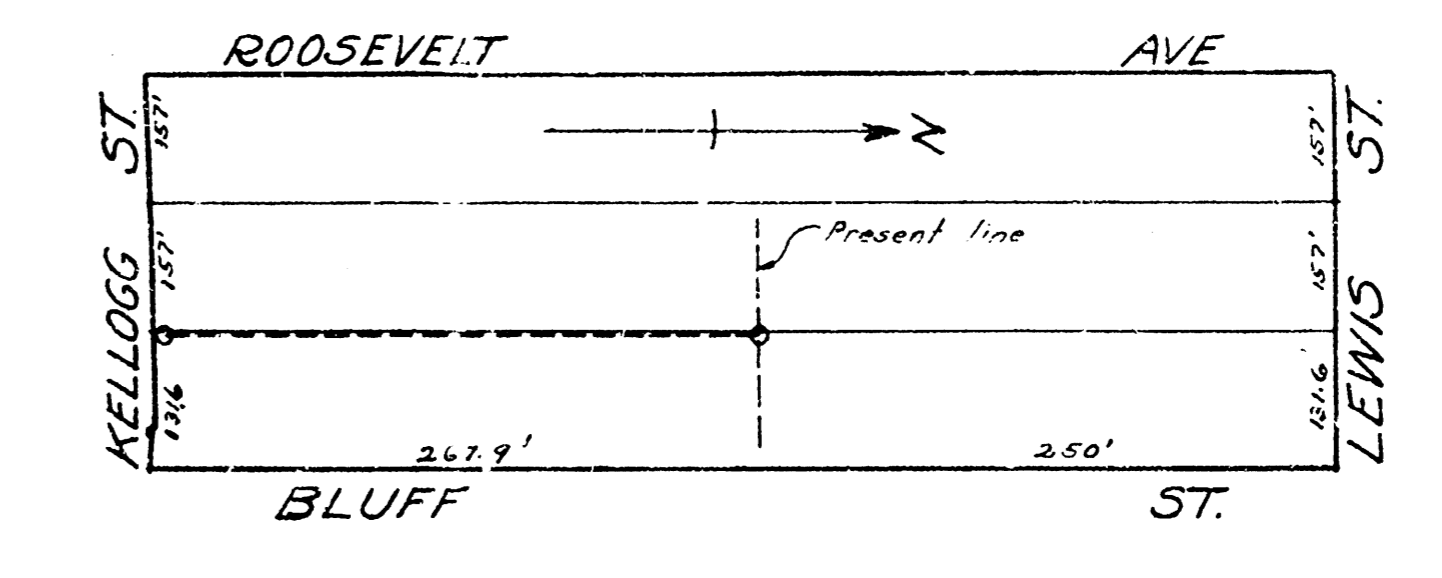
B.M. 176.52 X on end of curb of  
NS. of Curb on Bluff. (at curb)



**LINES 1 AND 2**  
**LAT. Y - DIST. D - S.S. No. 12**

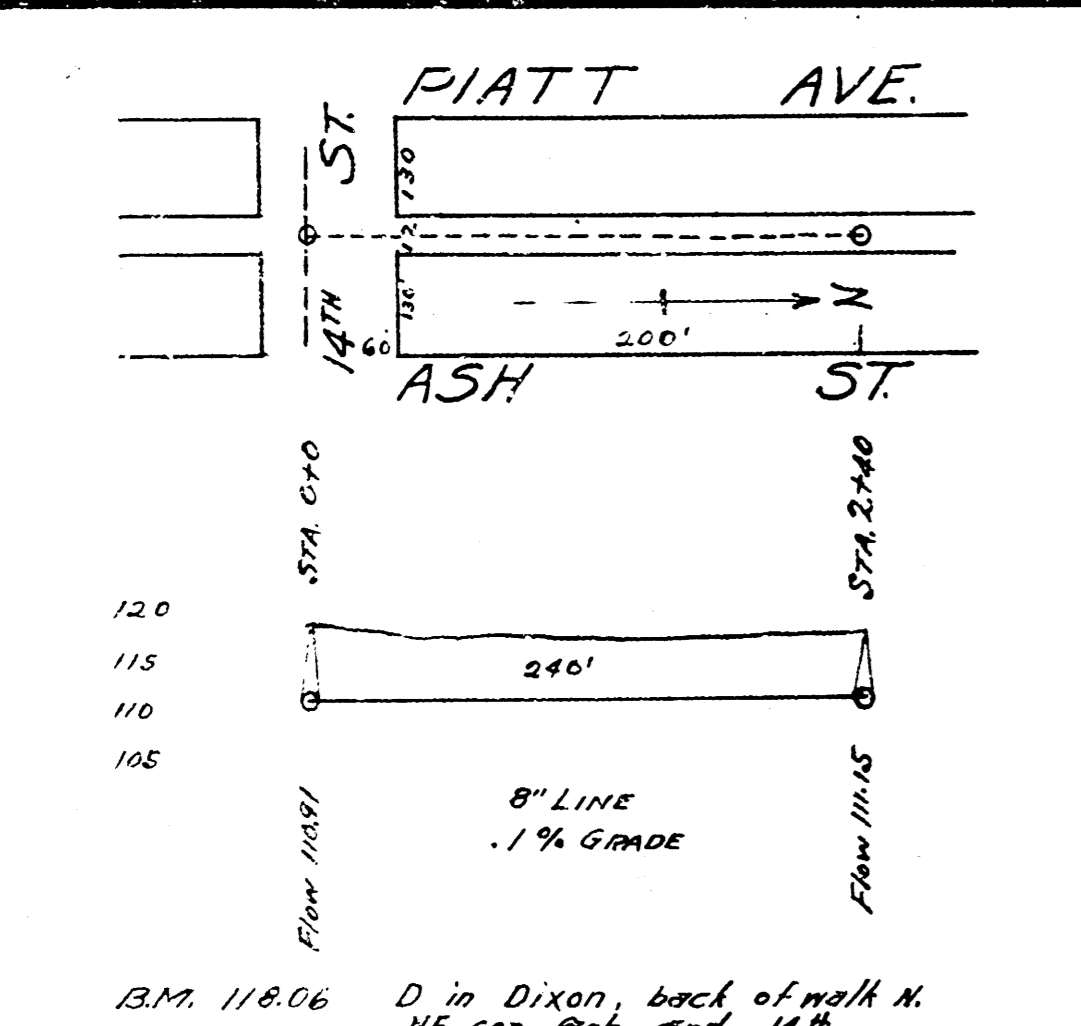


**LINES 3, 4 AND 5**  
**LAT. 2 - DIST. D - S.S. No. 12**



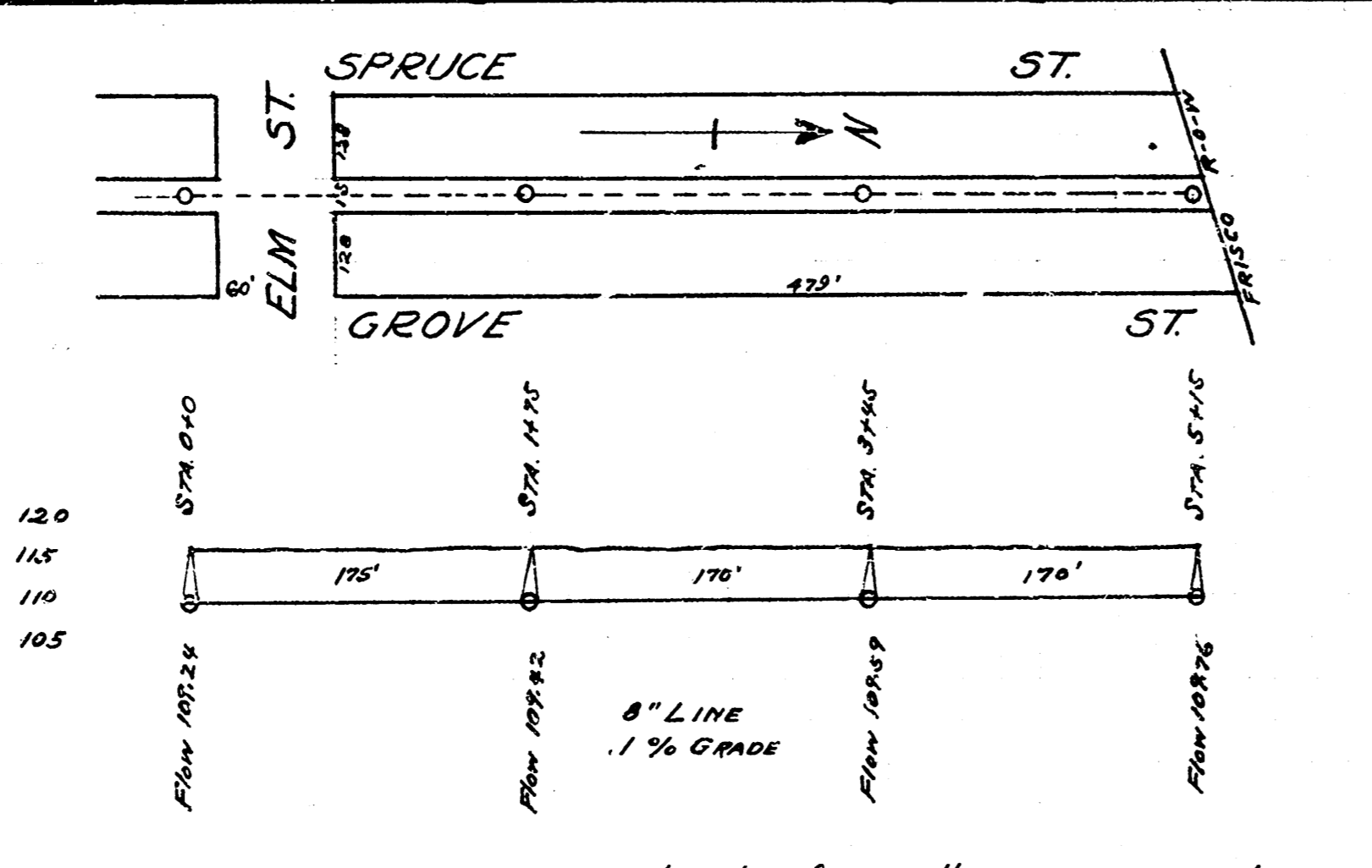
B.M. 171.74 Iron in thimble  
NE. cor. Roosevelt & Lewis

**LAT. 27 - DIST. A - S.S. No. 12**



B.M. 118.66 D in Dixon, back of north N.  
NE. cor. Ash and Piatt

**LAT. K - DIST. O - S.S. No. 12.**



B.M. 116.20 H in Hurst, ctr. of N. South - SW. cor. Grove and Elm

**LAT. Z - DIST. D - S.S. No. 12**