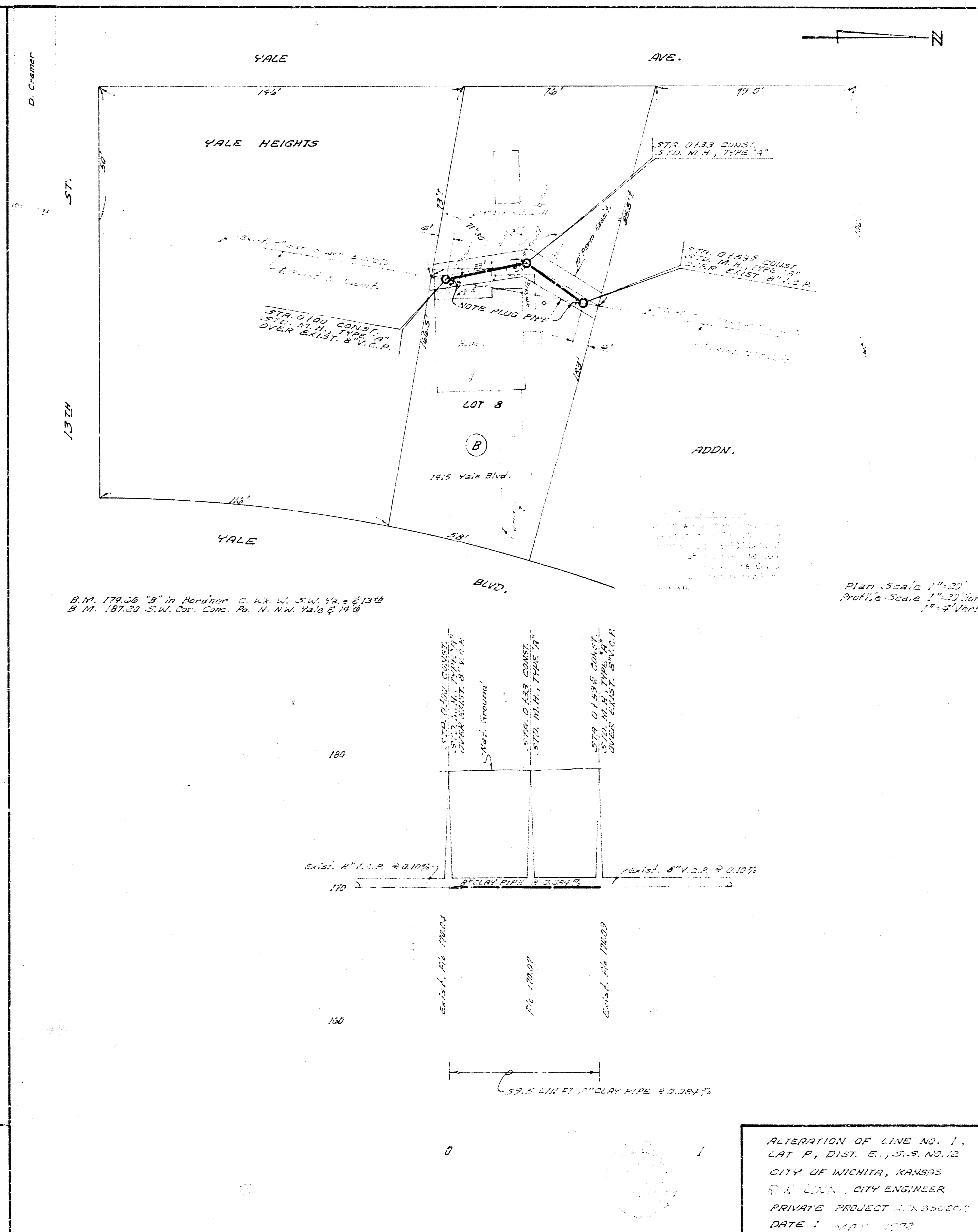


LAT. 15, SUB 9, W.T.S.
CITY OF WICHITA, KANSAS
B. E. SMITH, CITY ENGINEER
PRIVATE PROJECT
DATE:



ALTERATION OF LINE NO. 1.
LAT 15, DIST. E., S.S. NO. 12
CITY OF WICHITA, KANSAS
E. H. LANN, CITY ENGINEER
PRIVATE PROJECT #183500
DATE: MAY 1972