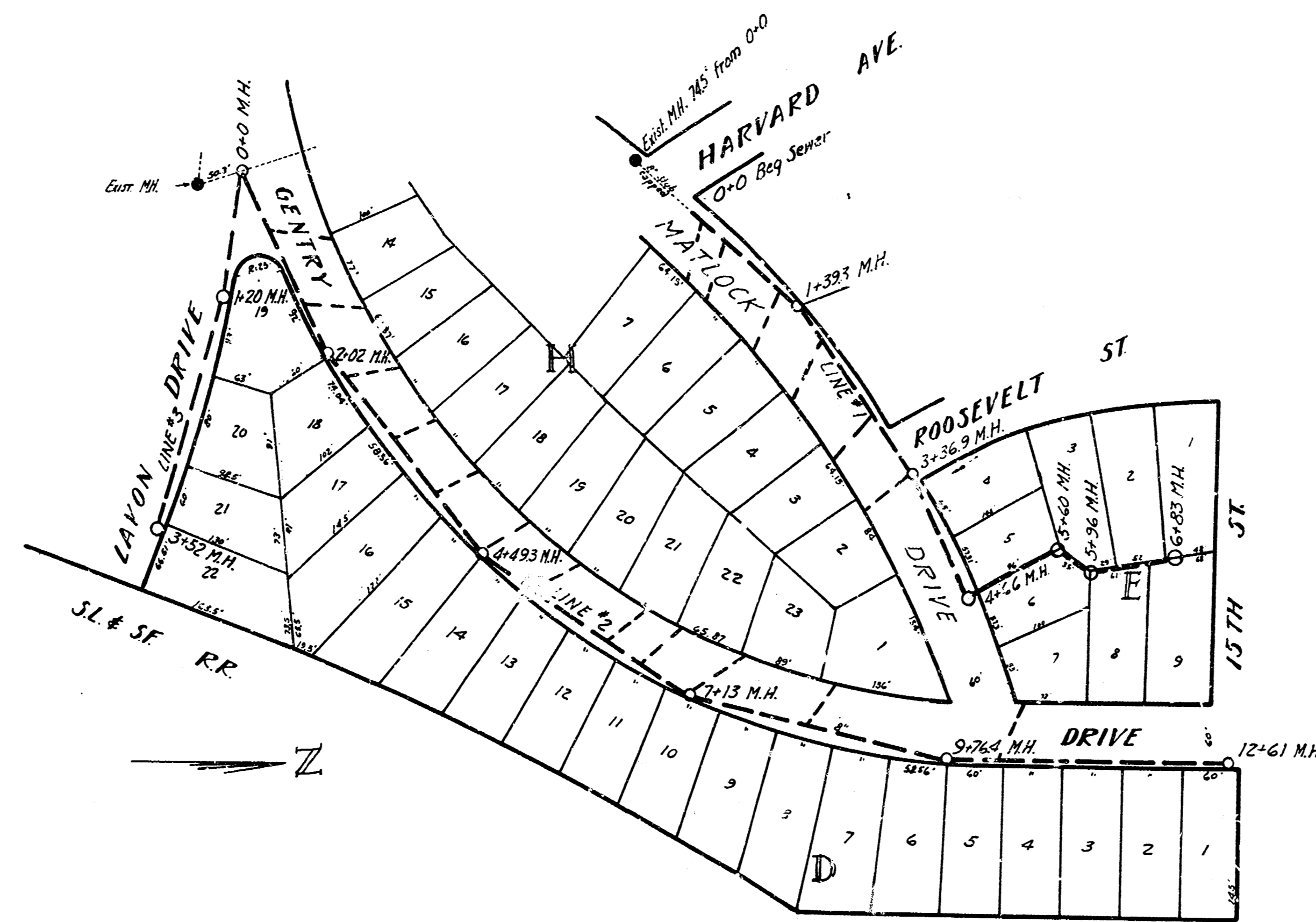
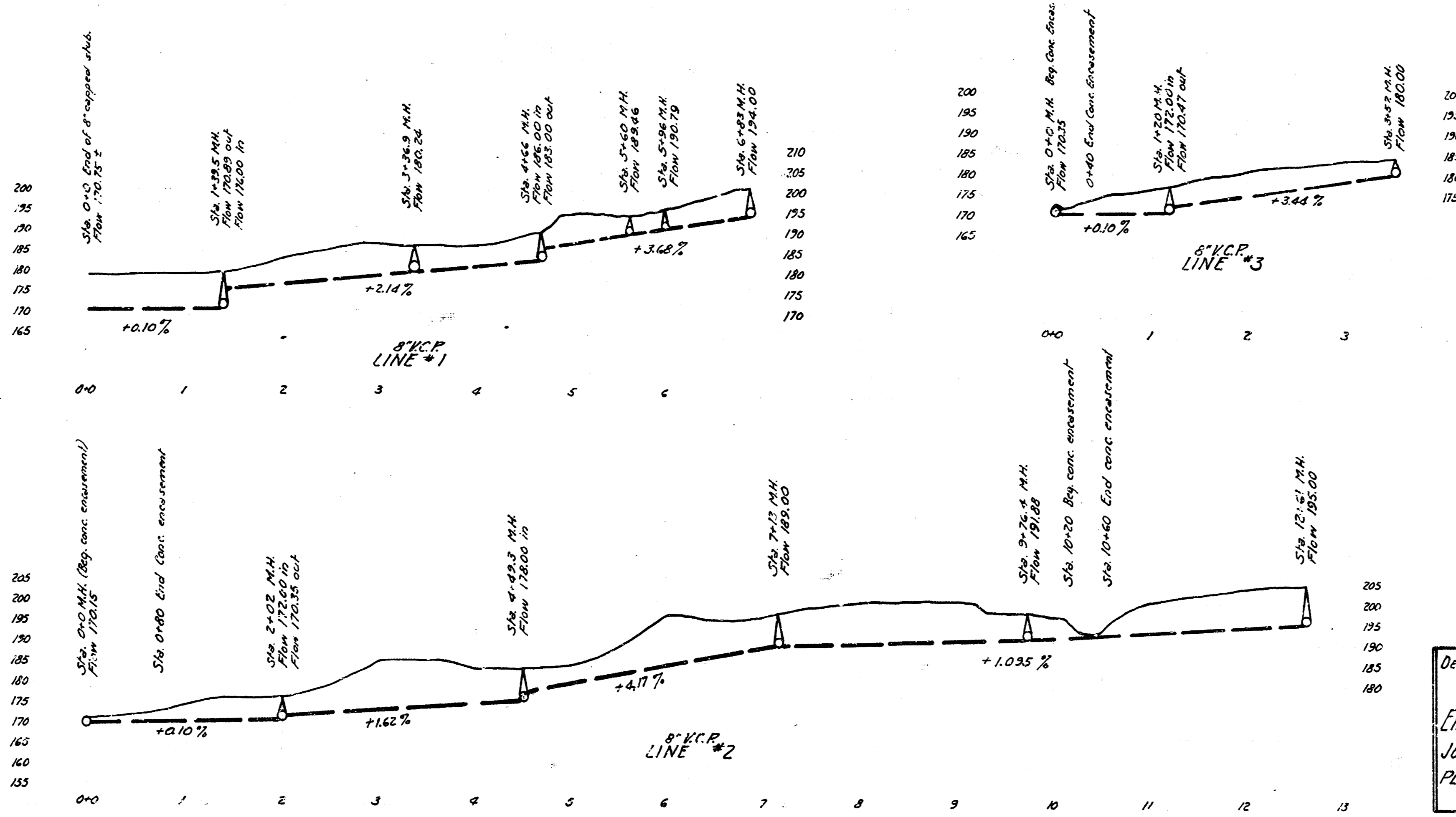


SANITARY SEWER PLAN
 LAT. V, DIST. E, S.S. #12
 PROJECT C26-20



NOTE: 6" leads are to be constructed across the street area before pavement construction. There shall be one lead per building site as located on the layout.

R.M. Elev 172.14 "K" in R/Riche in curb #3, Matlock Dr at St. Harvard Ave.
 172.53 South Radius from 165.00 on Curved Dr. Kennedy Dr.



DEPARTMENT OF SERVICE City of WICHITA, KANSAS
 LAT. V, DIST. E, S.S. #12
 ENGINEERING DEPT. - L.K. WHITE ENGINEER
 JULY 1946 PROJECT C26-20
 PLAN SCALE 1"=100' PROFILE HORIZ. SCALE 1"=80'