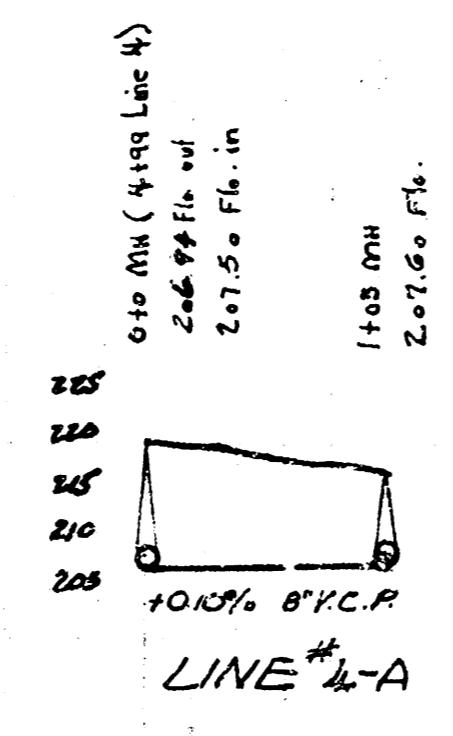
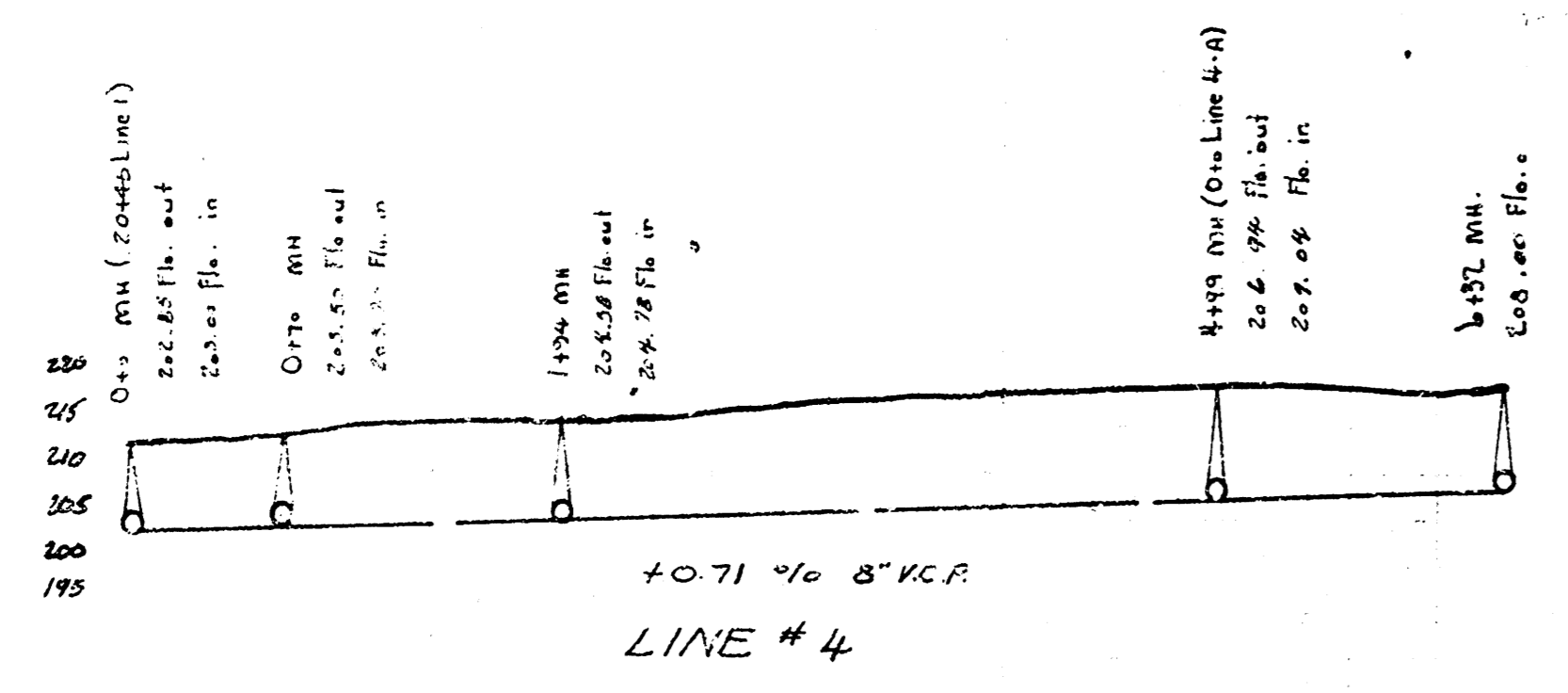
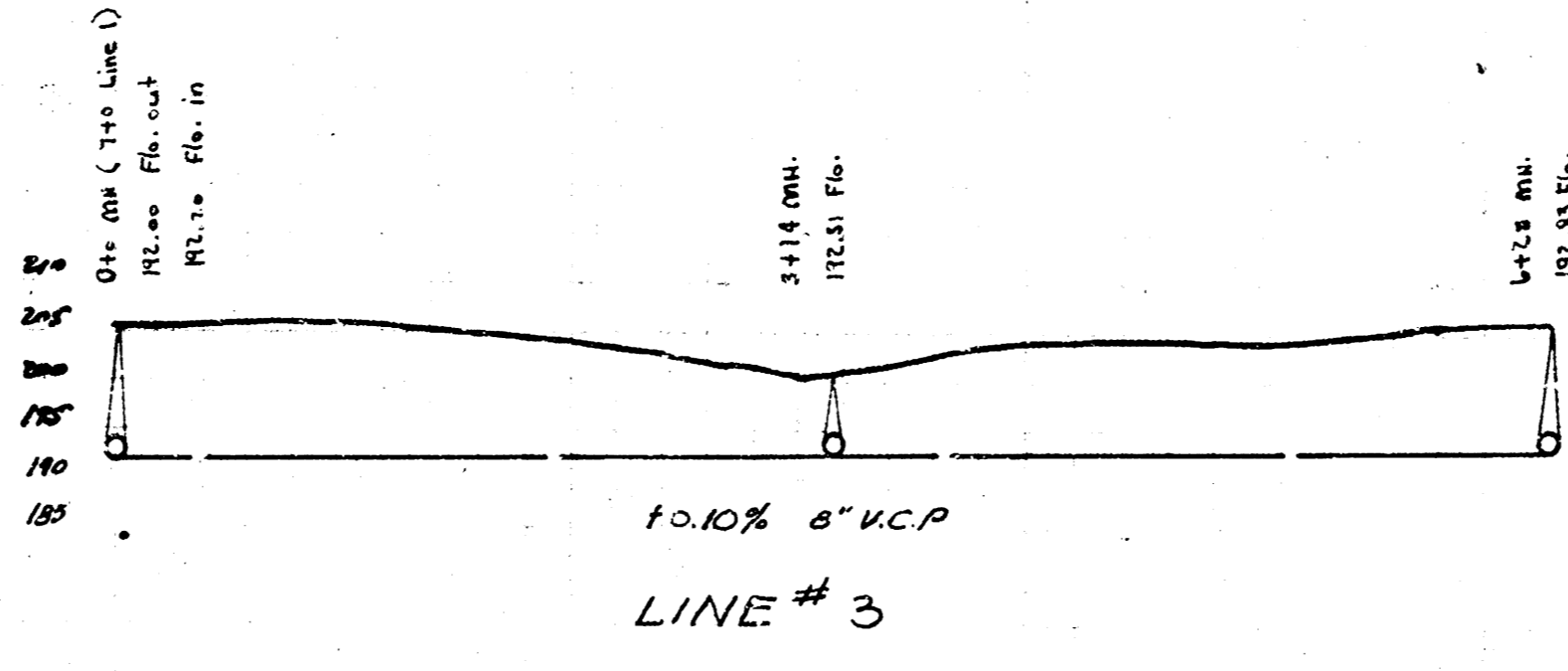
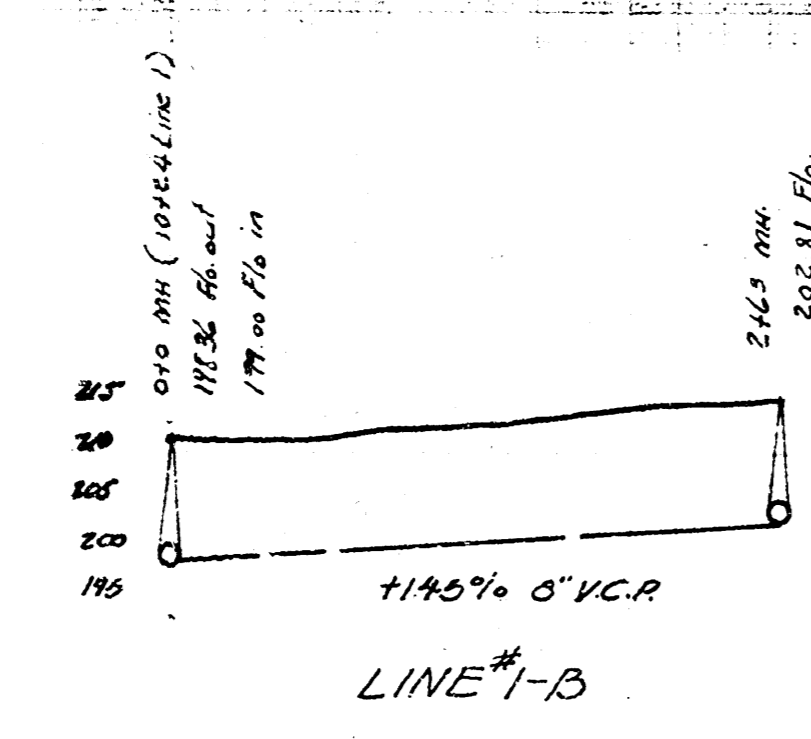
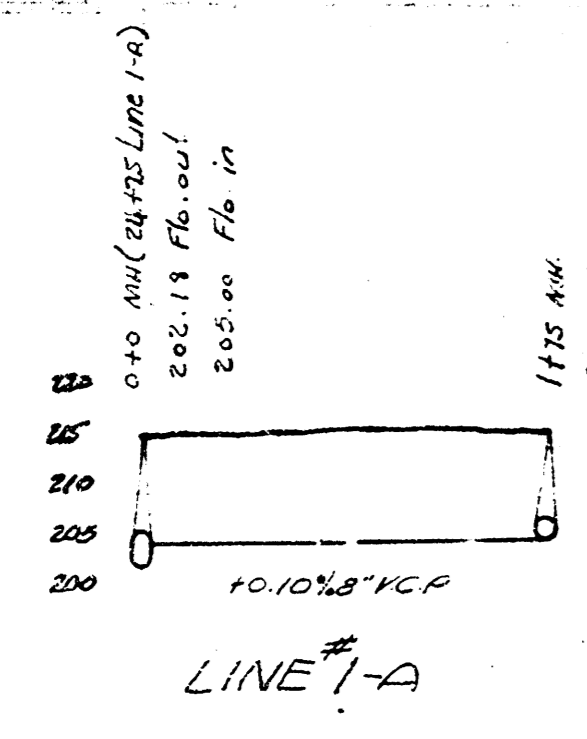
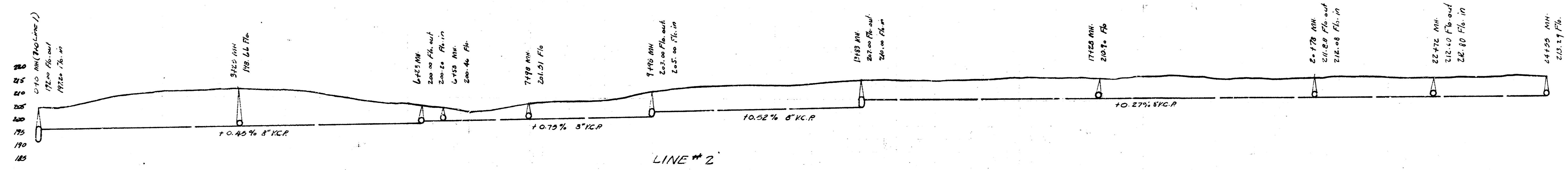
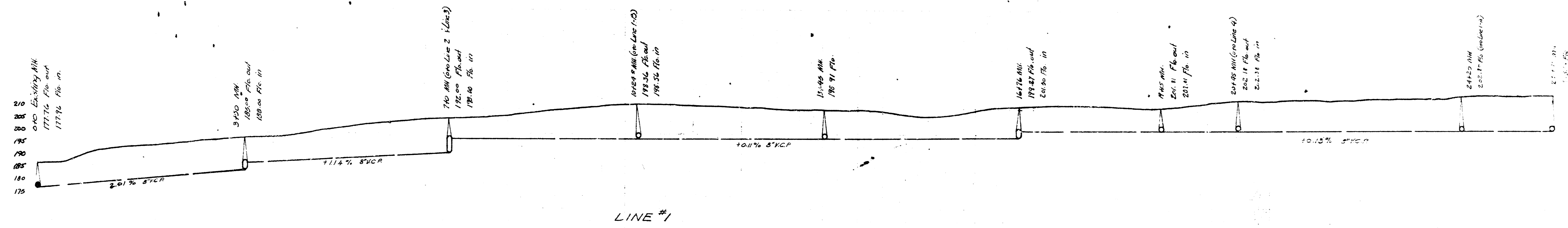


UNIVERSITY PARK 2ND ADDN.  
 LAT. 8, DIST. E, MAIN 12  
 CITY OF WICHITA, KANSAS  
 L.K. WHITE City Engineer  
 DATE: JANUARY 1949 PROJ. NO. C28-42



B.M. 210.55 R.R. Spike in High Line Pole SL 718 - ML 0144 (M.E. Part - 1 Addition)  
 B.M. 202.55 L<sup>o</sup> Spike in S.S. Tel. Pole No. West of W.N. Car Bluff 1044.

100% S.V.C.P.