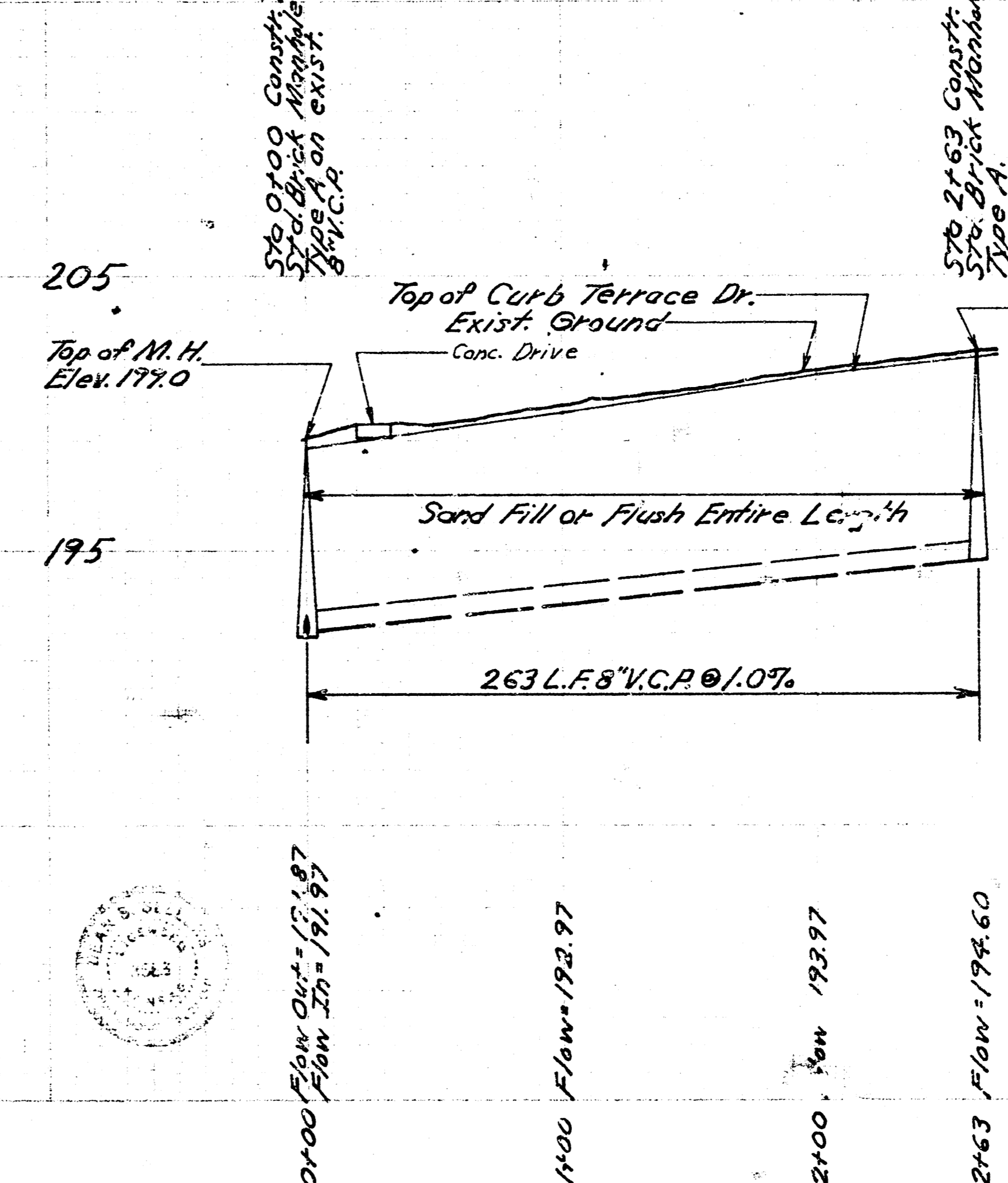
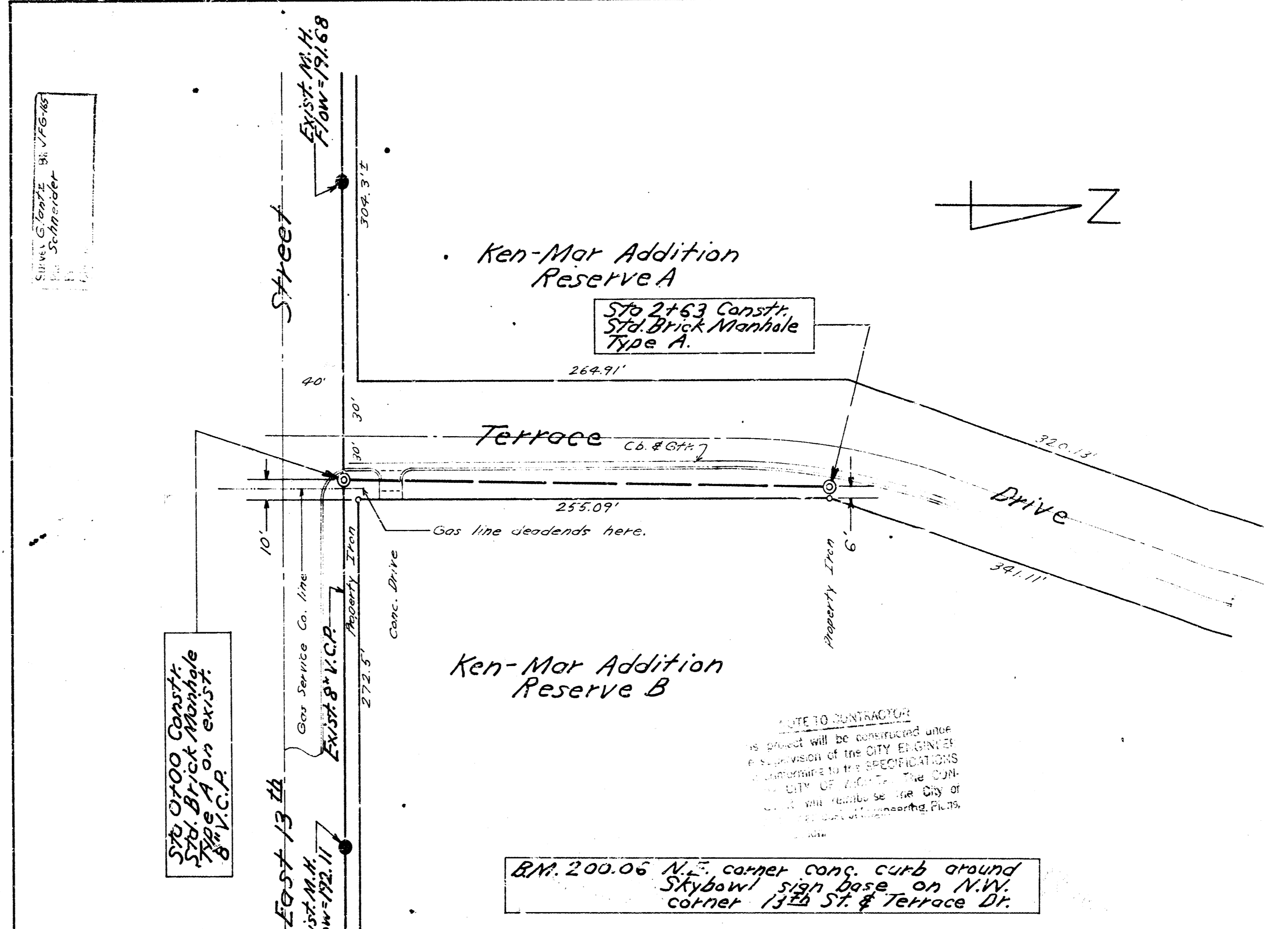


LAT. 7, GLENVILLE SEWER
 CITY OF WICHITA, KANSAS
 B. E. SMITH, CITY ENGINEER
 PROJ. NO. C 28-45
 DATE: OCT 1968



EXT. OF LAT. 18,
 DIST. E, S.S. NO. 12
 CITY OF WICHITA, KANSAS
 B. E. SMITH, CITY ENGINEER
 PRIVATE CONTRACT
 DATE: