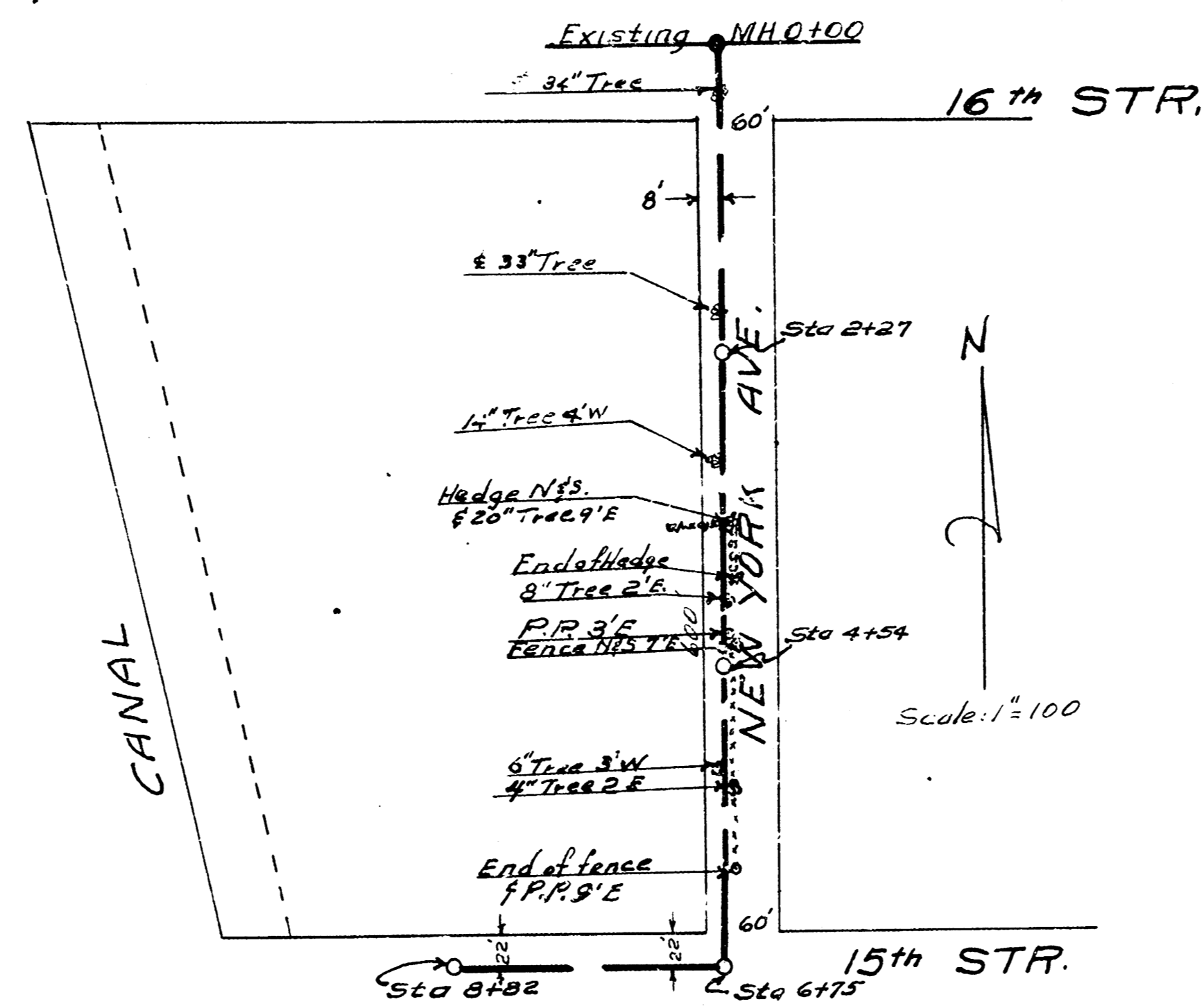


Scale: 1" = 50'



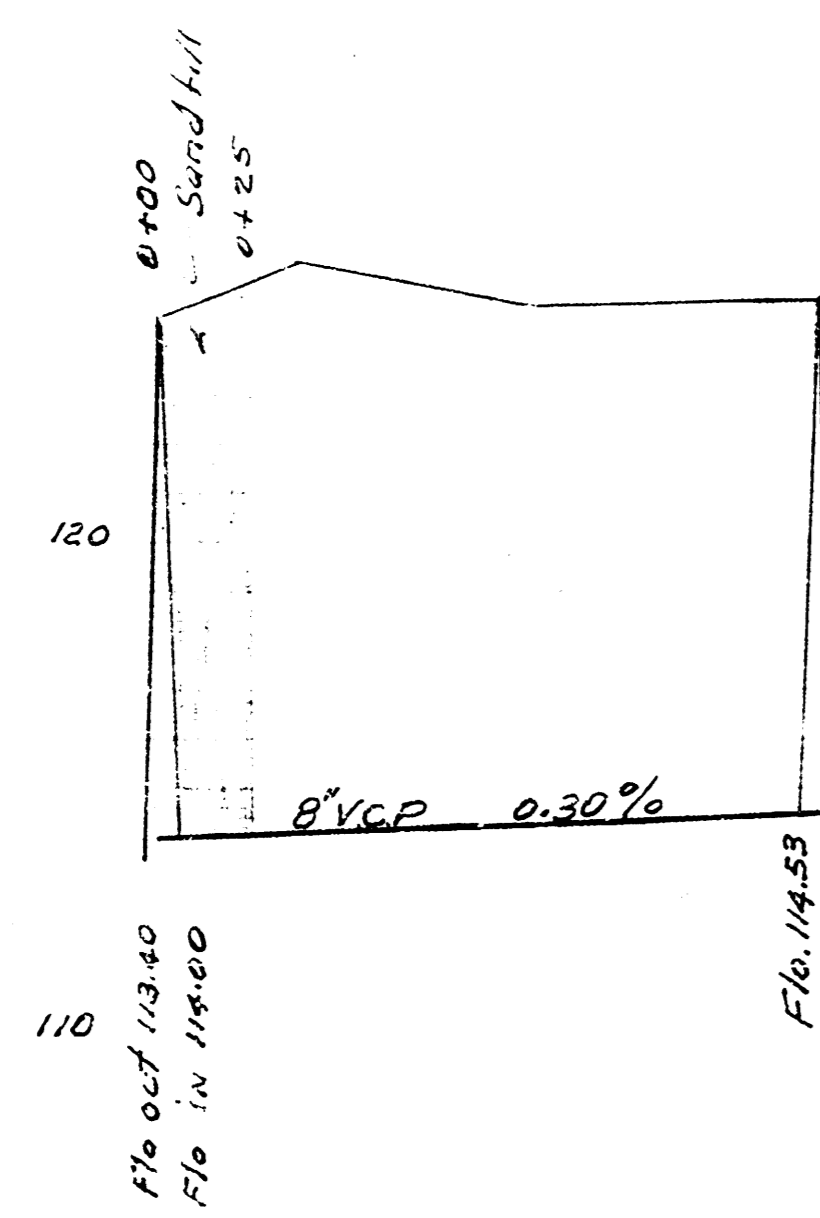
Scale: 1" = 100'

NOTE: Sand fill from Sta 0+00 to Sta 0+25

BM 123.48 NE Cor. Conc wh. @ NE Cor. Ho SW. 8th & Grove.

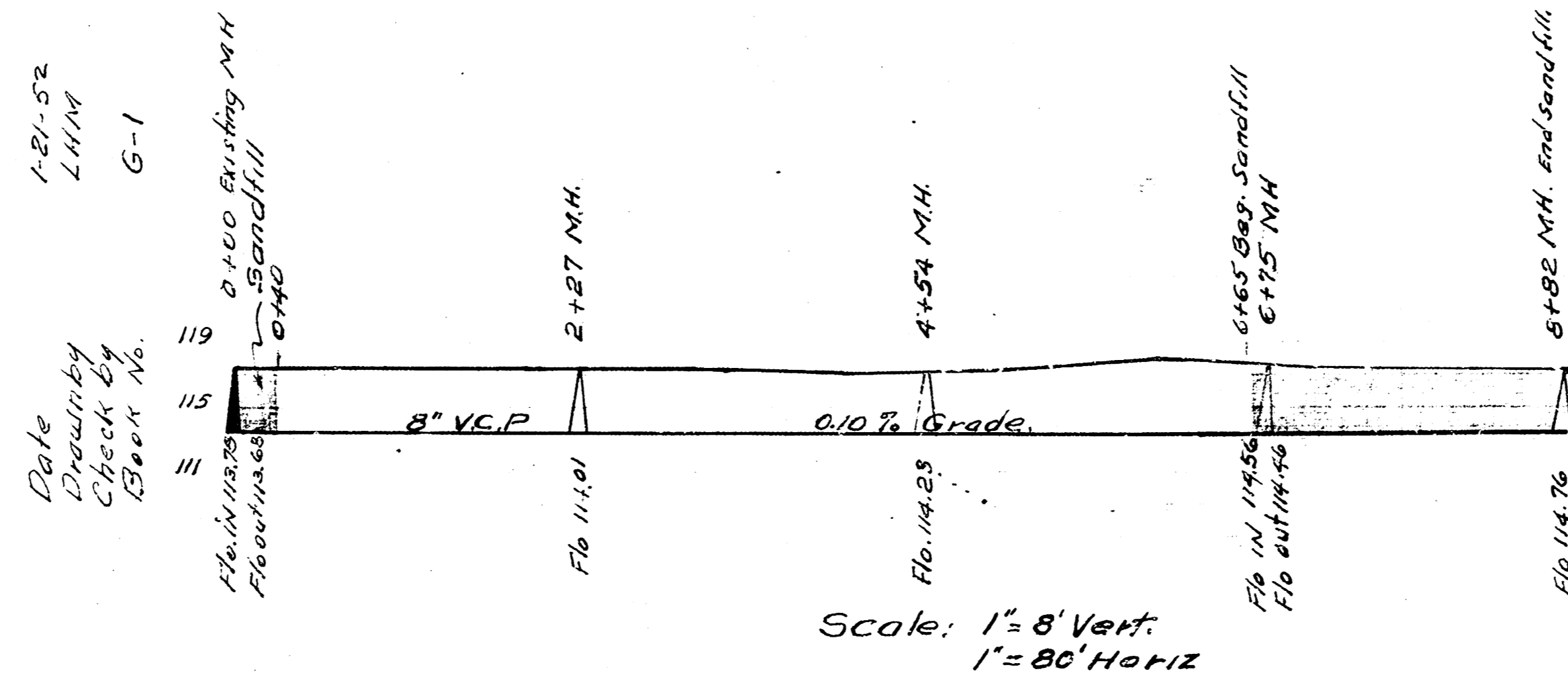
BM 116.41 No Rim of thimble 16th & Hydraulic

Date 1-8-52
 Drawn by LHM
 Checked by C.M.T.
 Book No



Scale: 1" = 50' Horiz.
 1" = 4' Vert.

LAT. 22 DIST. E. MAIN 12
 CITY OF WICHITA KANSAS
 L.K. WHITE CITY ENGINEER
 Proj. No. C-21-51
 REVISED 1-25-52



Scale: 1" = 8' Vert.
 1" = 80' Horiz

LAT. 1 DIST. Y 55#12
 CITY OF WICHITA KANSAS
 L.K. WHITE CITY ENGINEER
 Proj. No. C-20-22

