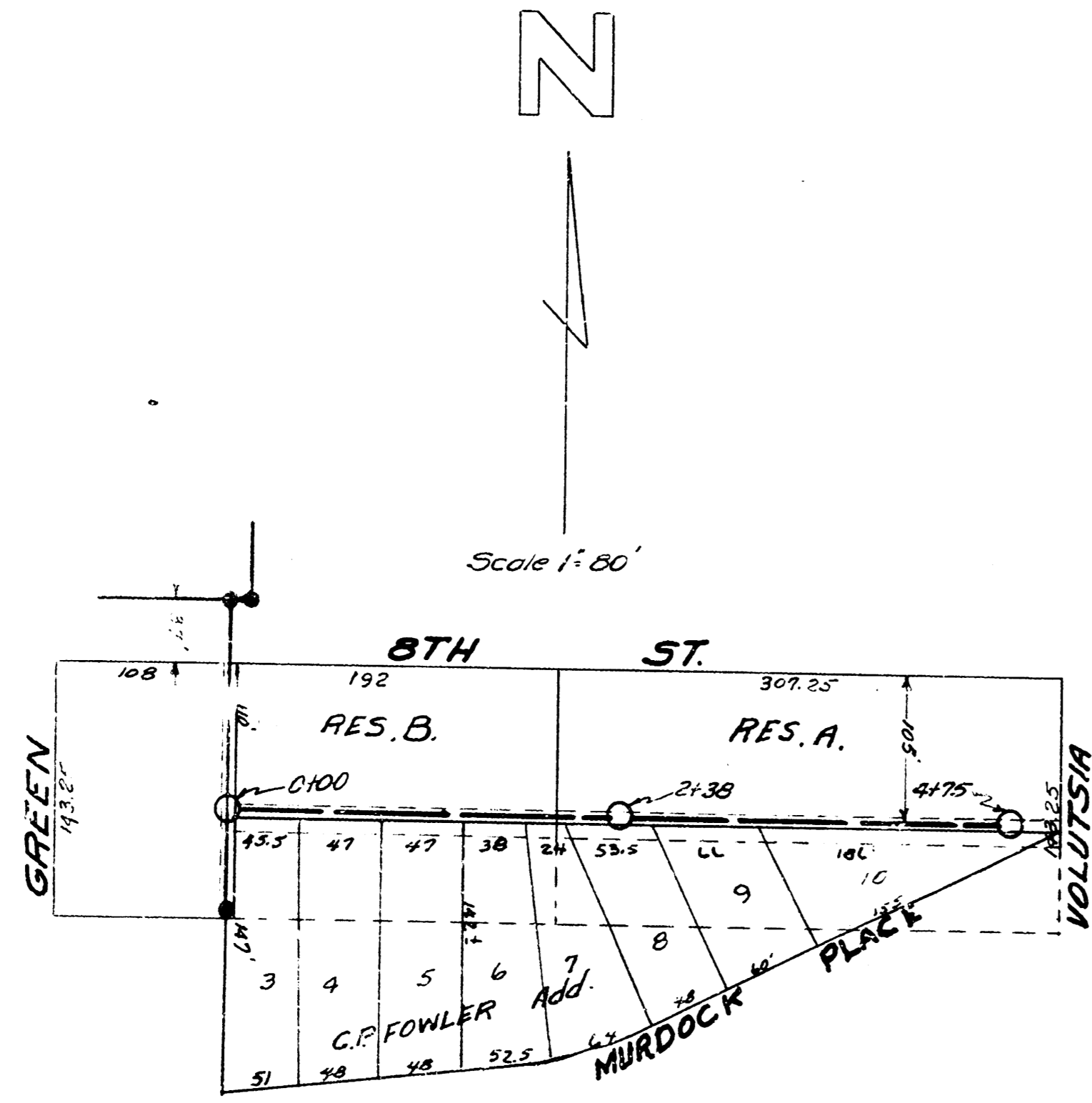
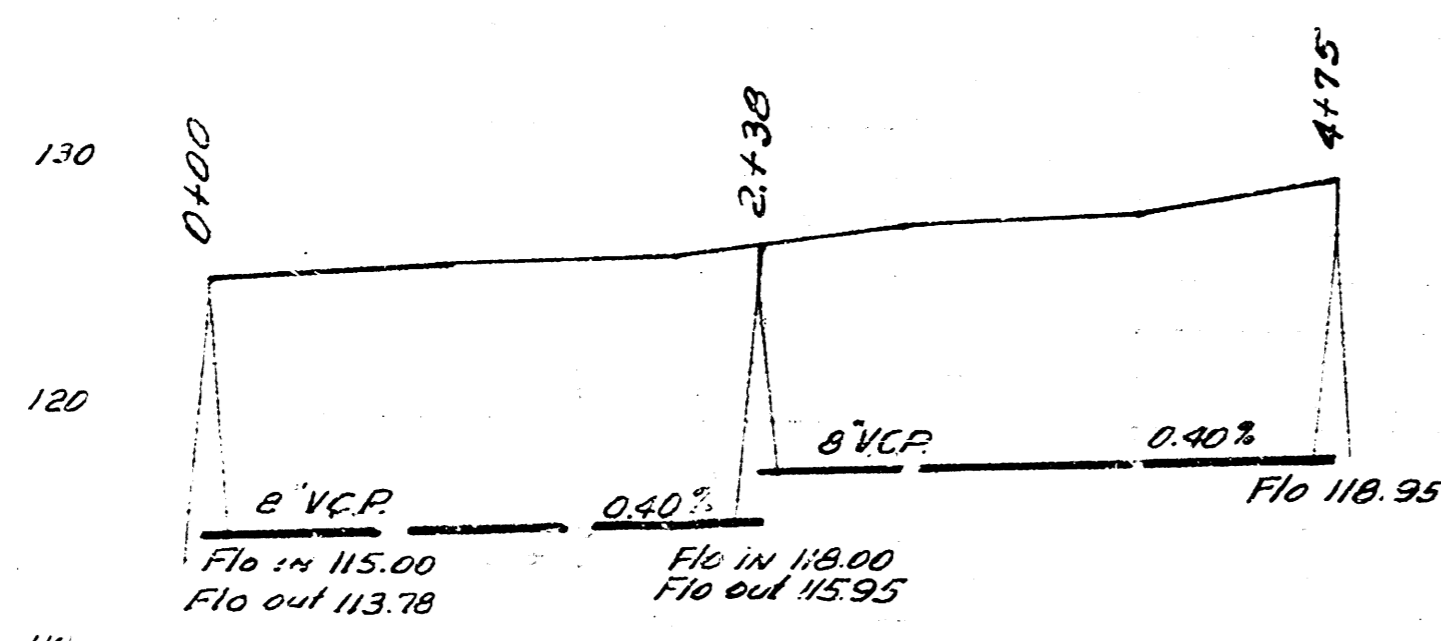


RESERVE A & B MOSSMAN ADDITION  
Except west 100'



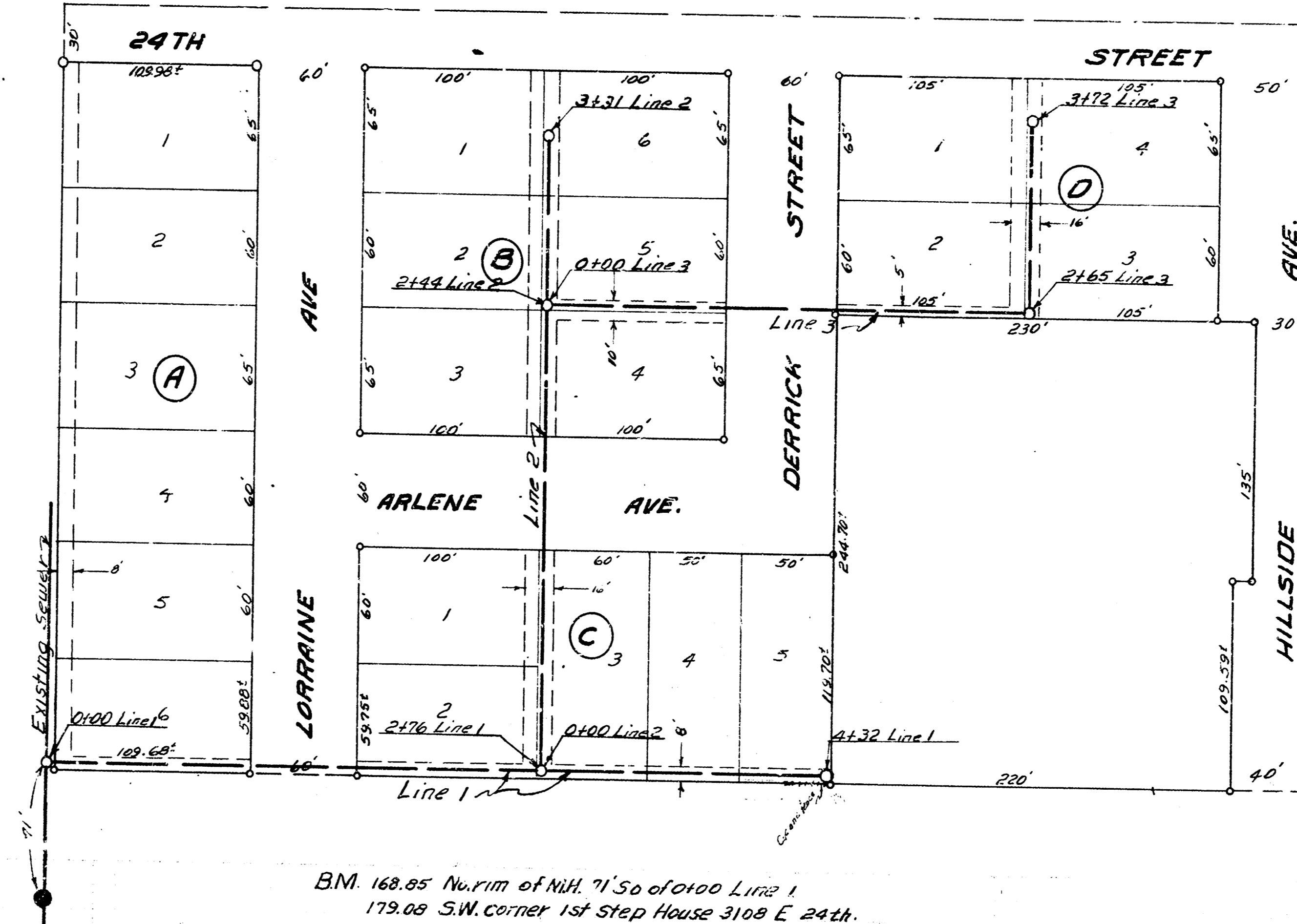
B.M. 124.17 So. Rim of M.H. 130' No. of 0100



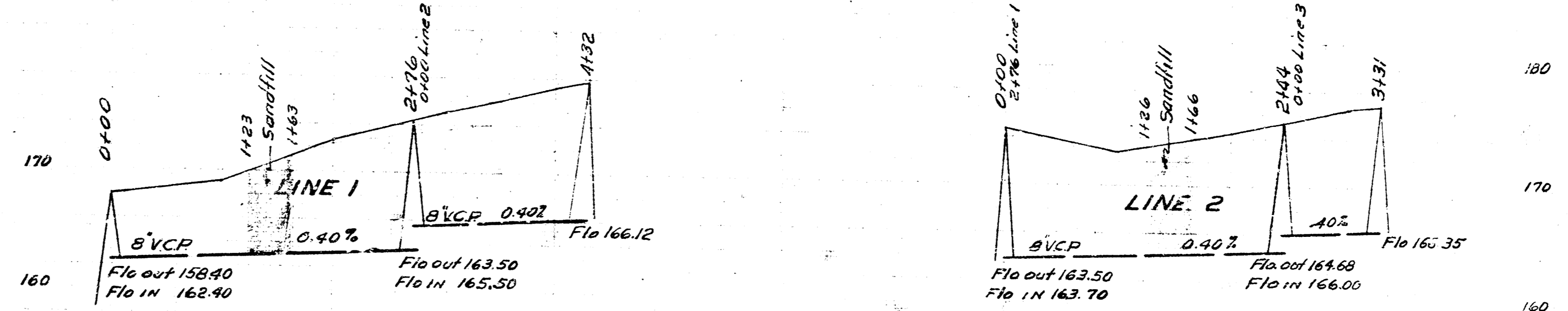
Date 11-26-52  
Drawn by McElroy  
Checked by Black  
Book No. M-30

LAT. 23 DIST. E. SS. 12  
CITY OF WICHITA KANSAS  
L. K. WHITE CITY ENGINEER  
Proj No. C-22-90

JANICE MATLOCK ADDITION



B.M. 168.85 No. rim of M.H. 71' So of 0100 Line 1  
179.08 S.W. corner 1st Step House 3108 E 24th.



Date 11-8-52  
Drawn by L. McClain  
Checked by Book No. M-16

LAT. 5 DIST. 13 SS. 12  
CITY OF WICHITA KANSAS  
L. K. WHITE CITY ENGINEER  
Proj No. C-22-88